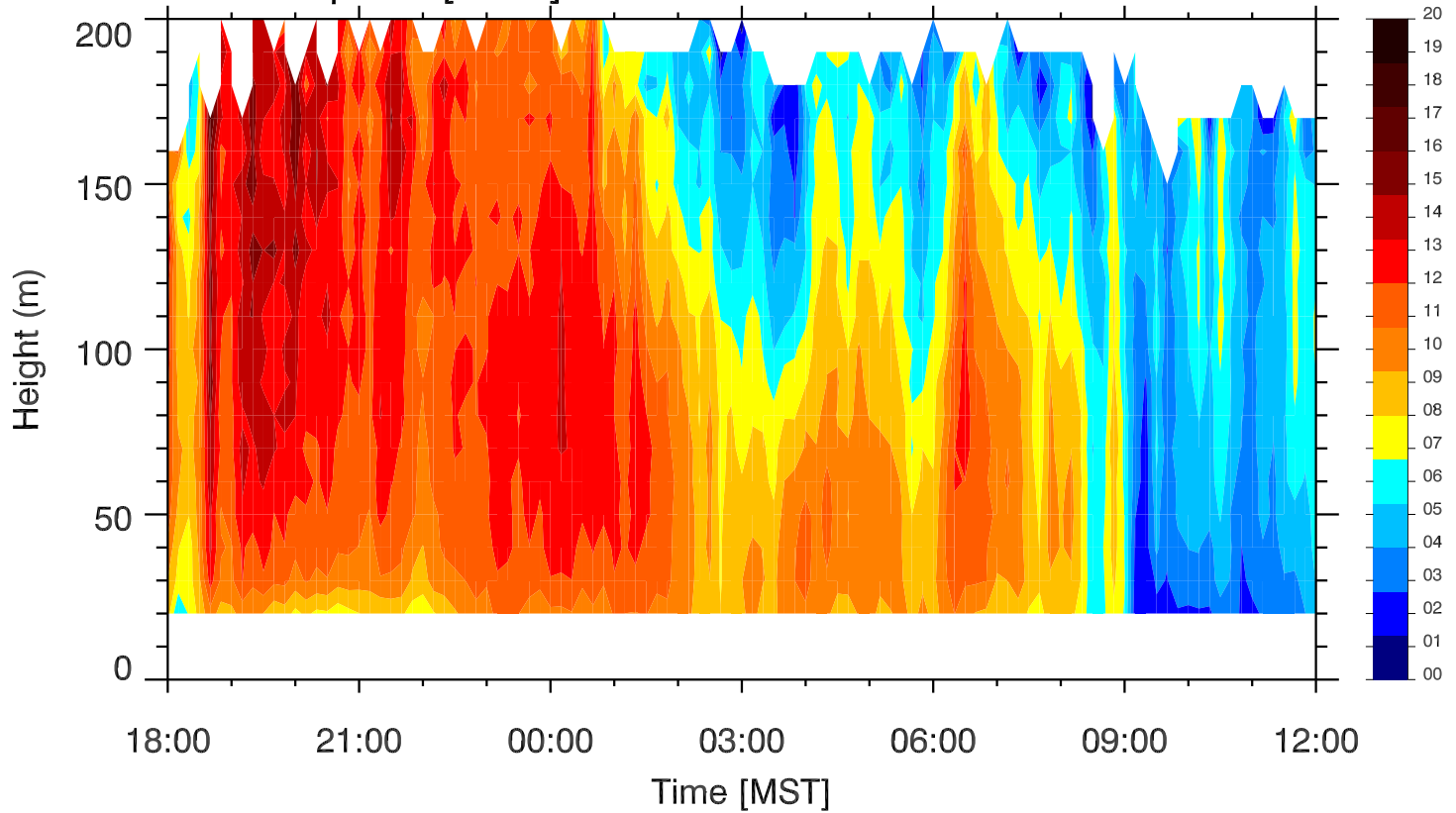
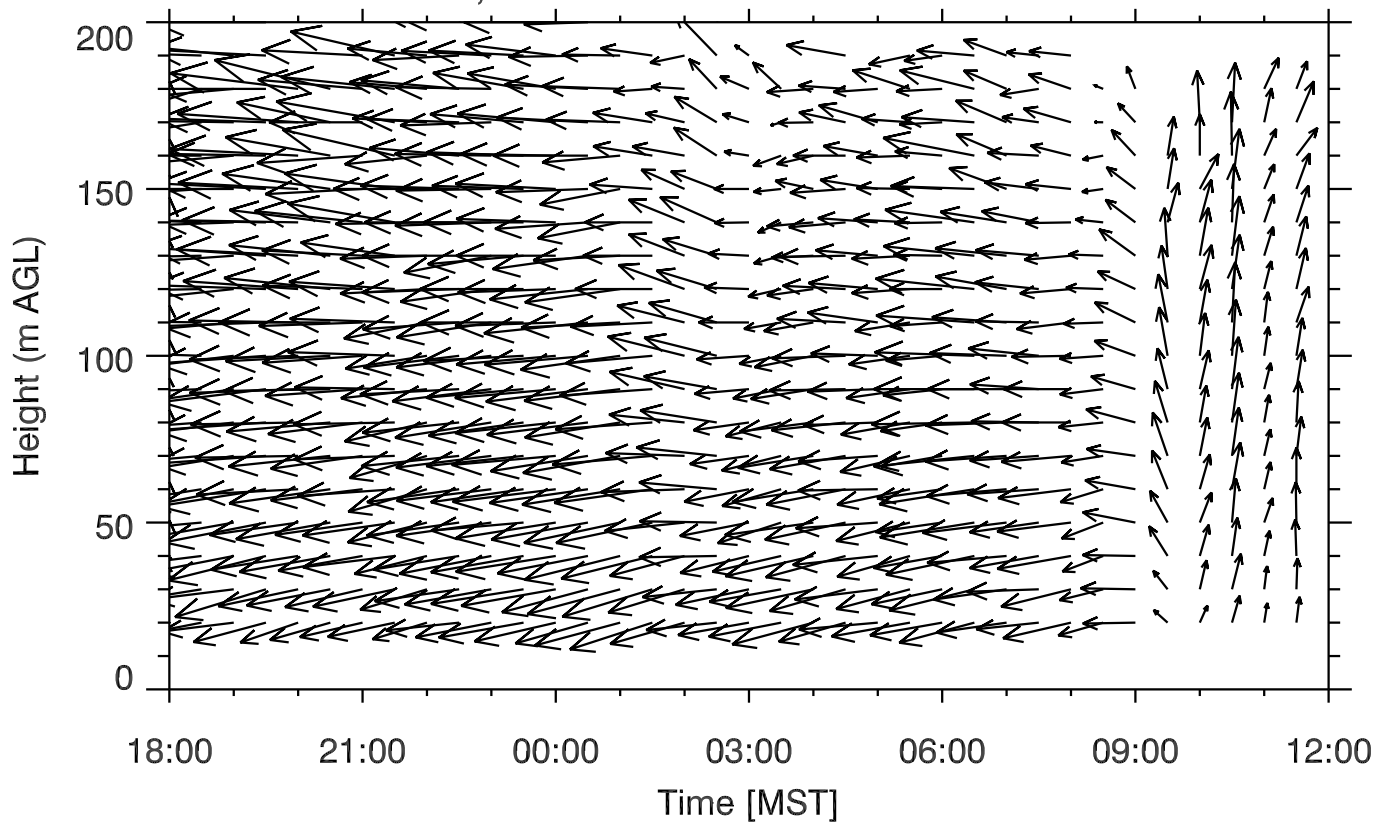


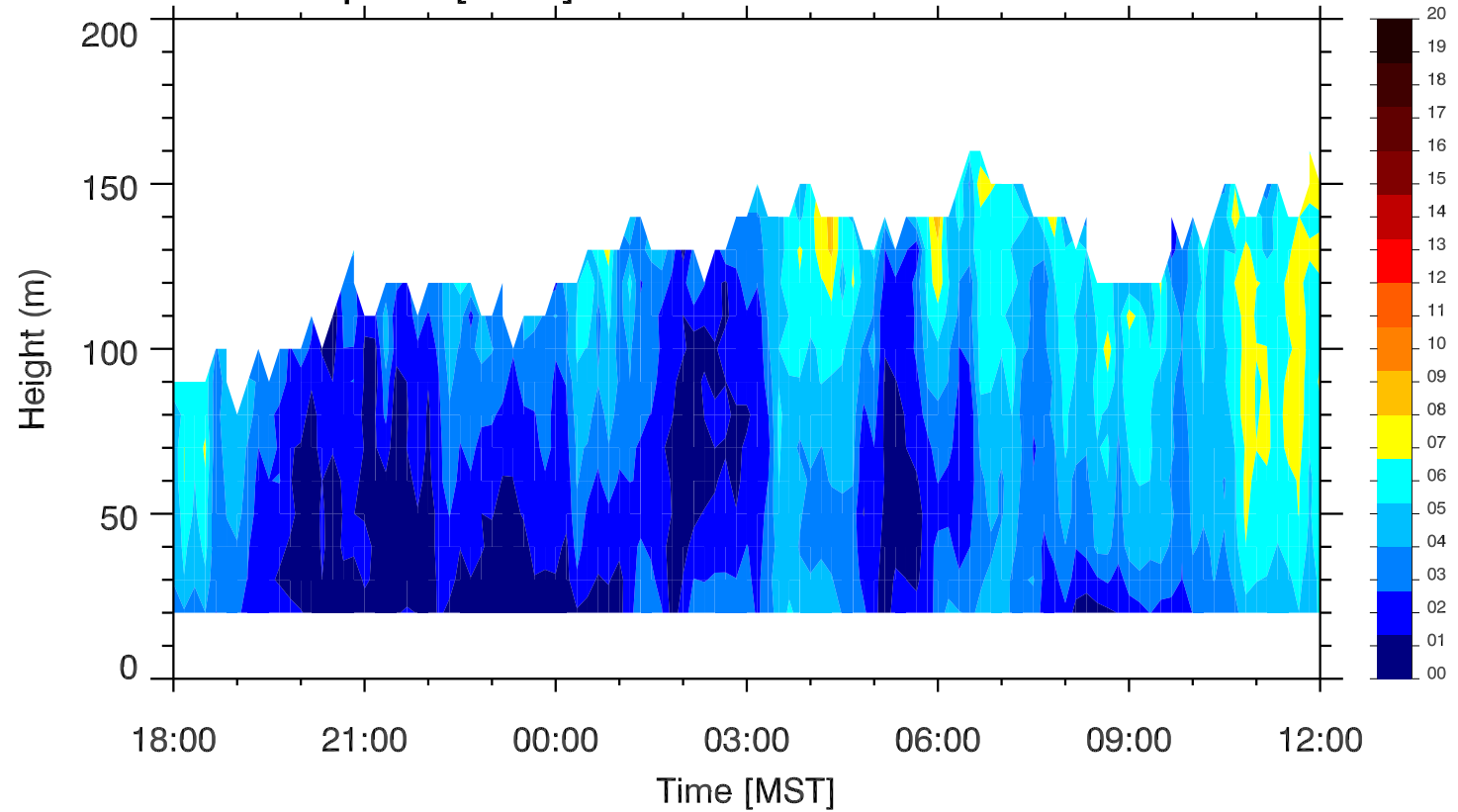
Wind speed [ $\text{m s}^{-1}$ ] 30 Jun 2010 1800 - 01 Jul 2010 1200



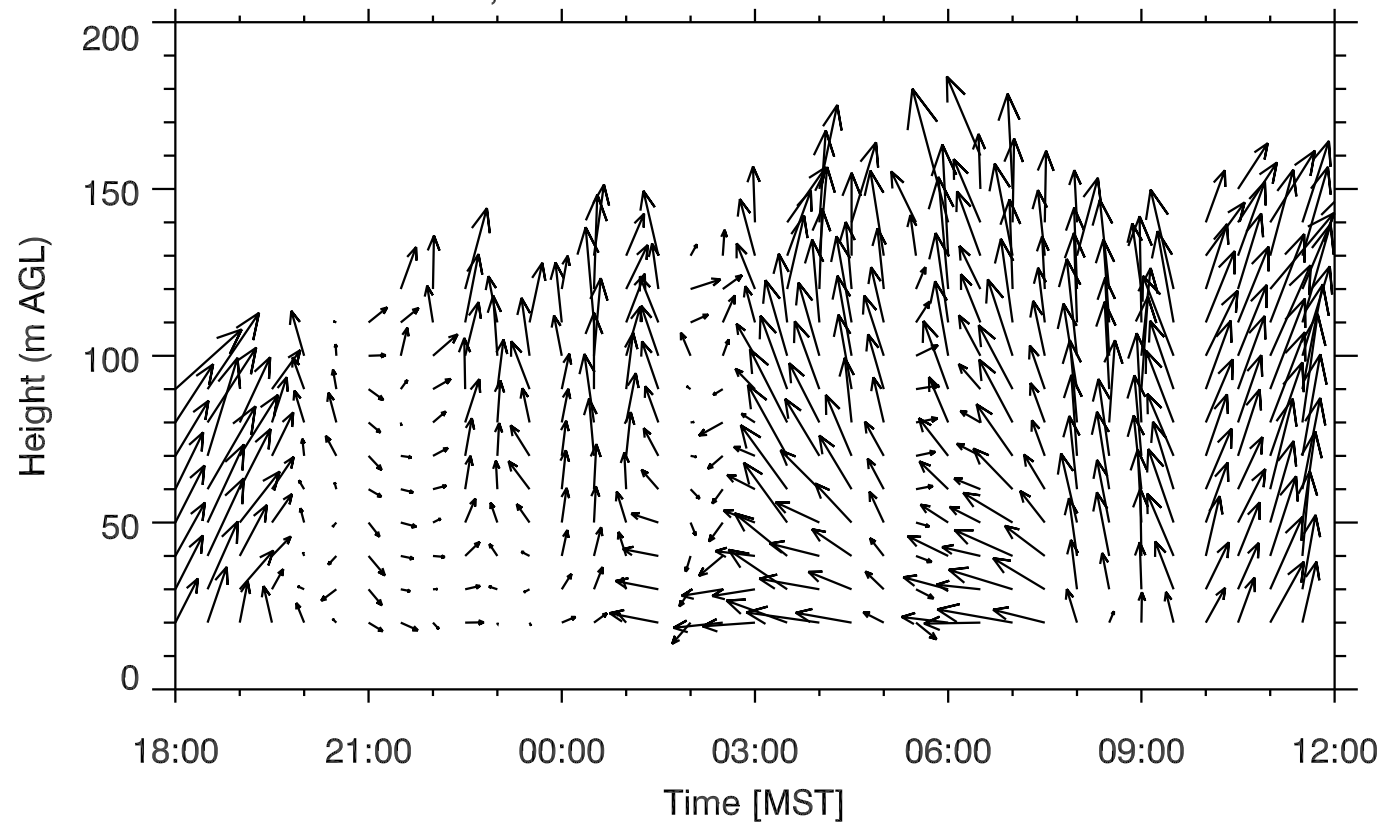
Wind field, 30 Jun 2010 1800 - 01 Jul 2010 1200



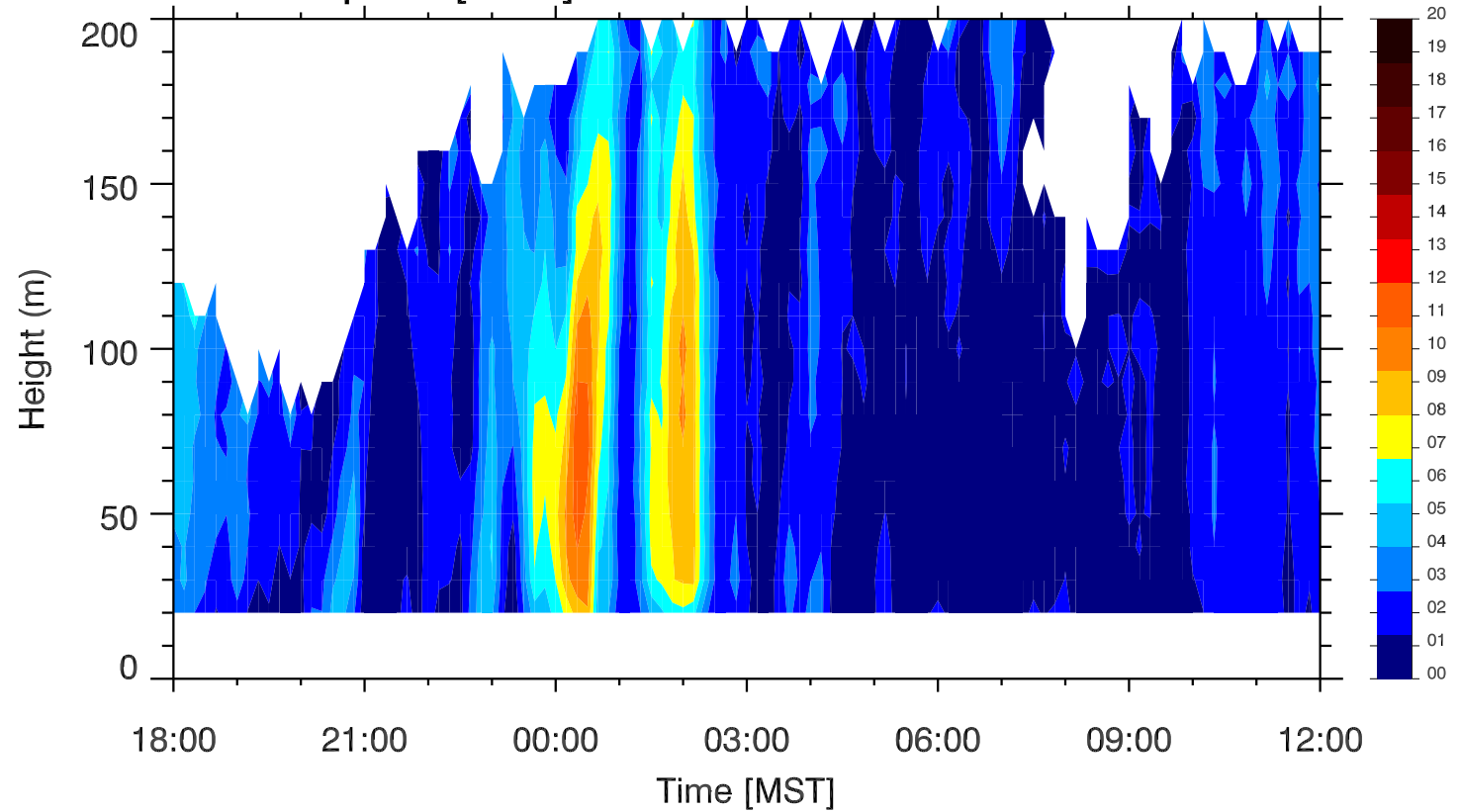
Wind speed [ $\text{m s}^{-1}$ ] 01 Jul 2010 1800 - 02 Jul 2010 1200



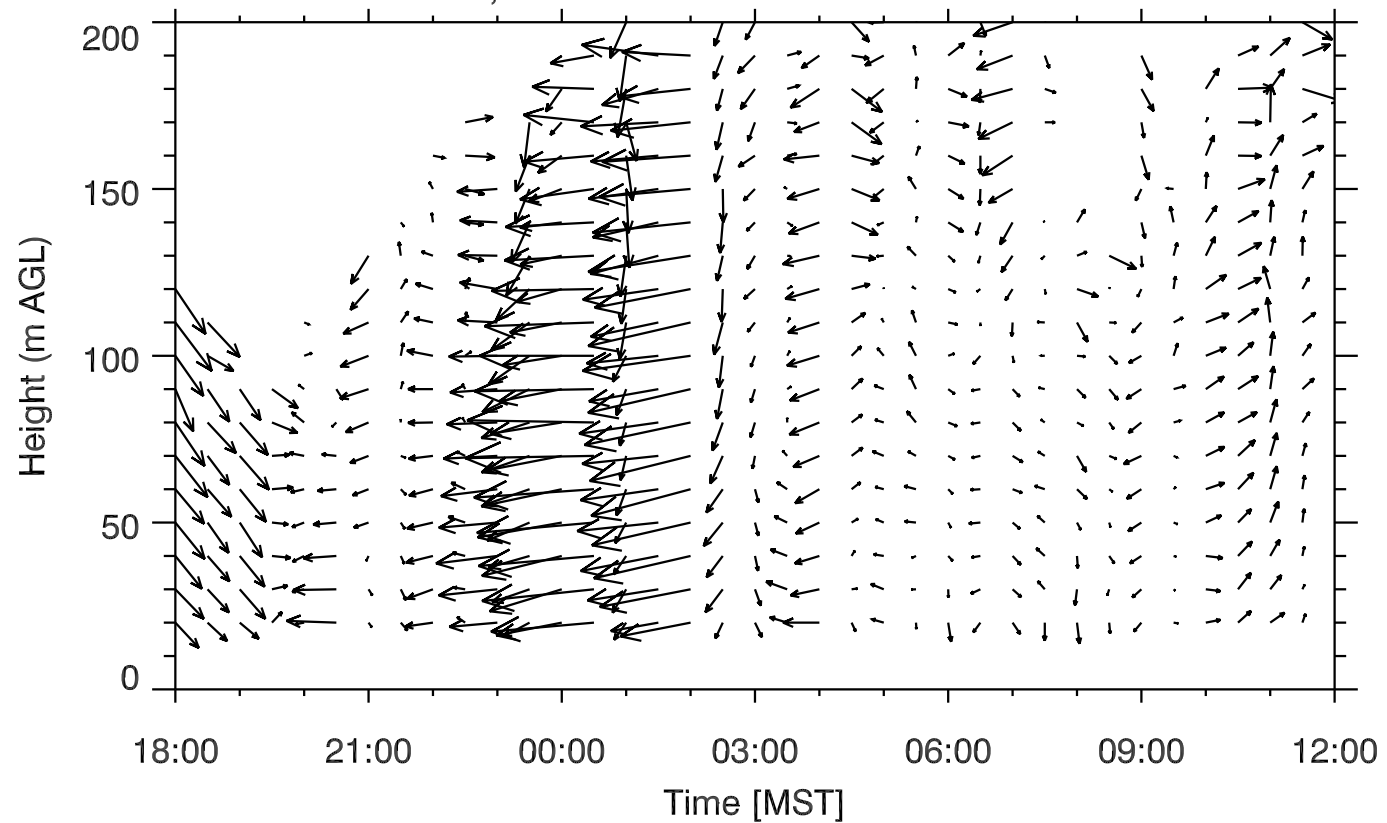
Wind field, 01 Jul 2010 1800 - 02 Jul 2010 1200



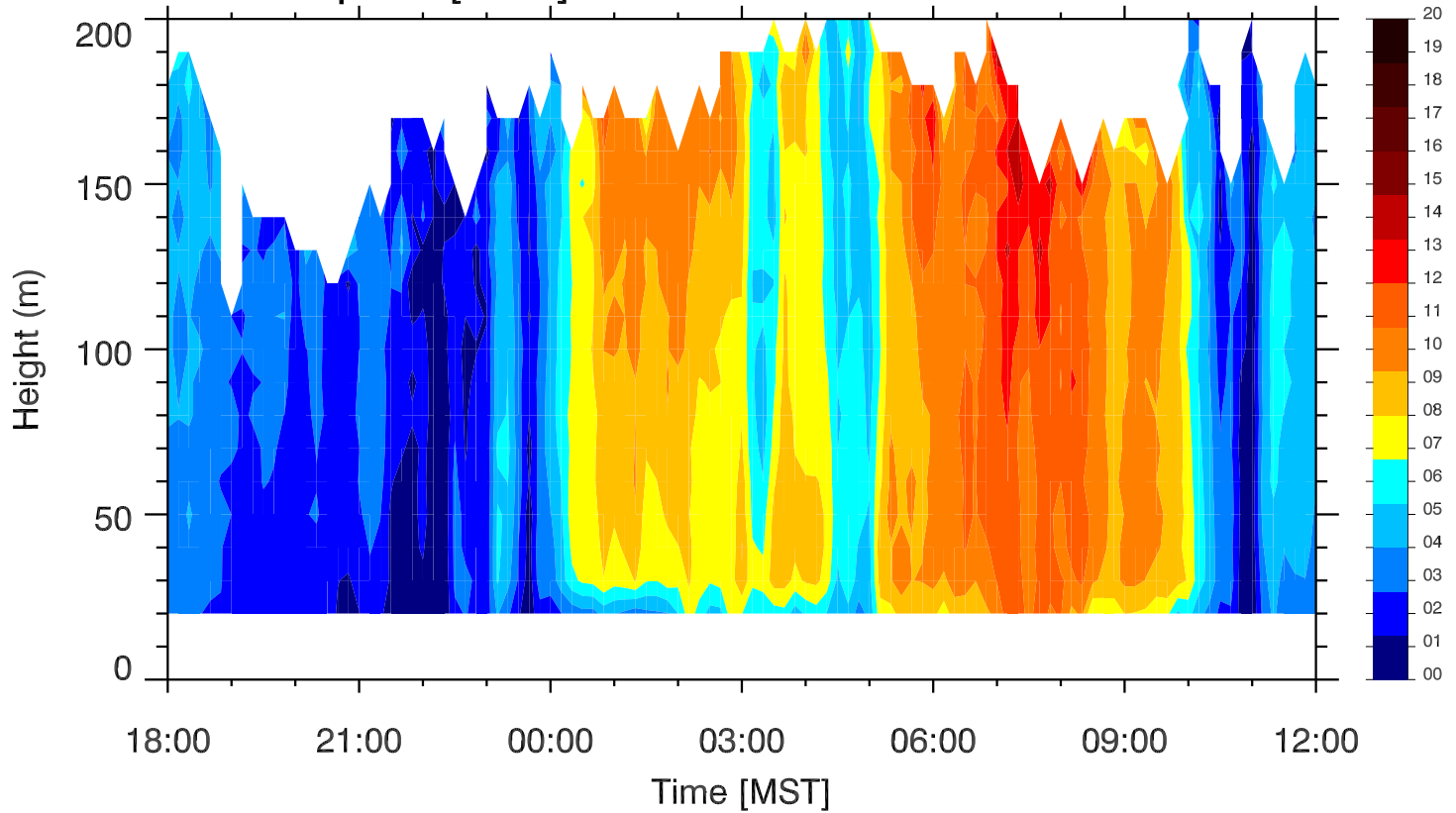
Wind speed [ $\text{m s}^{-1}$ ] 02 Jul 2010 1800 - 03 Jul 2010 1200



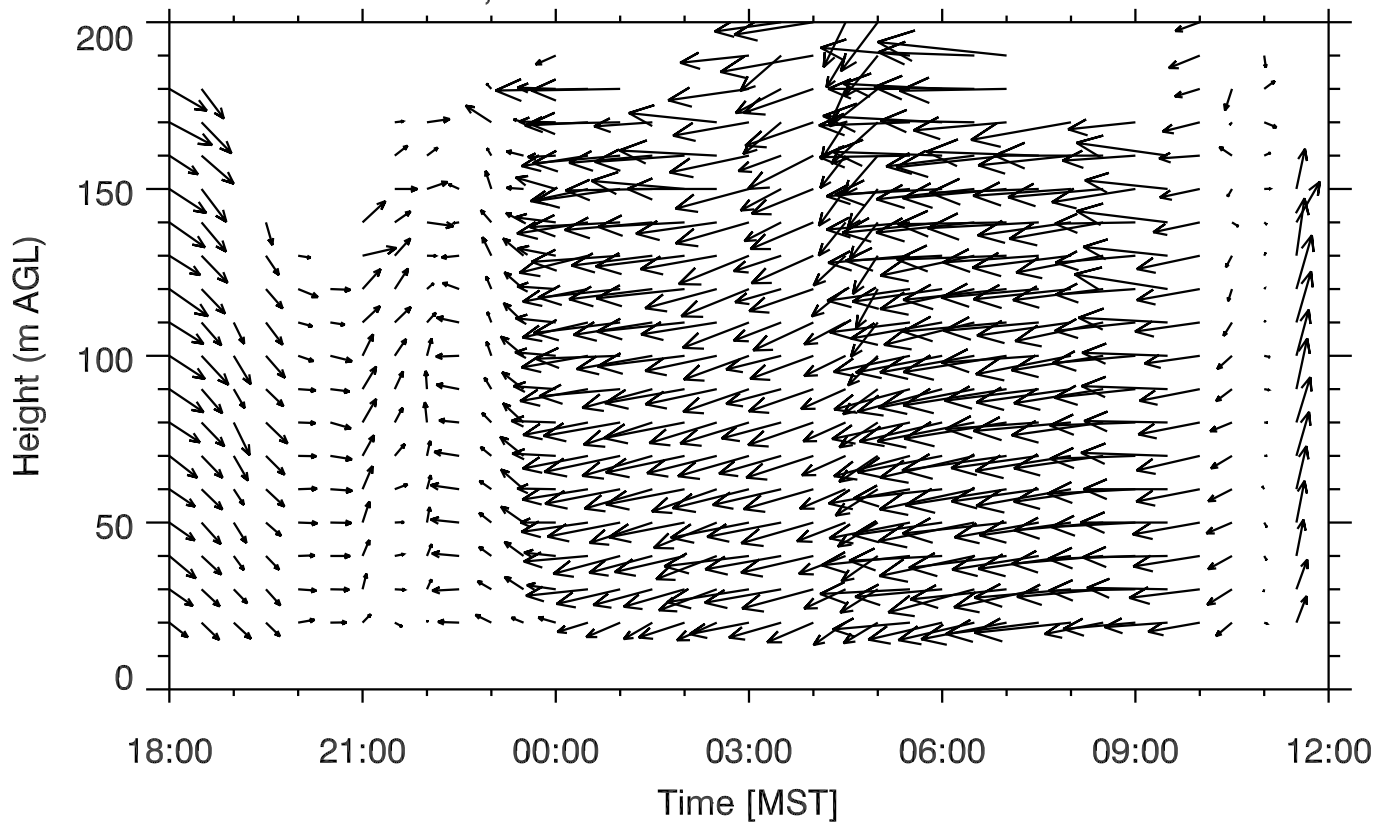
Wind field, 02 Jul 2010 1800 - 03 Jul 2010 1200



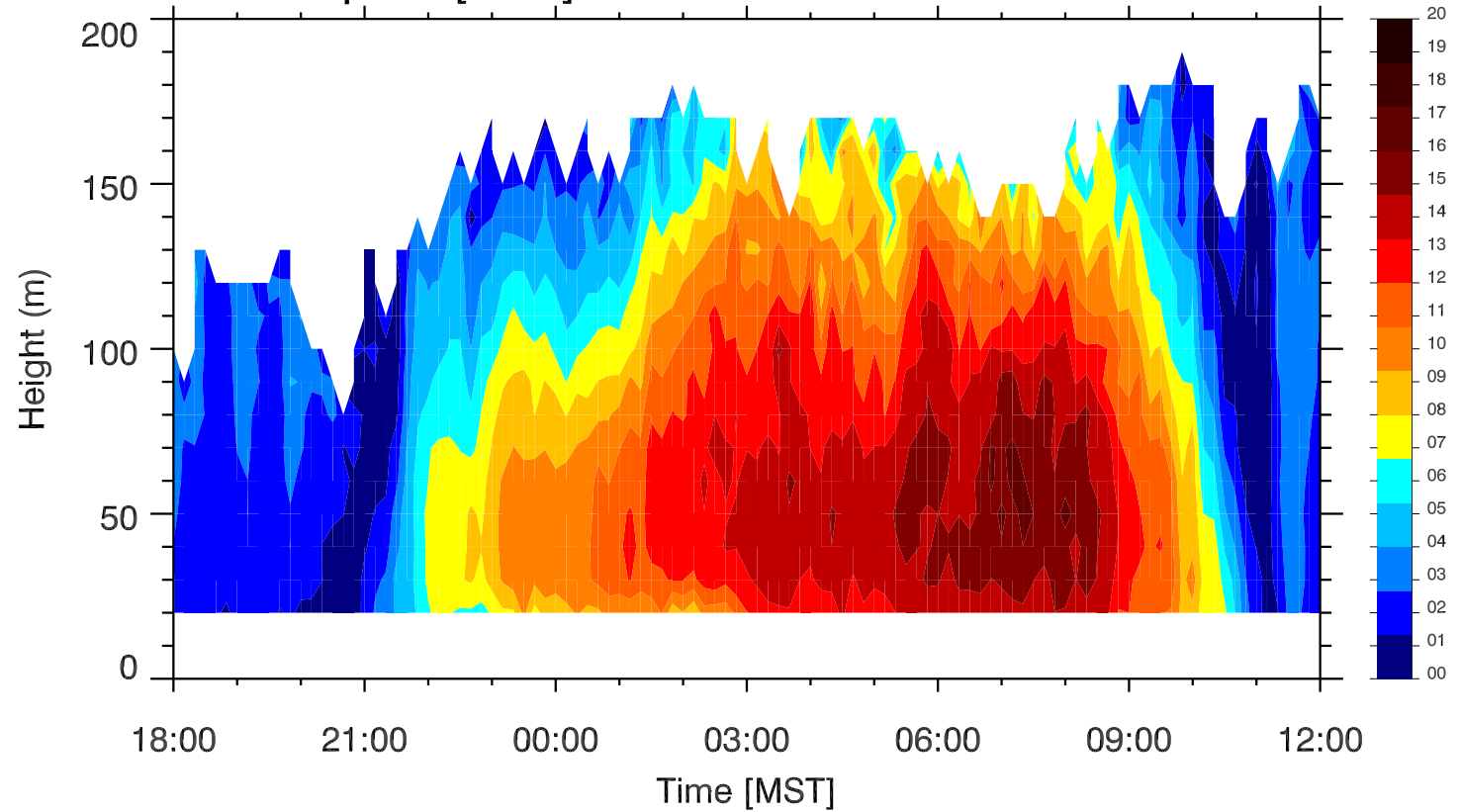
Wind speed [ $\text{m s}^{-1}$ ] 03 Jul 2010 1800 - 04 Jul 2010 1200



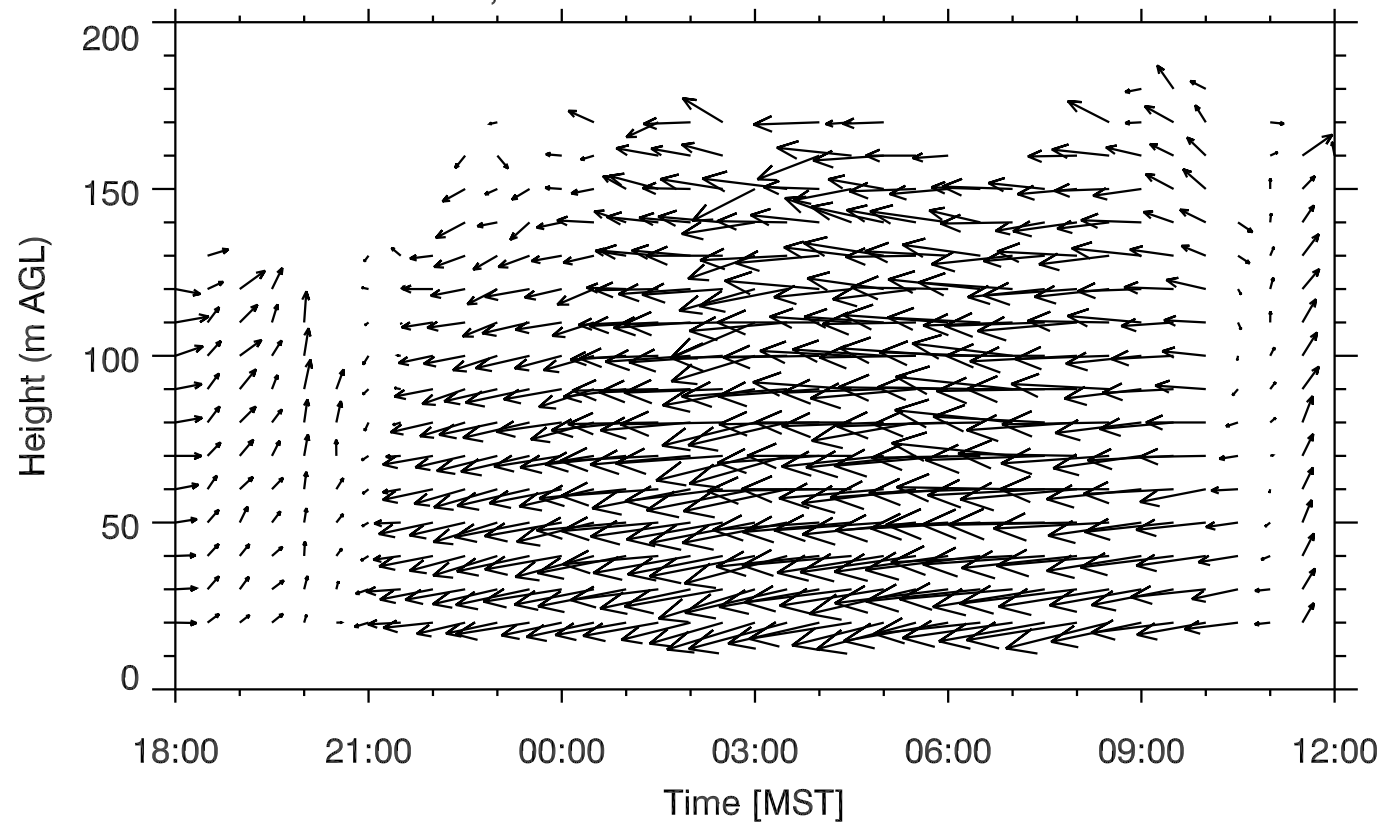
Wind field, 03 Jul 2010 1800 - 04 Jul 2010 1200



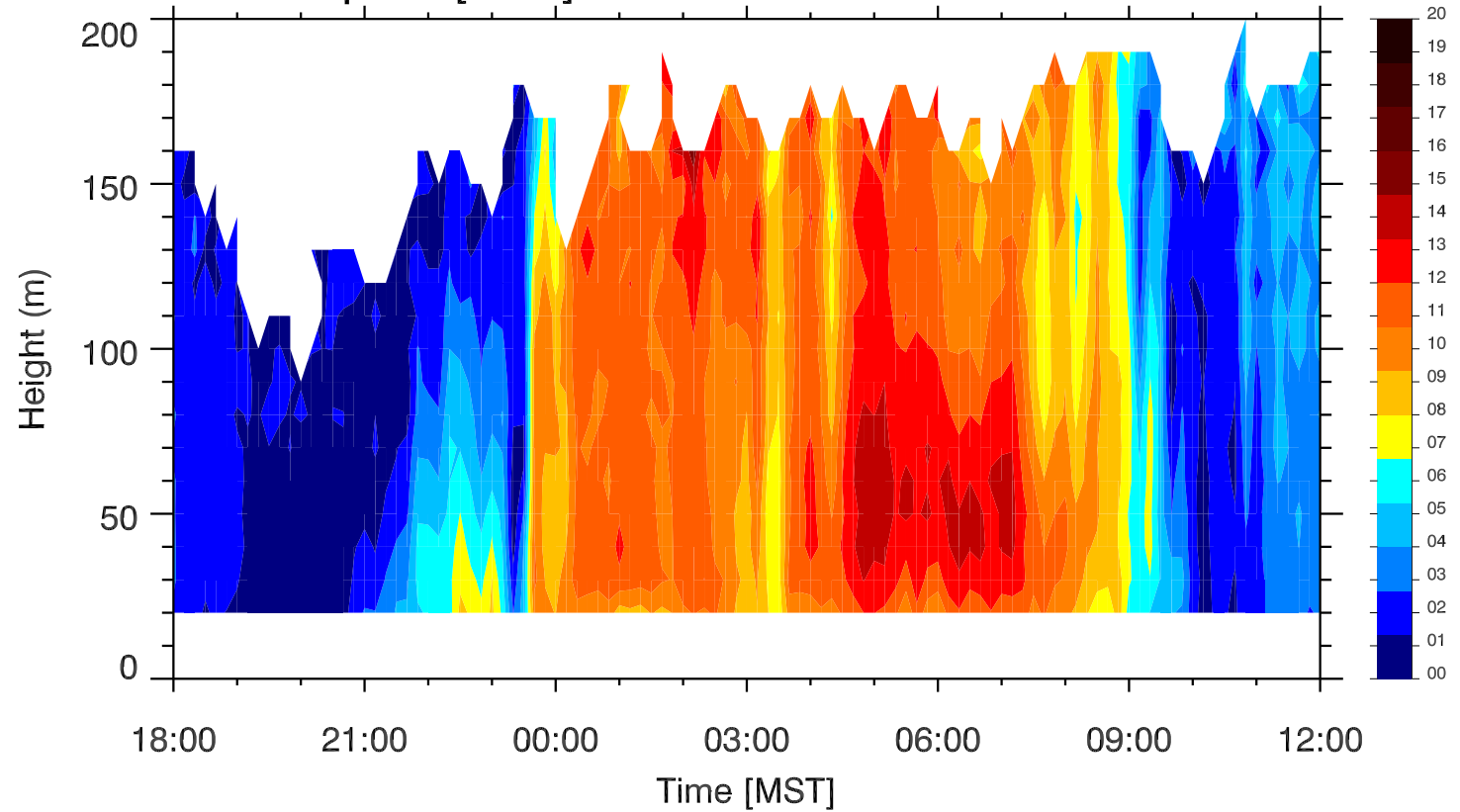
Wind speed [ $\text{m s}^{-1}$ ] 04 Jul 2010 1800 - 05 Jul 2010 1200



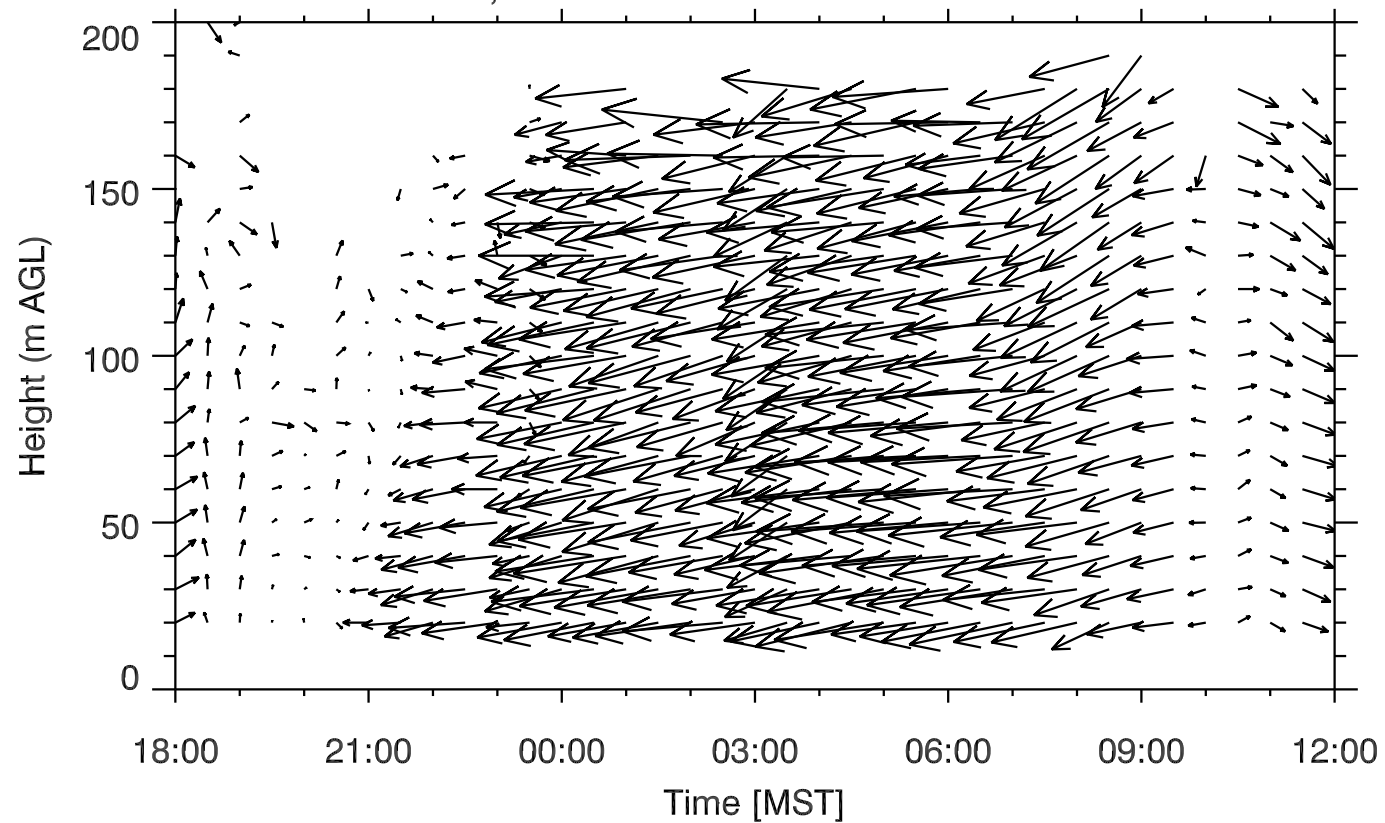
Wind field, 04 Jul 2010 1800 - 05 Jul 2010 1200



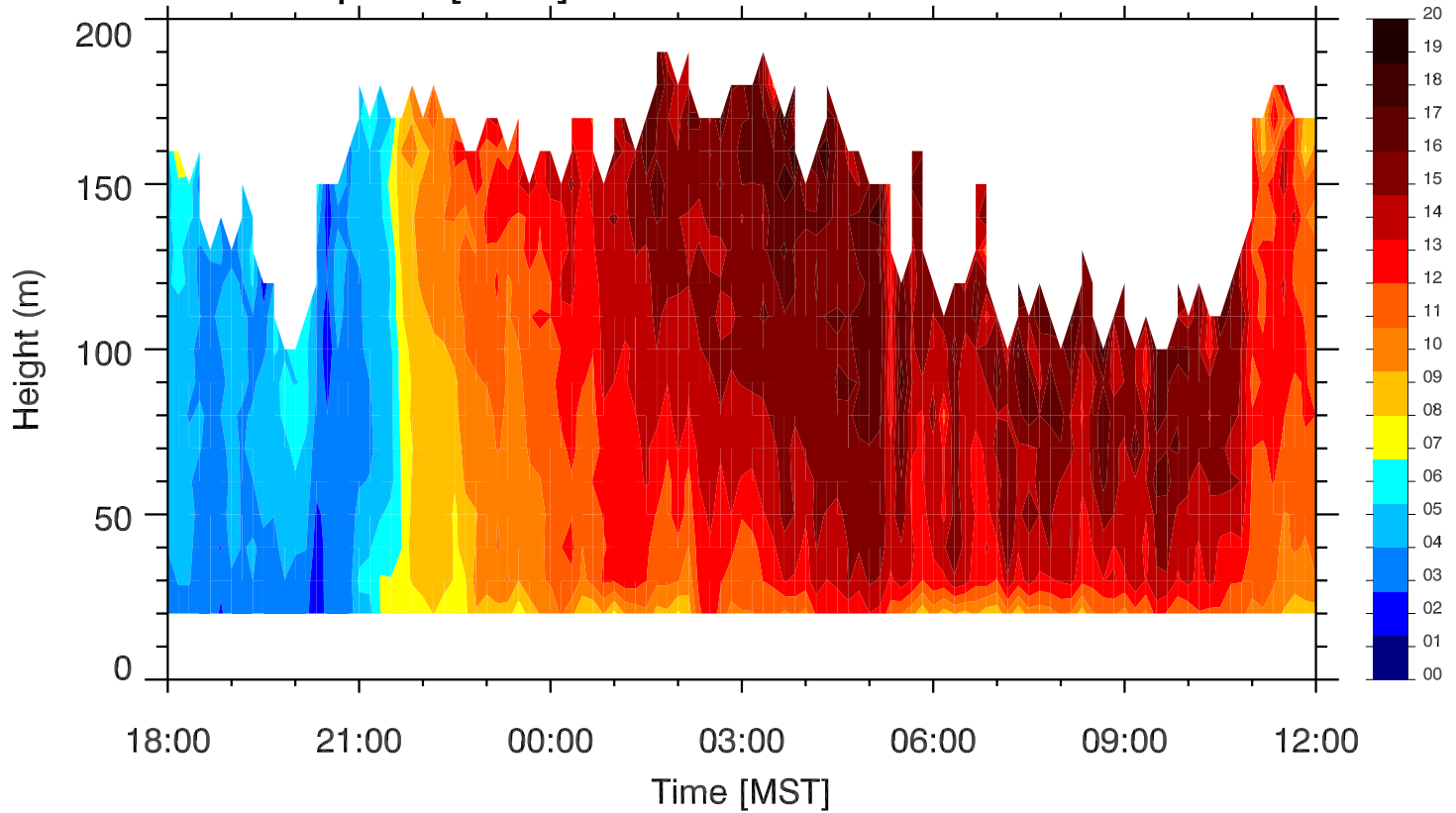
Wind speed [ $\text{m s}^{-1}$ ] 05 Jul 2010 1800 - 06 Jul 2010 1200



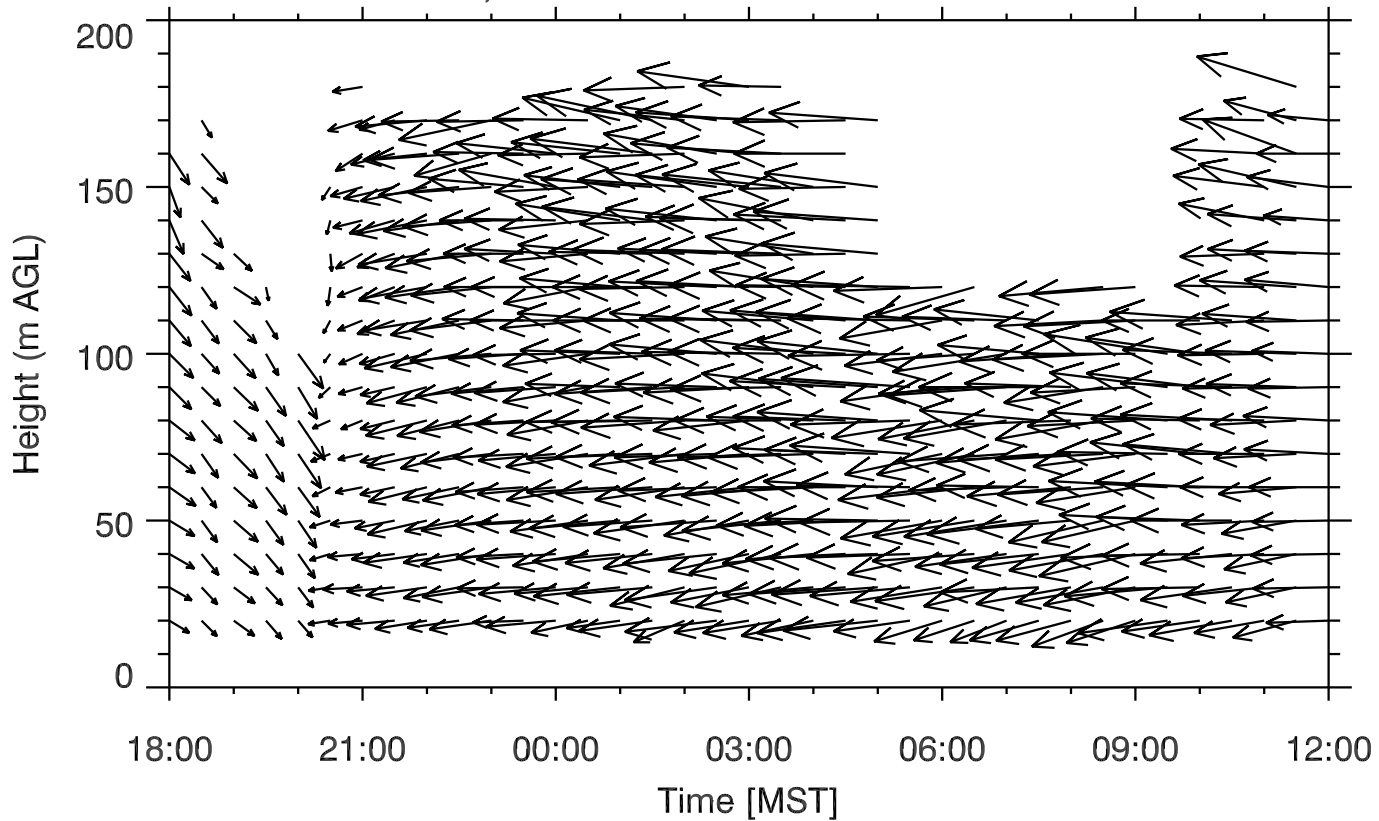
Wind field, 05 Jul 2010 1800 - 06 Jul 2010 1200



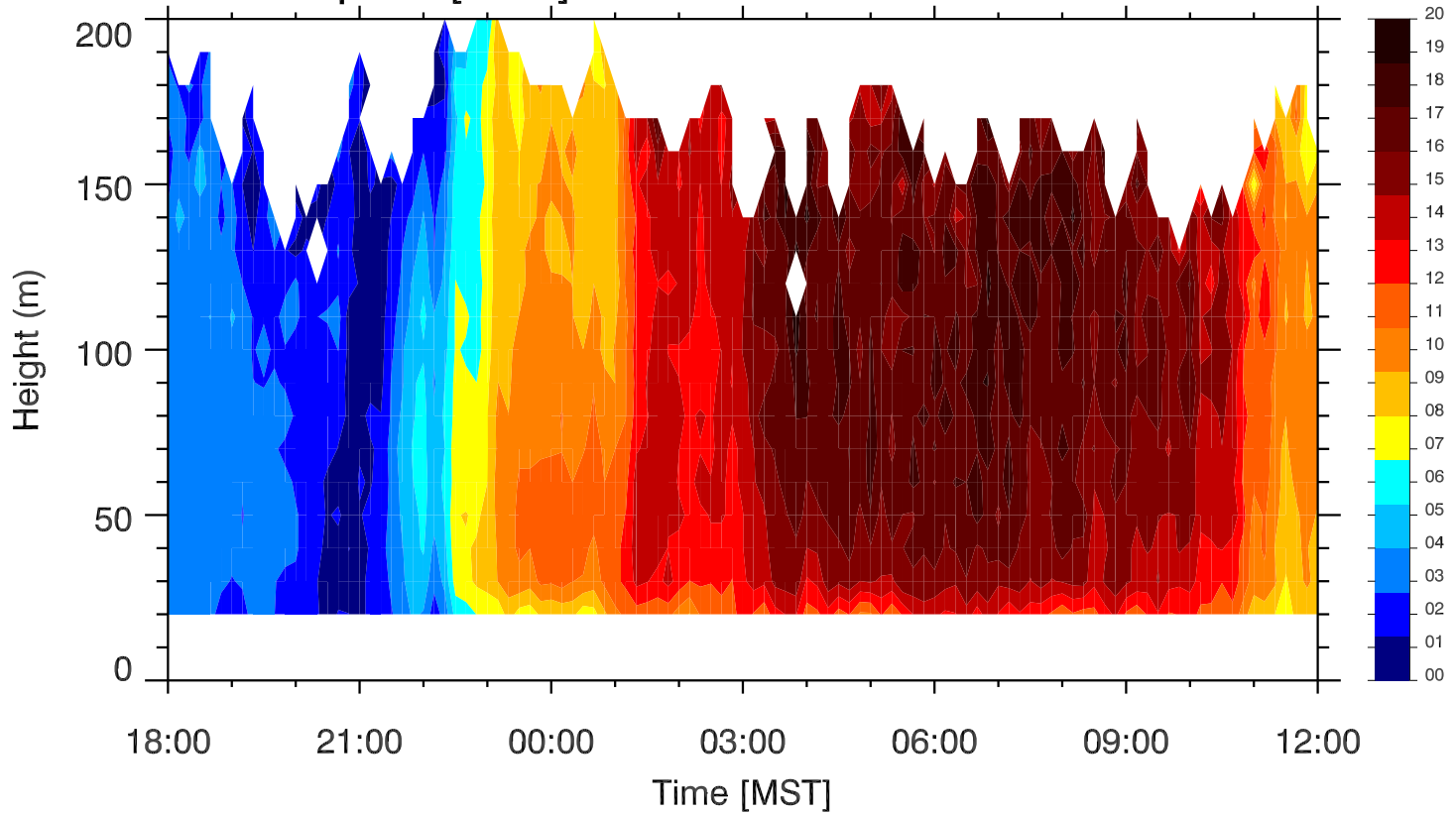
Wind speed [ $\text{m s}^{-1}$ ] 06 Jul 2010 1800 - 07 Jul 2010 1200



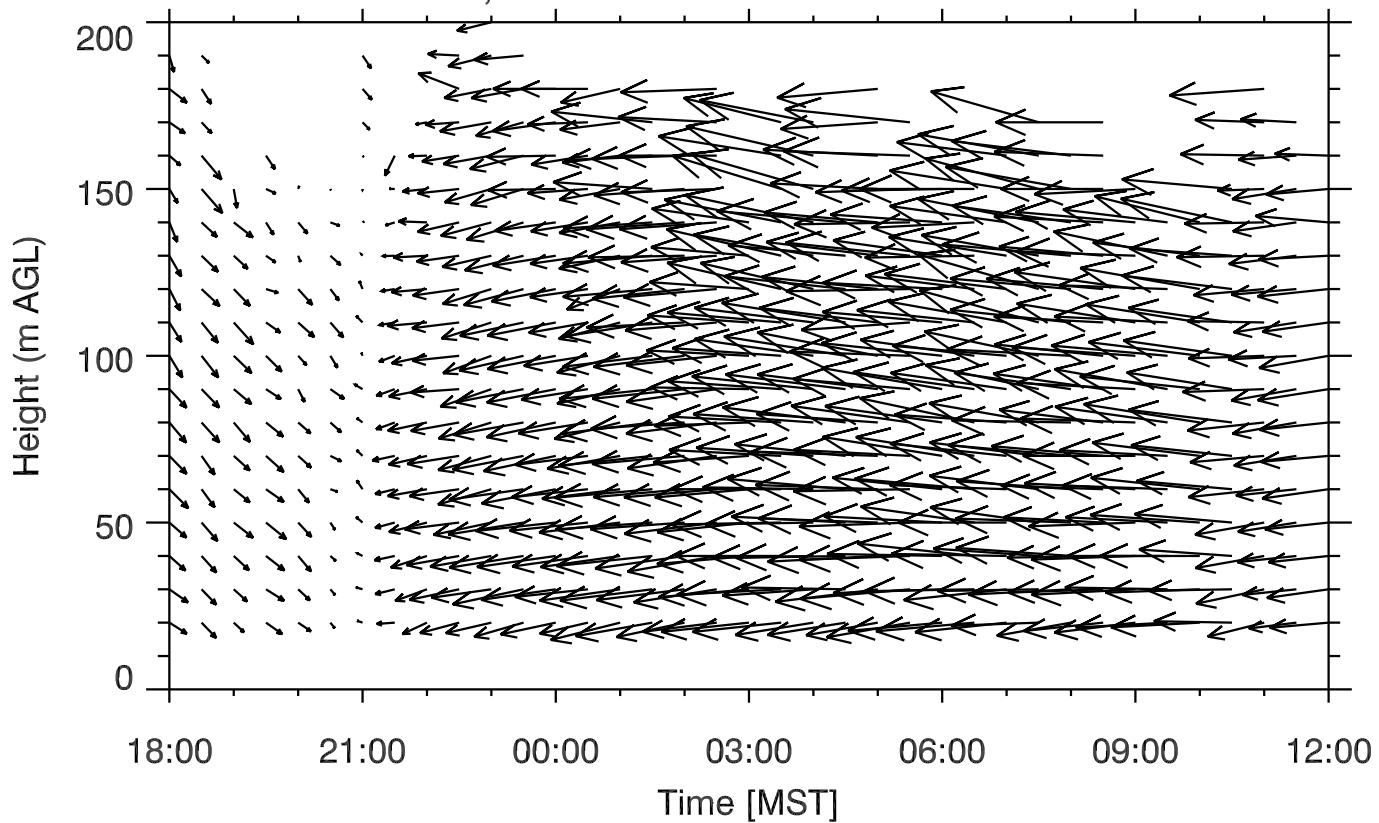
Wind field, 06 Jul 2010 1800 - 07 Jul 2010 1200



Wind speed [ $\text{m s}^{-1}$ ] 07 Jul 2010 1800 - 08 Jul 2010 1200

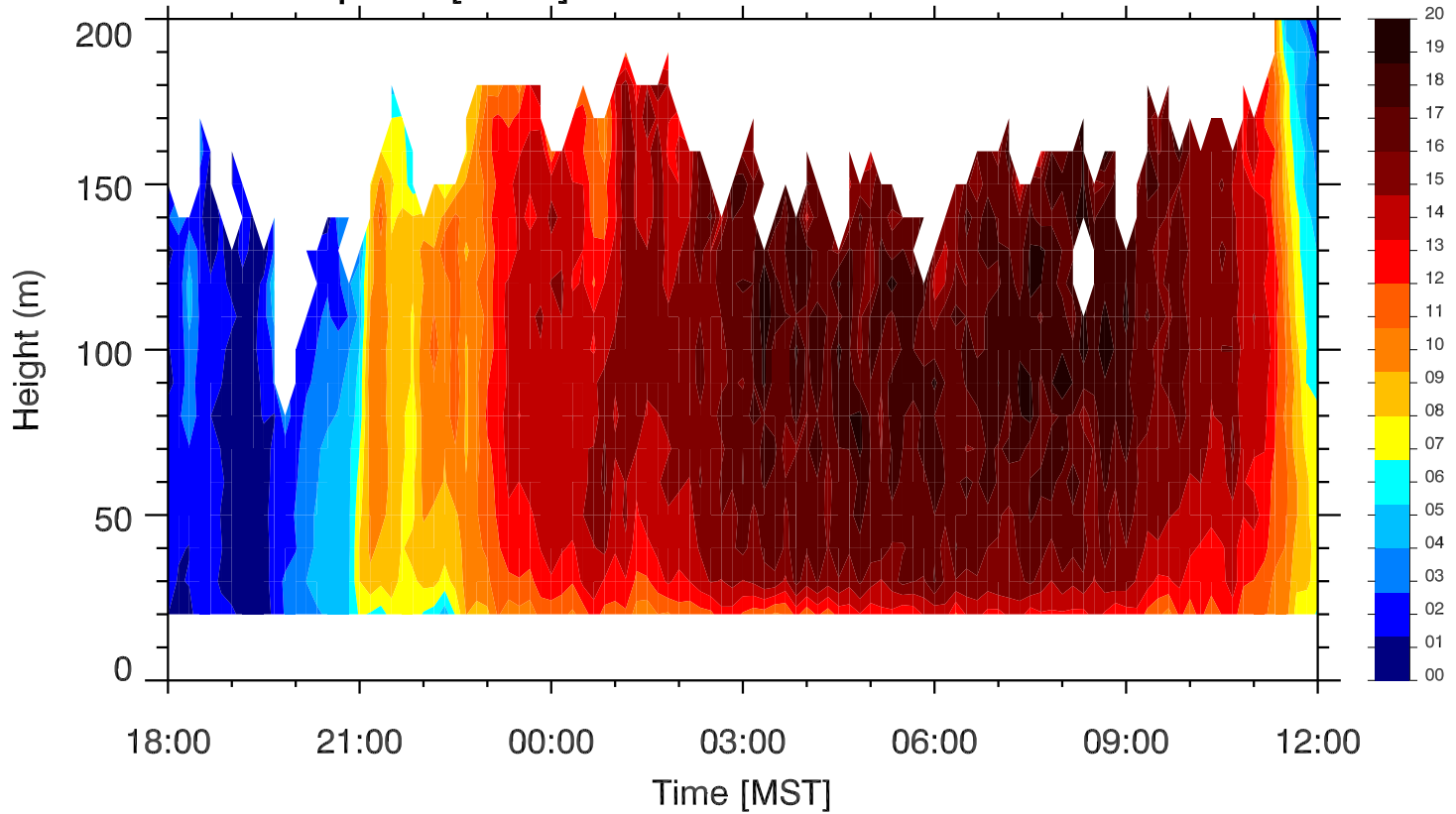


Wind field, 07 Jul 2010 1800 - 08 Jul 2010 1200

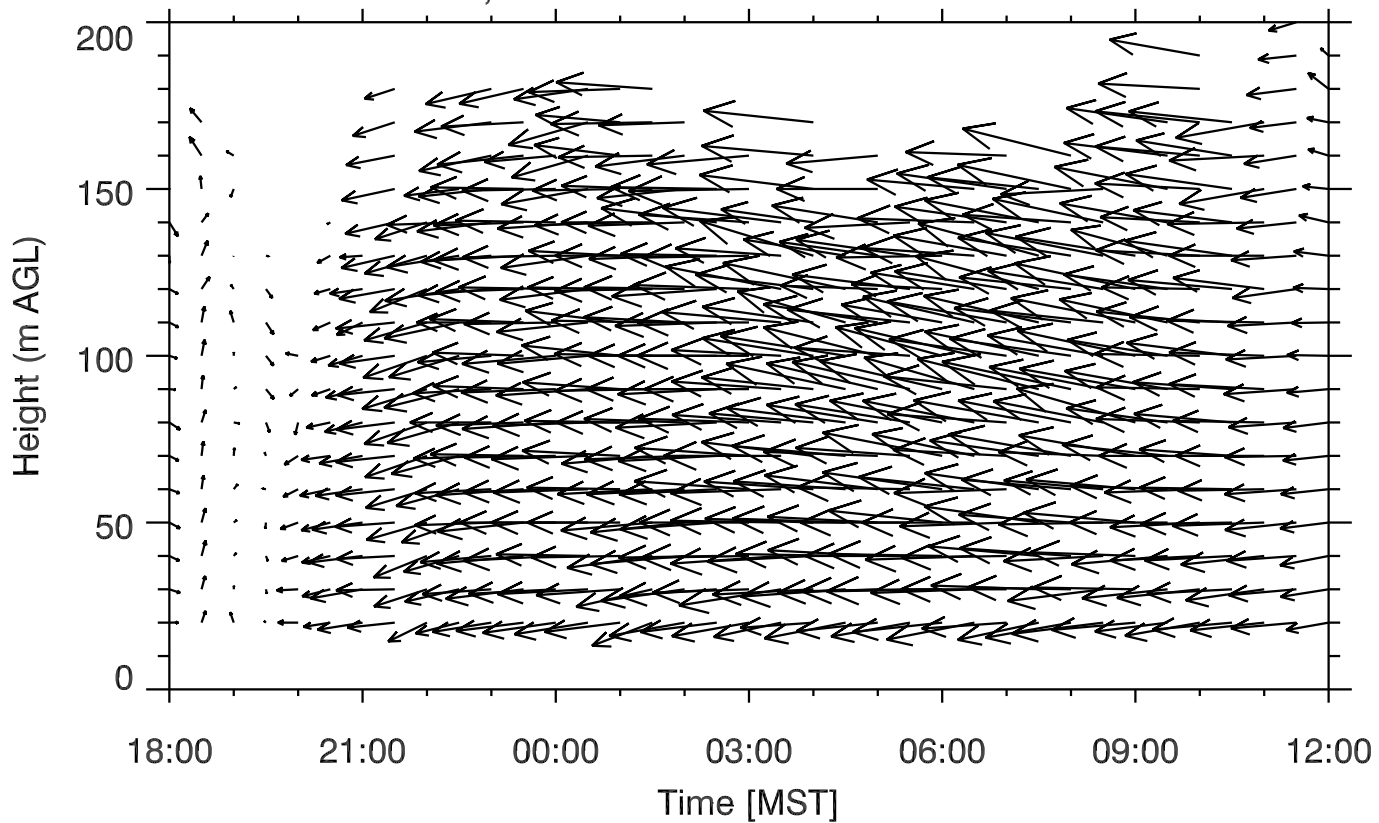




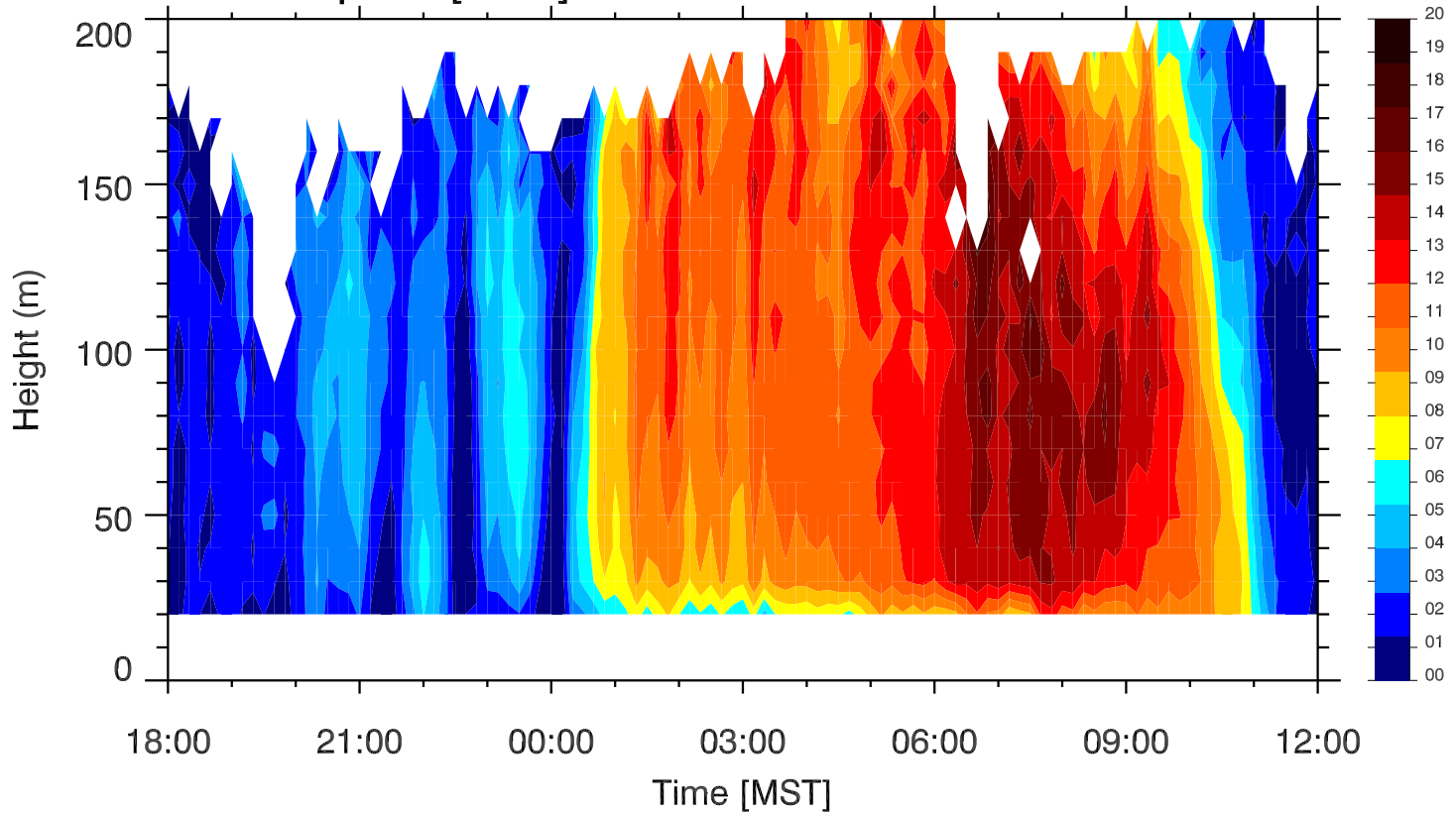
Wind speed [ $\text{m s}^{-1}$ ] 08 Jul 2010 1800 - 09 Jul 2010 1200



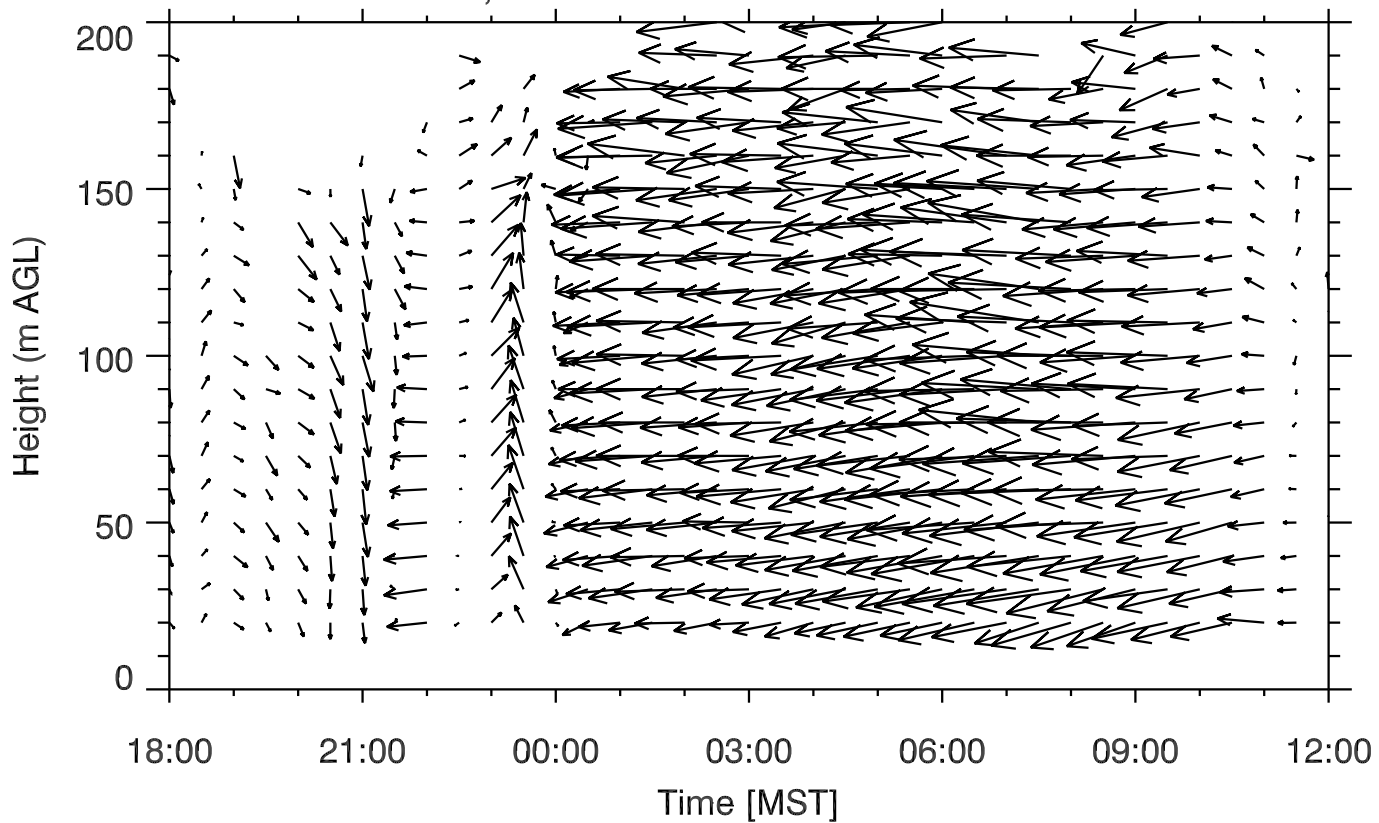
Wind field, 08 Jul 2010 1800 - 09 Jul 2010 1200



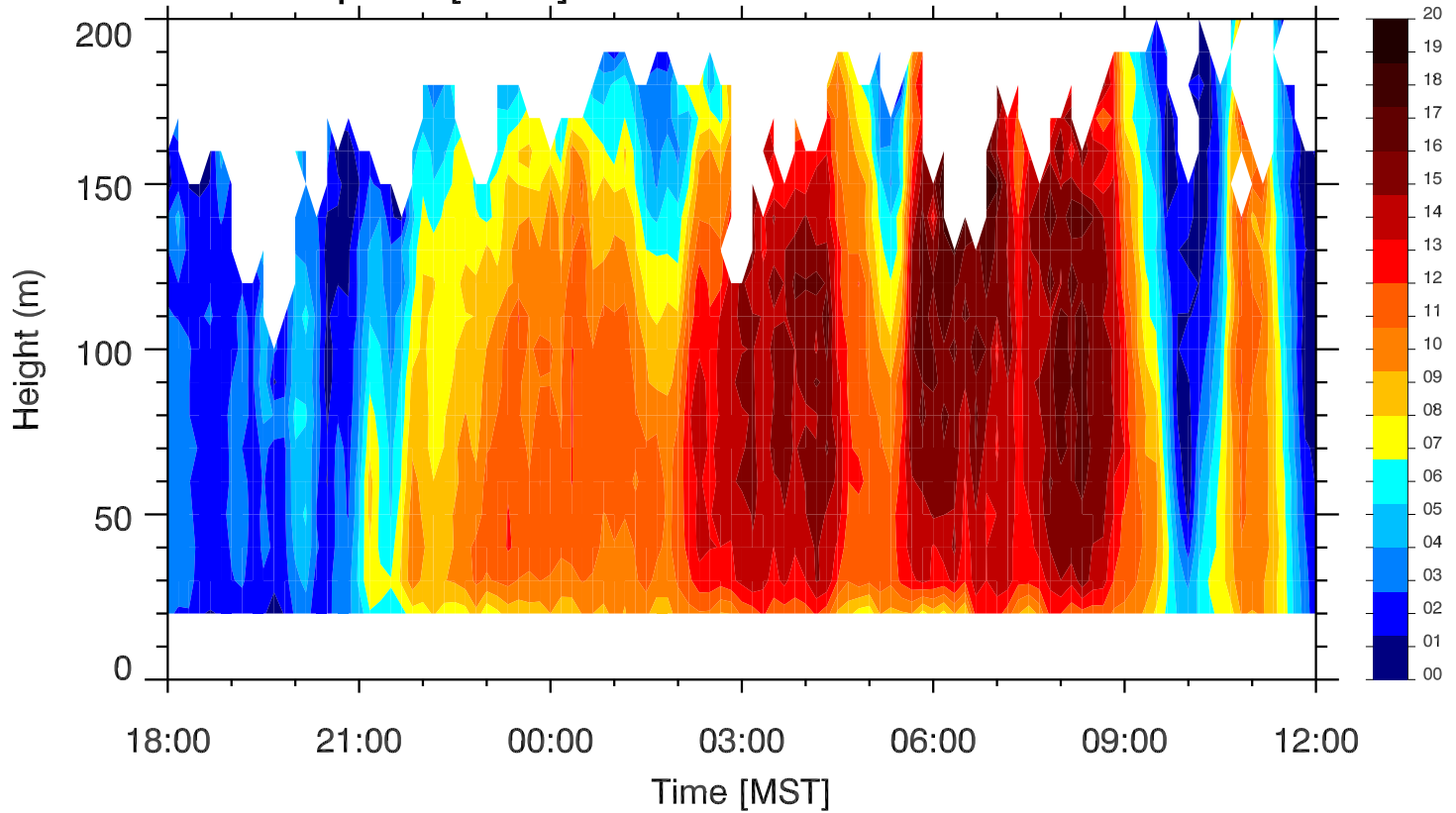
Wind speed [ $\text{m s}^{-1}$ ] 09 Jul 2010 1800 - 10 Jul 2010 1200



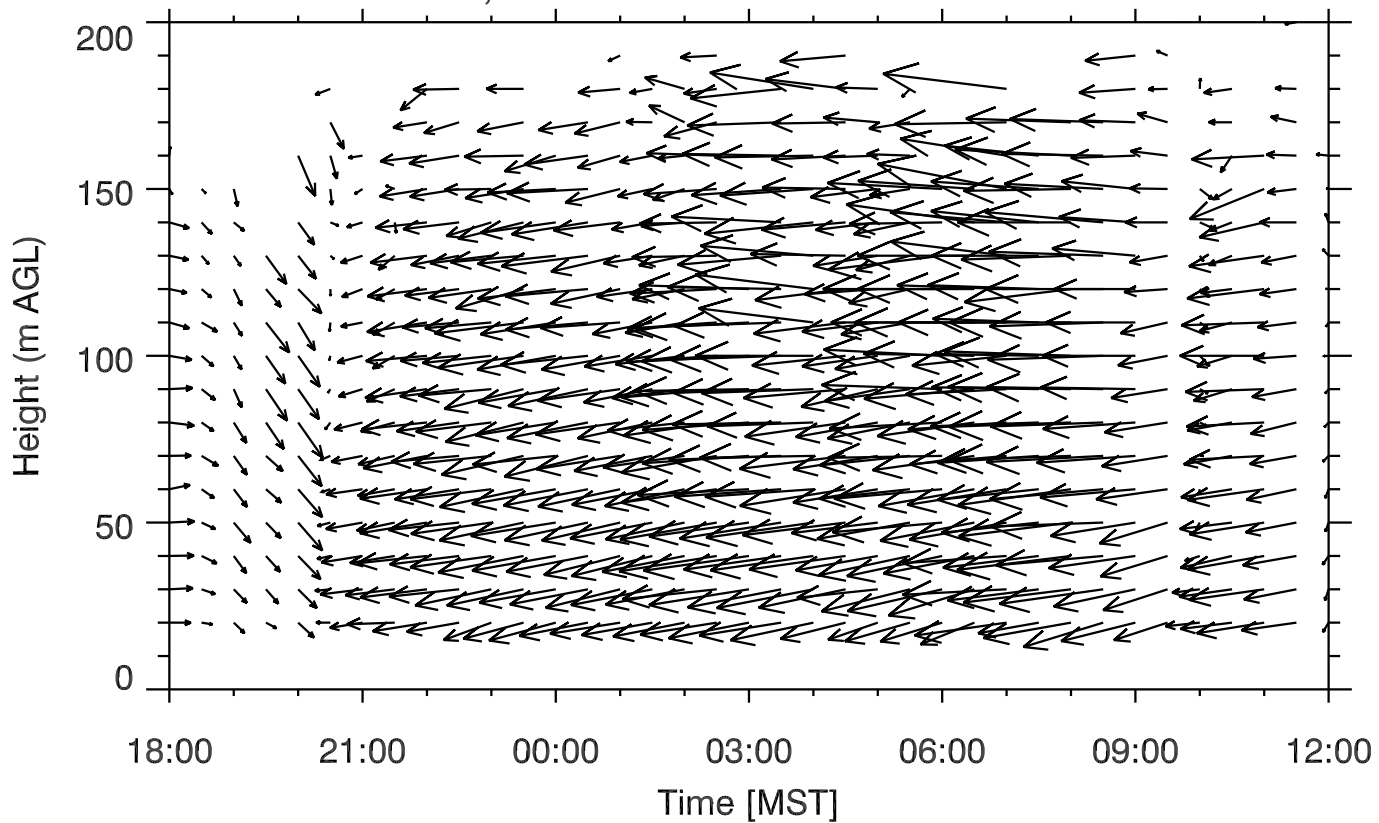
Wind field, 09 Jul 2010 1800 - 10 Jul 2010 1200



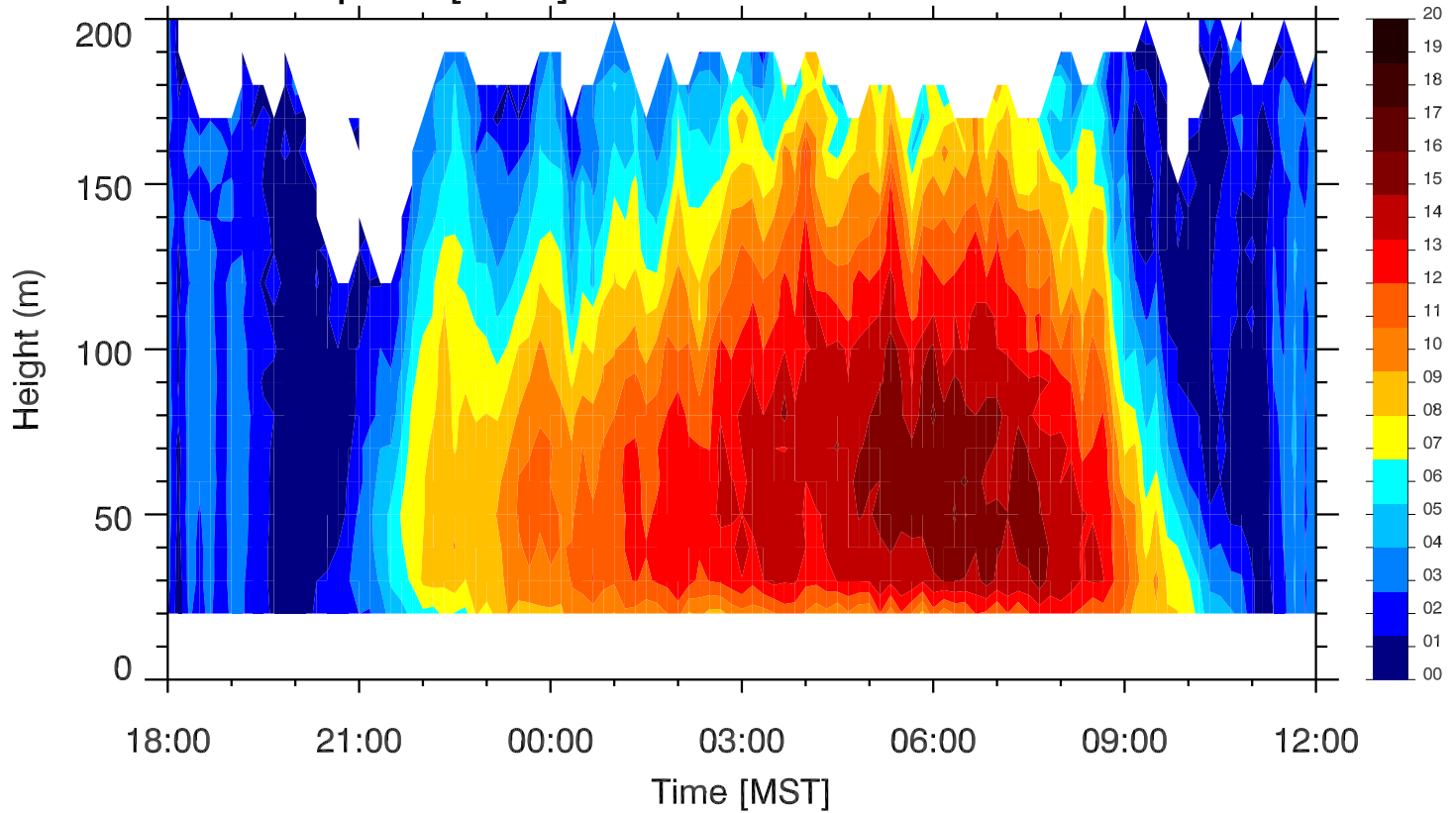
Wind speed [ $\text{m s}^{-1}$ ] 10 Jul 2010 1800 - 11 Jul 2010 1200



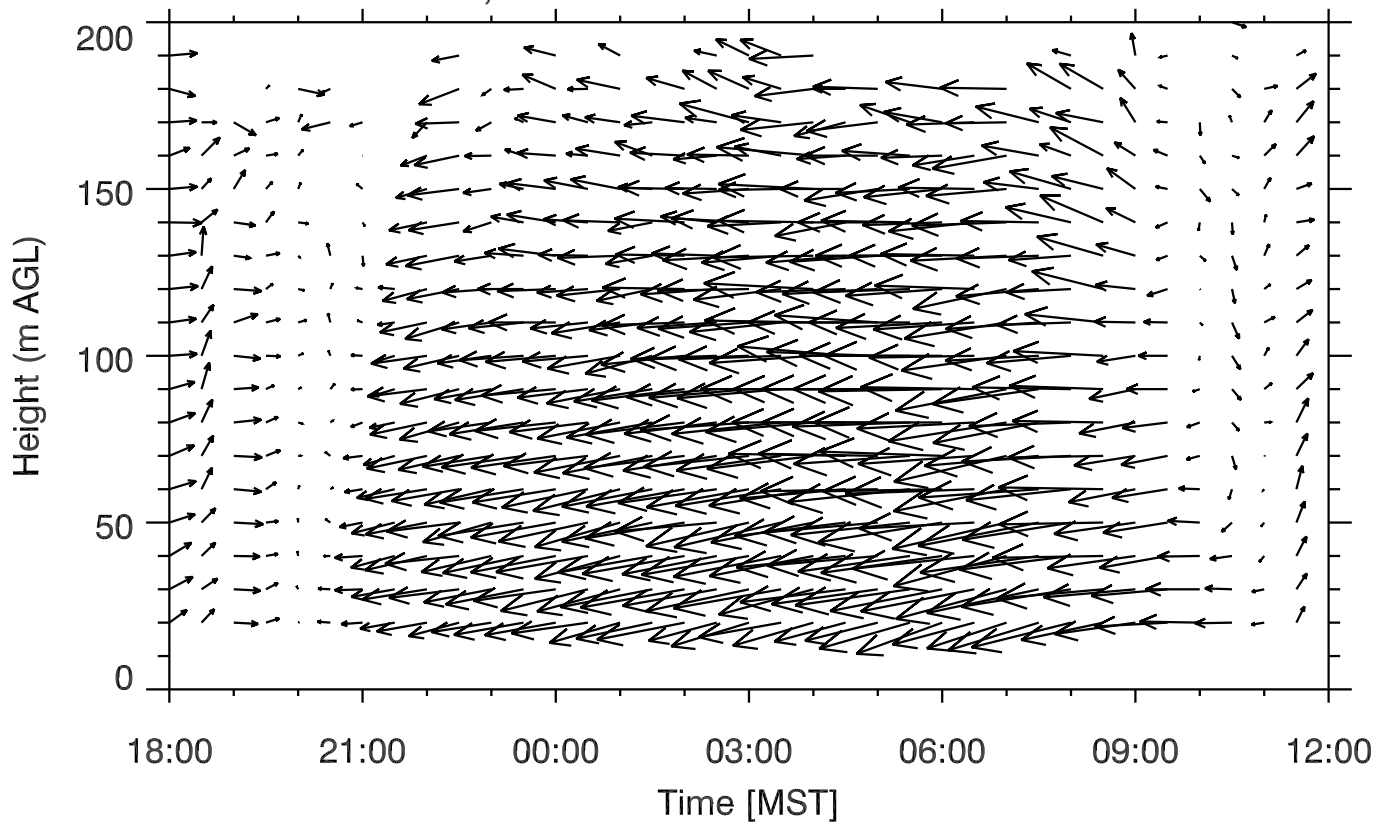
Wind field, 10 Jul 2010 1800 - 11 Jul 2010 1200



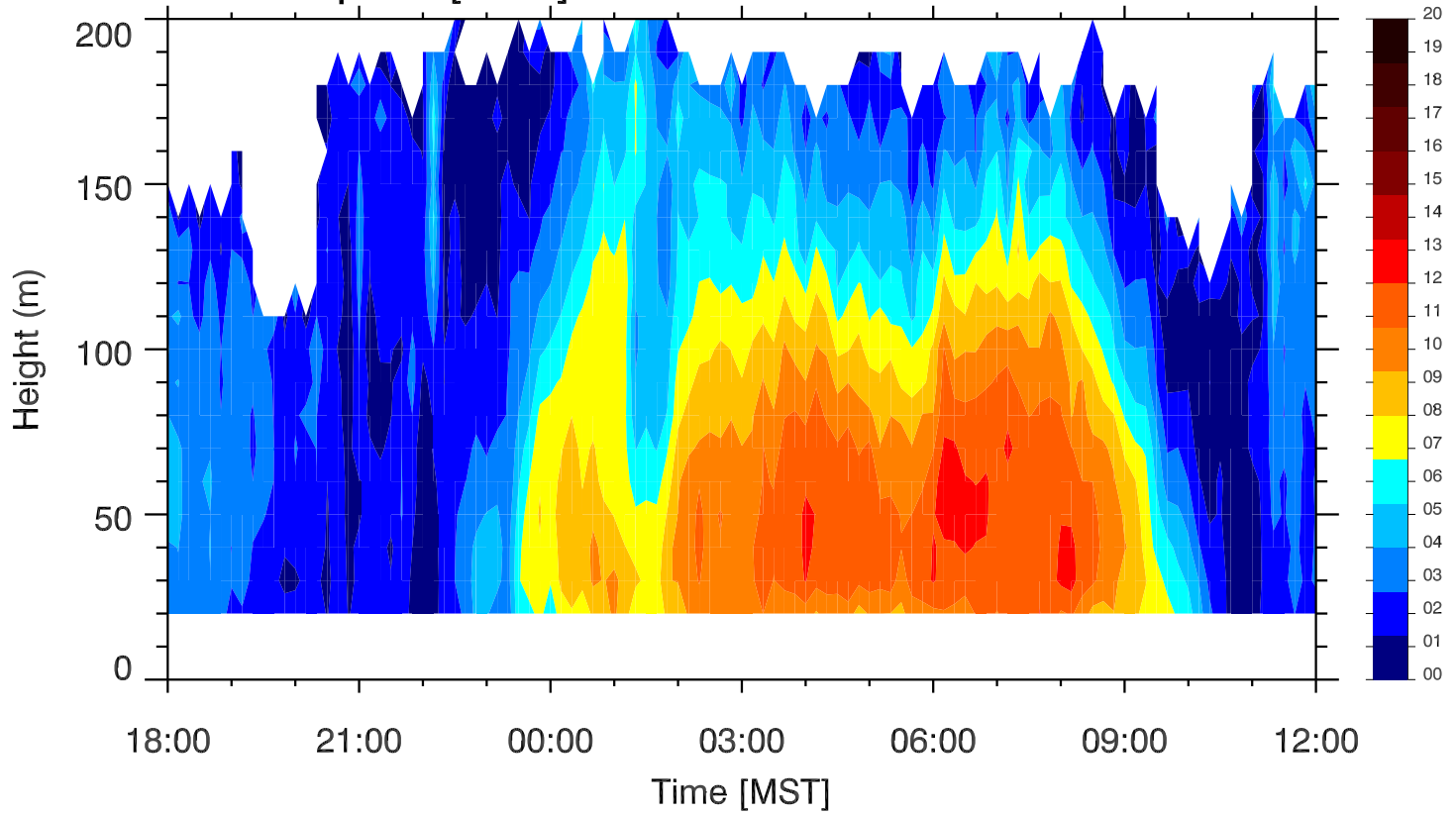
Wind speed [ $\text{m s}^{-1}$ ] 11 Jul 2010 1800 - 12 Jul 2010 1200



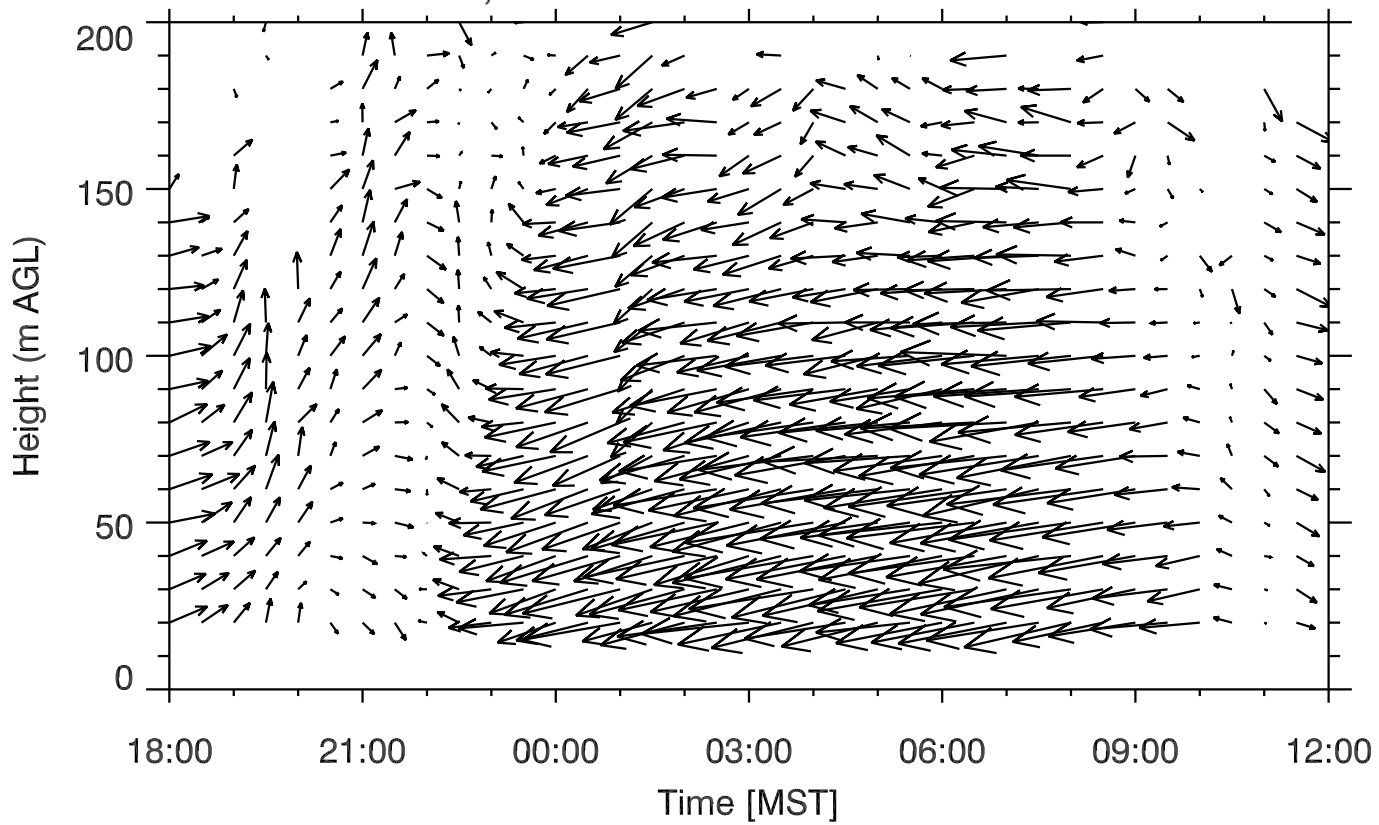
Wind field, 11 Jul 2010 1800 - 12 Jul 2010 1200



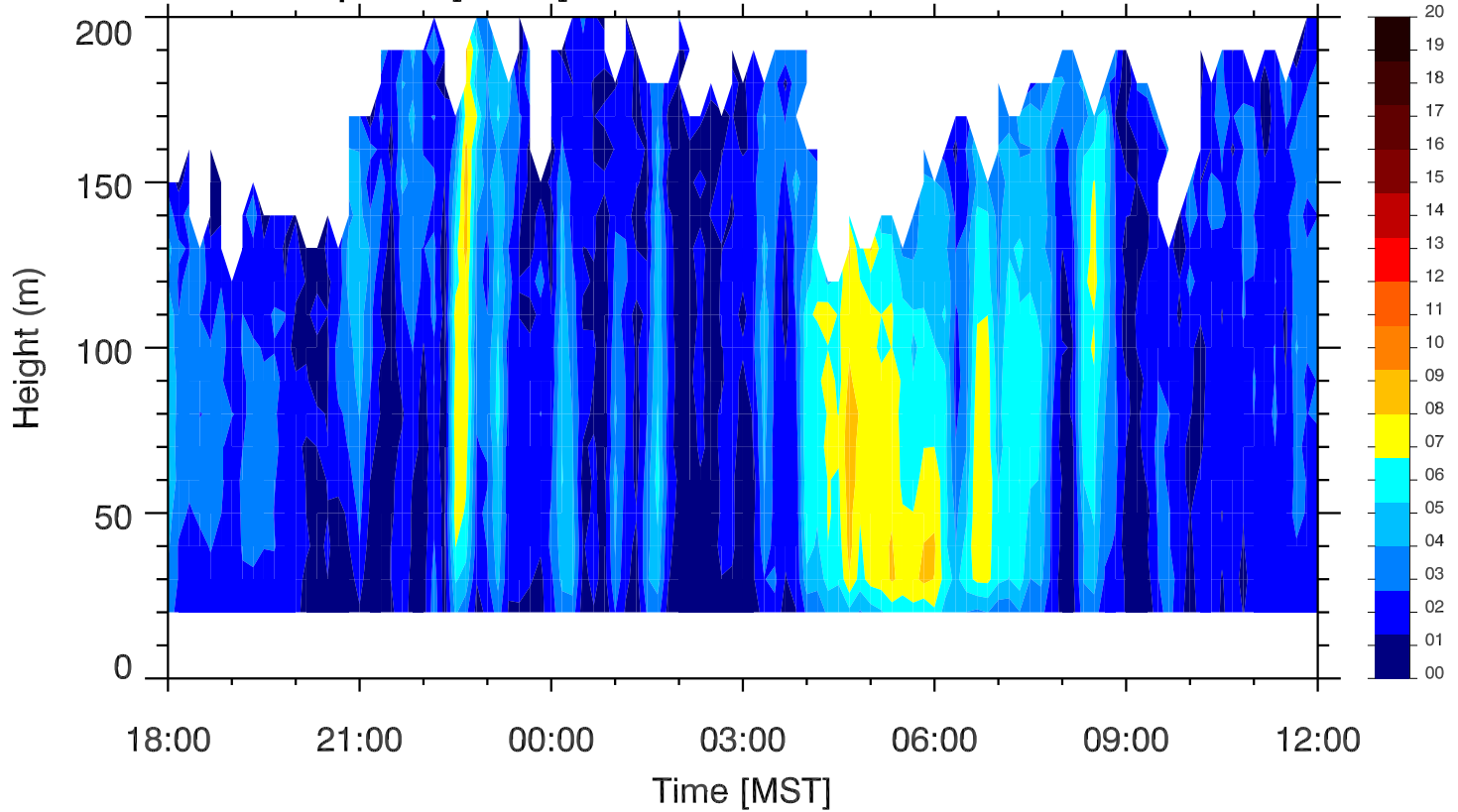
Wind speed [ $\text{m s}^{-1}$ ] 12 Jul 2010 1800 - 13 Jul 2010 1200



Wind field, 12 Jul 2010 1800 - 13 Jul 2010 1200



Wind speed [ $\text{m s}^{-1}$ ] 13 Jul 2010 1800 - 14 Jul 2010 1200



Wind field, 13 Jul 2010 1800 - 14 Jul 2010 1200

