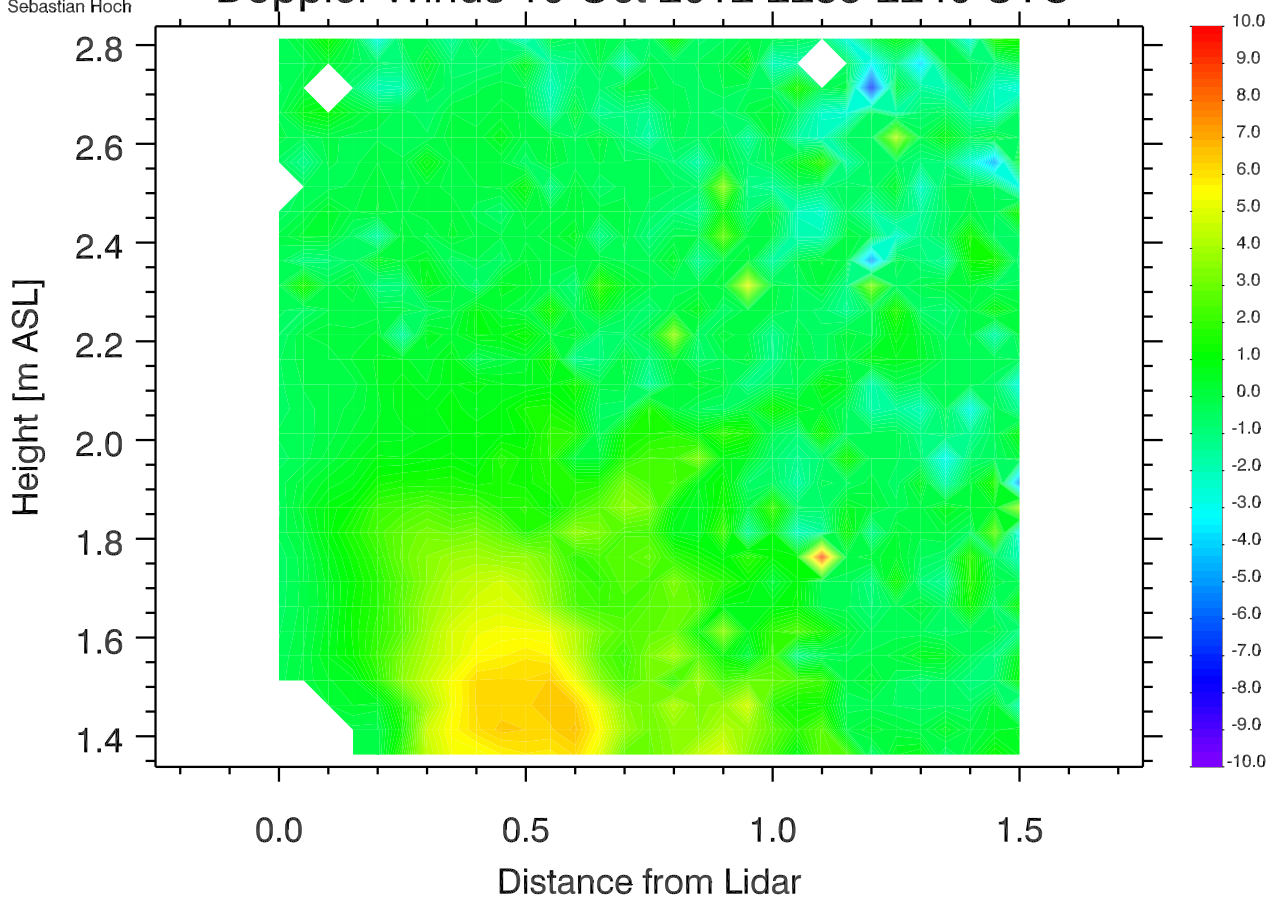


University of Utah LIDAR, MATERHORN
Elev. angle range: -0.-90.
Azimuth range: 4.-4.
Sebastian Hoch

Doppler Winds 10 Oct 2012 2235-2240 UTC

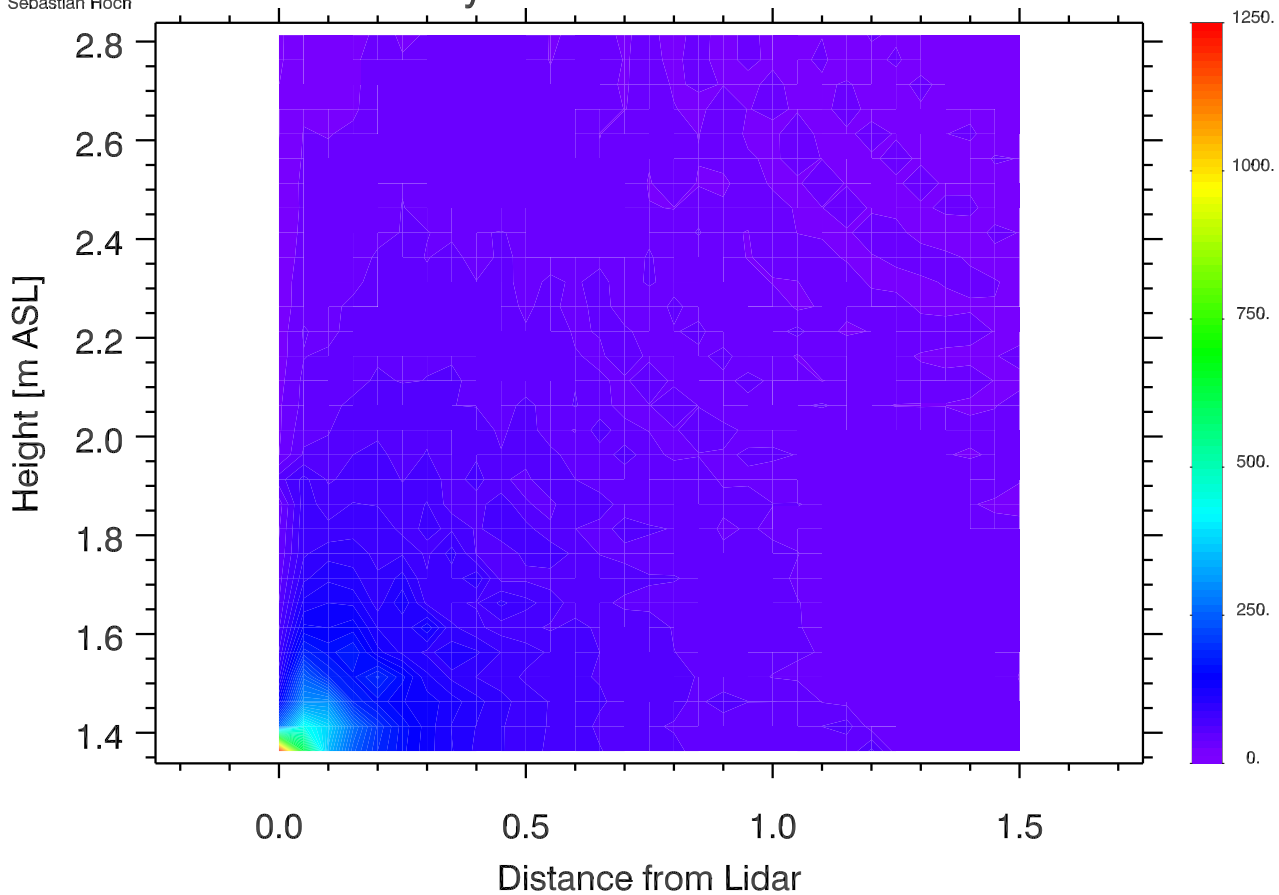
[m s⁻¹]



University of Utah LIDAR, MATERHORN
Elev. angle range: -0.-90.
Azimuth range: 4.-4.
Sebastian Hoch

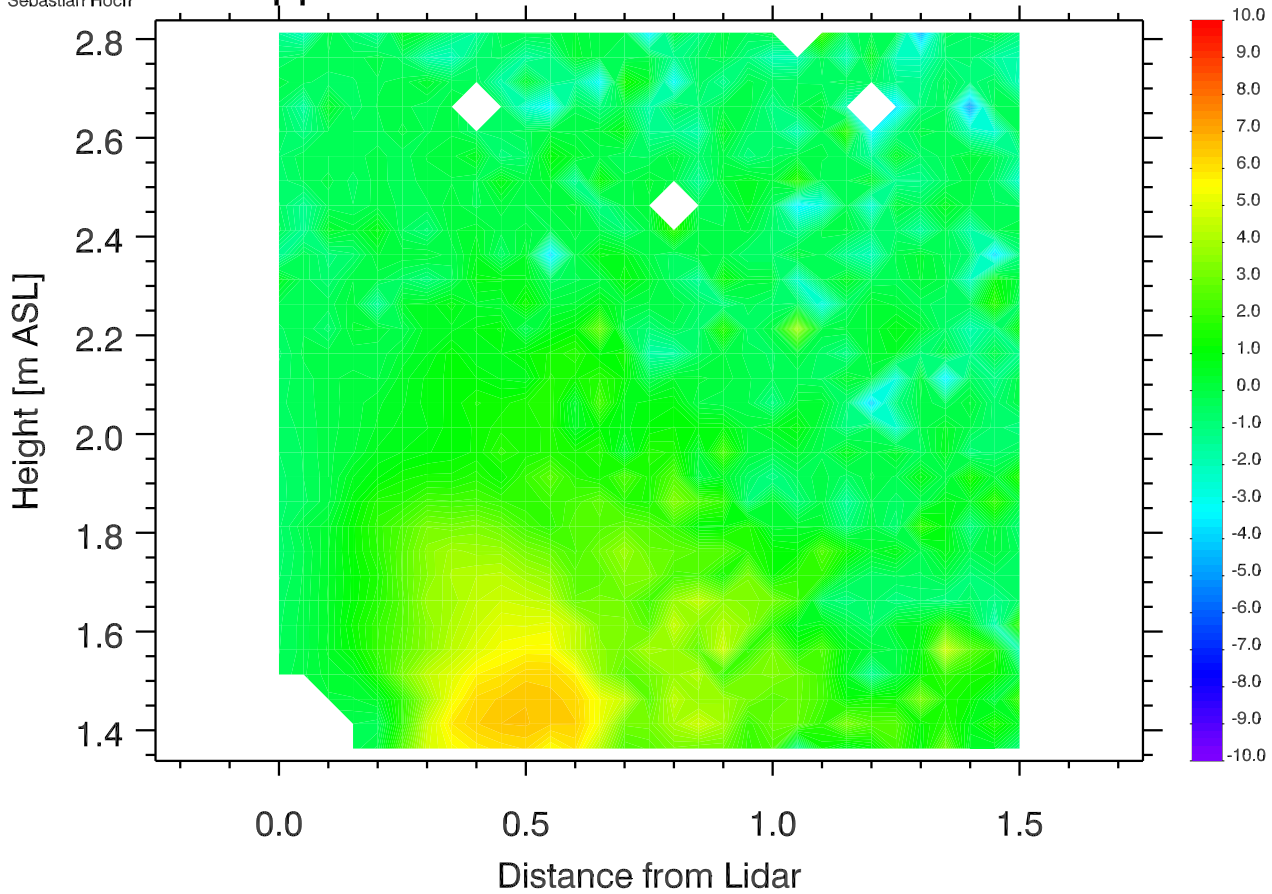
Data Density 10 Oct 2012 2235-2240 UTC

[-]



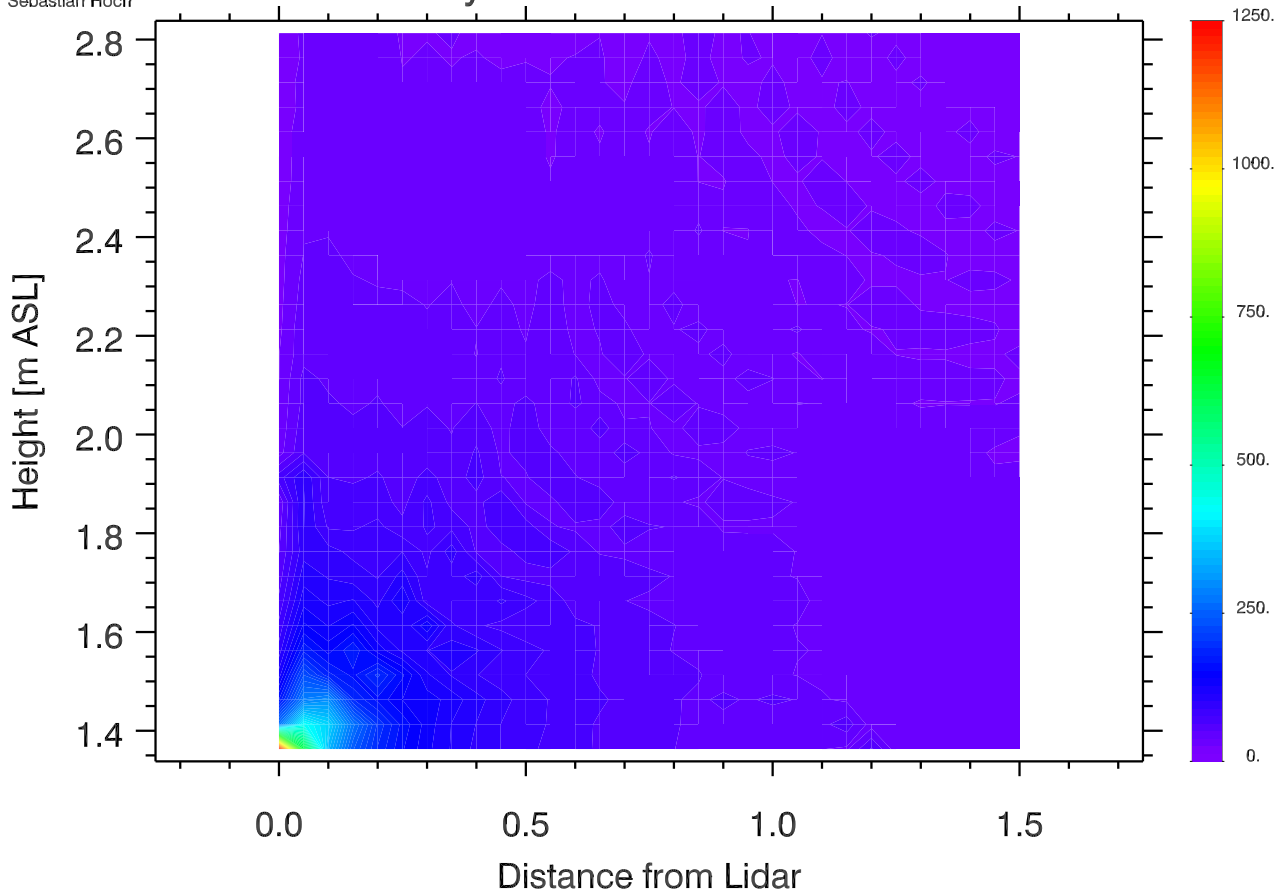
University of Utah LIDAR, MATERHORN
Elev. angle rage: -0.-90.
Azimuth rage: 4.-4.
Sebastian Hoch

Doppler Winds 10 Oct 2012 2240-2245 UTC [m s⁻¹]



University of Utah LIDAR, MATERHORN
Elev. angle rage: -0.-90.
Azimuth rage: 4.-4.
Sebastian Hoch

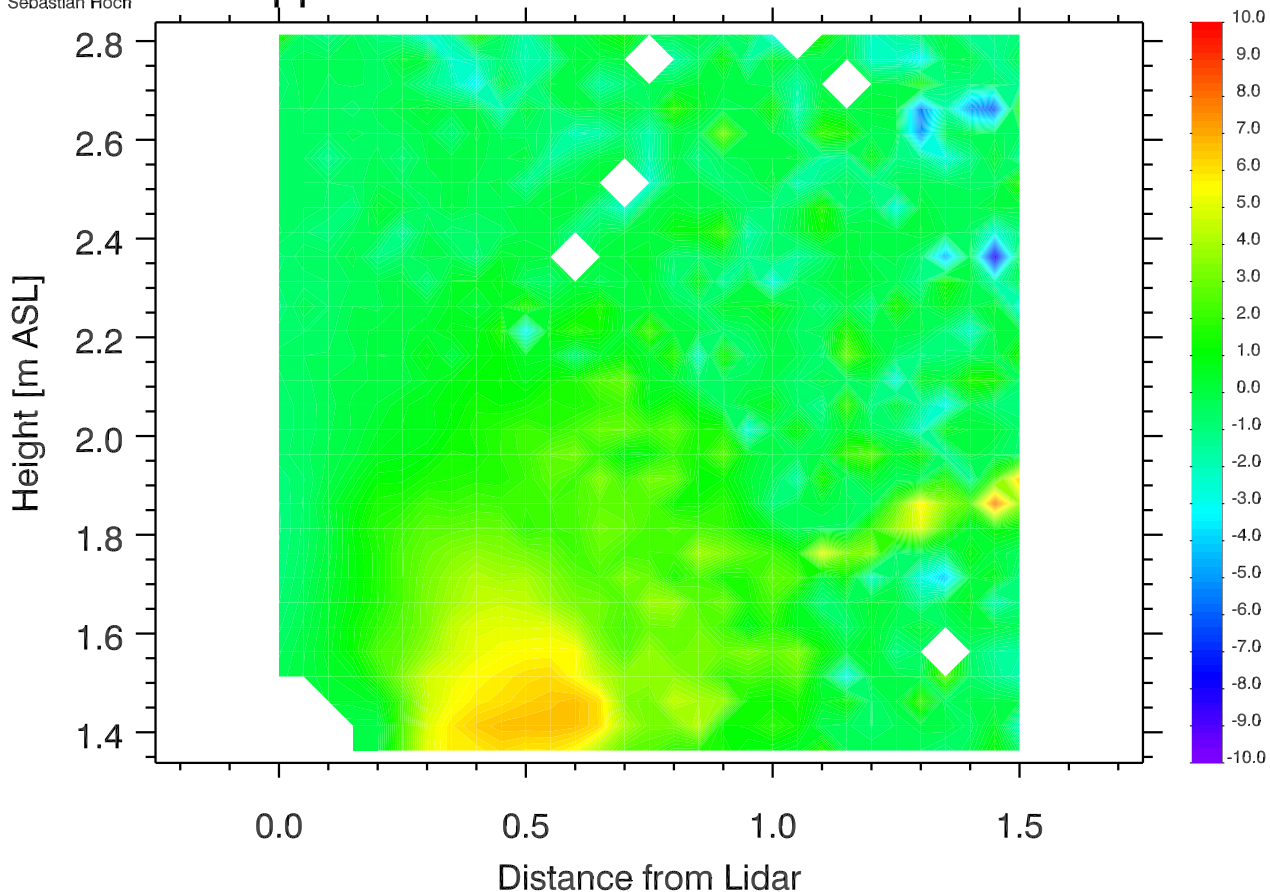
Data Density 10 Oct 2012 2240-2245 UTC [-]



University of Utah LIDAR, MATERHORN
Elev. angle rage: -0.-90.
Azimuth rage: 0.-4.
Sebastian Hoch

Doppler Winds 10 Oct 2012 2245-2250 UTC

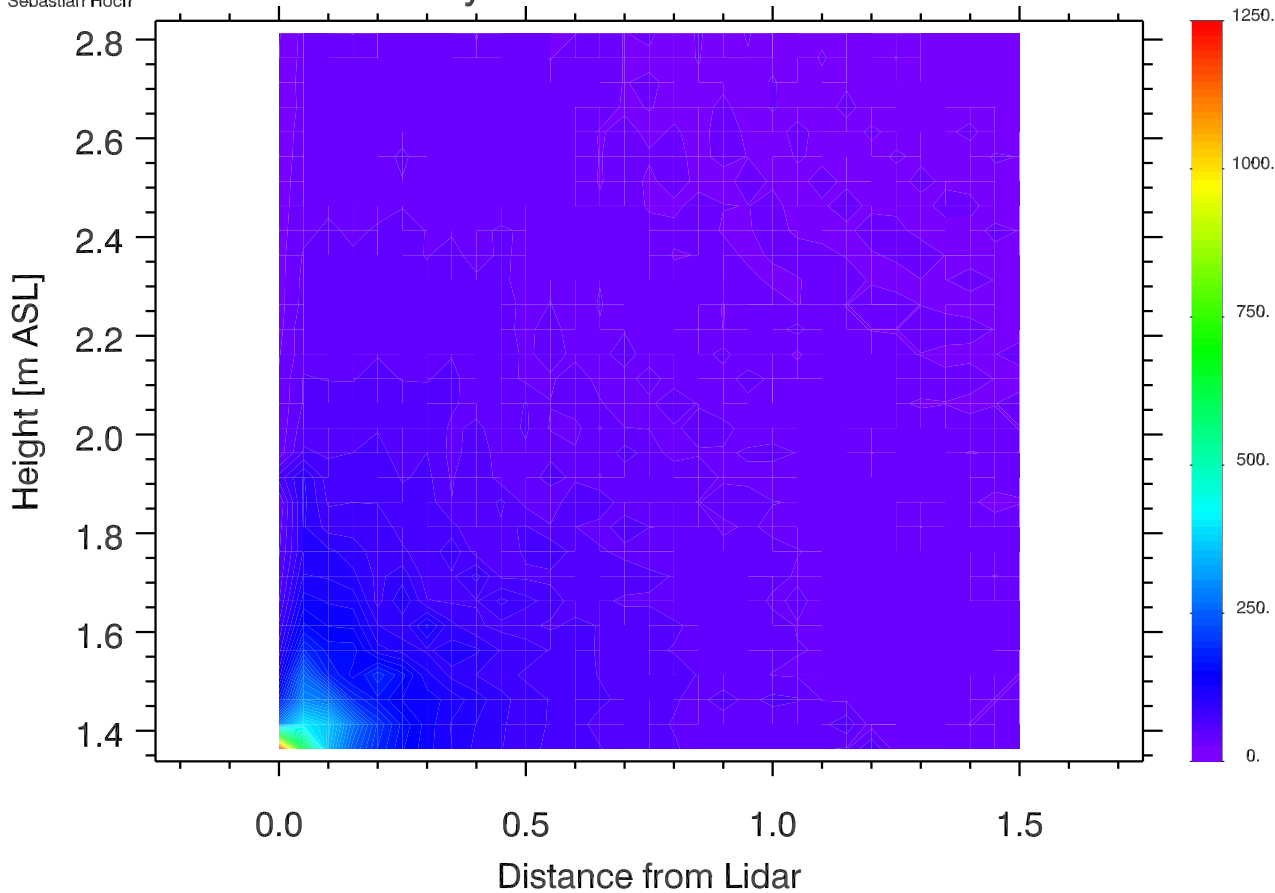
[m s⁻¹]



University of Utah LIDAR, MATERHORN
Elev. angle rage: -0.-90.
Azimuth rage: 0.-4.
Sebastian Hoch

Data Density 10 Oct 2012 2245-2250 UTC

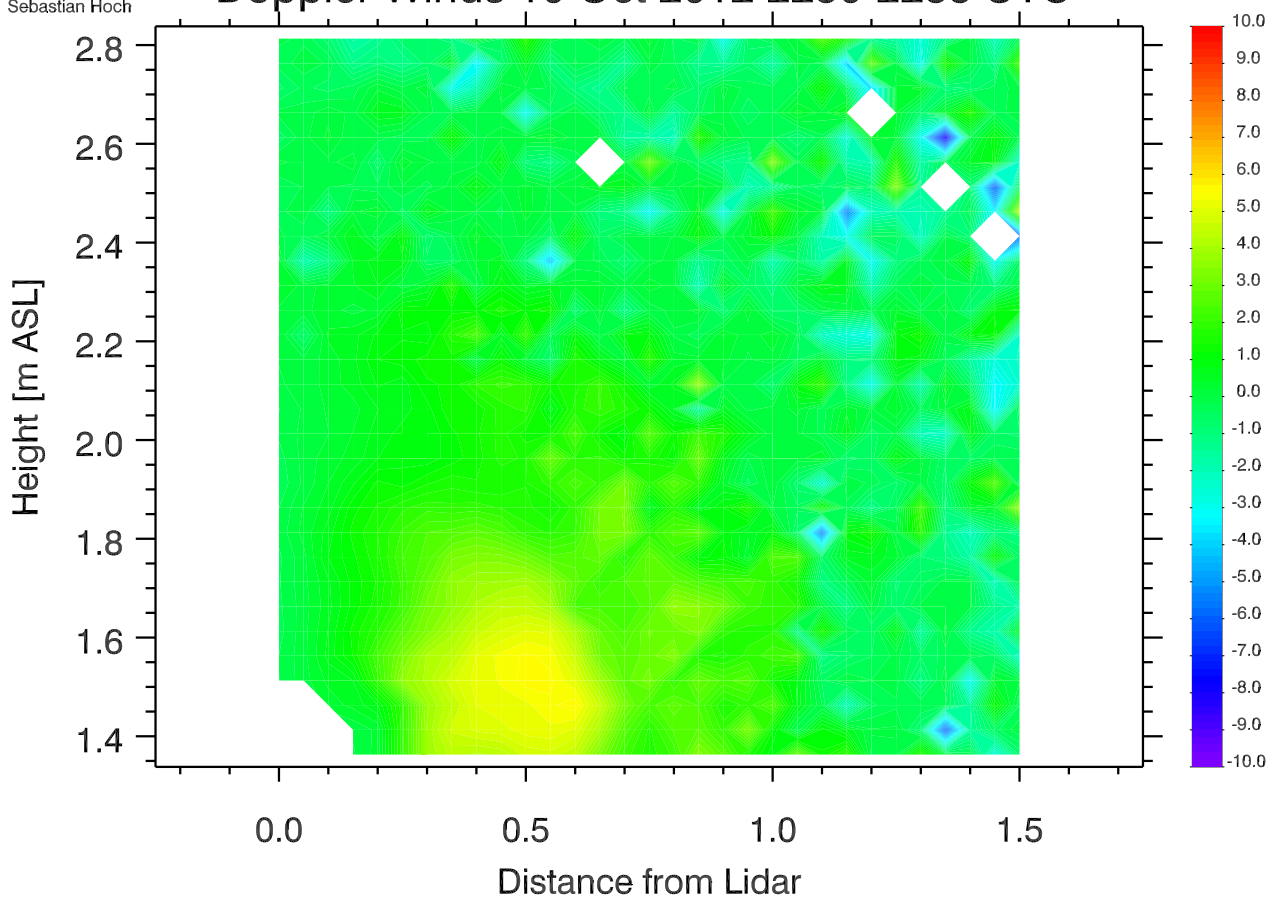
[-]



University of Utah LIDAR, MATERHORN
Elev. angle rage: -0.-90.
Azimuth rage: 4.-4.
Sebastian Hoch

Doppler Winds 10 Oct 2012 2250-2255 UTC

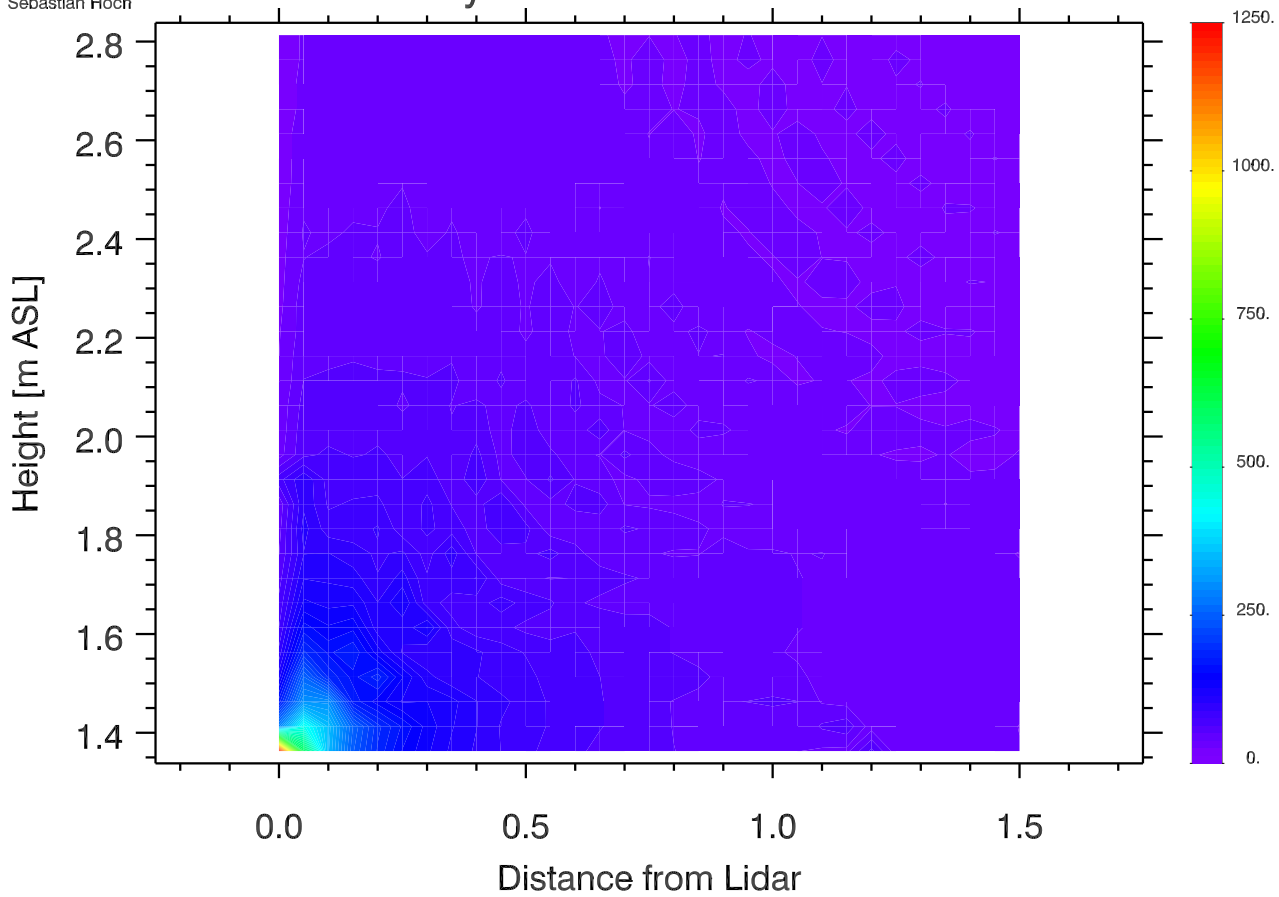
[m s⁻¹]



University of Utah LIDAR, MATERHORN
Elev. angle rage: -0.-90.
Azimuth rage: 4.-4.
Sebastian Hoch

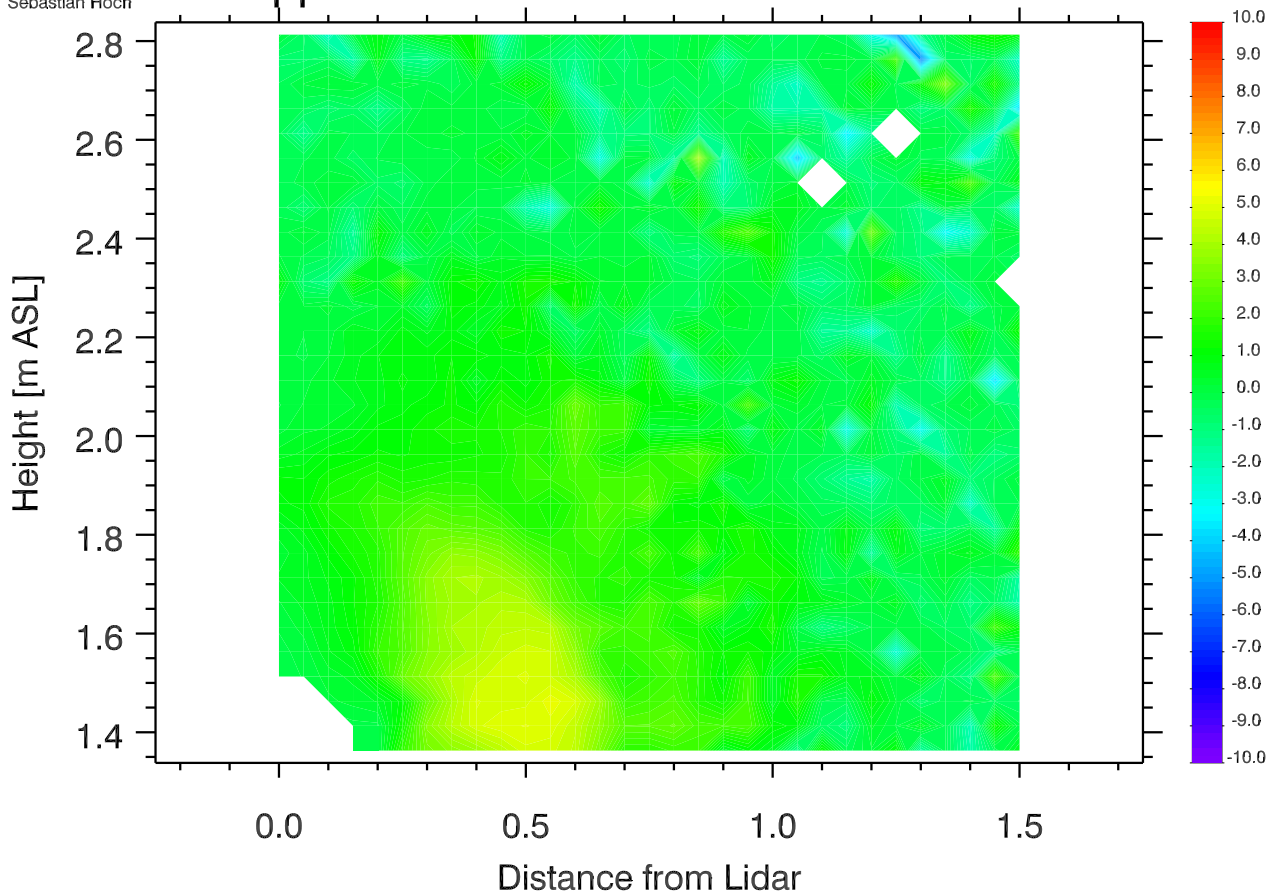
Data Density 10 Oct 2012 2250-2255 UTC

[-]



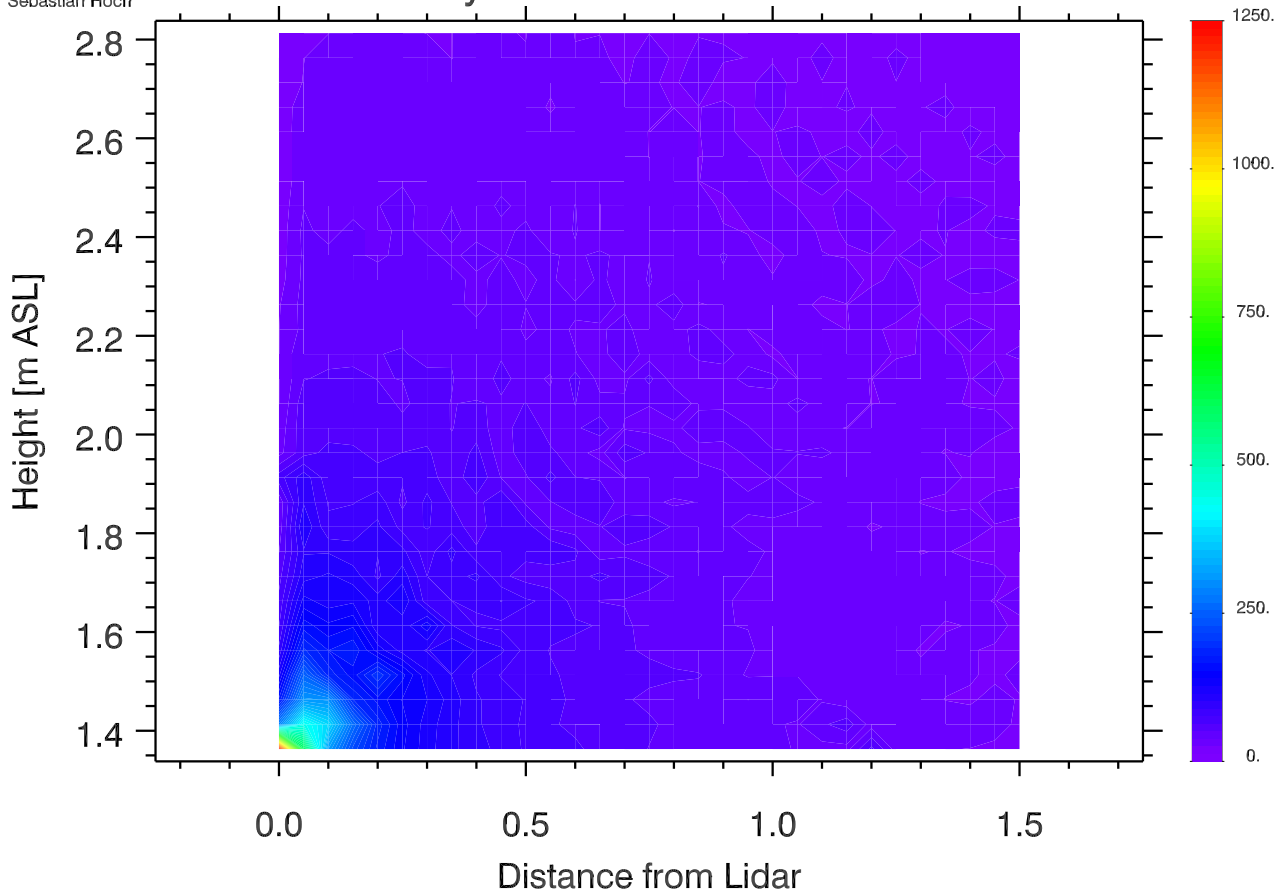
University of Utah LIDAR, MATERHORN
Elev. angle rage: -0.-90.
Azimuth rage: 4.-4.
Sebastian Hoch

Doppler Winds 10 Oct 2012 2255-2300 UTC [m s⁻¹]



University of Utah LIDAR, MATERHORN
Elev. angle rage: -0.-90.
Azimuth rage: 4.-4.
Sebastian Hoch

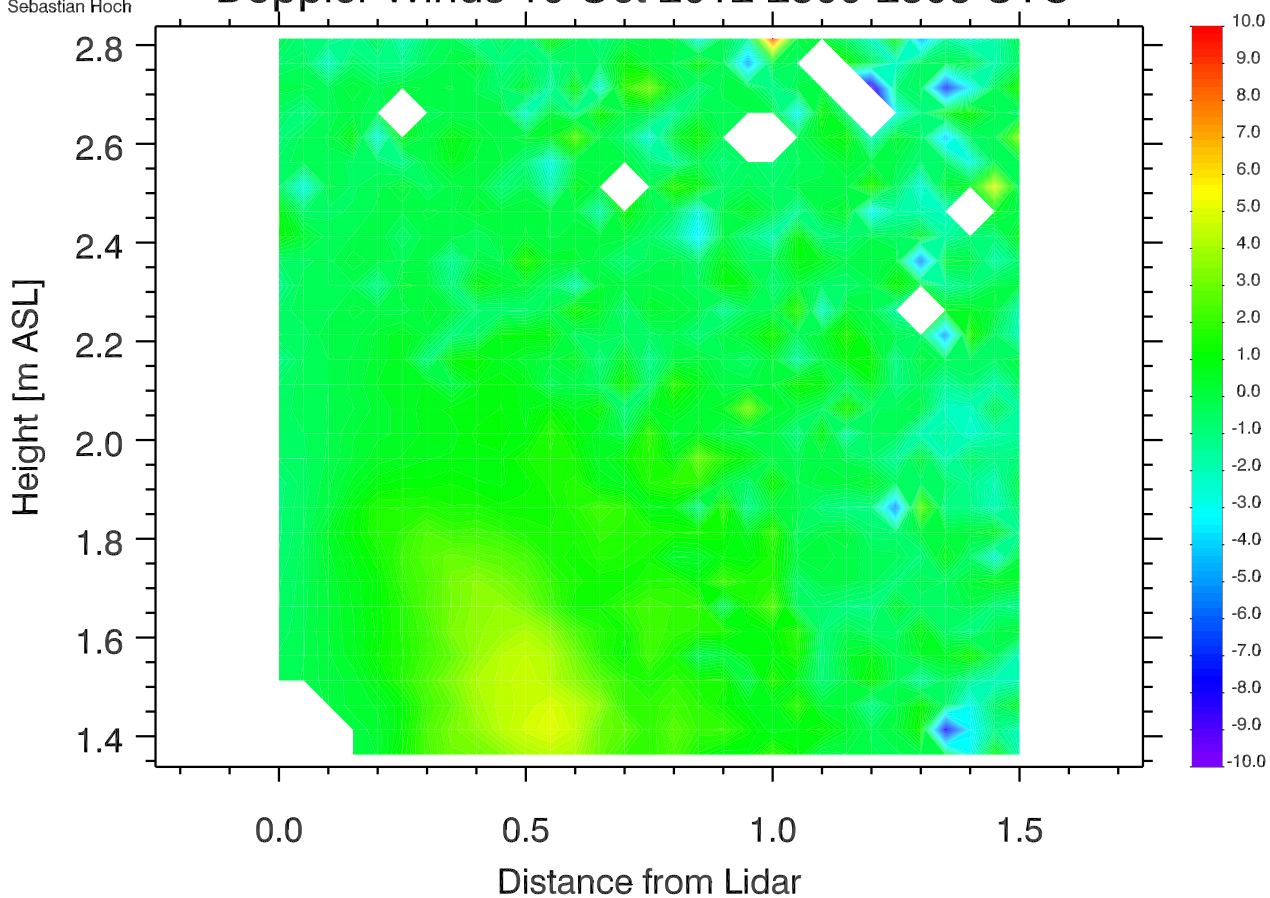
Data Density 10 Oct 2012 2255-2300 UTC [-]



University of Utah LIDAR, MATERHORN
Elev. angle rage: -0.-90.
Azimuth rage: 4.-4.
Sebastian Hoch

Doppler Winds 10 Oct 2012 2300-2305 UTC

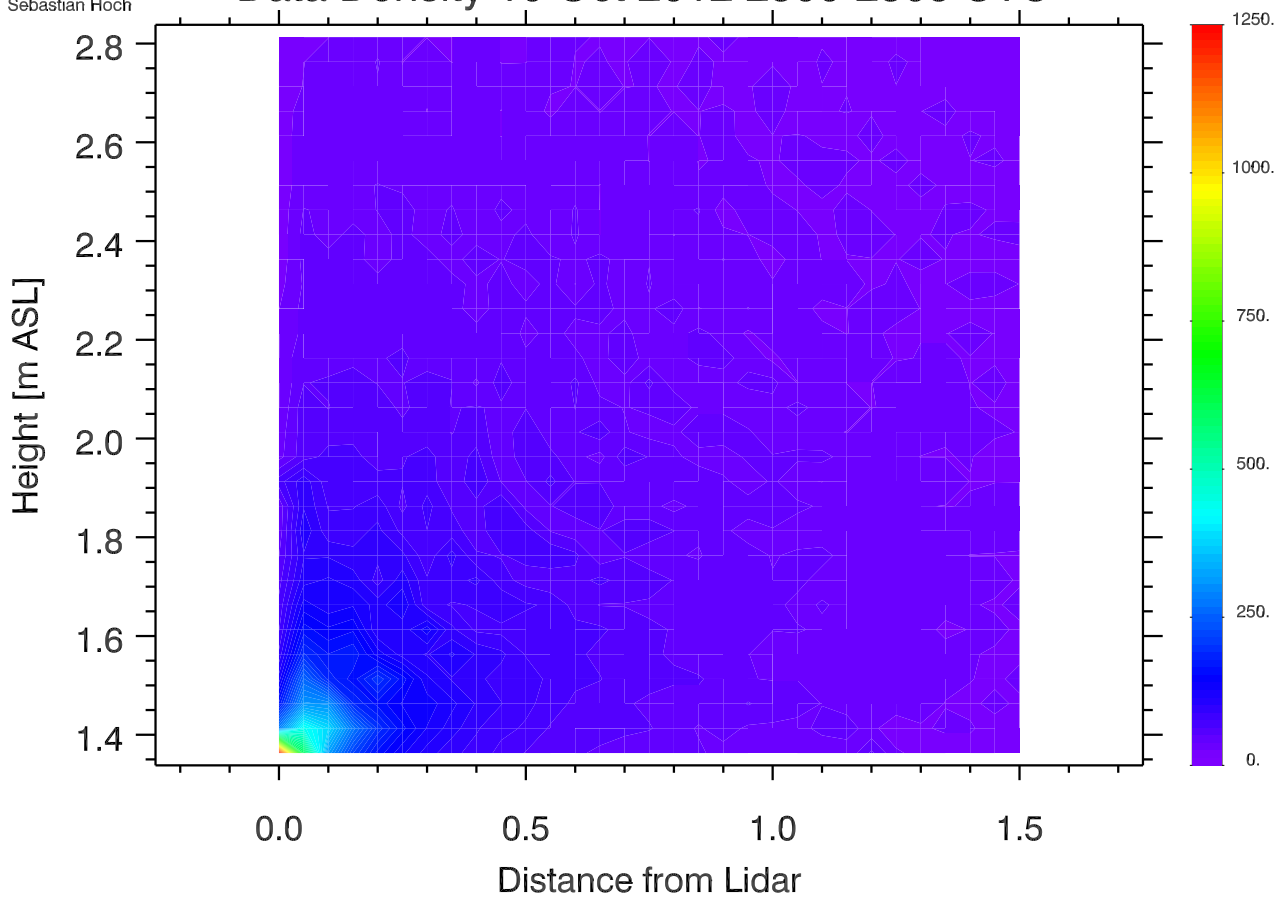
[m s⁻¹]



University of Utah LIDAR, MATERHORN
Elev. angle rage: -0.-90.
Azimuth rage: 4.-4.
Sebastian Hoch

Data Density 10 Oct 2012 2300-2305 UTC

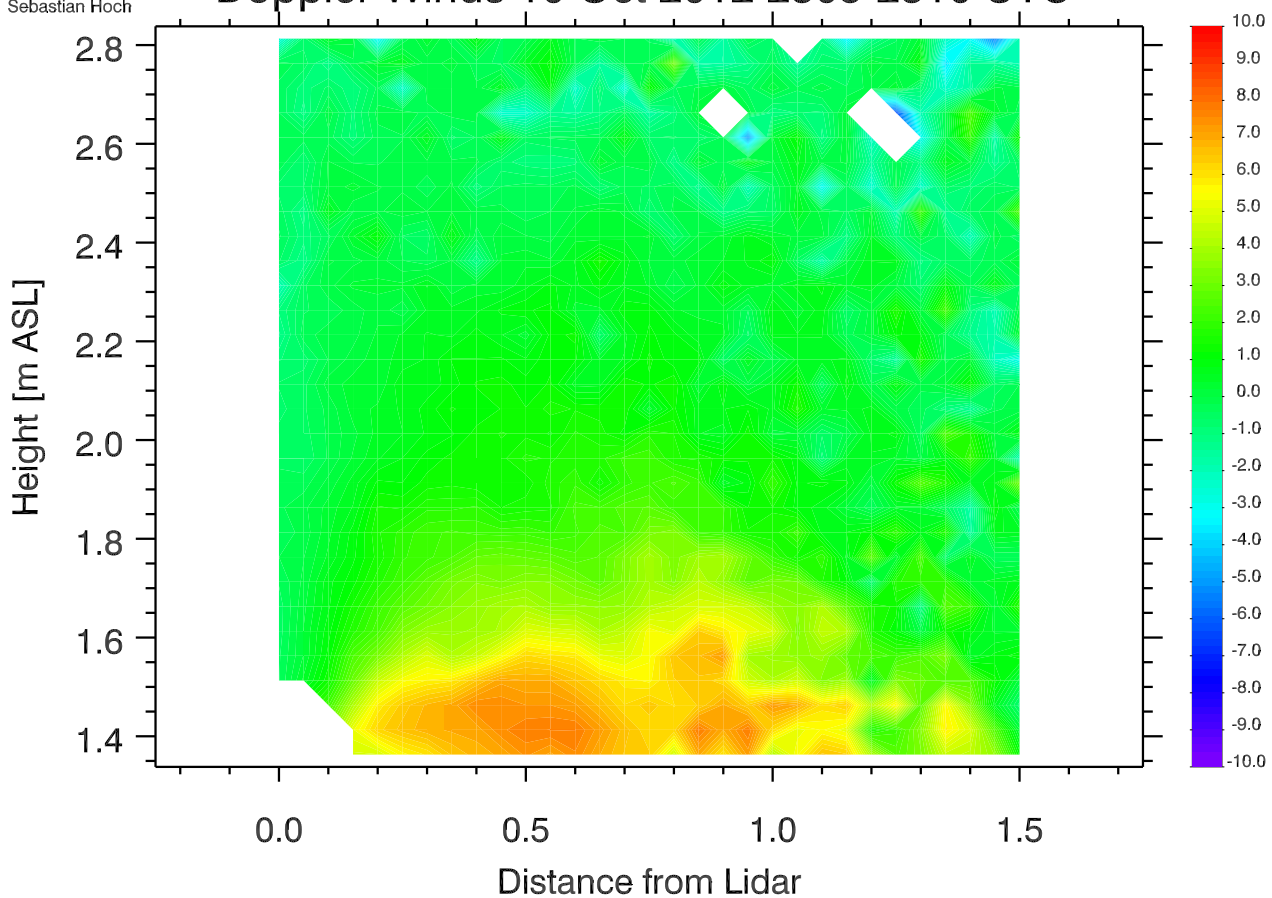
[-]



University of Utah LIDAR, MATERHORN
Elev. angle rage: -0.-90.
Azimuth rage: 4.-4.
Sebastian Hoch

Doppler Winds 10 Oct 2012 2305-2310 UTC

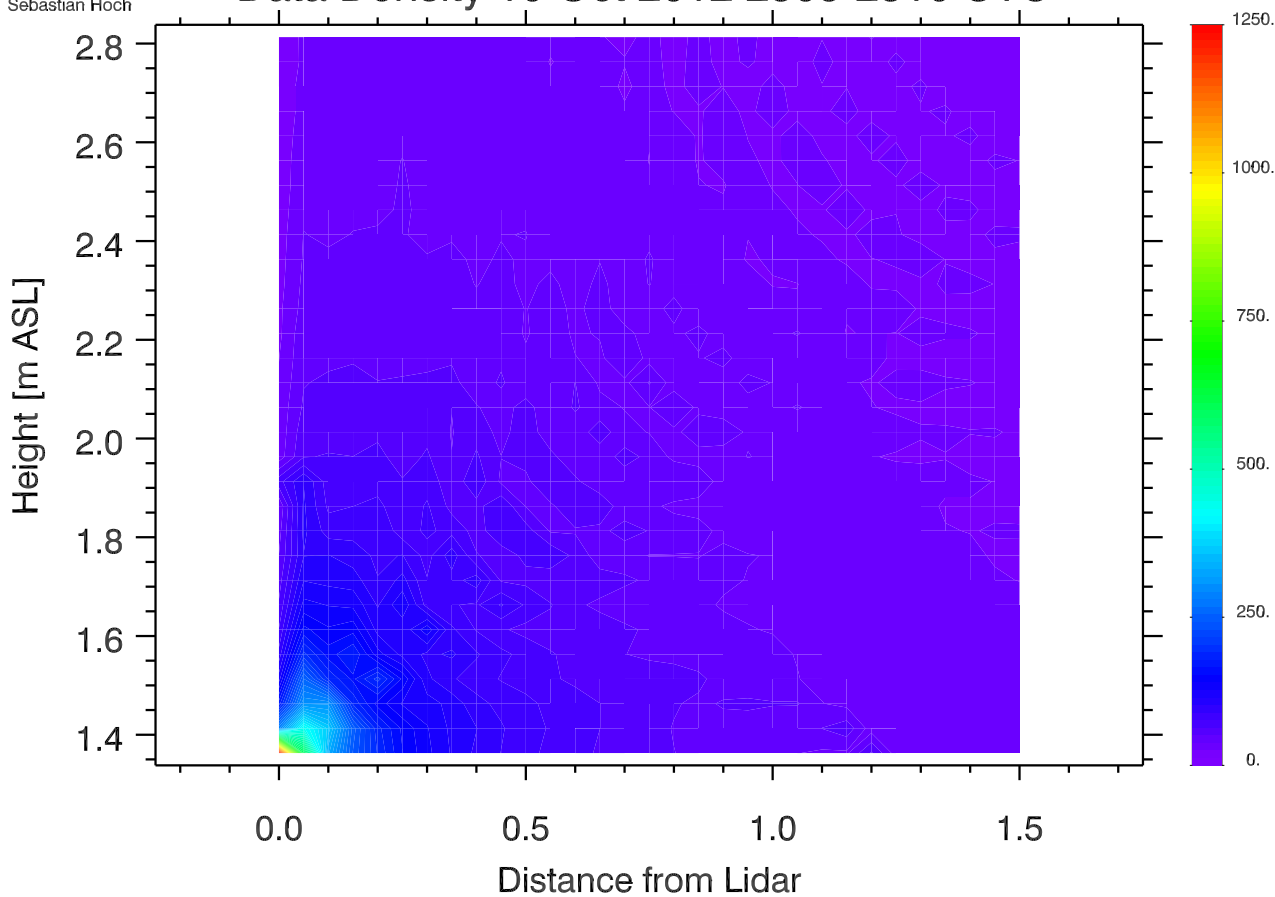
[m s⁻¹]



University of Utah LIDAR, MATERHORN
Elev. angle rage: -0.-90.
Azimuth rage: 4.-4.
Sebastian Hoch

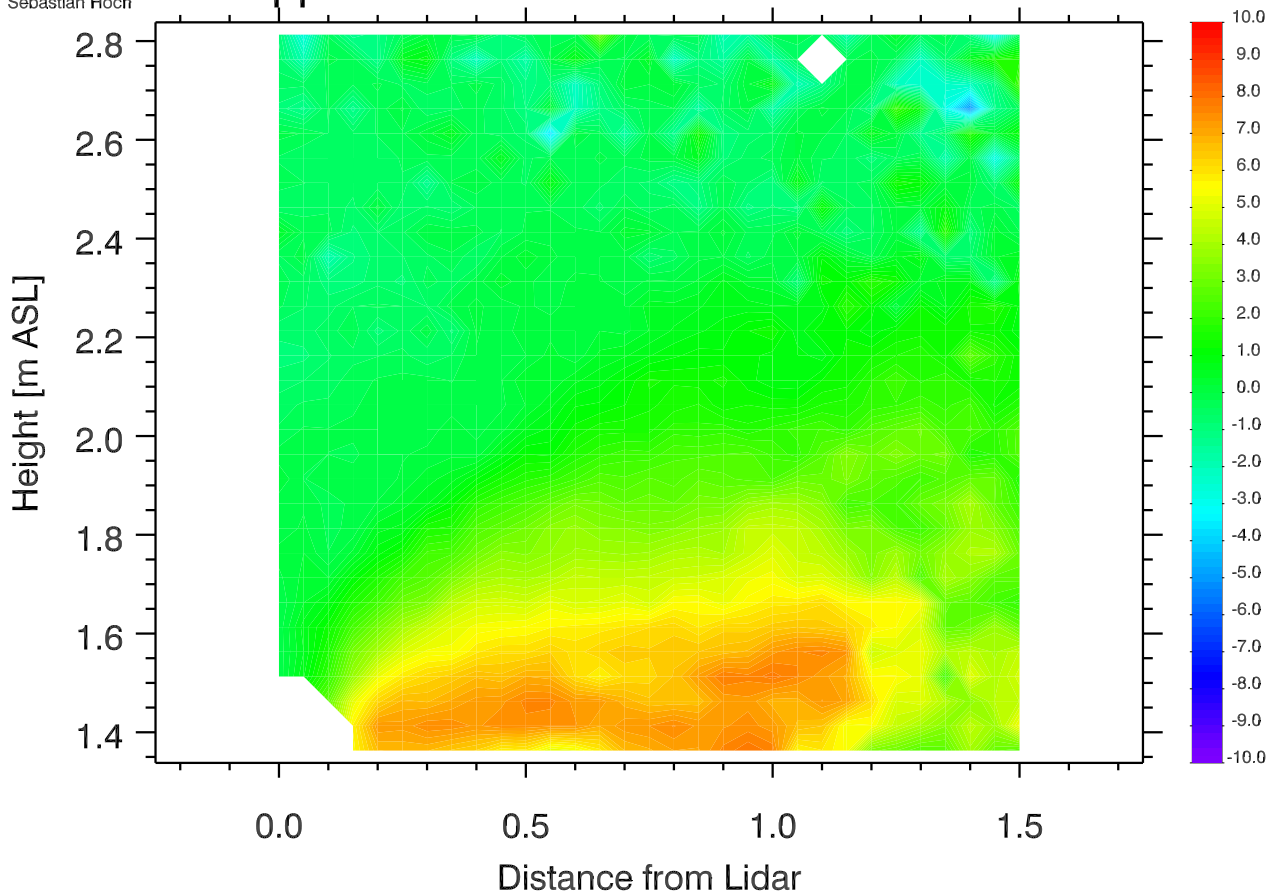
Data Density 10 Oct 2012 2305-2310 UTC

[-]



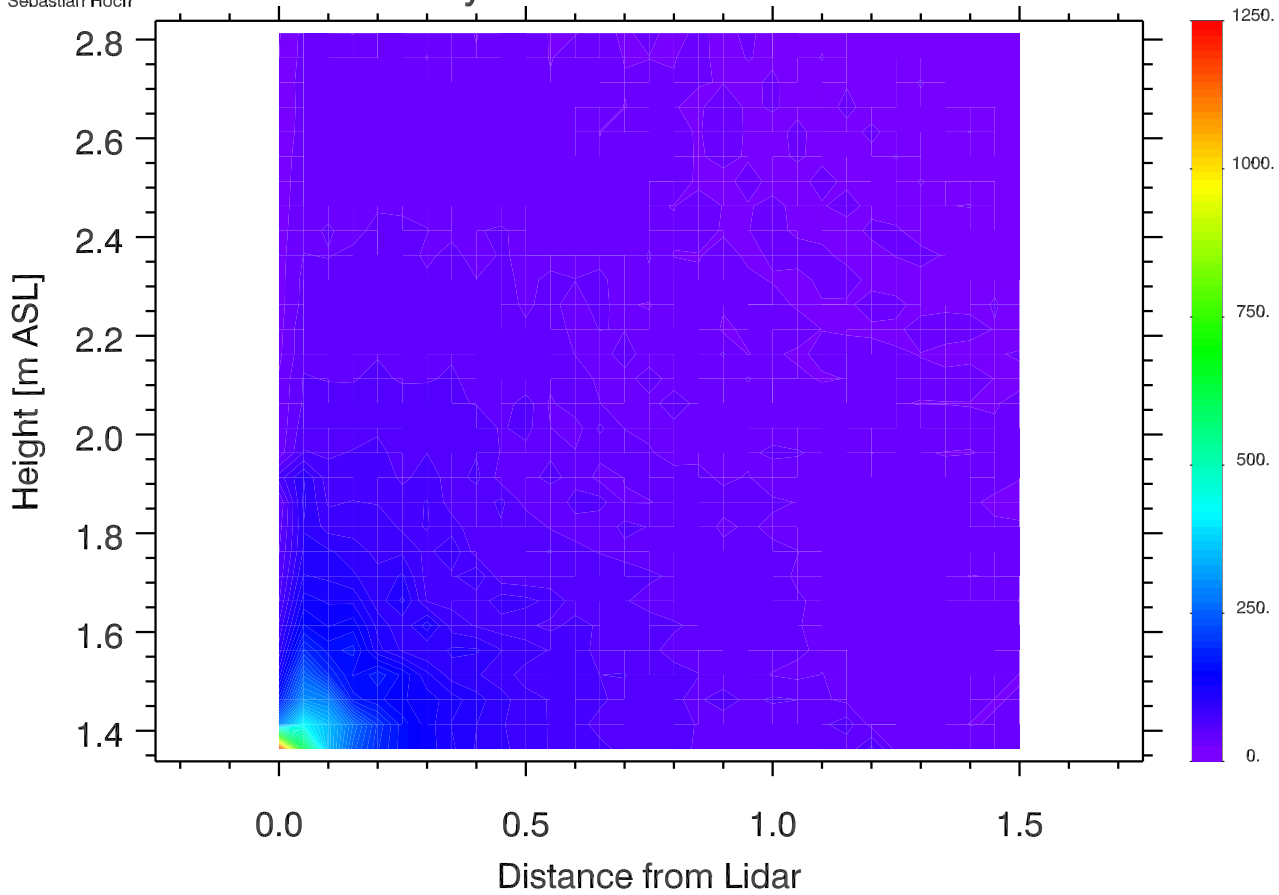
University of Utah LIDAR, MATERHORN
Elev. angle rage: -0.-90.
Azimuth rage: 4.-4.
Sebastian Hoch

Doppler Winds 10 Oct 2012 2310-2315 UTC [m s⁻¹]



University of Utah LIDAR, MATERHORN
Elev. angle rage: -0.-90.
Azimuth rage: 4.-4.
Sebastian Hoch

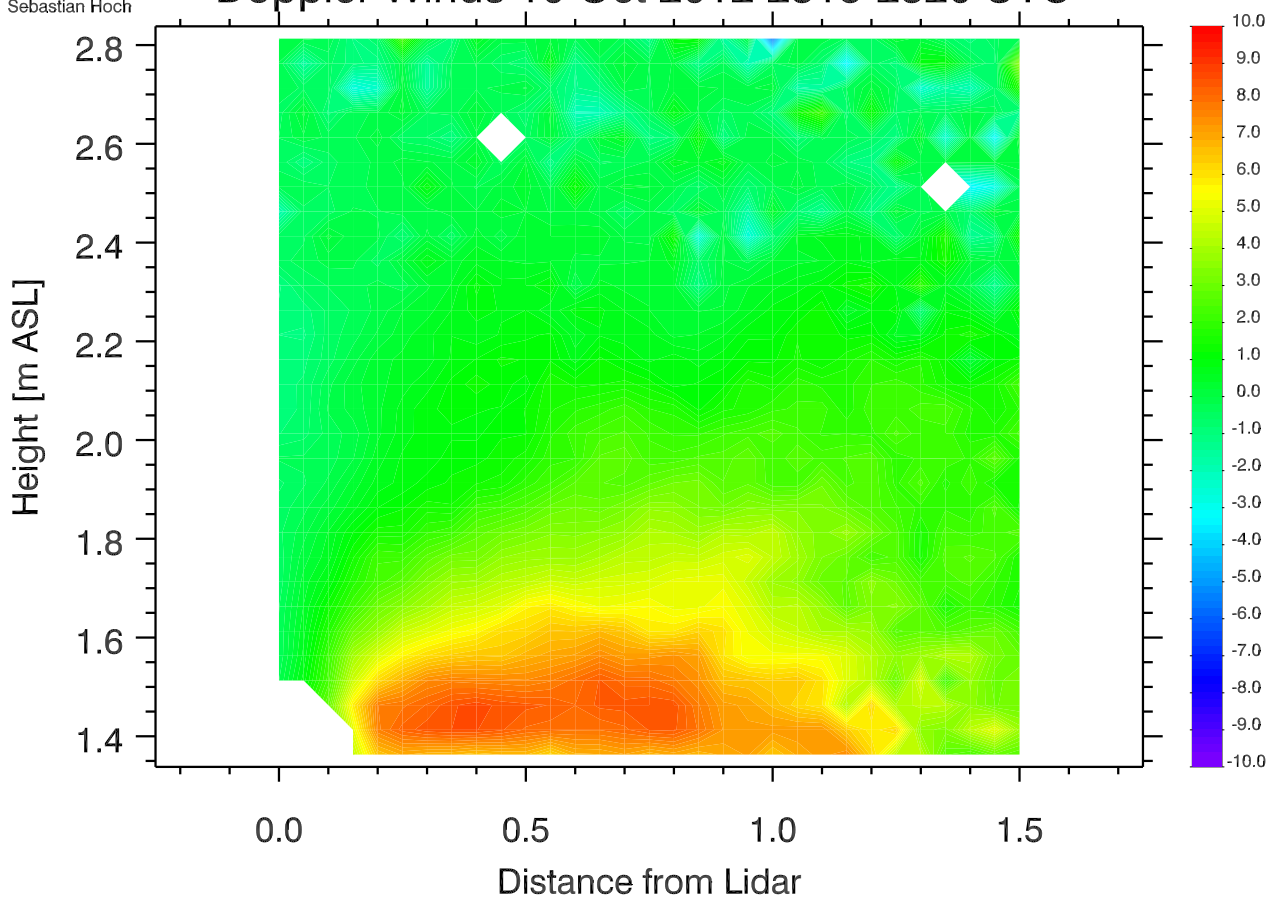
Data Density 10 Oct 2012 2310-2315 UTC [-]



University of Utah LIDAR, MATERHORN
Elev. angle rage: -0.-90.
Azimuth rage: 4.-4.
Sebastian Hoch

Doppler Winds 10 Oct 2012 2315-2320 UTC

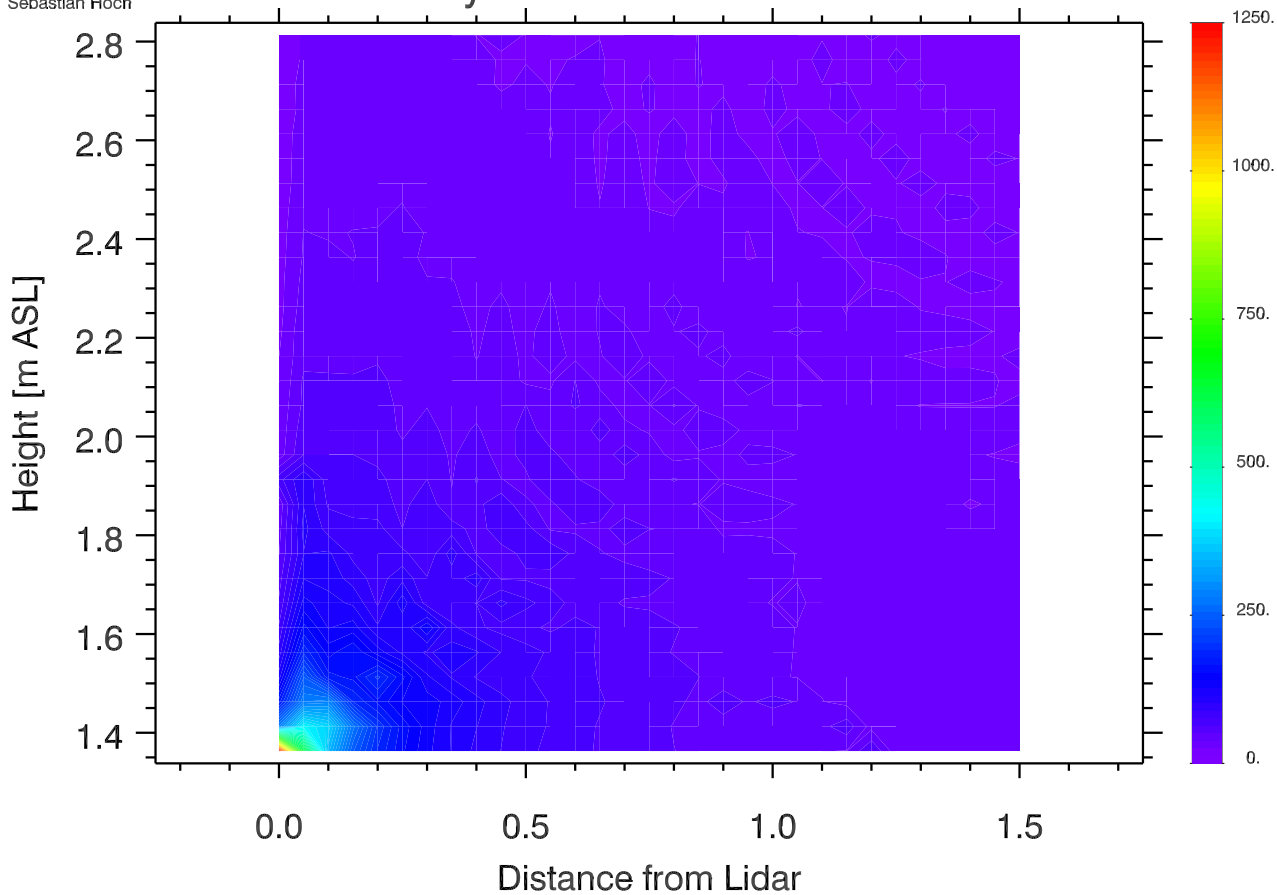
[m s⁻¹]



University of Utah LIDAR, MATERHORN
Elev. angle rage: -0.-90.
Azimuth rage: 4.-4.
Sebastian Hoch

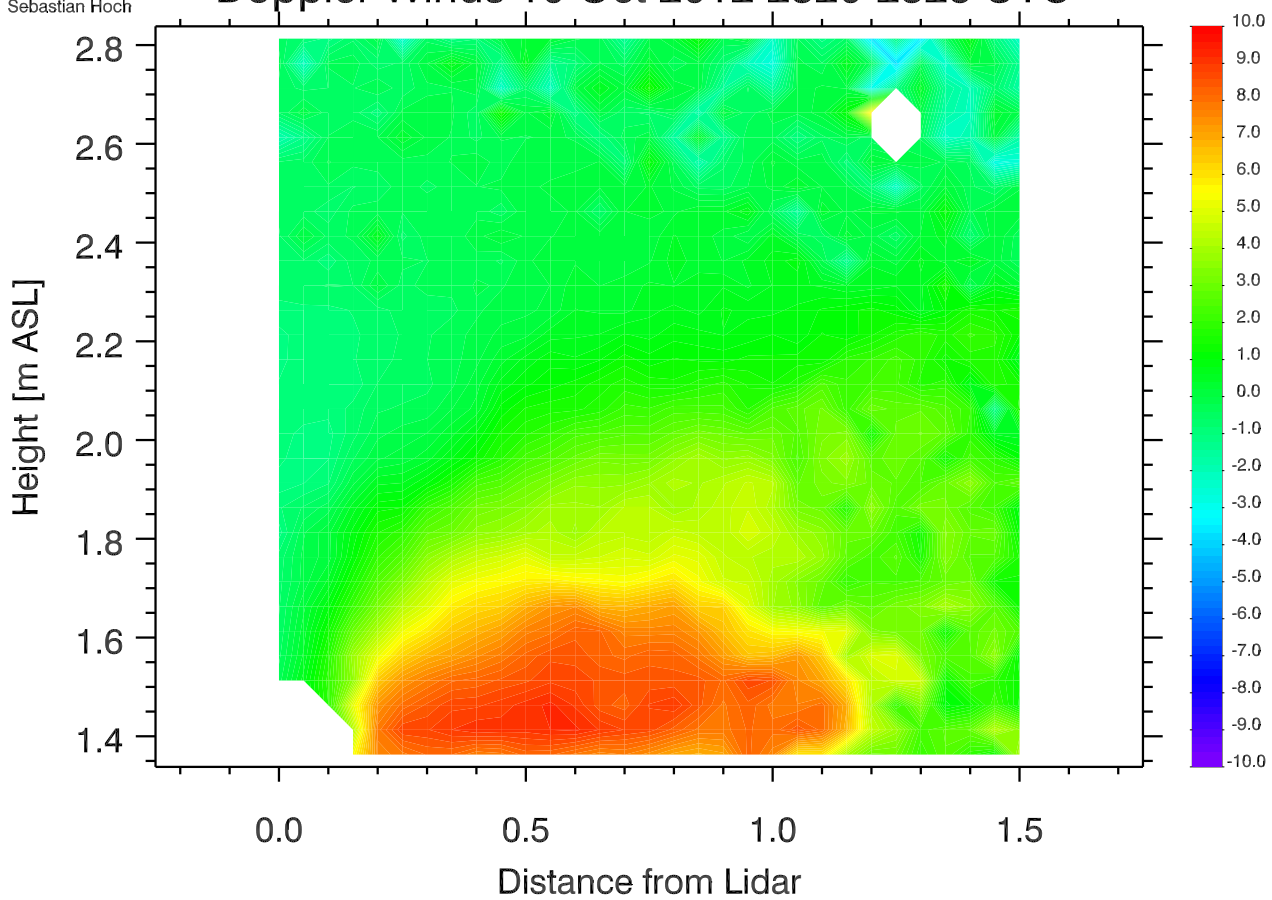
Data Density 10 Oct 2012 2315-2320 UTC

[-]



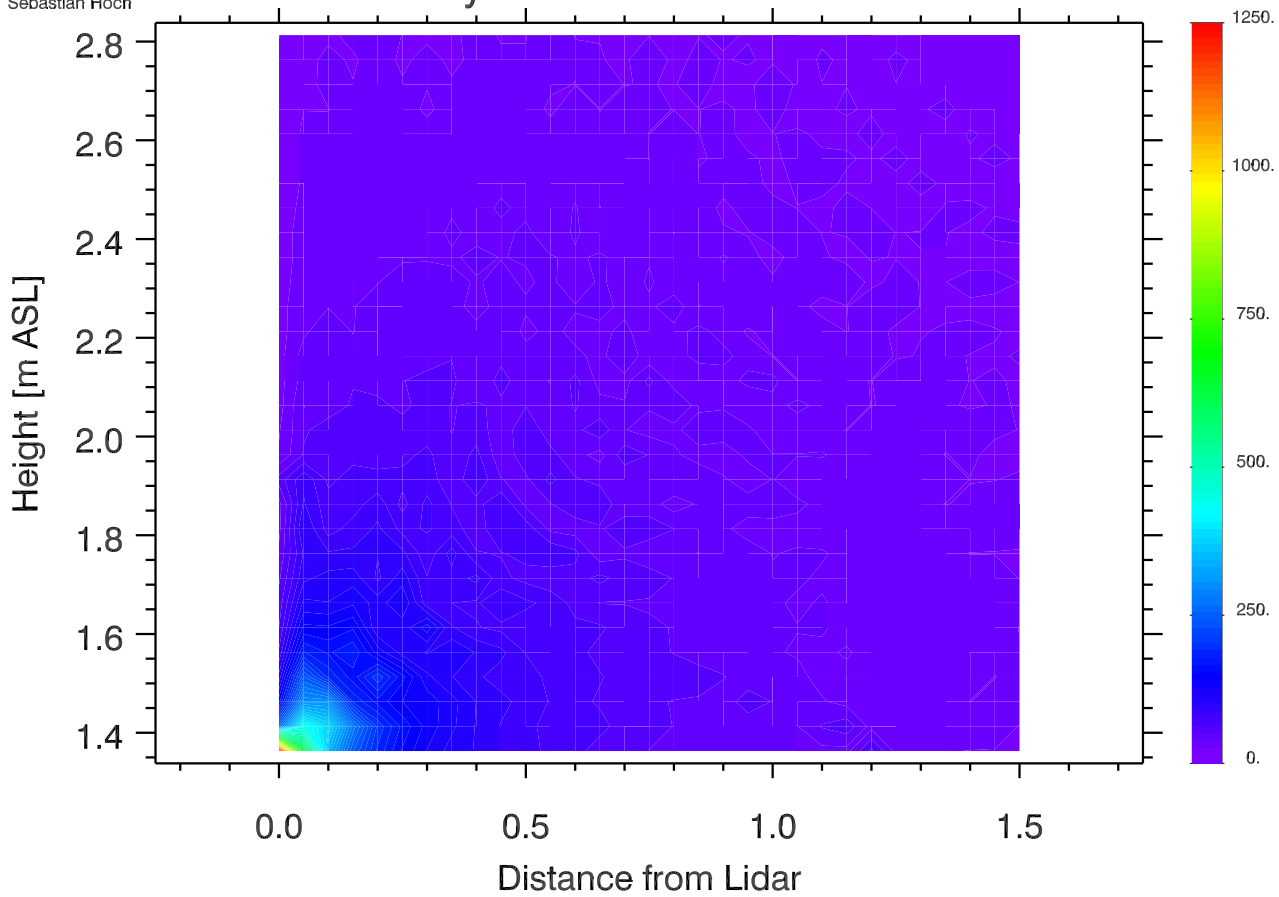
Doppler Winds 10 Oct 2012 2320-2325 UTC

[m s⁻¹]



Data Density 10 Oct 2012 2320-2325 UTC

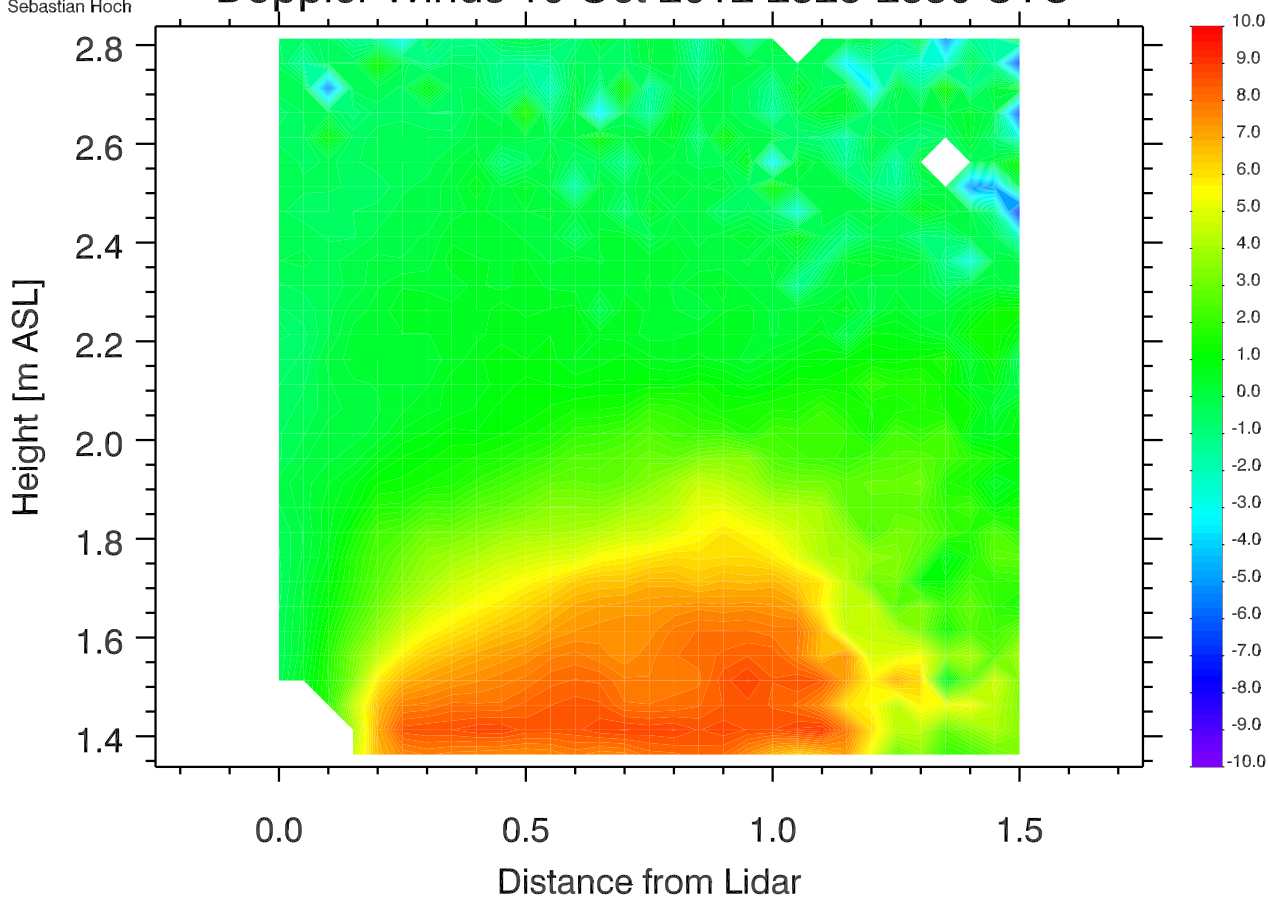
[-]



University of Utah LIDAR, MATERHORN
Elev. angle range: -0.-90.
Azimuth range: 4.-4.
Sebastian Hoch

Doppler Winds 10 Oct 2012 2325-2330 UTC

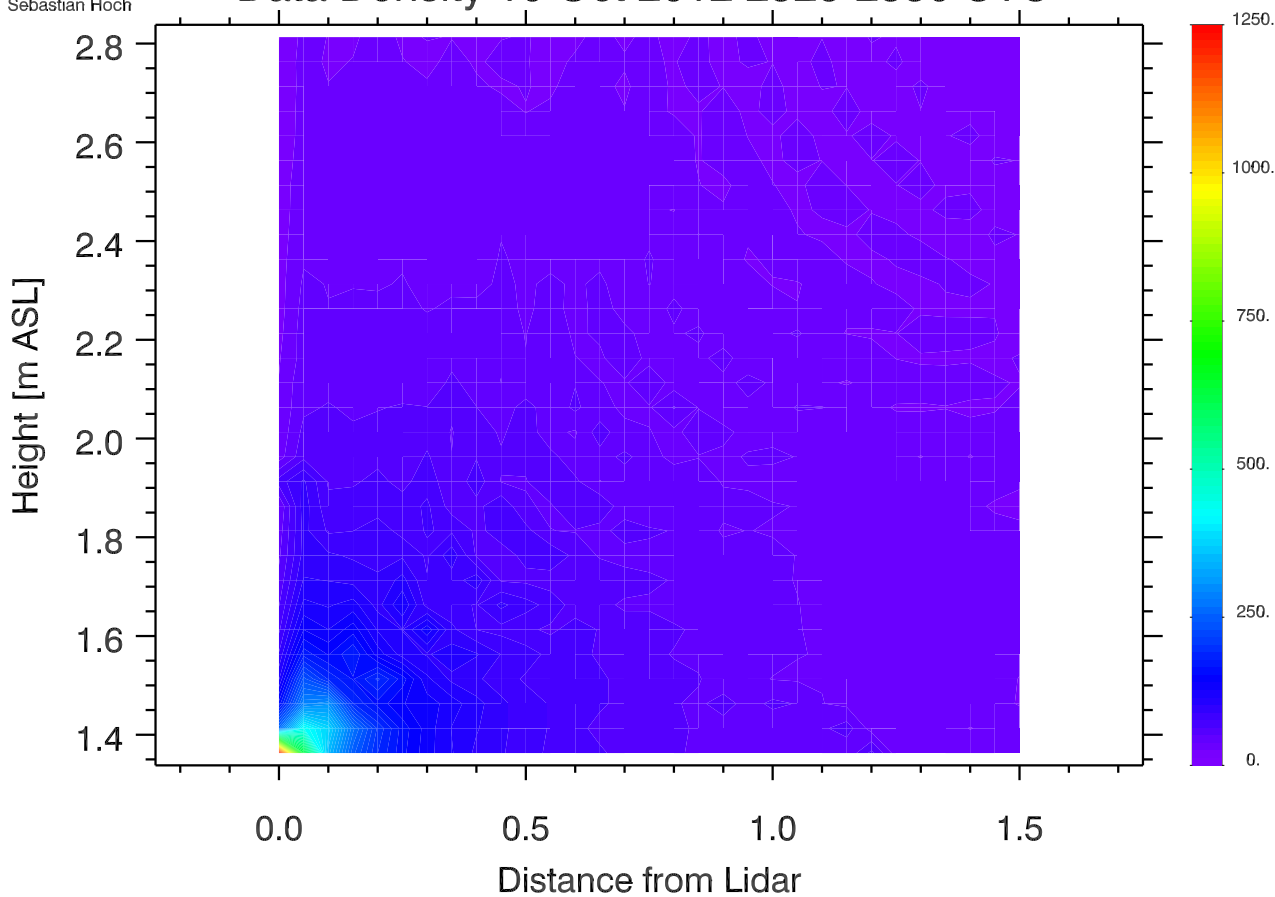
[m s⁻¹]



University of Utah LIDAR, MATERHORN
Elev. angle range: -0.-90.
Azimuth range: 4.-4.
Sebastian Hoch

Data Density 10 Oct 2012 2325-2330 UTC

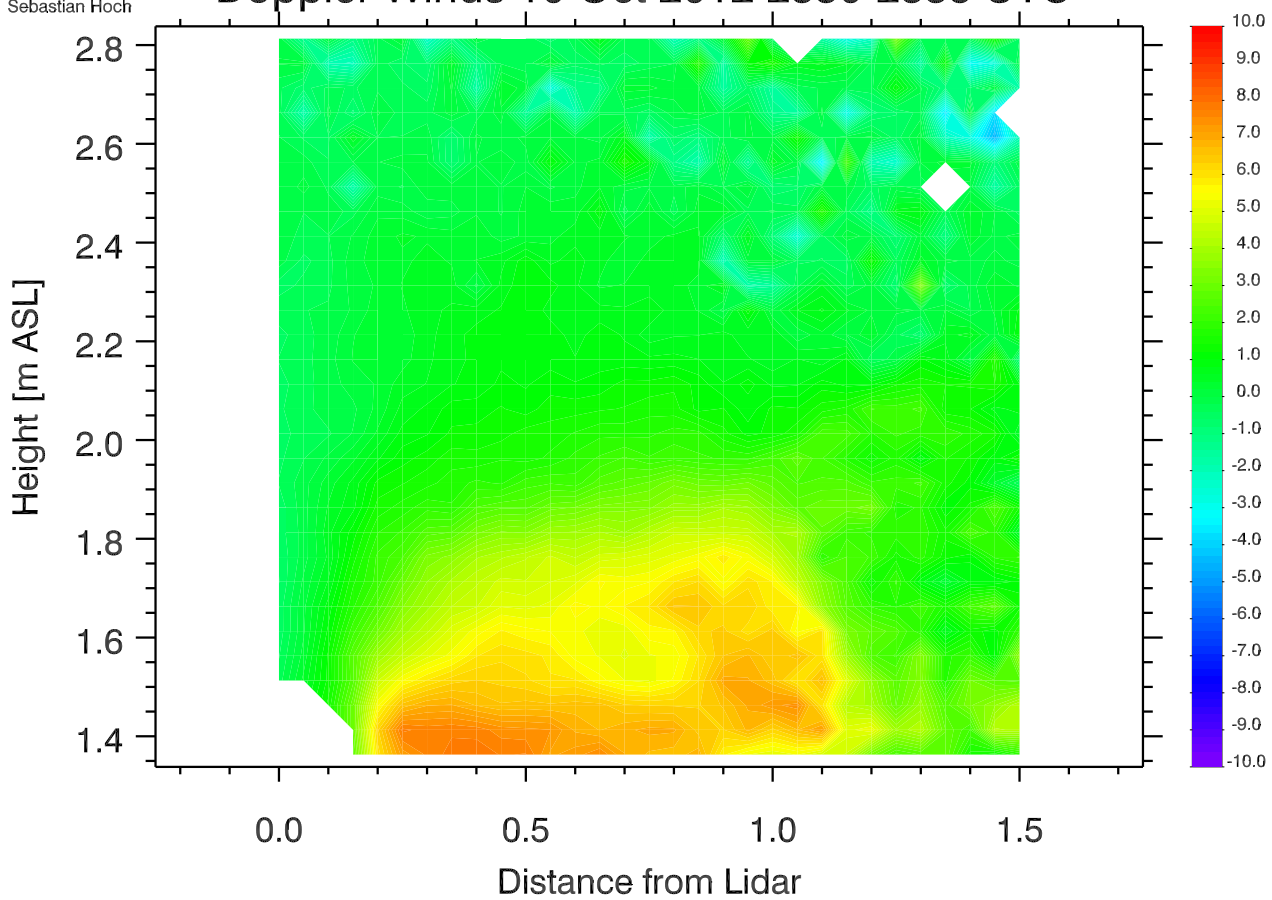
[-]



University of Utah LIDAR, MATERHORN
Elev. angle rage: -0.-90.
Azimuth rage: 4.-4.
Sebastian Hoch

Doppler Winds 10 Oct 2012 2330-2335 UTC

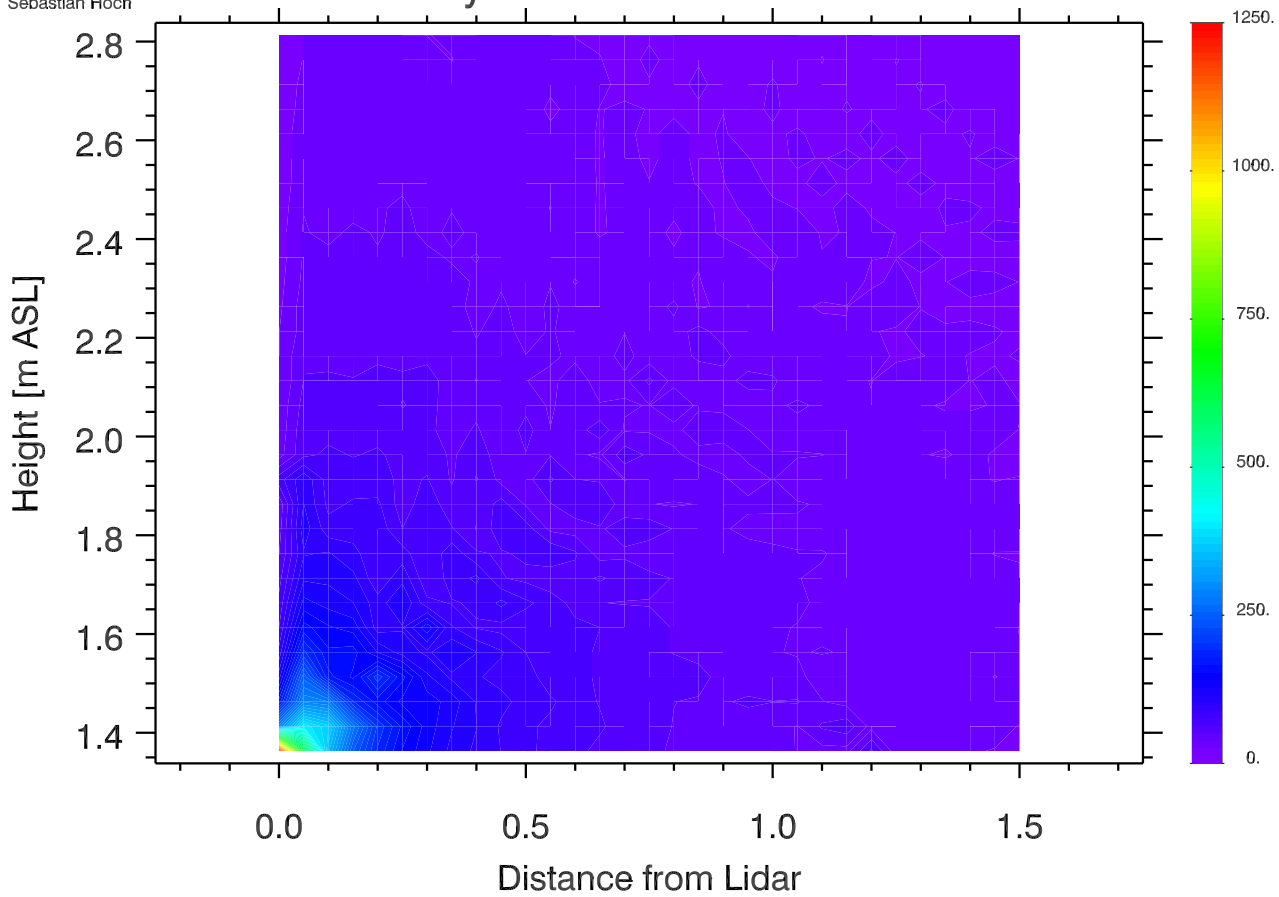
[m s⁻¹]



University of Utah LIDAR, MATERHORN
Elev. angle rage: -0.-90.
Azimuth rage: 4.-4.
Sebastian Hoch

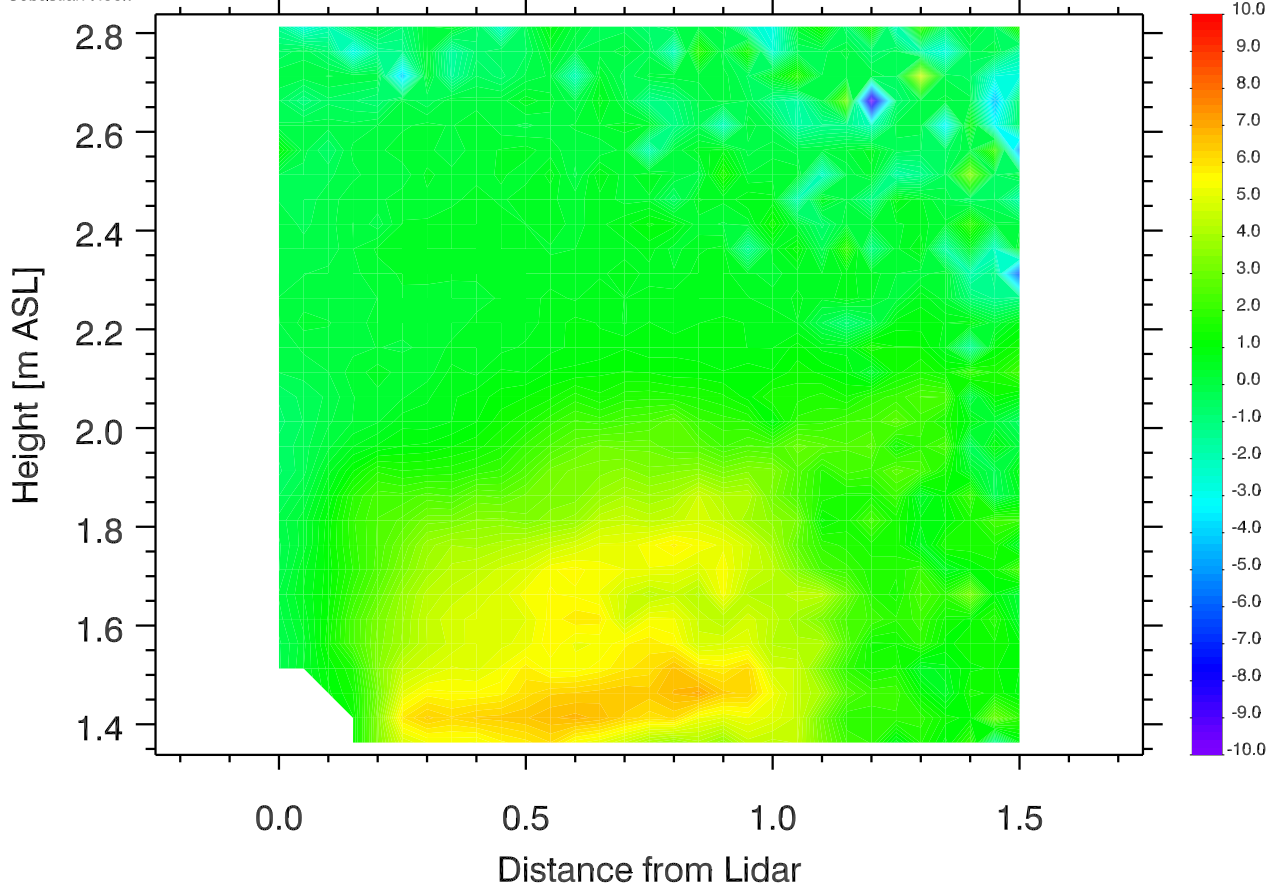
Data Density 10 Oct 2012 2330-2335 UTC

[-]



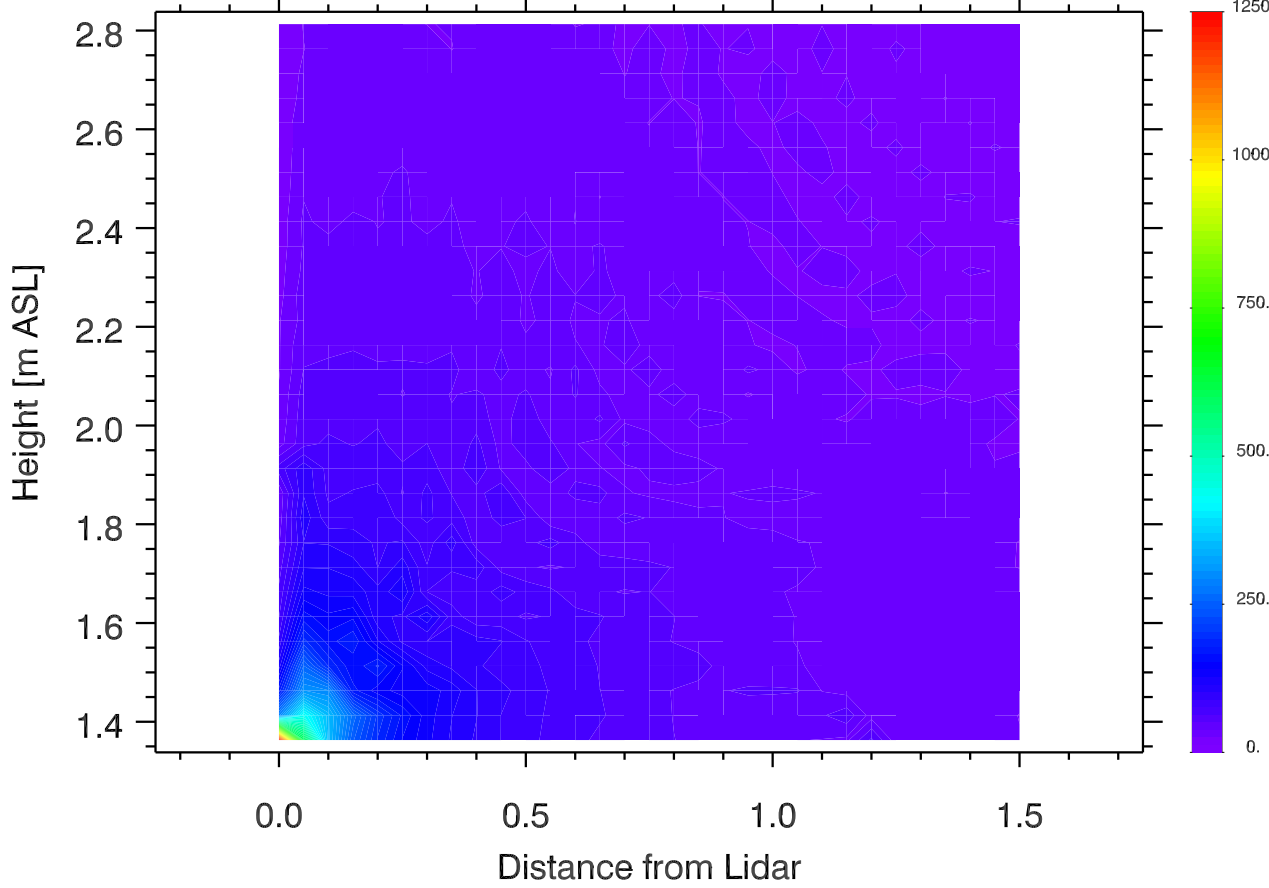
University of Utah LIDAR, MATERHORN
Elev. angle rage: -0.-90.
Azimuth rage: 0.-4.
Sebastian Hoch

Doppler Winds 10 Oct 2012 2335-2340 UTC [m s⁻¹]



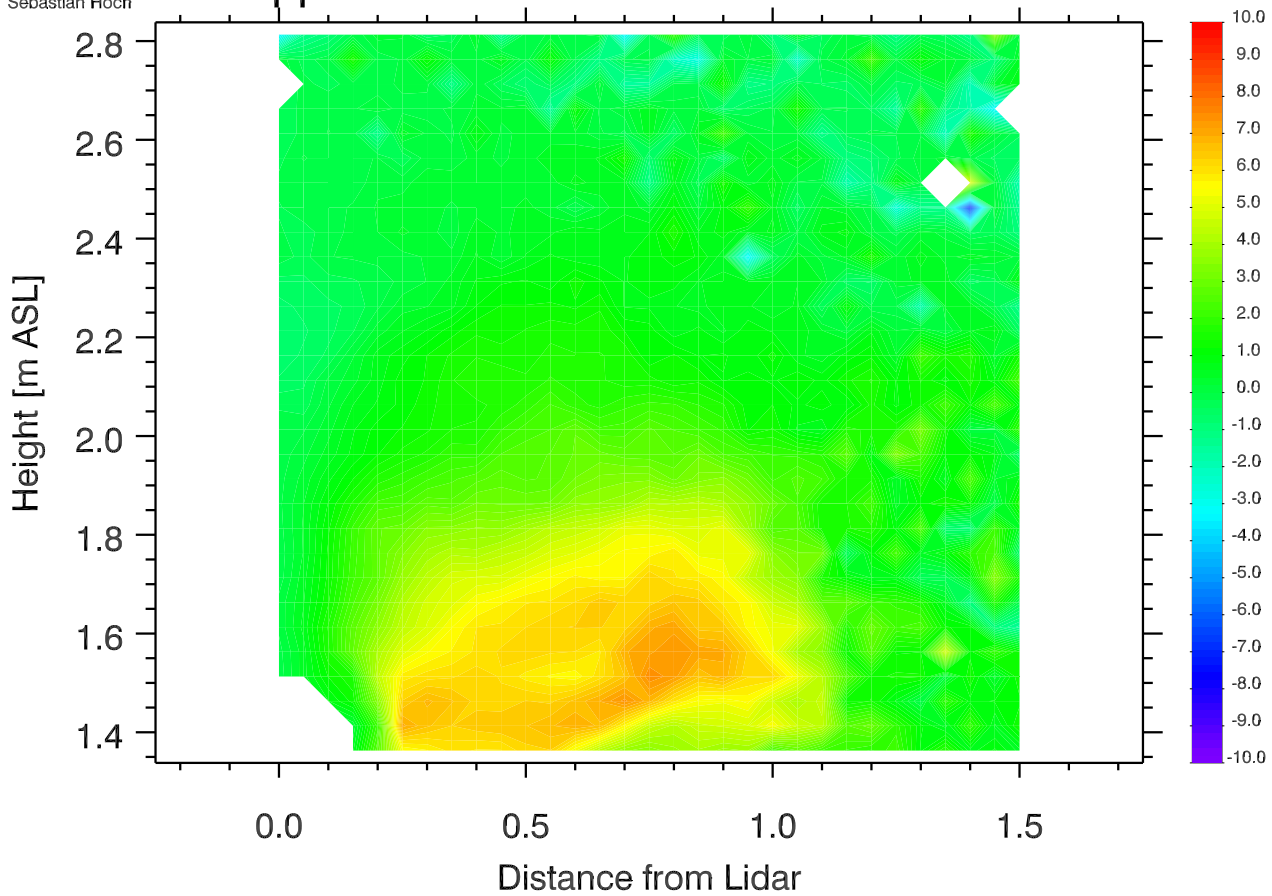
University of Utah LIDAR, MATERHORN
Elev. angle rage: -0.-90.
Azimuth rage: 0.-4.
Sebastian Hoch

Data Density 10 Oct 2012 2335-2340 UTC [-]



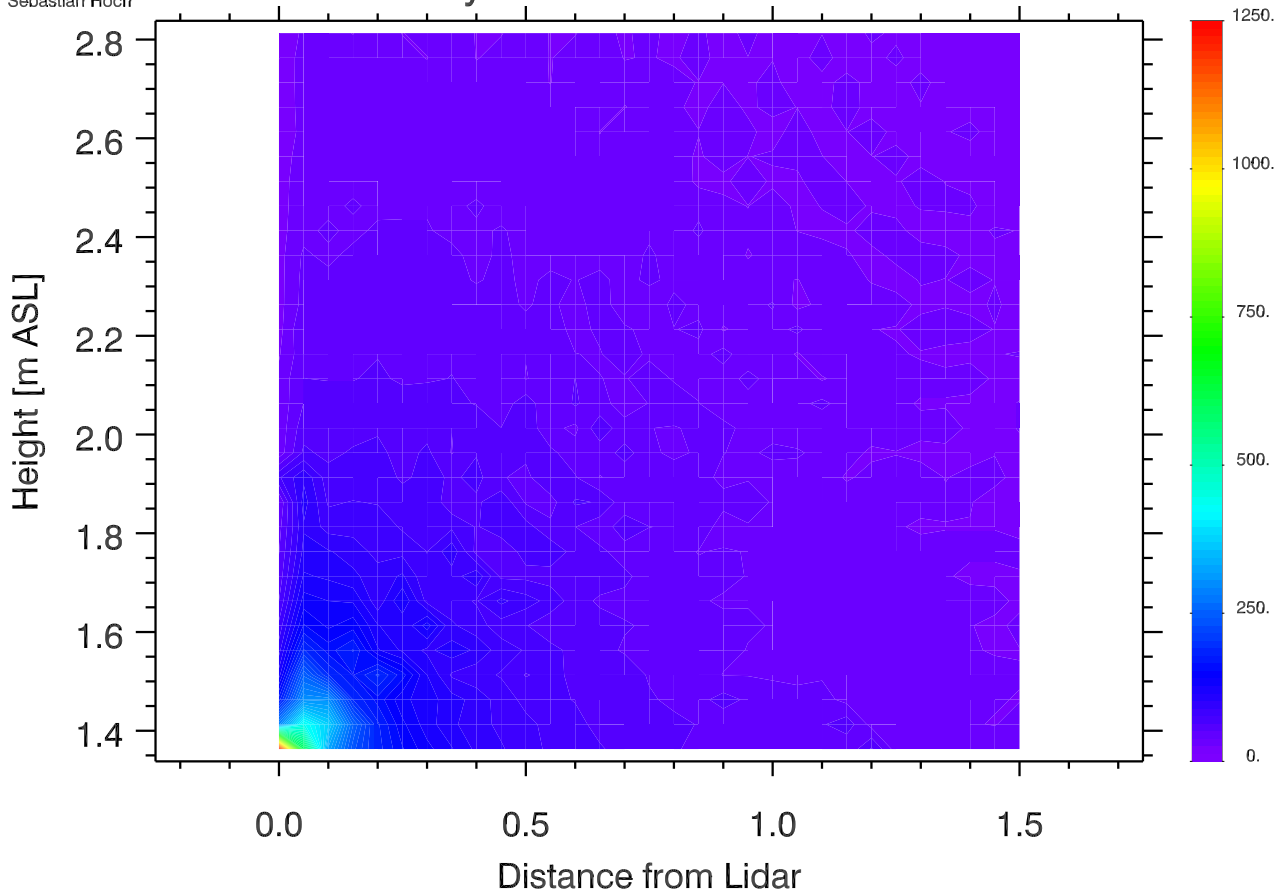
University of Utah LIDAR, MATERHORN
Elev. angle rage: -0.-90.
Azimuth rage: 0.-4.
Sebastian Hoch

Doppler Winds 10 Oct 2012 2340-2345 UTC [m s⁻¹]



University of Utah LIDAR, MATERHORN
Elev. angle rage: -0.-90.
Azimuth rage: 0.-4.
Sebastian Hoch

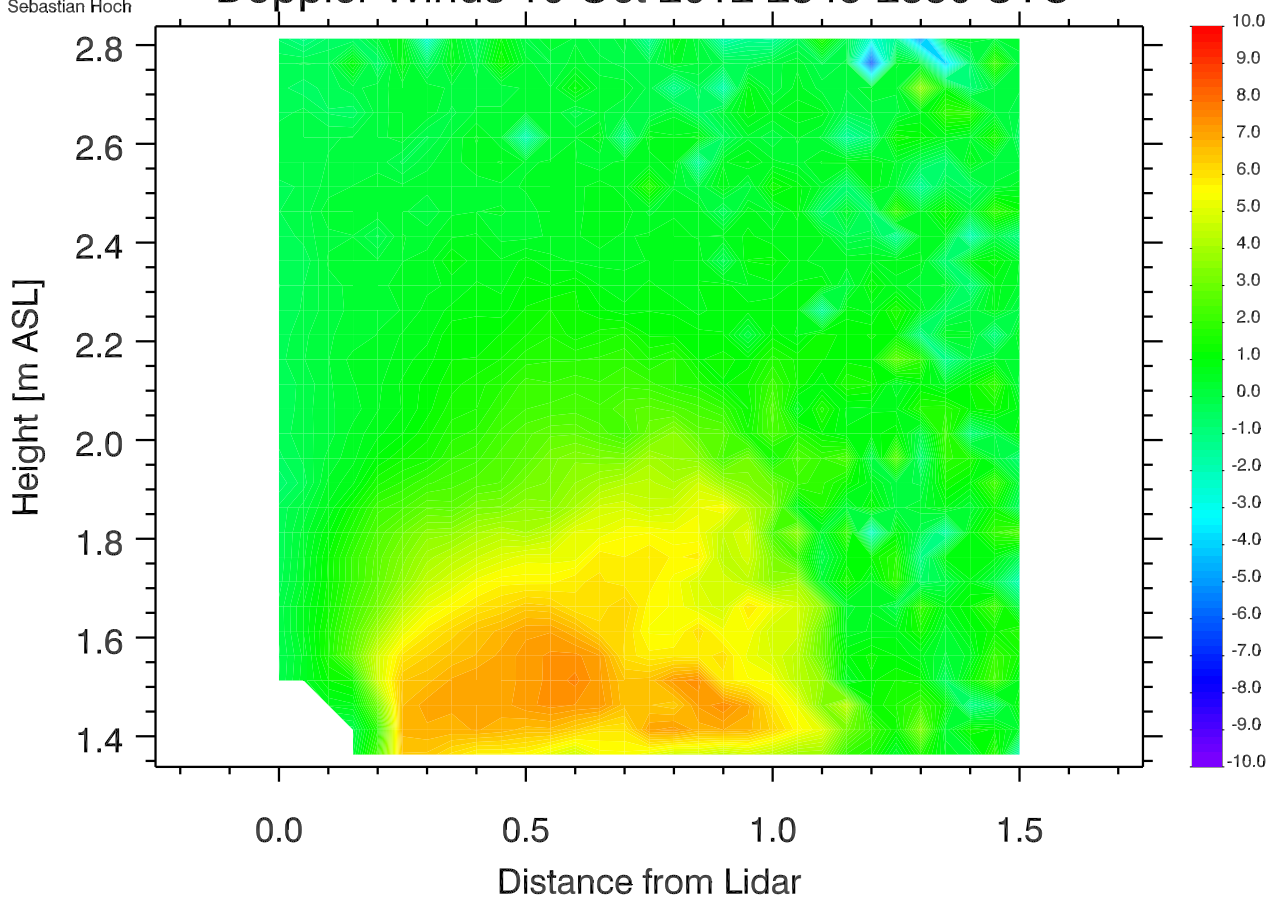
Data Density 10 Oct 2012 2340-2345 UTC [-]



University of Utah LIDAR, MATERHORN
Elev. angle rage: -0.-90.
Azimuth rage: 4.-4.
Sebastian Hoch

Doppler Winds 10 Oct 2012 2345-2350 UTC

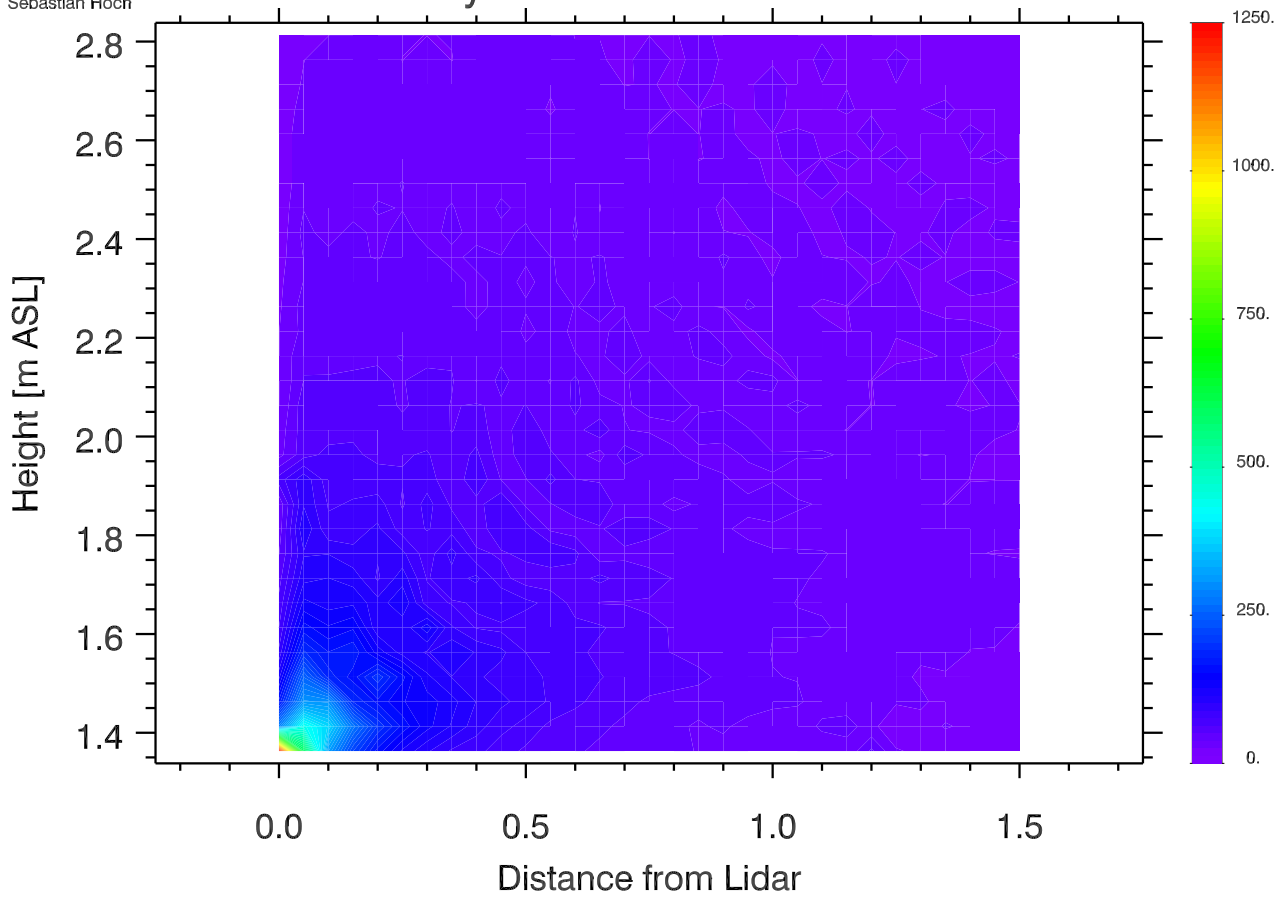
[m s⁻¹]



University of Utah LIDAR, MATERHORN
Elev. angle rage: -0.-90.
Azimuth rage: 4.-4.
Sebastian Hoch

Data Density 10 Oct 2012 2345-2350 UTC

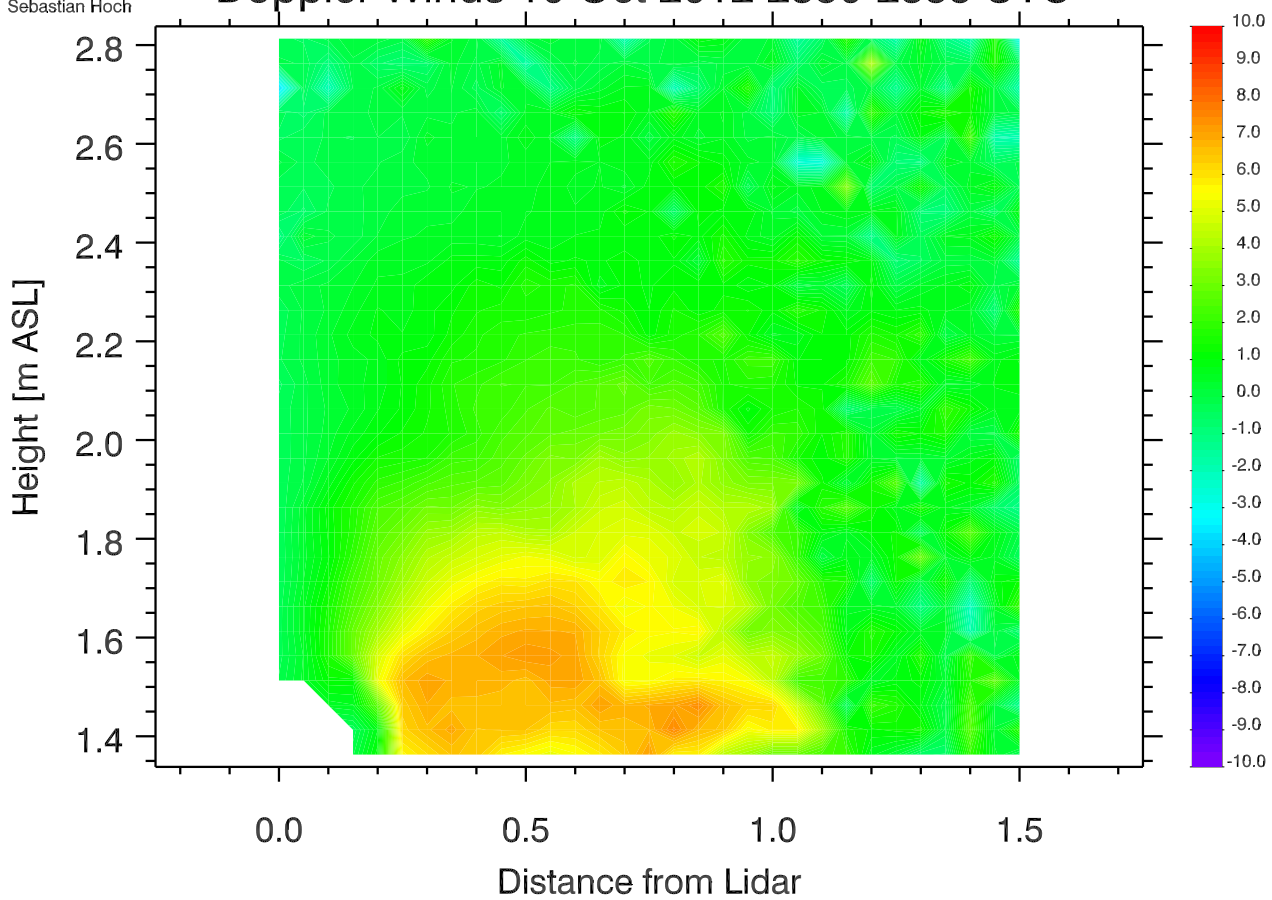
[-]



University of Utah LIDAR, MATERHORN
Elev. angle range: -0.-90.
Azimuth range: 4.-4.
Sebastian Hoch

Doppler Winds 10 Oct 2012 2350-2355 UTC

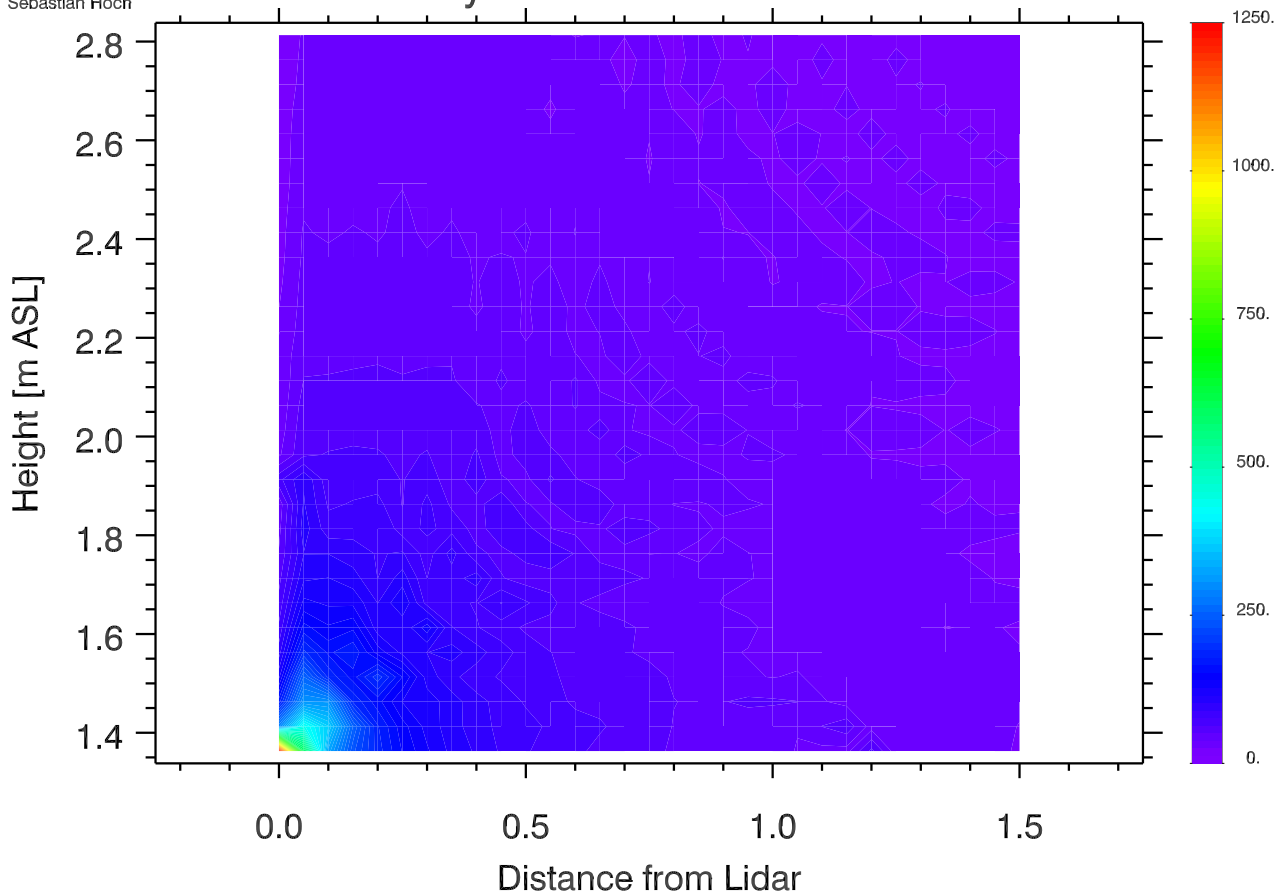
[m s⁻¹]



University of Utah LIDAR, MATERHORN
Elev. angle range: -0.-90.
Azimuth range: 4.-4.
Sebastian Hoch

Data Density 10 Oct 2012 2350-2355 UTC

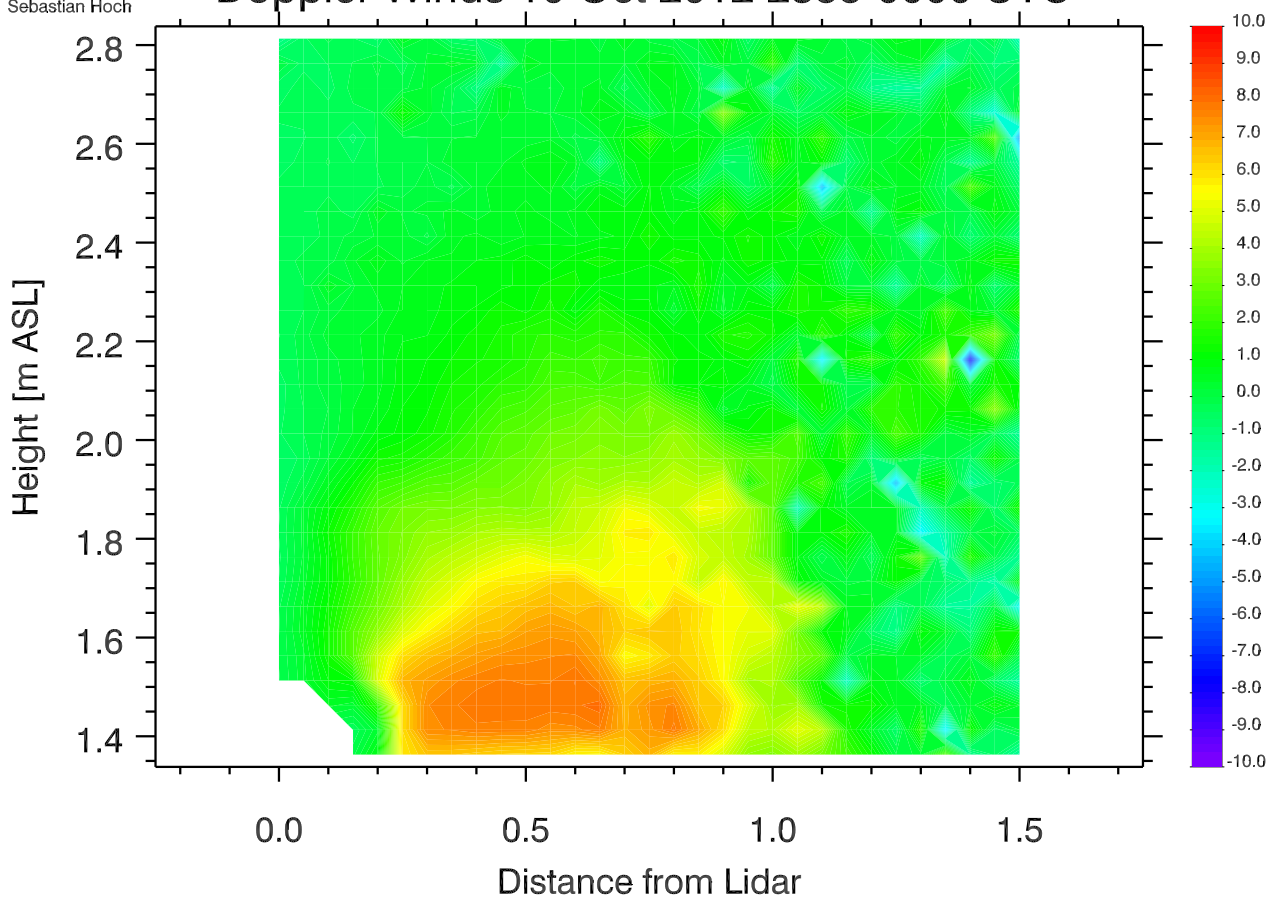
[-]



University of Utah LIDAR, MATERHORN
Elev. angle rage: -0.-90.
Azimuth rage: 4.-4.
Sebastian Hoch

Doppler Winds 10 Oct 2012 2355-0000 UTC

[m s⁻¹]



University of Utah LIDAR, MATERHORN
Elev. angle rage: -0.-90.
Azimuth rage: 4.-4.
Sebastian Hoch

Data Density 10 Oct 2012 2355-0000 UTC

[-]

