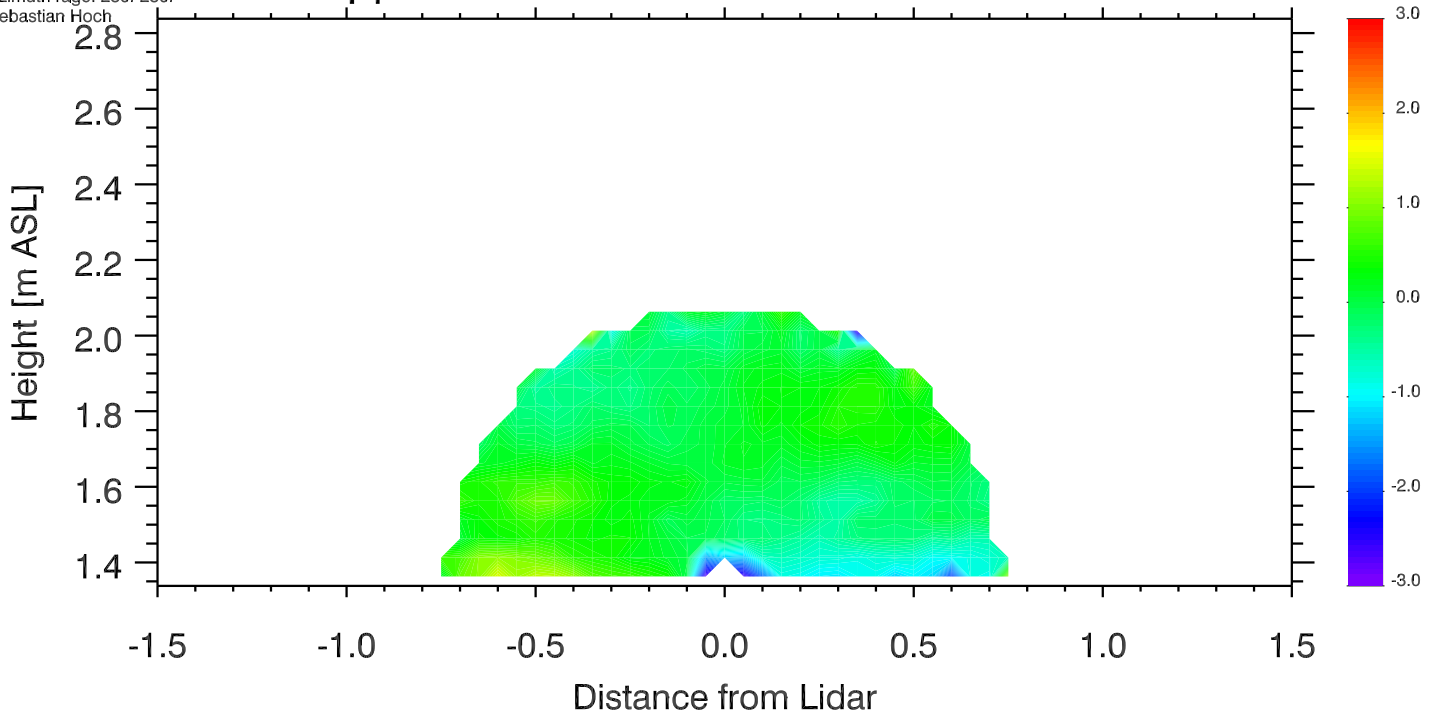


University of Utah LiDAR, MATERHORN
Elev. angle range: -0.-180.
Azimuth range: 280.-280.
Sebastian Hoch

Doppler Winds 14 Oct 2012 0756-0801 UTC

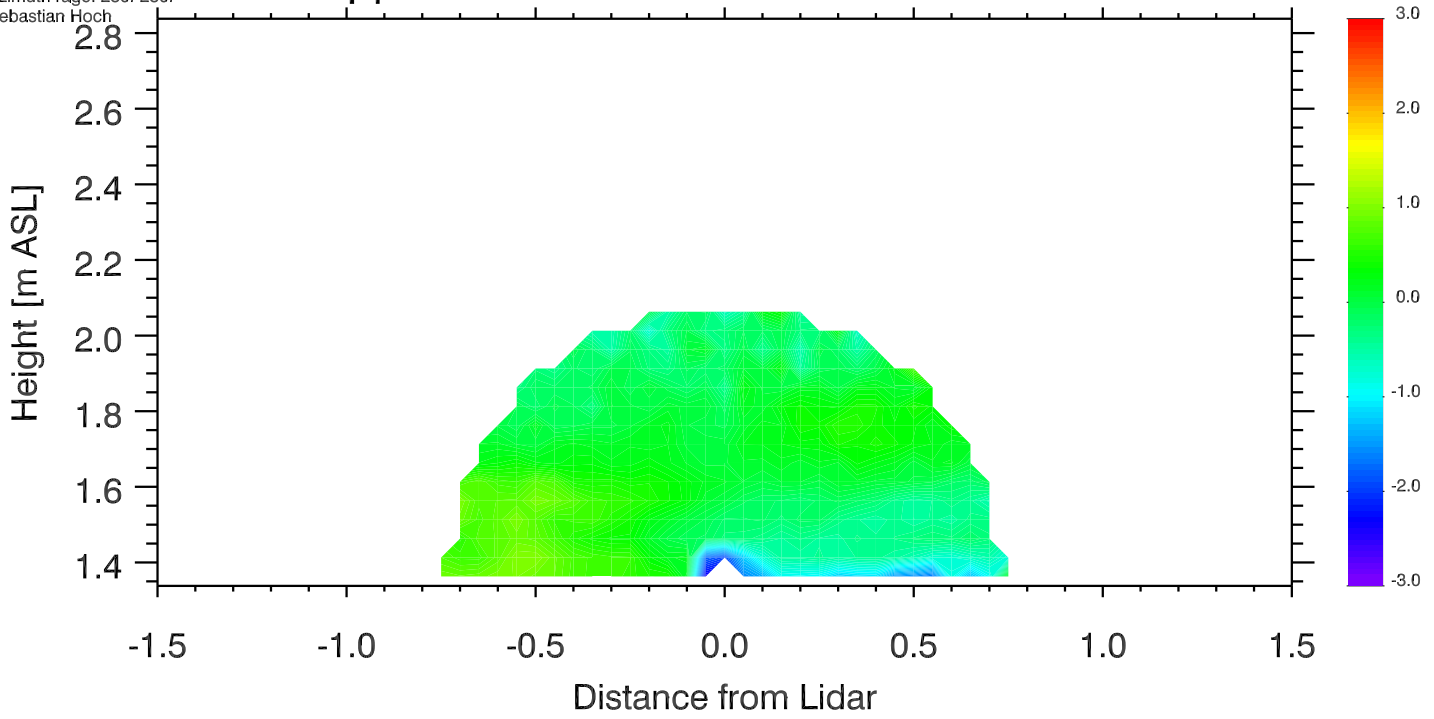
[m s⁻¹]



University of Utah LiDAR, MATERHORN
Elev. angle range: -0.-180.
Azimuth range: 280.-280.
Sebastian Hoch

Doppler Winds 14 Oct 2012 0801-0806 UTC

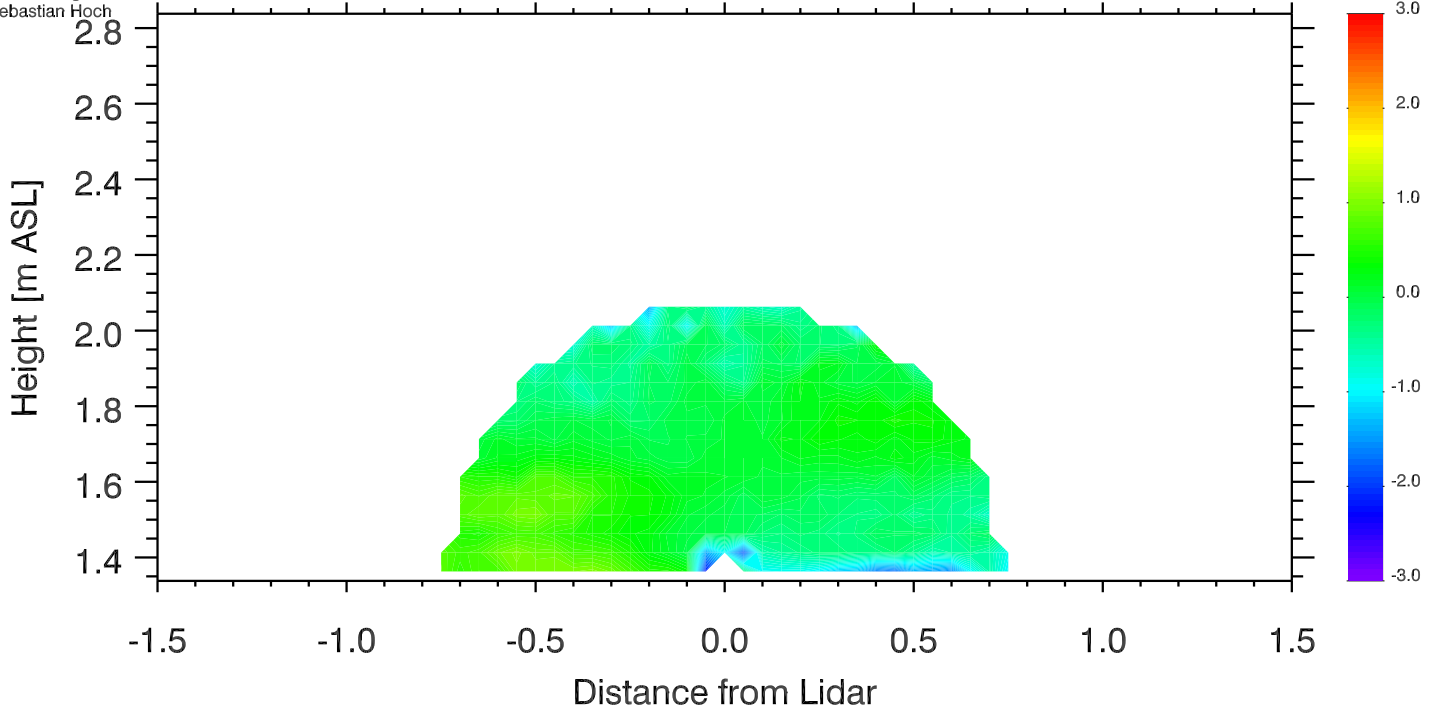
[m s⁻¹]



University of Utah LiDAR, MATERHORN
Elev. angle range: -0.-180.
Azimuth range: 0.-280.
Sebastian Hoch

Doppler Winds 14 Oct 2012 0806-0811 UTC

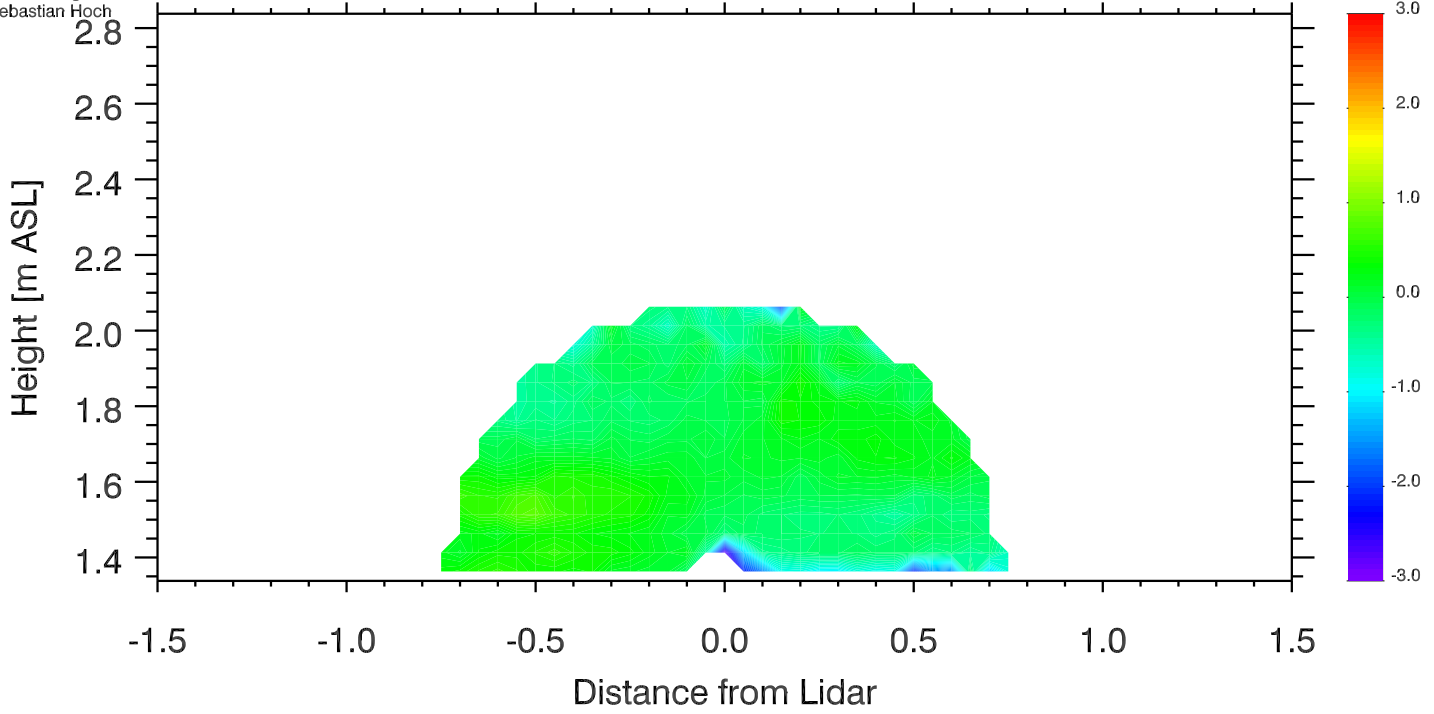
[m s⁻¹]



University of Utah LiDAR, MATERHORN
Elev. angle range: -0.-180.
Azimuth range: 280.-280.
Sebastian Hoch

Doppler Winds 14 Oct 2012 0811-0816 UTC

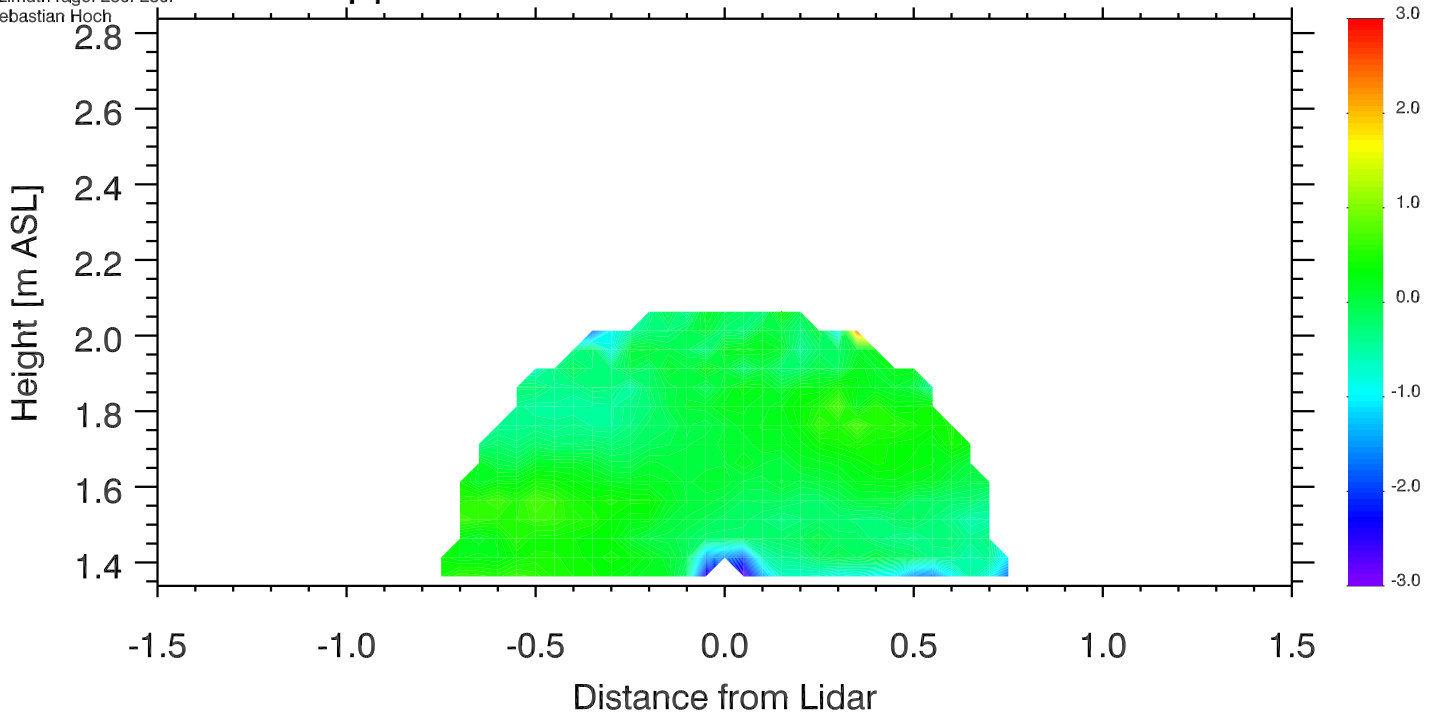
[m s⁻¹]



University of Utah LiDAR, MATERHORN
Elev. angle range: -0.-180.
Azimuth range: 280.-280.
Sebastian Hoch

Doppler Winds 14 Oct 2012 0816-0821 UTC

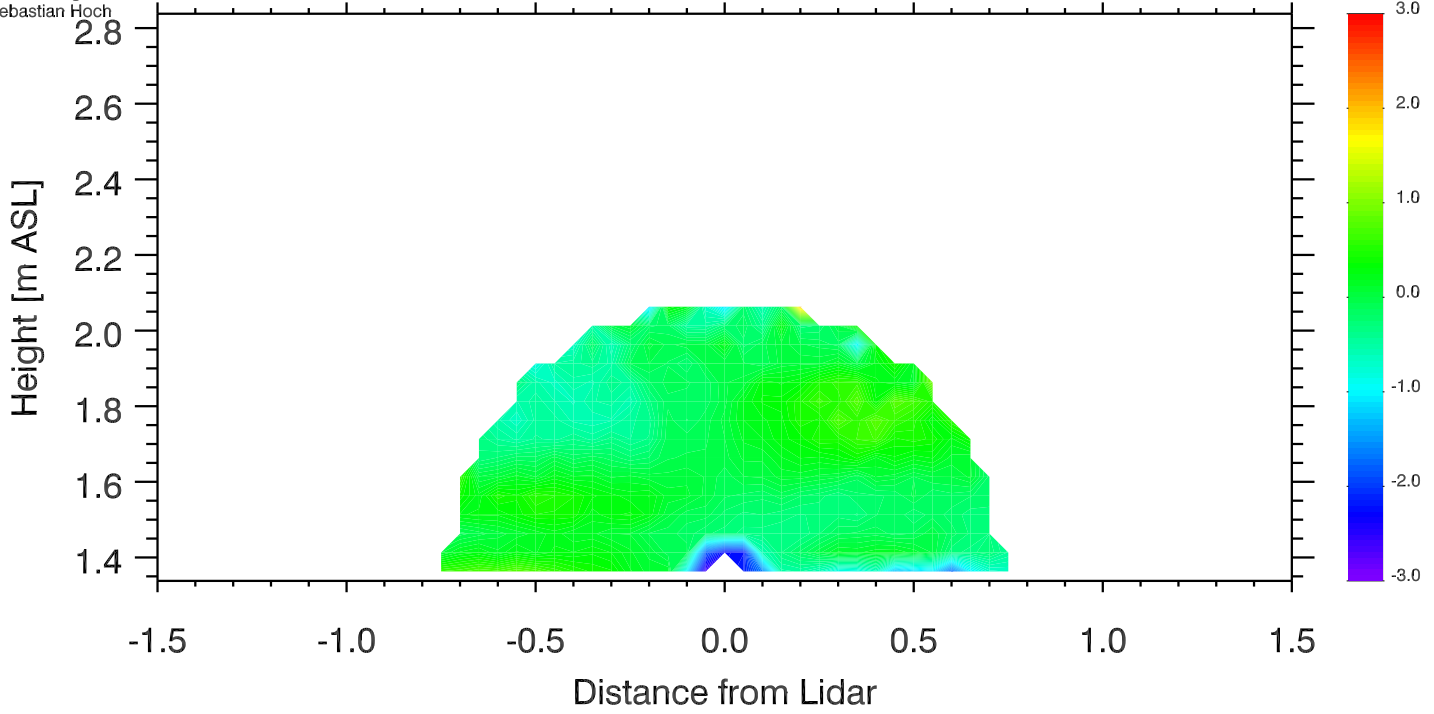
[m s⁻¹]



University of Utah LiDAR, MATERHORN
Elev. angle range: -0.-180.
Azimuth range: 0.-280.
Sebastian Hoch

Doppler Winds 14 Oct 2012 0821-0826 UTC

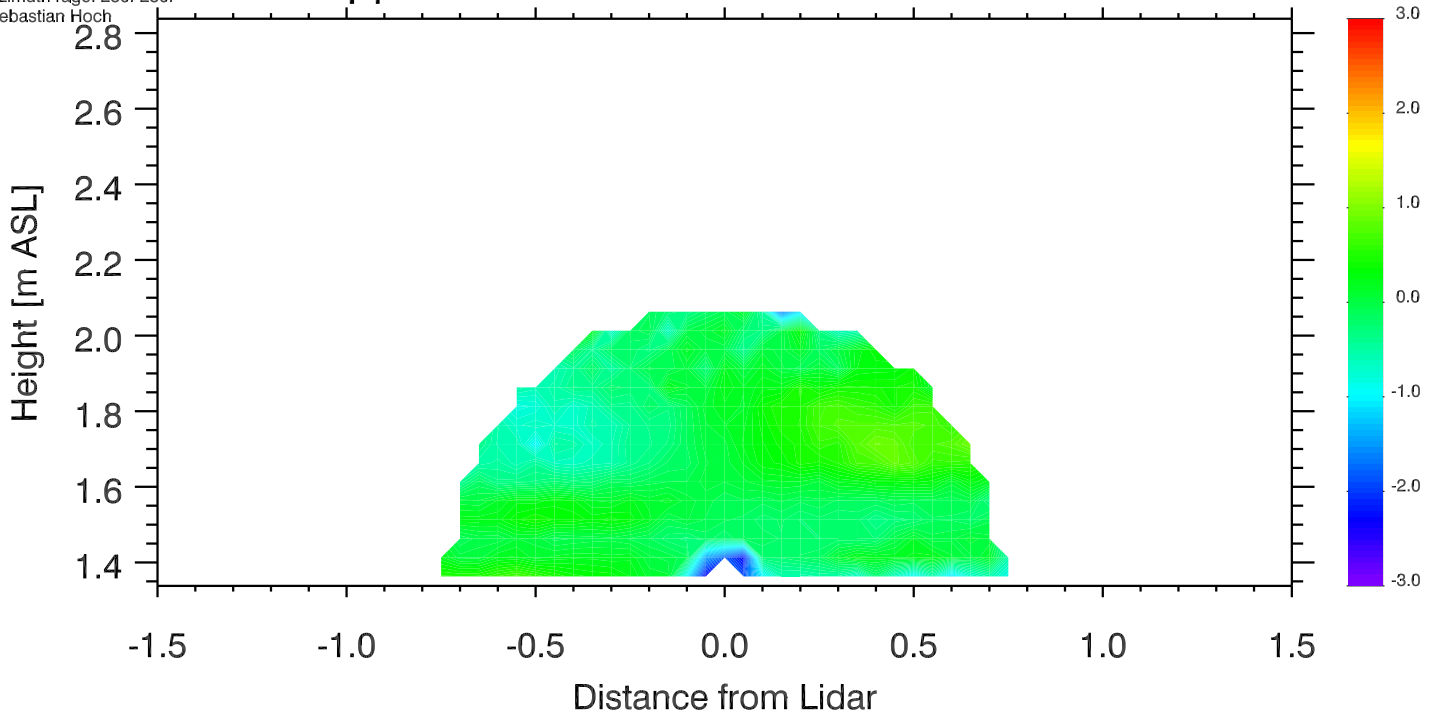
[m s⁻¹]



University of Utah LiDAR, MATERHORN
Elev. angle range: -0.-180.
Azimuth range: 280.-280.
Sebastian Hoch

Doppler Winds 14 Oct 2012 0826-0831 UTC

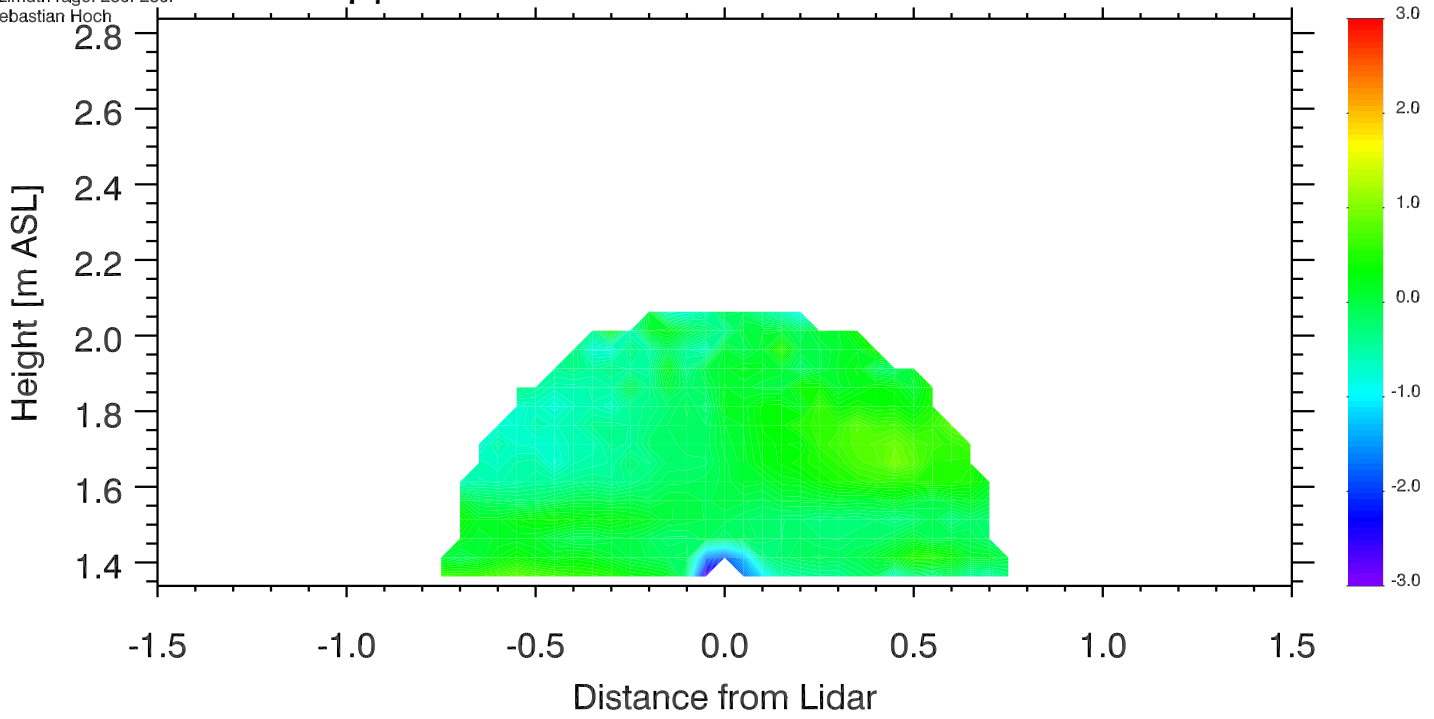
[m s⁻¹]



University of Utah LiDAR, MATERHORN
Elev. angle range: -0.-180.
Azimuth range: 280.-280.
Sebastian Hoch

Doppler Winds 14 Oct 2012 0831-0836 UTC

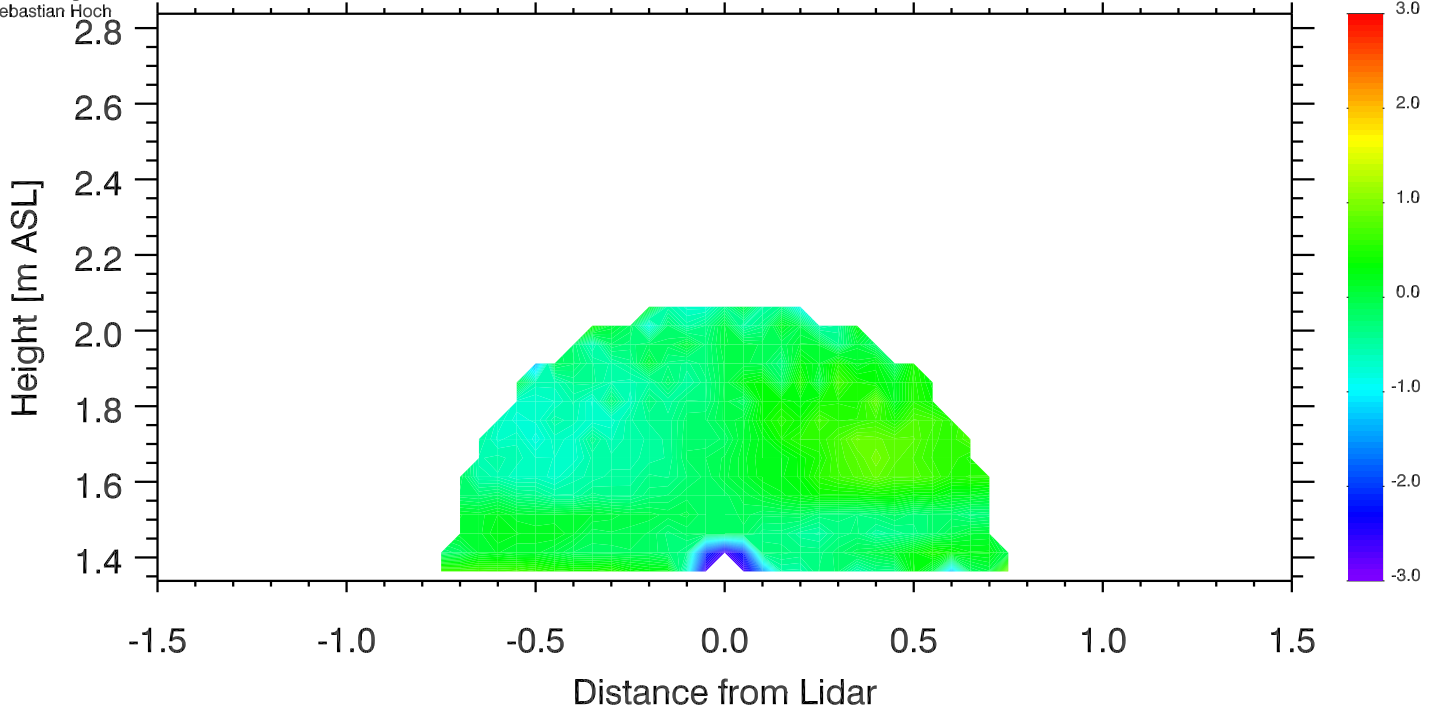
[m s⁻¹]



University of Utah LiDAR, MATERHORN
Elev. angle range: -0.-180.
Azimuth range: 0.-280.
Sebastian Hoch

Doppler Winds 14 Oct 2012 0836-0841 UTC

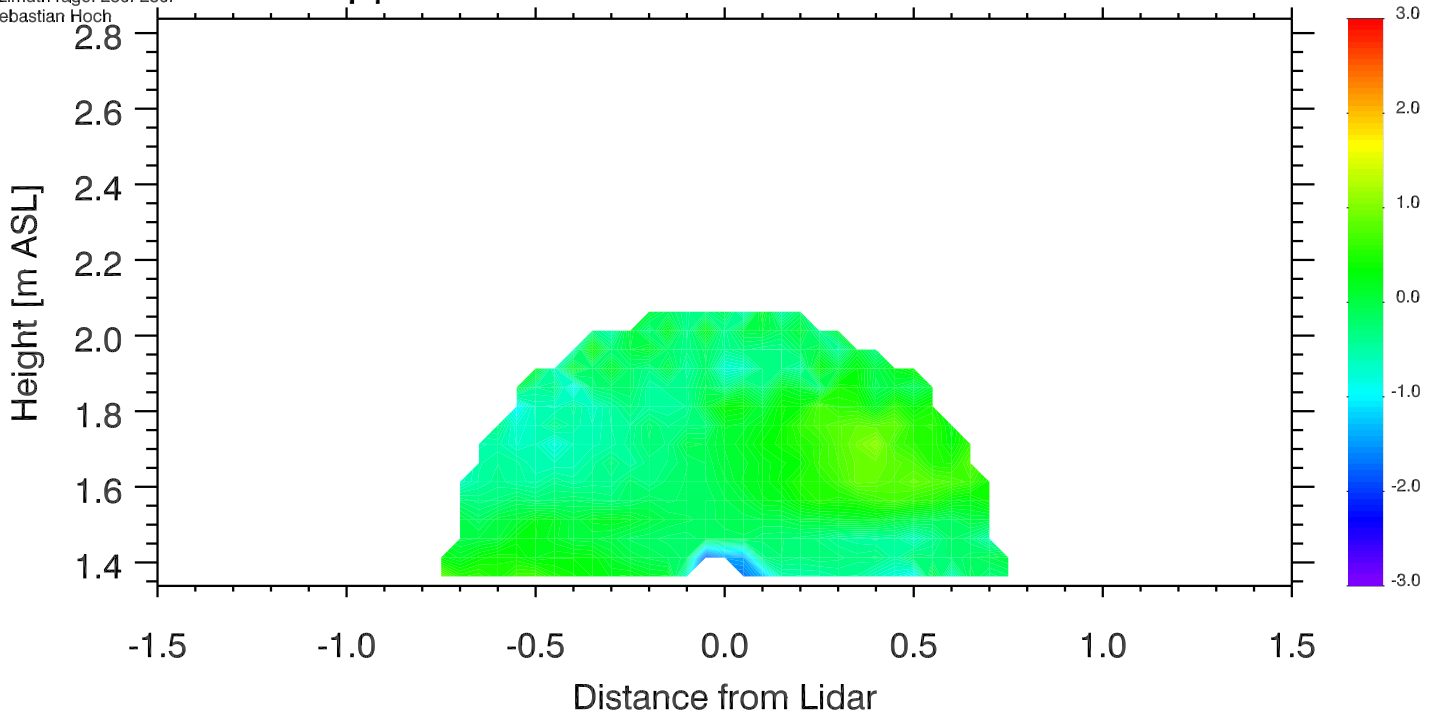
[m s⁻¹]



University of Utah LiDAR, MATERHORN
Elev. angle range: -0.-180.
Azimuth range: 280.-280.
Sebastian Hoch

Doppler Winds 14 Oct 2012 0841-0846 UTC

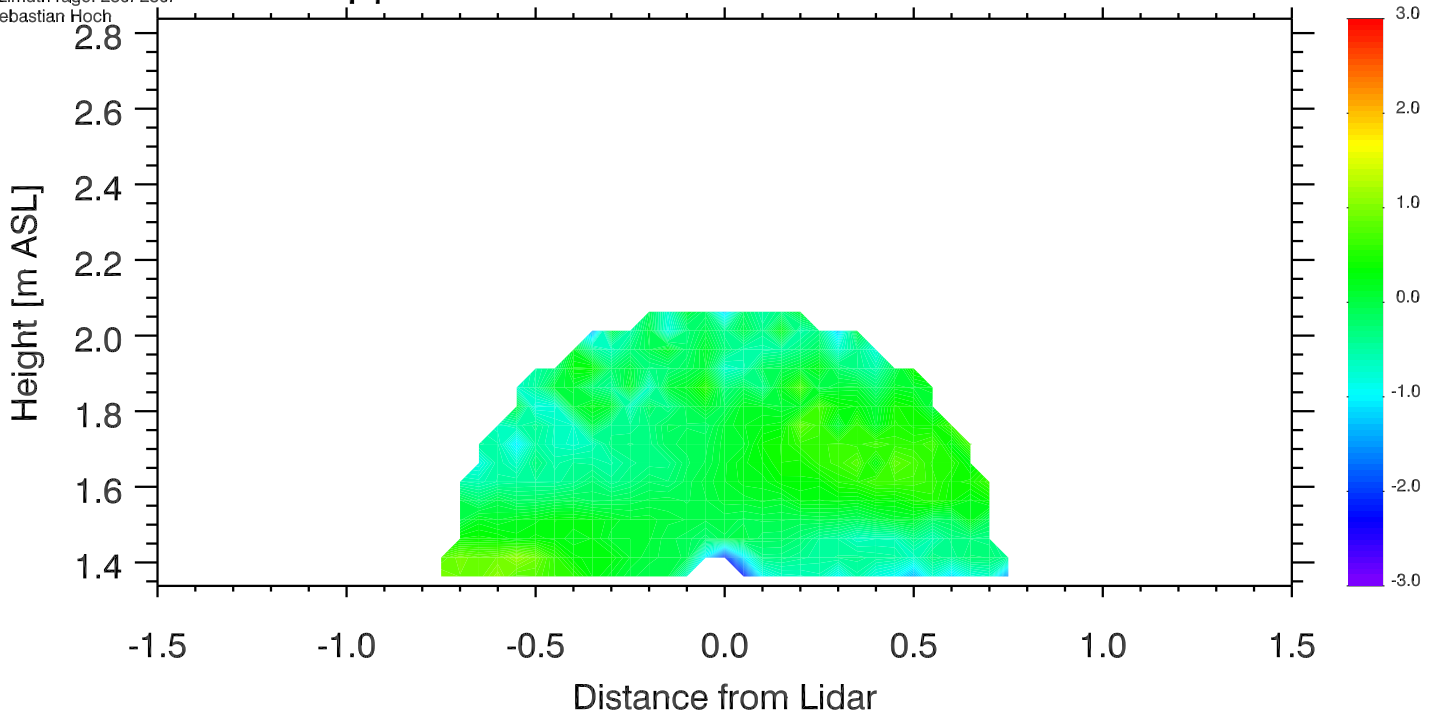
[m s⁻¹]



University of Utah LiDAR, MATERHORN
Elev. angle range: -0.-180.
Azimuth range: 280.-280.
Sebastian Hoch

Doppler Winds 14 Oct 2012 0846-0851 UTC

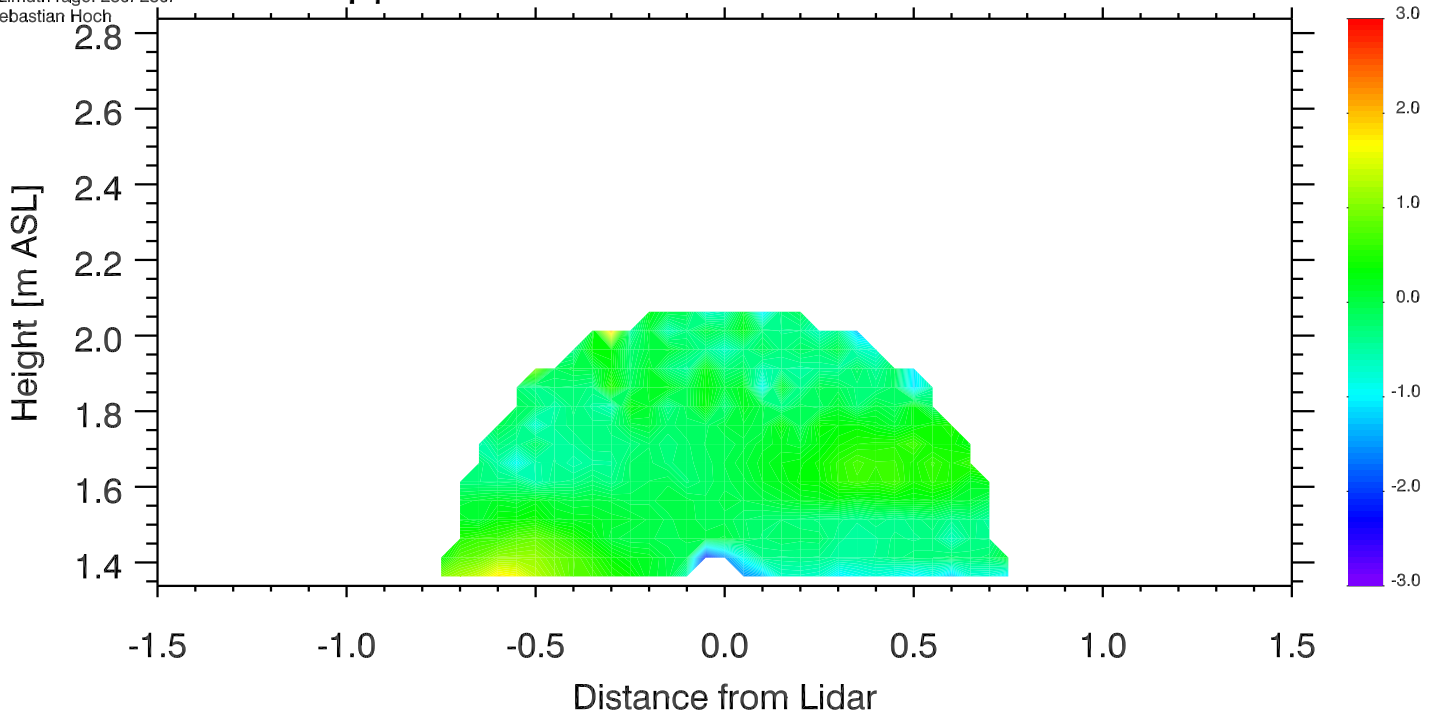
[m s⁻¹]



University of Utah LiDAR, MATERHORN
Elev. angle range: -0.-180.
Azimuth range: 280.-280.
Sebastian Hoch

Doppler Winds 14 Oct 2012 0851-0856 UTC

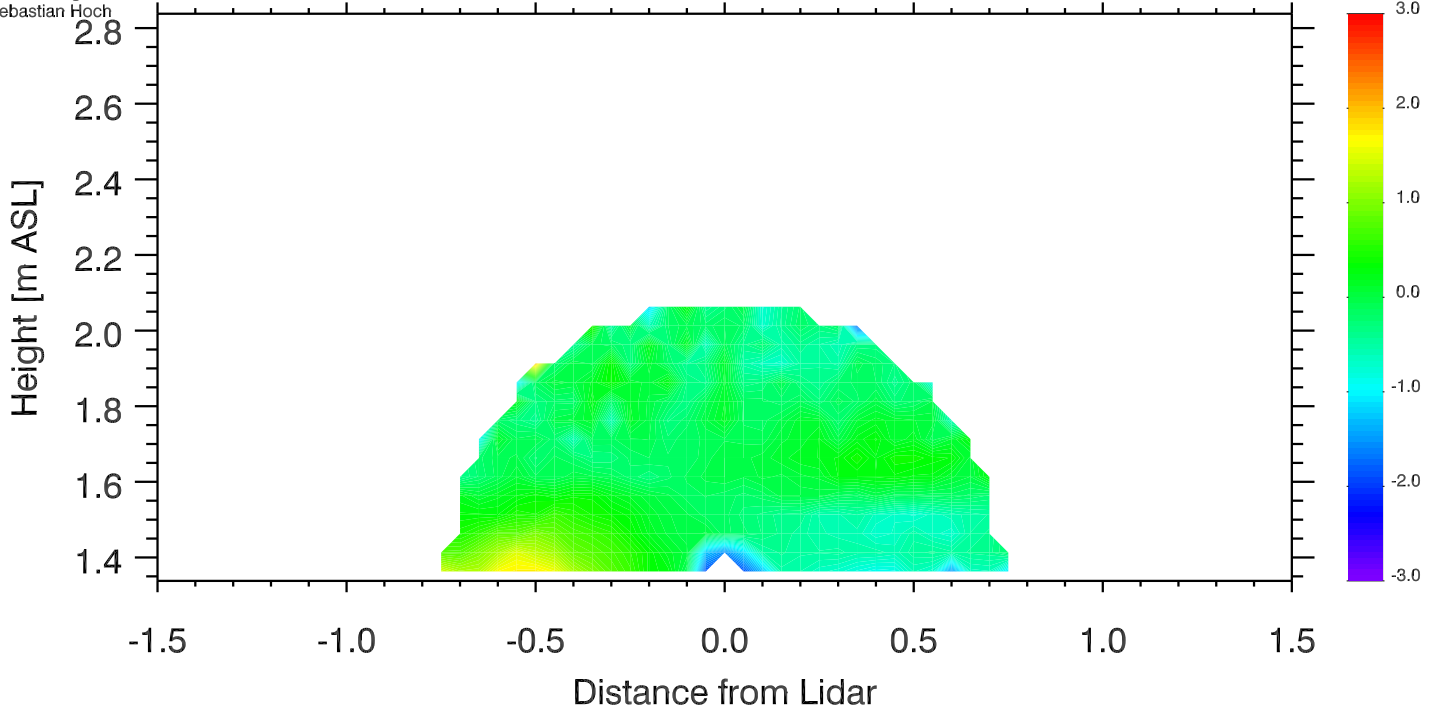
[m s⁻¹]



University of Utah LiDAR, MATERHORN
Elev. angle range: -0.-180.
Azimuth range: 280.-280.
Sebastian Hoch

Doppler Winds 14 Oct 2012 0856-0901 UTC

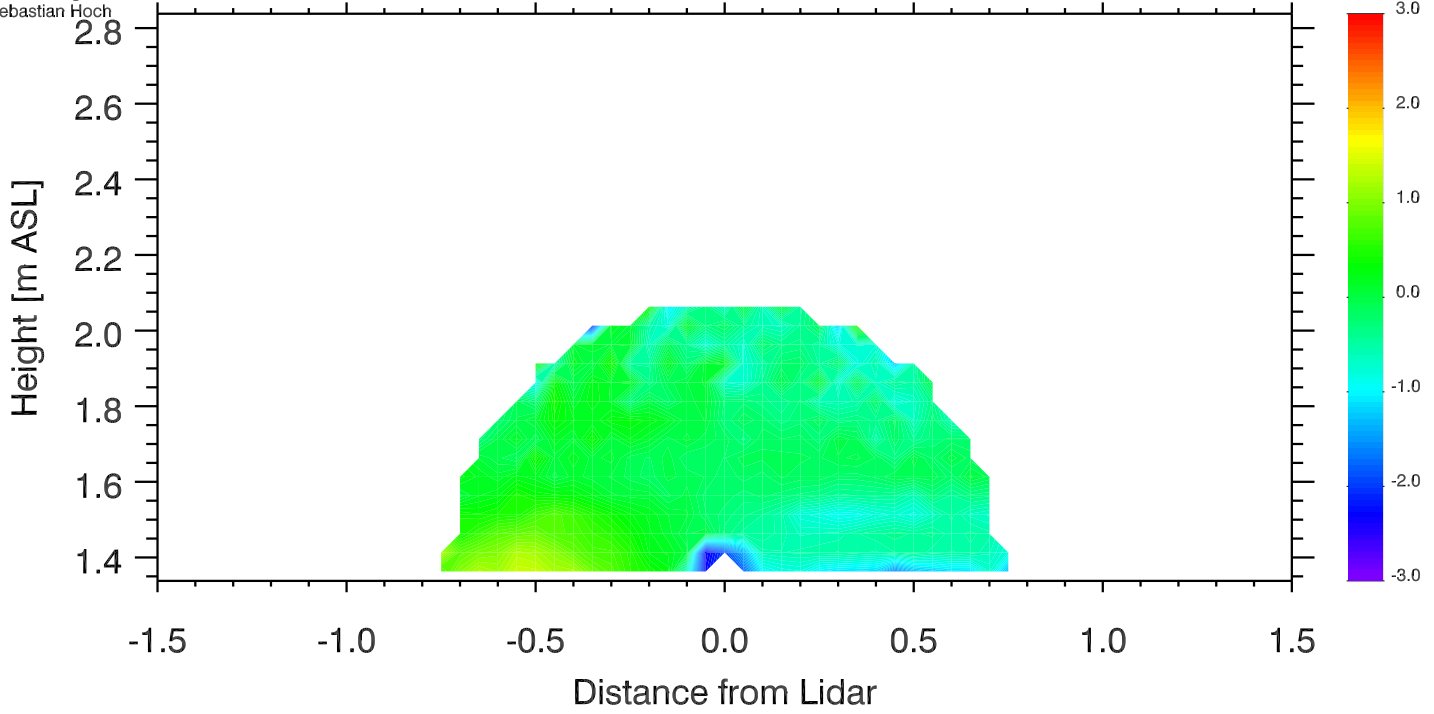
[m s⁻¹]



University of Utah LiDAR, MATERHORN
Elev. angle range: -0.-180.
Azimuth range: 280.-280.
Sebastian Hoch

Doppler Winds 14 Oct 2012 0901-0906 UTC

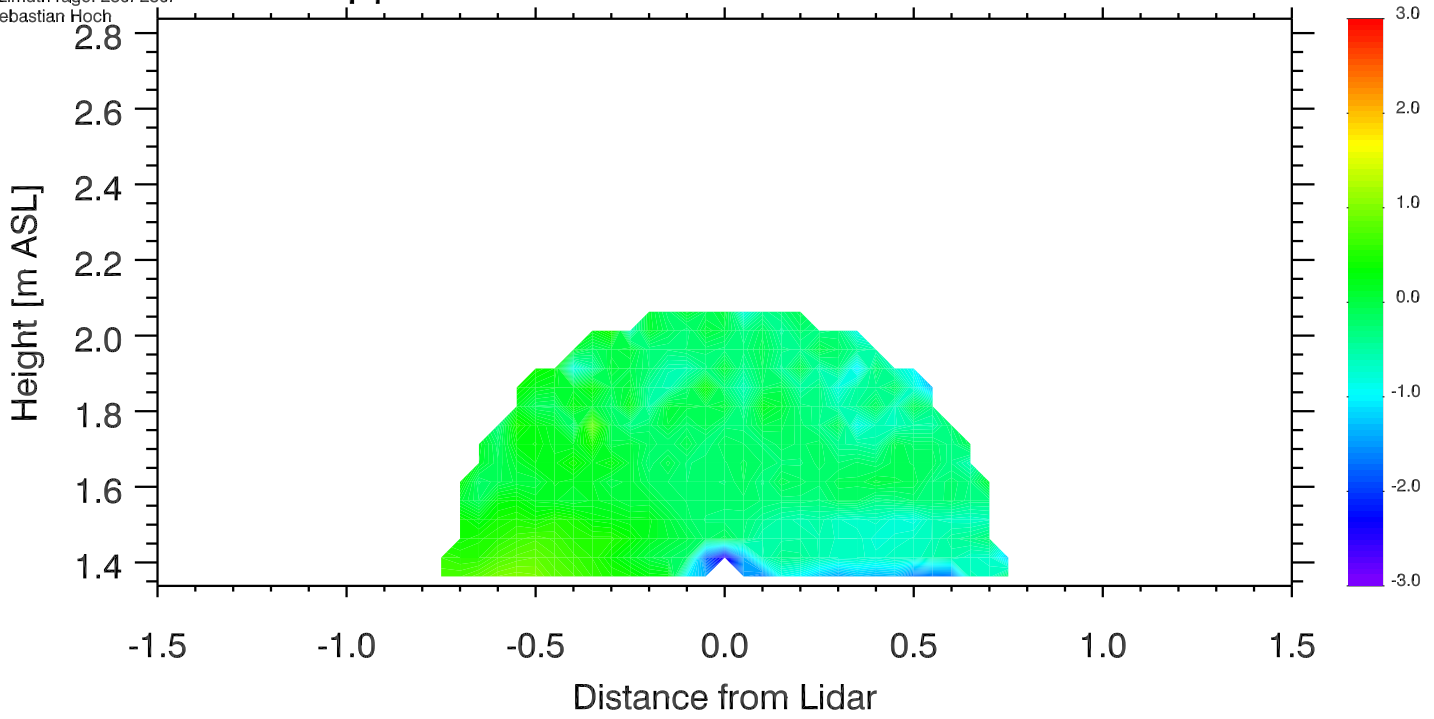
[m s⁻¹]



University of Utah LiDAR, MATERHORN
Elev. angle range: -0.-180.
Azimuth range: 280.-280.
Sebastian Hoch

Doppler Winds 14 Oct 2012 0906-0911 UTC

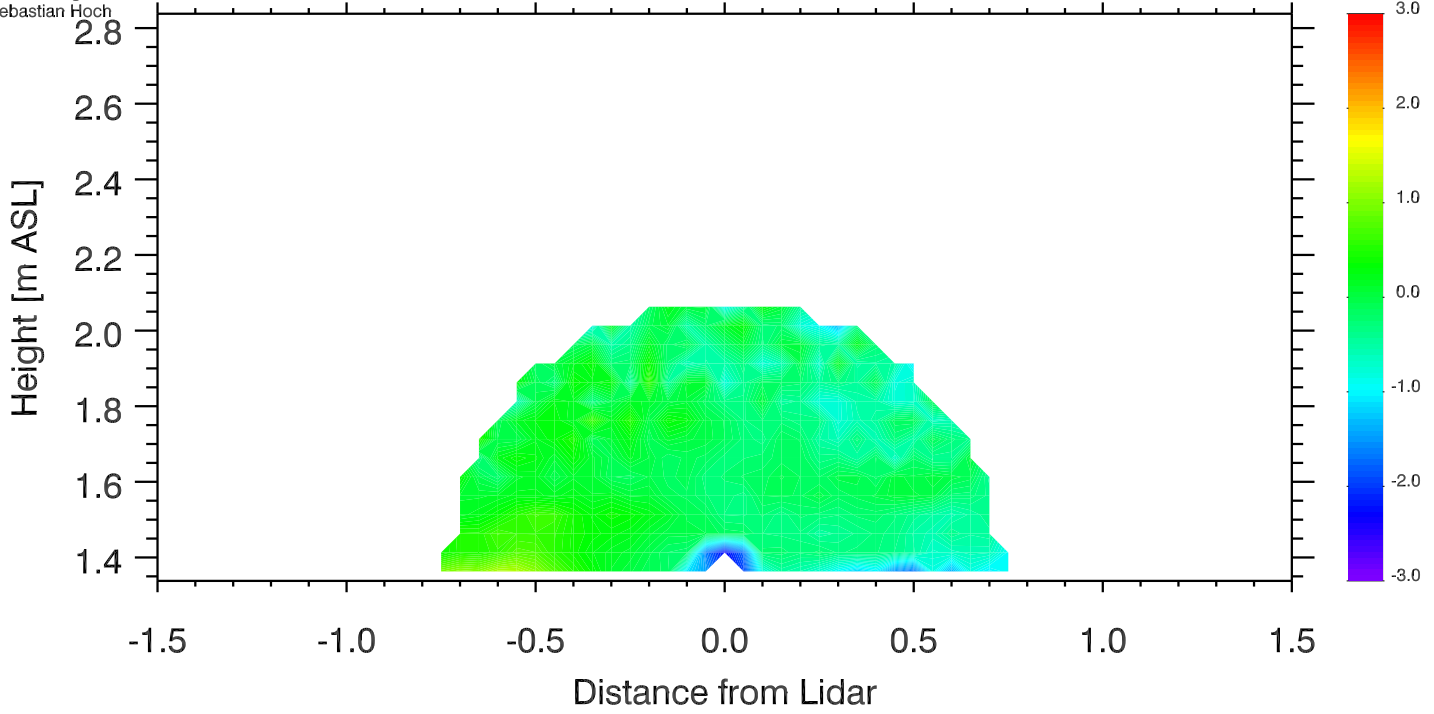
[m s⁻¹]



University of Utah LiDAR, MATERHORN
Elev. angle range: -0.-180.
Azimuth range: 280.-280.
Sebastian Hoch

Doppler Winds 14 Oct 2012 0911-0916 UTC

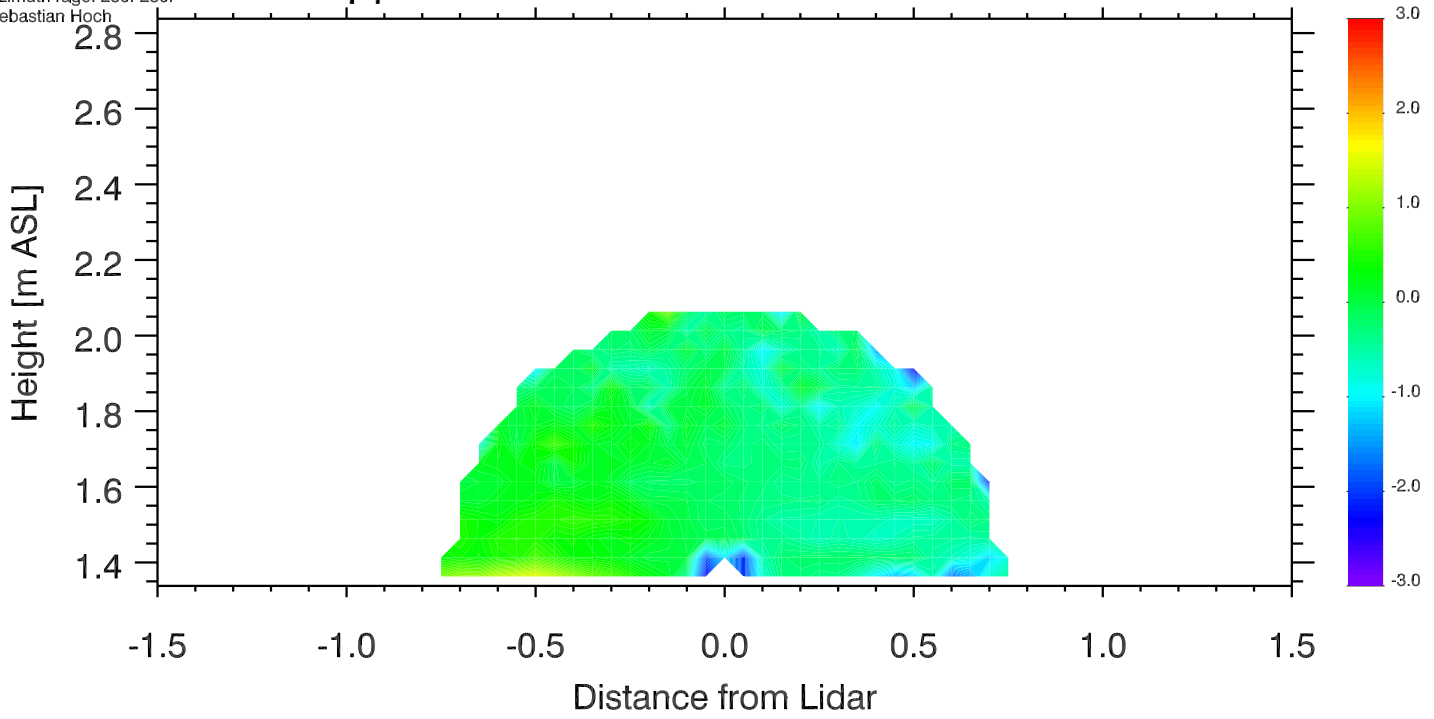
[m s⁻¹]



University of Utah LiDAR, MATERHORN
Elev. angle range: -0.-180.
Azimuth range: 280.-280.
Sebastian Hoch

Doppler Winds 14 Oct 2012 0916-0921 UTC

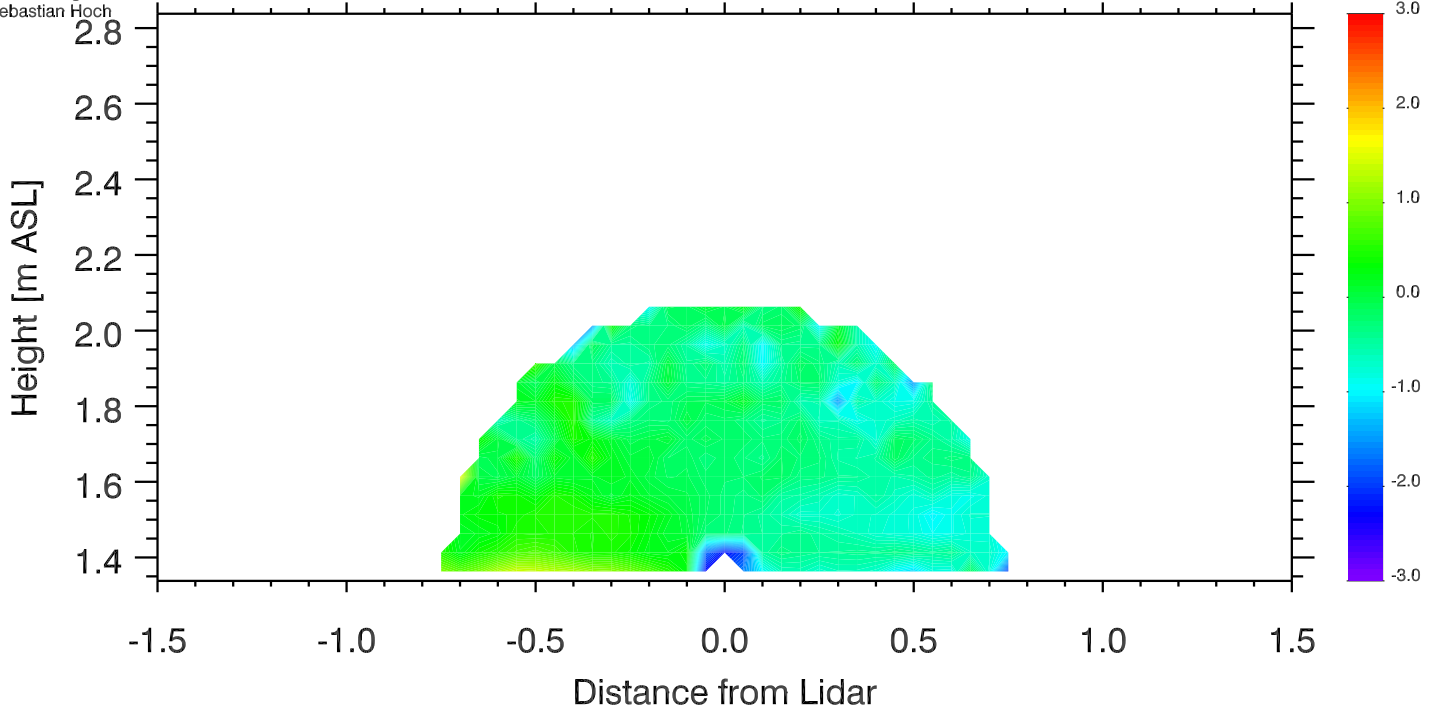
[m s⁻¹]



University of Utah LiDAR, MATERHORN
Elev. angle range: -0.-180.
Azimuth range: 280.-280.
Sebastian Hoch

Doppler Winds 14 Oct 2012 0921-0926 UTC

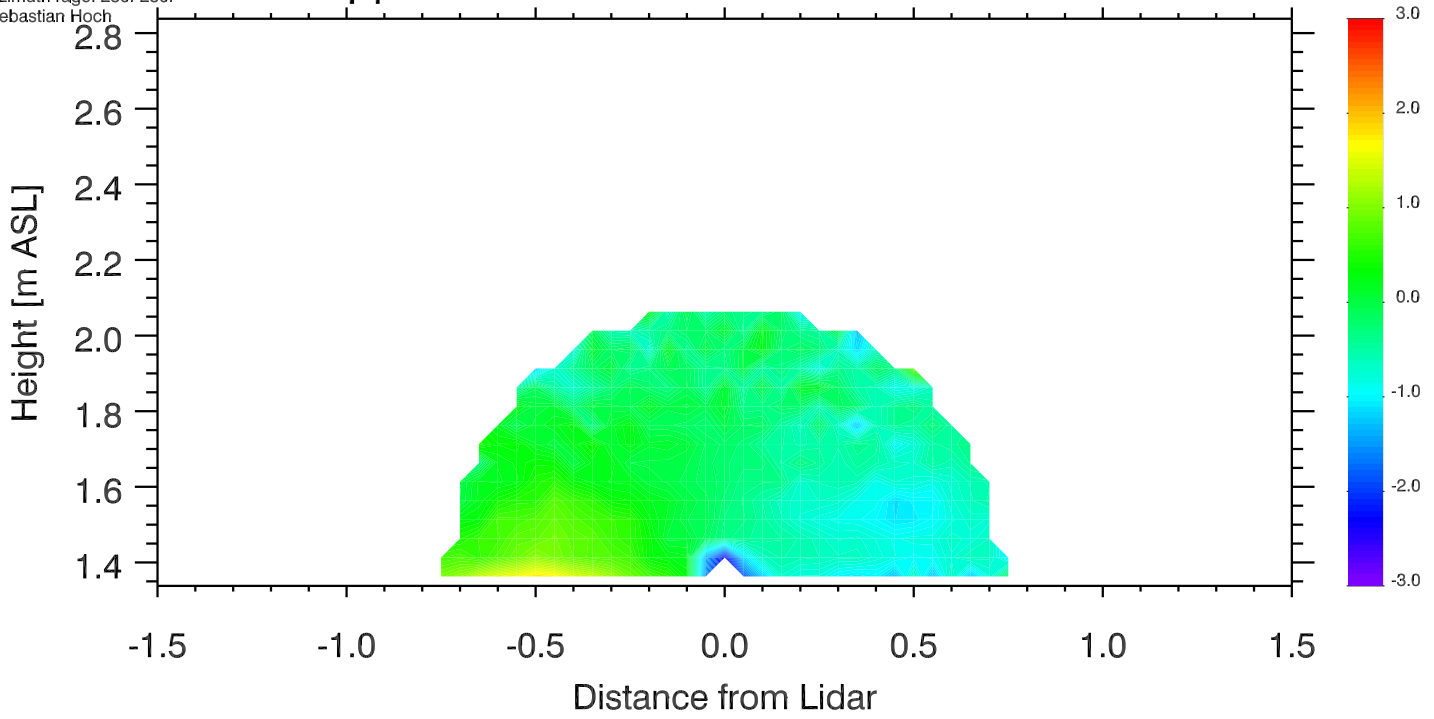
[m s⁻¹]



University of Utah LiDAR, MATERHORN
Elev. angle range: -0.-180.
Azimuth range: 280.-280.
Sebastian Hoch

Doppler Winds 14 Oct 2012 0926-0931 UTC

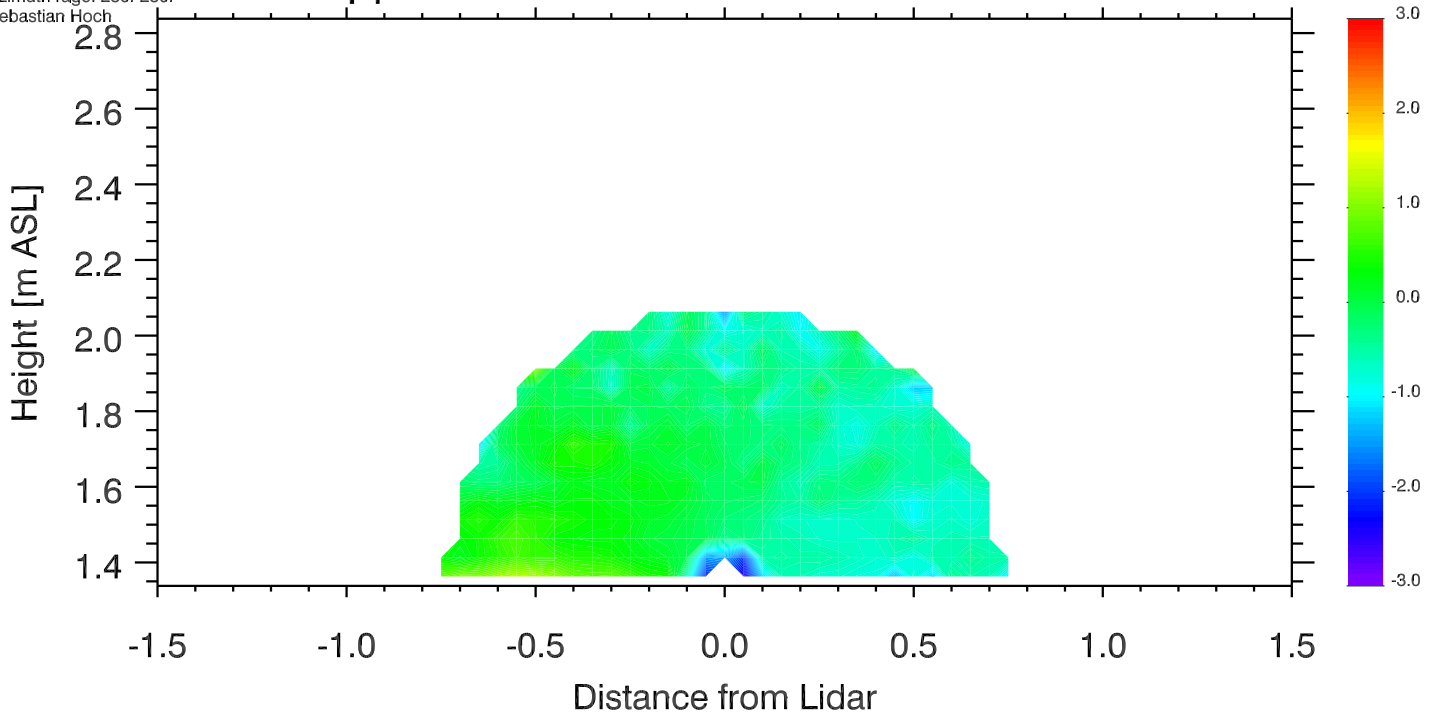
[m s⁻¹]



University of Utah LiDAR, MATERHORN
Elev. angle range: -0.-180.
Azimuth range: 280.-280.
Sebastian Hoch

Doppler Winds 14 Oct 2012 0931-0936 UTC

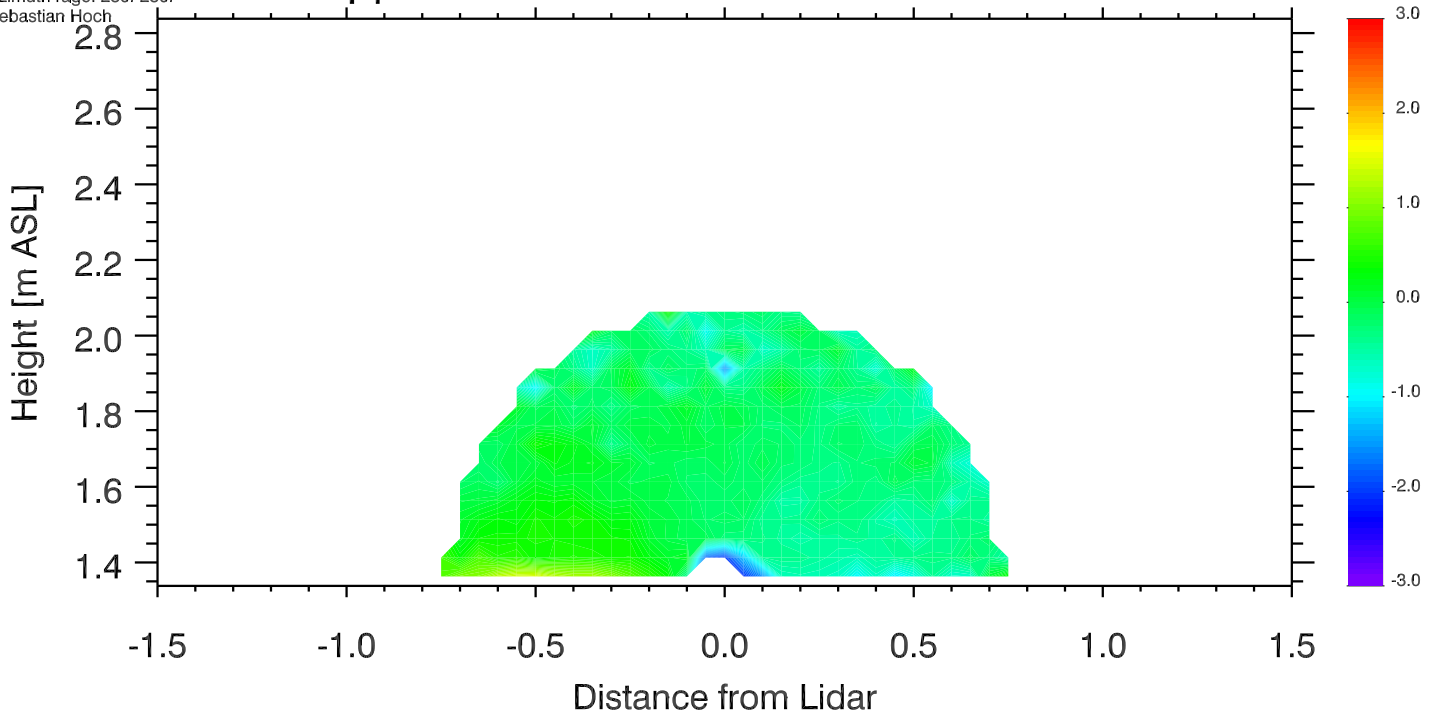
[m s⁻¹]



University of Utah LiDAR, MATERHORN
Elev. angle range: -0.-180.
Azimuth range: 280.-280.
Sebastian Hoch

Doppler Winds 14 Oct 2012 0936-0941 UTC

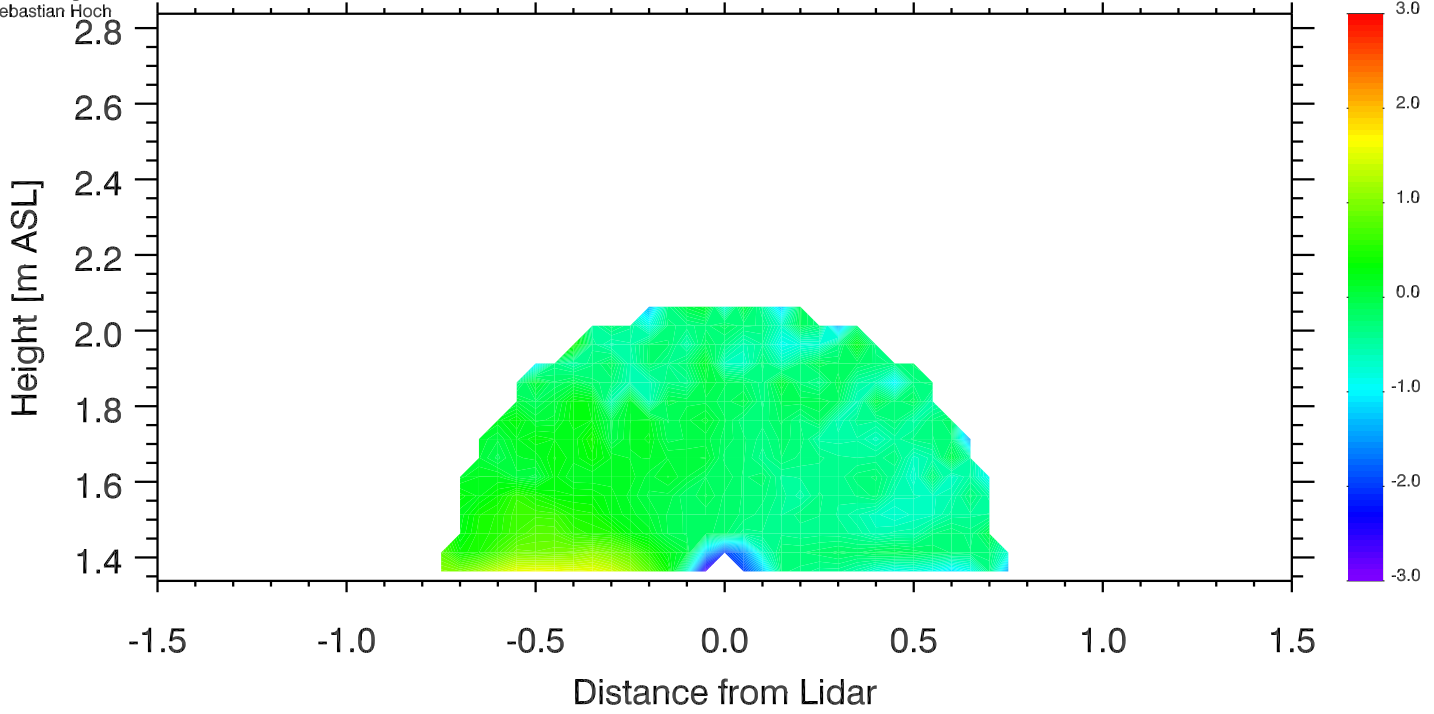
[m s⁻¹]



University of Utah LiDAR, MATERHORN
Elev. angle range: -0.-180.
Azimuth range: 280.-280.
Sebastian Hoch

Doppler Winds 14 Oct 2012 0941-0946 UTC

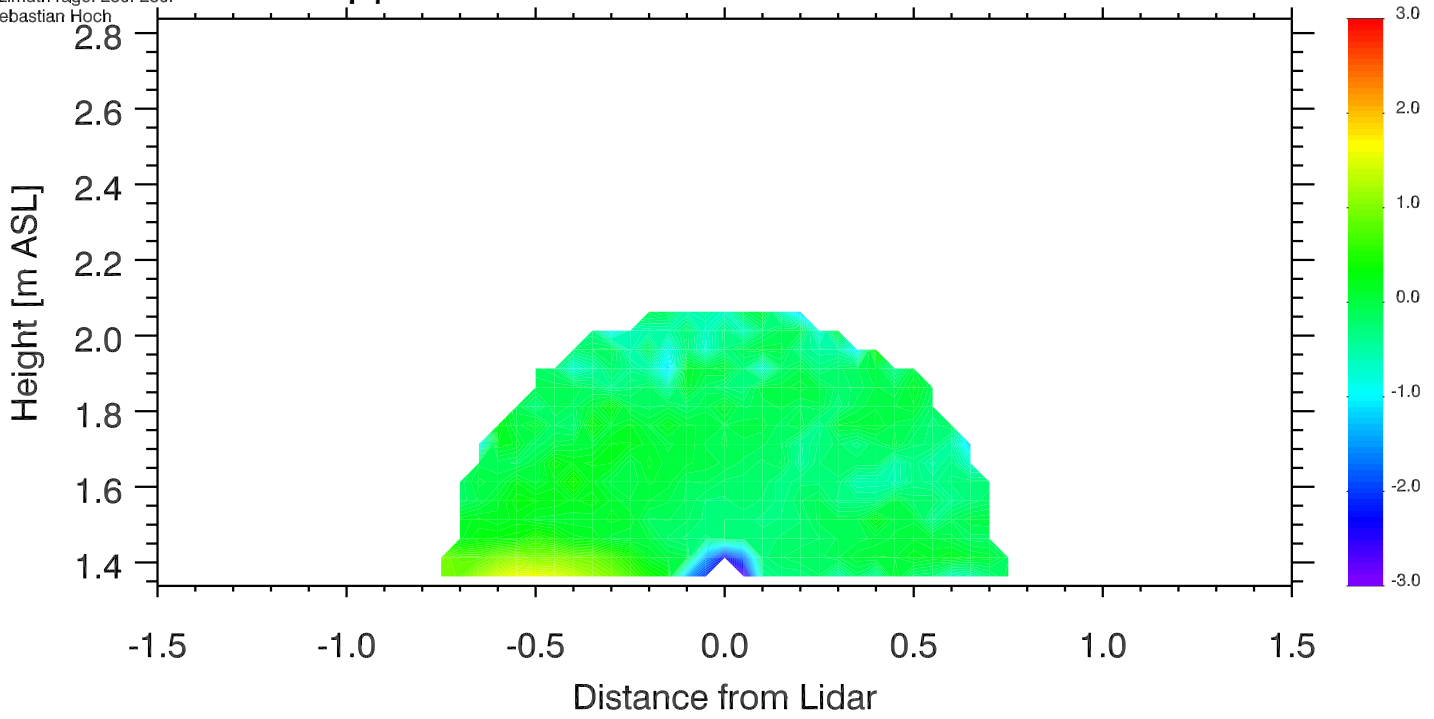
[m s⁻¹]



University of Utah LiDAR, MATERHORN
Elev. angle range: -0.-180.
Azimuth range: 280.-280.
Sebastian Hoch

Doppler Winds 14 Oct 2012 0946-0951 UTC

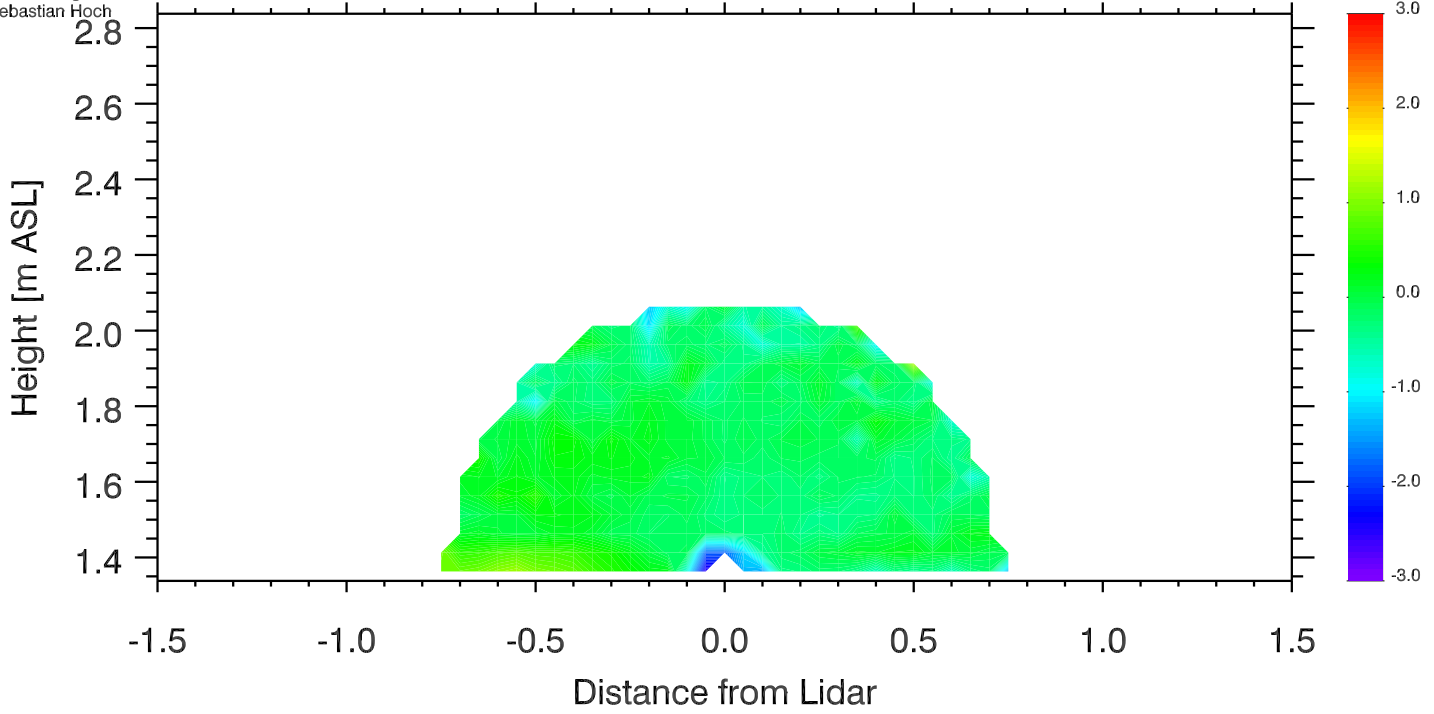
[m s⁻¹]



University of Utah LiDAR, MATERHORN
Elev. angle range: -0.-180.
Azimuth range: 280.-280.
Sebastian Hoch

Doppler Winds 14 Oct 2012 0951-0956 UTC

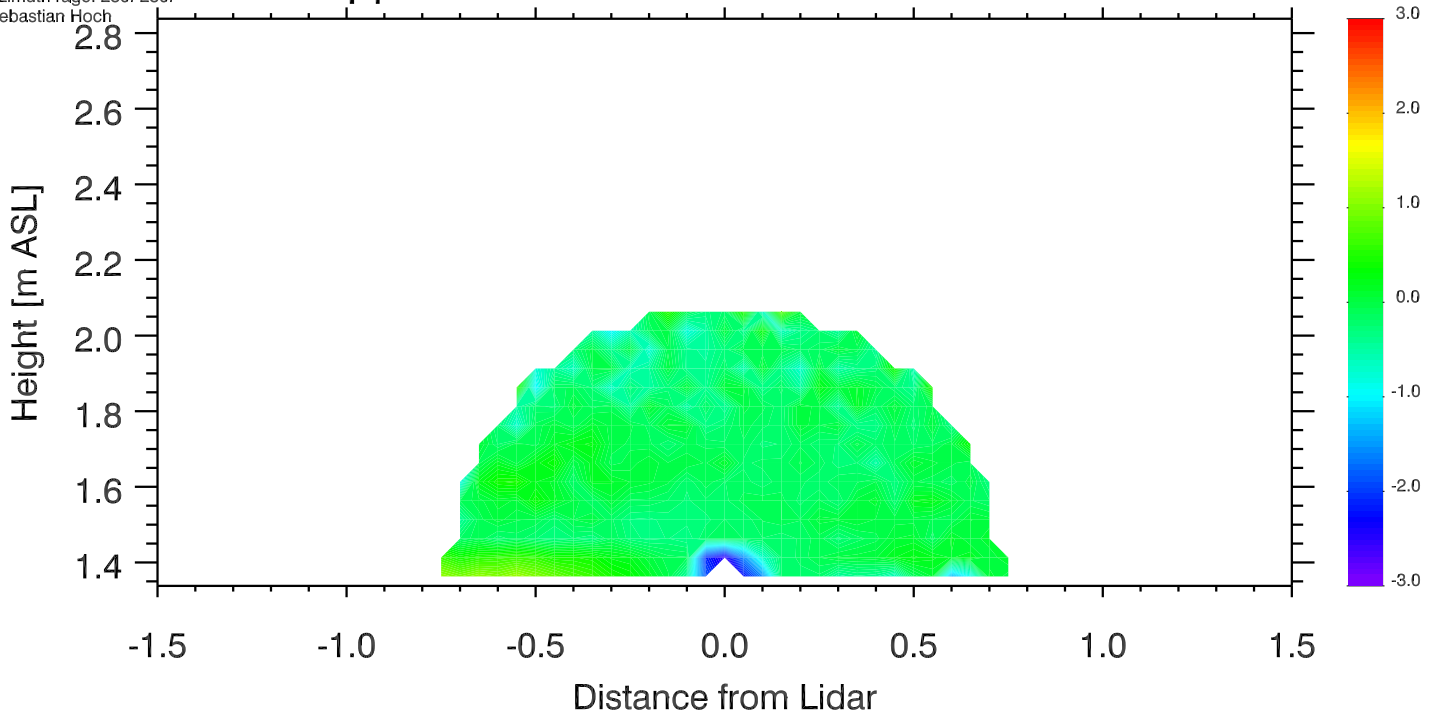
[m s⁻¹]



University of Utah LiDAR, MATERHORN
Elev. angle range: -0.-180.
Azimuth range: 280.-280.
Sebastian Hoch

Doppler Winds 14 Oct 2012 0956-1001 UTC

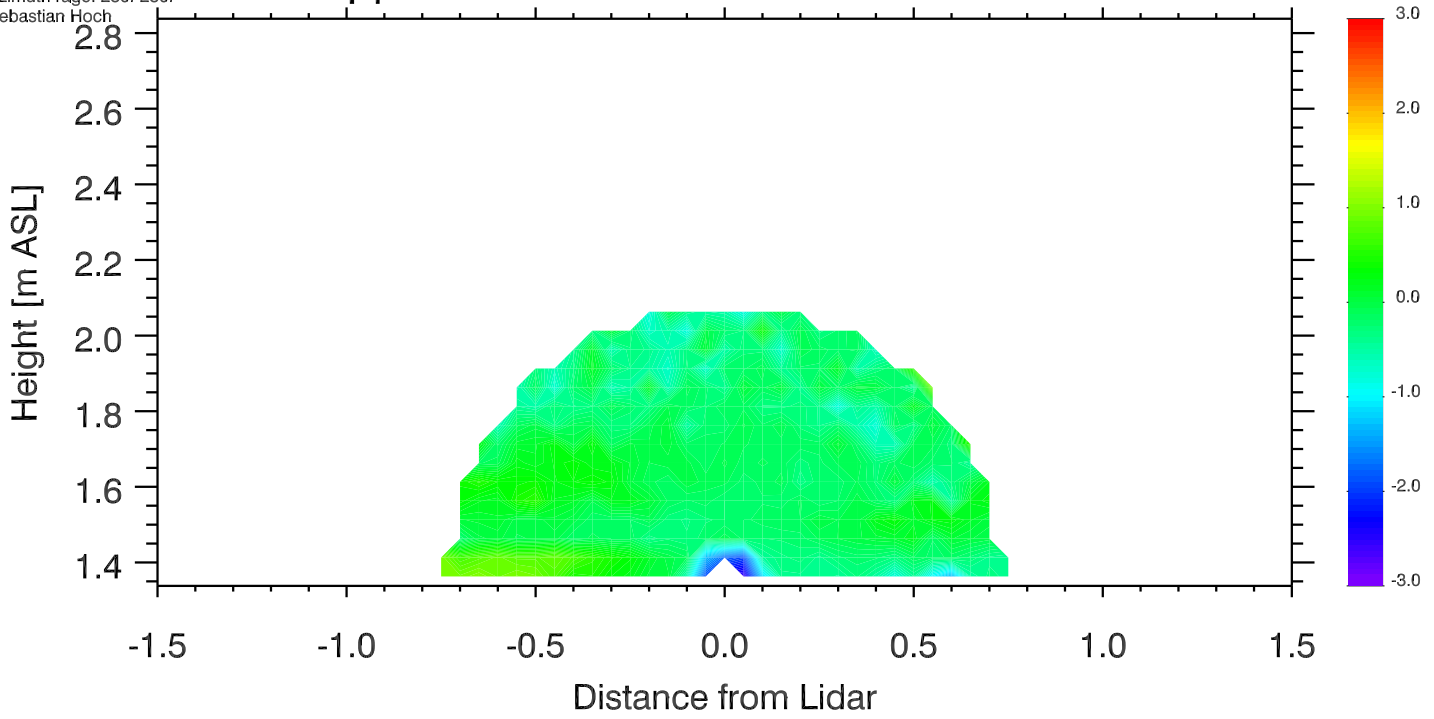
[m s⁻¹]



University of Utah LiDAR, MATERHORN
Elev. angle range: -0.-180.
Azimuth range: 280.-280.
Sebastian Hoch

Doppler Winds 14 Oct 2012 1001-1006 UTC

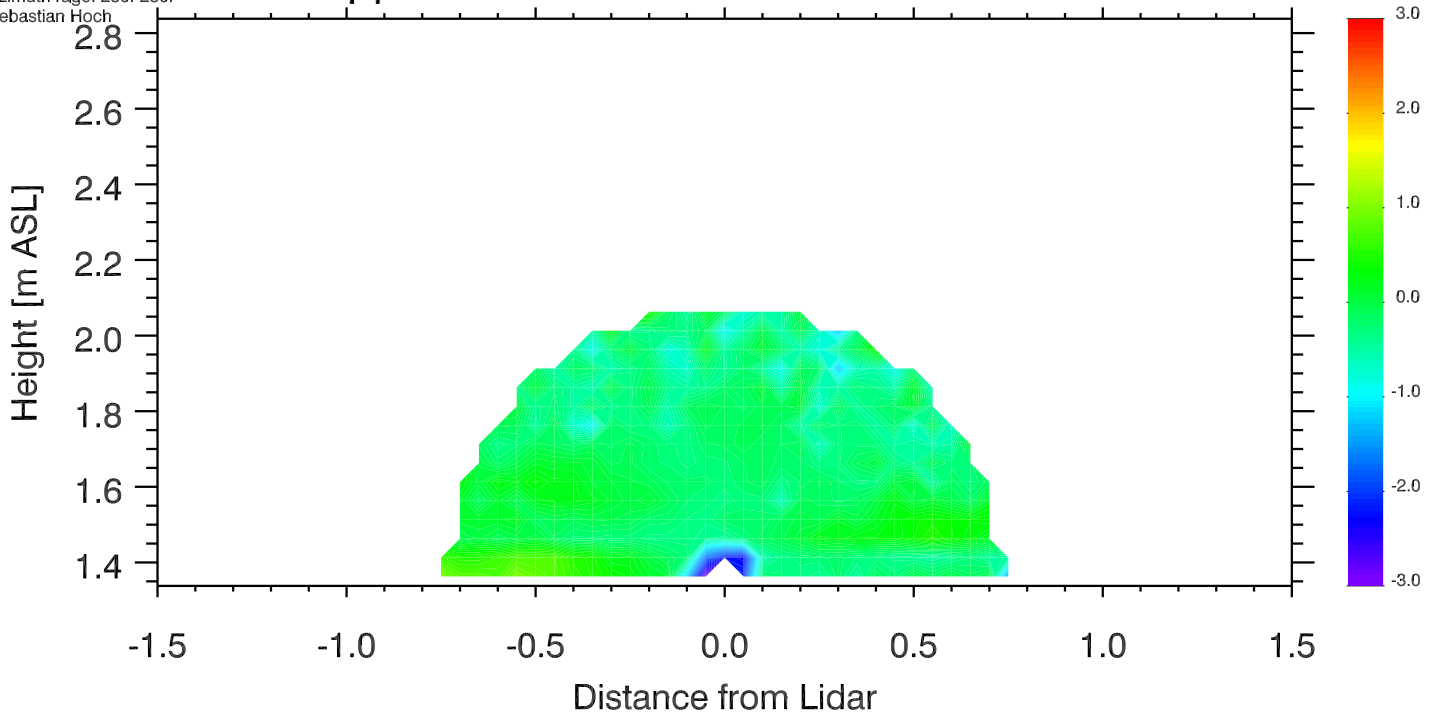
[m s⁻¹]



University of Utah LiDAR, MATERHORN
Elev. angle range: -0.-180.
Azimuth range: 280.-280.
Sebastian Hoch

Doppler Winds 14 Oct 2012 1006-1011 UTC

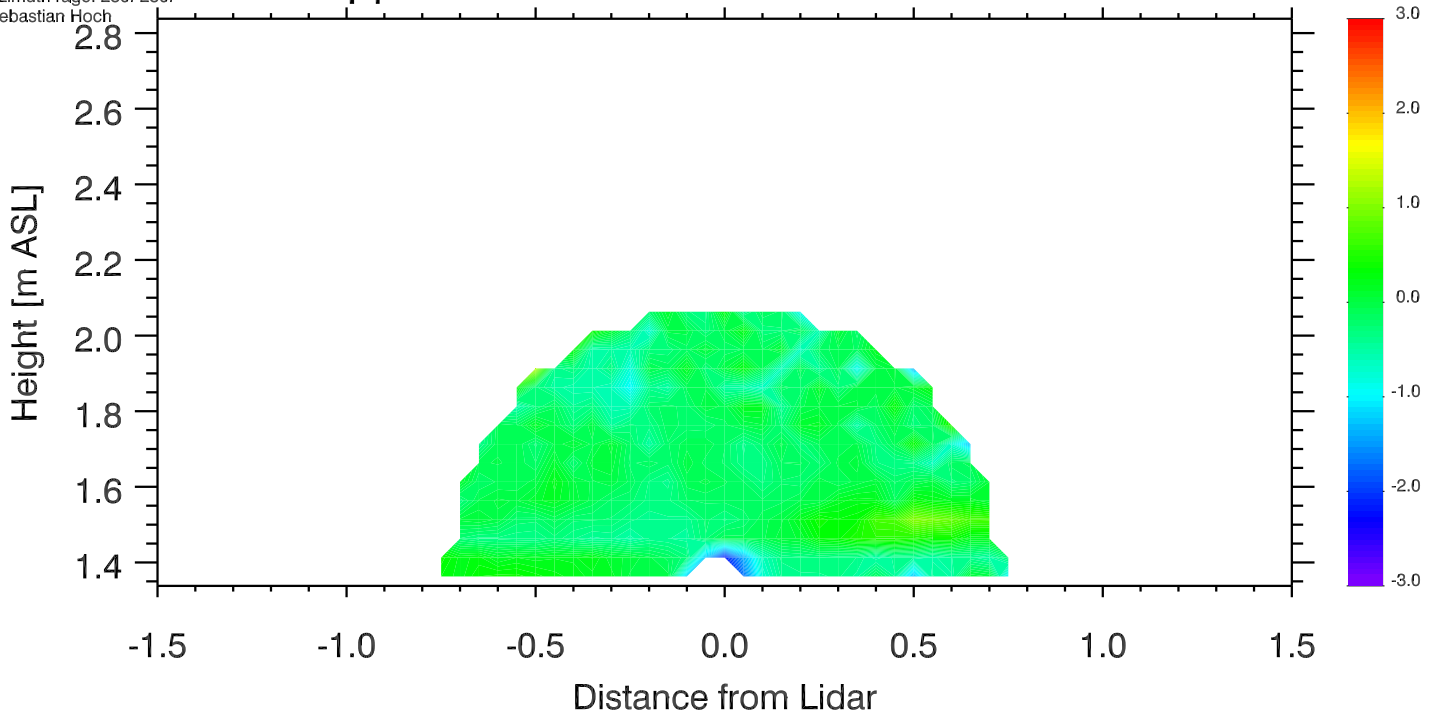
[m s⁻¹]



University of Utah LiDAR, MATERHORN
Elev. angle range: -0.-180.
Azimuth range: 280.-280.
Sebastian Hoch

Doppler Winds 14 Oct 2012 1011-1016 UTC

[m s⁻¹]



University of Utah LiDAR, MATERHORN
Elev. angle range: -0.-180.
Azimuth range: 280.-280.
Sebastian Hoch

Doppler Winds 14 Oct 2012 1016-1017 UTC

[m s⁻¹]

