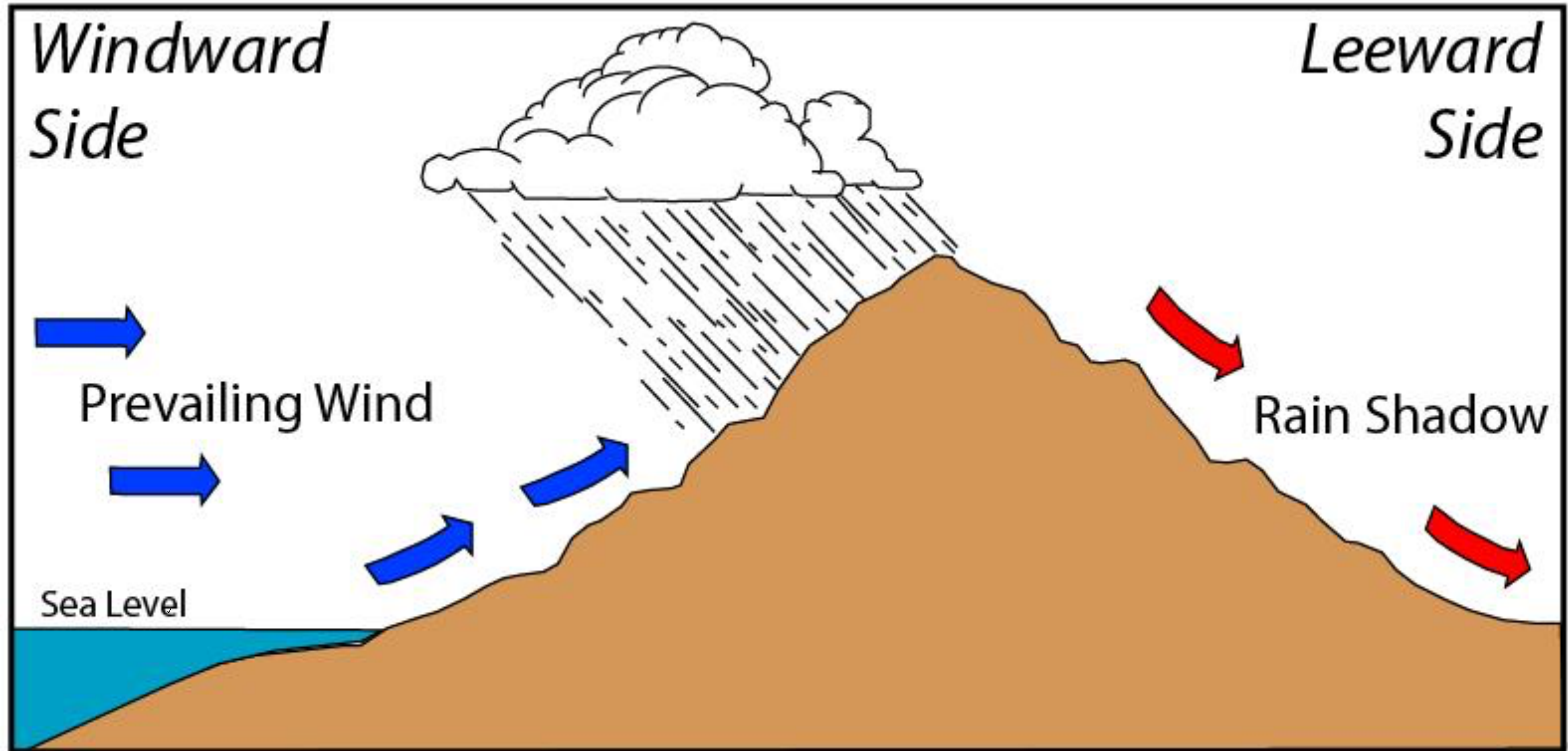


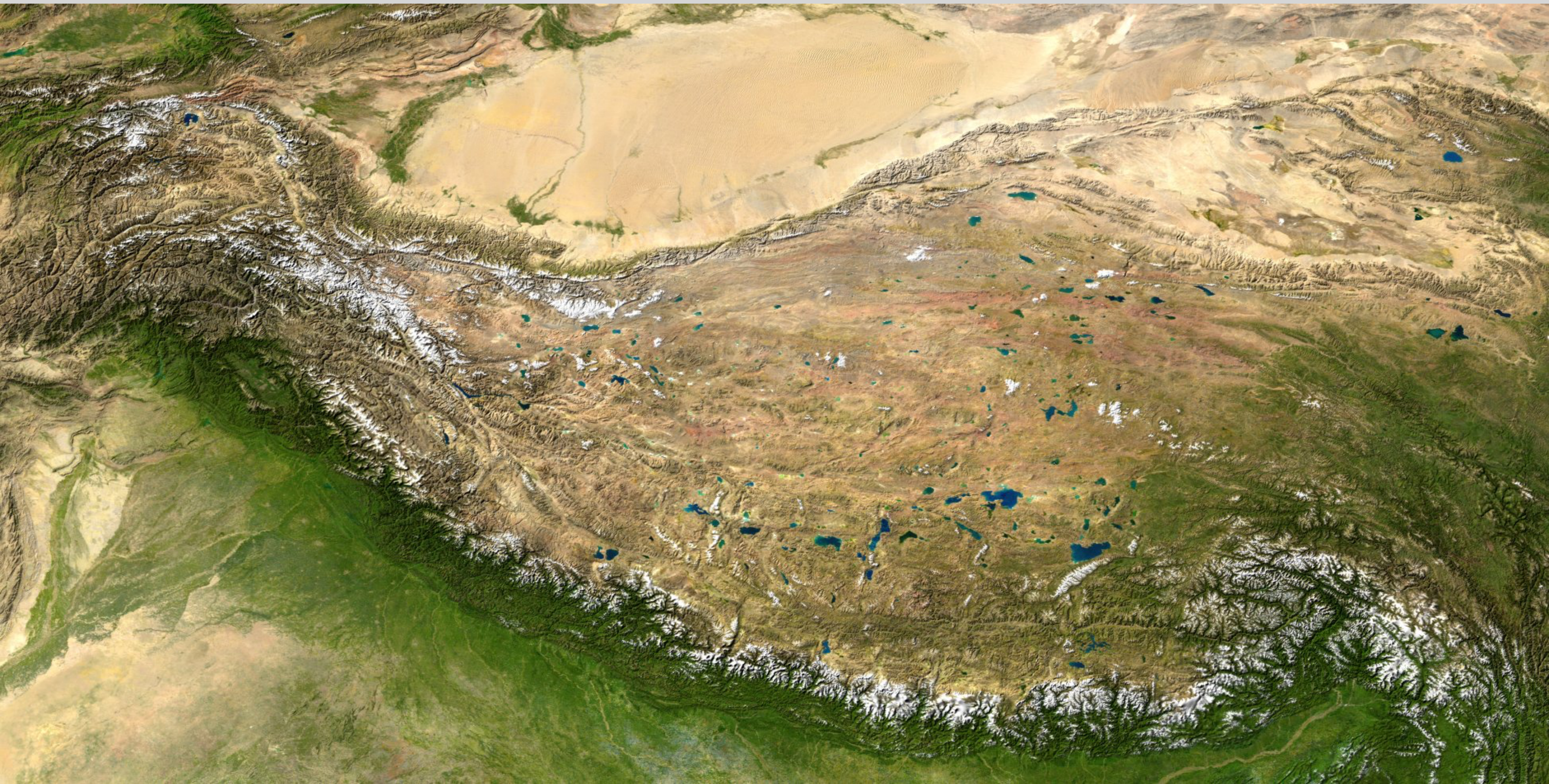
What are the features of a rain shadow?

# Rain Shadow

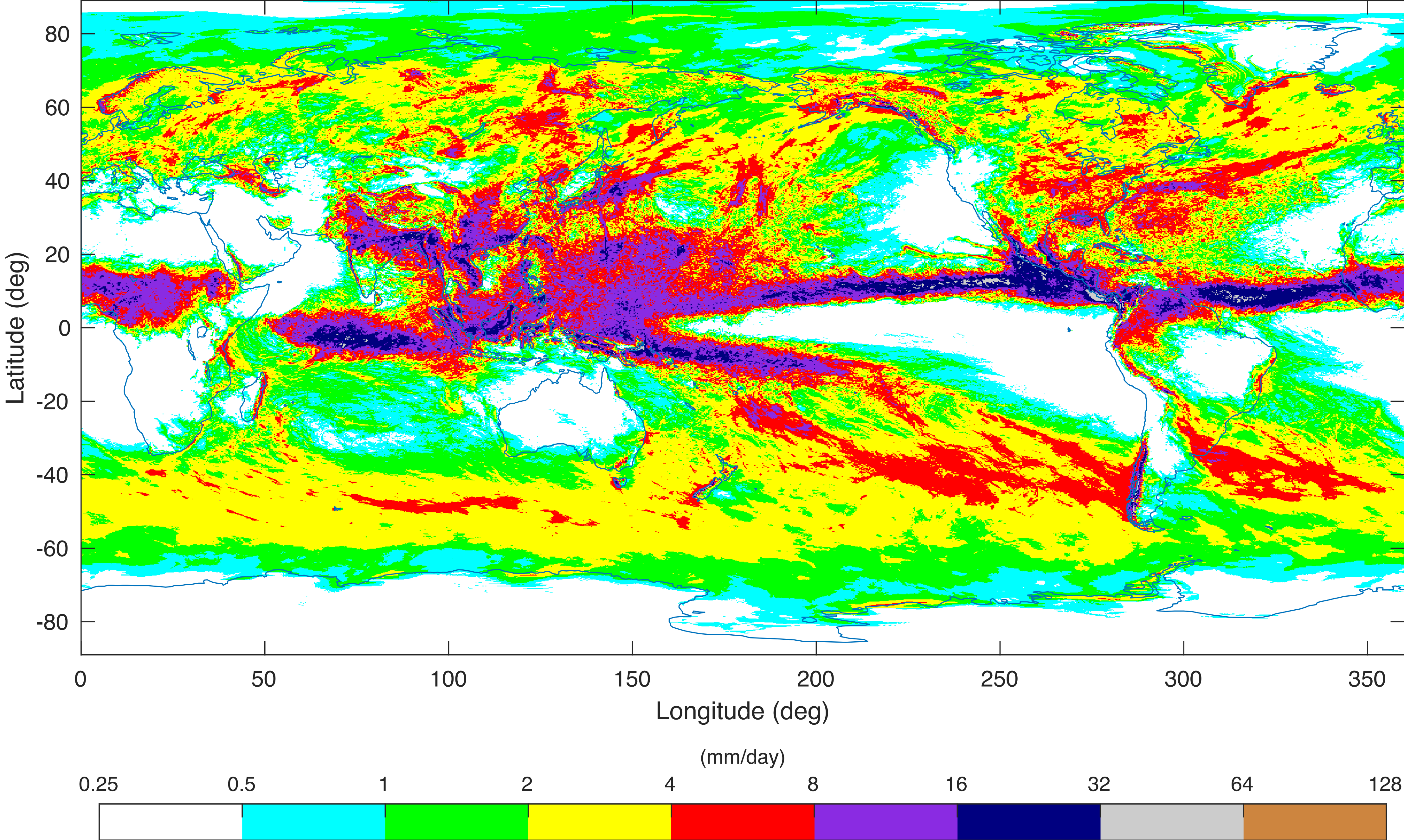
What determines the intensity of a rain shadow?



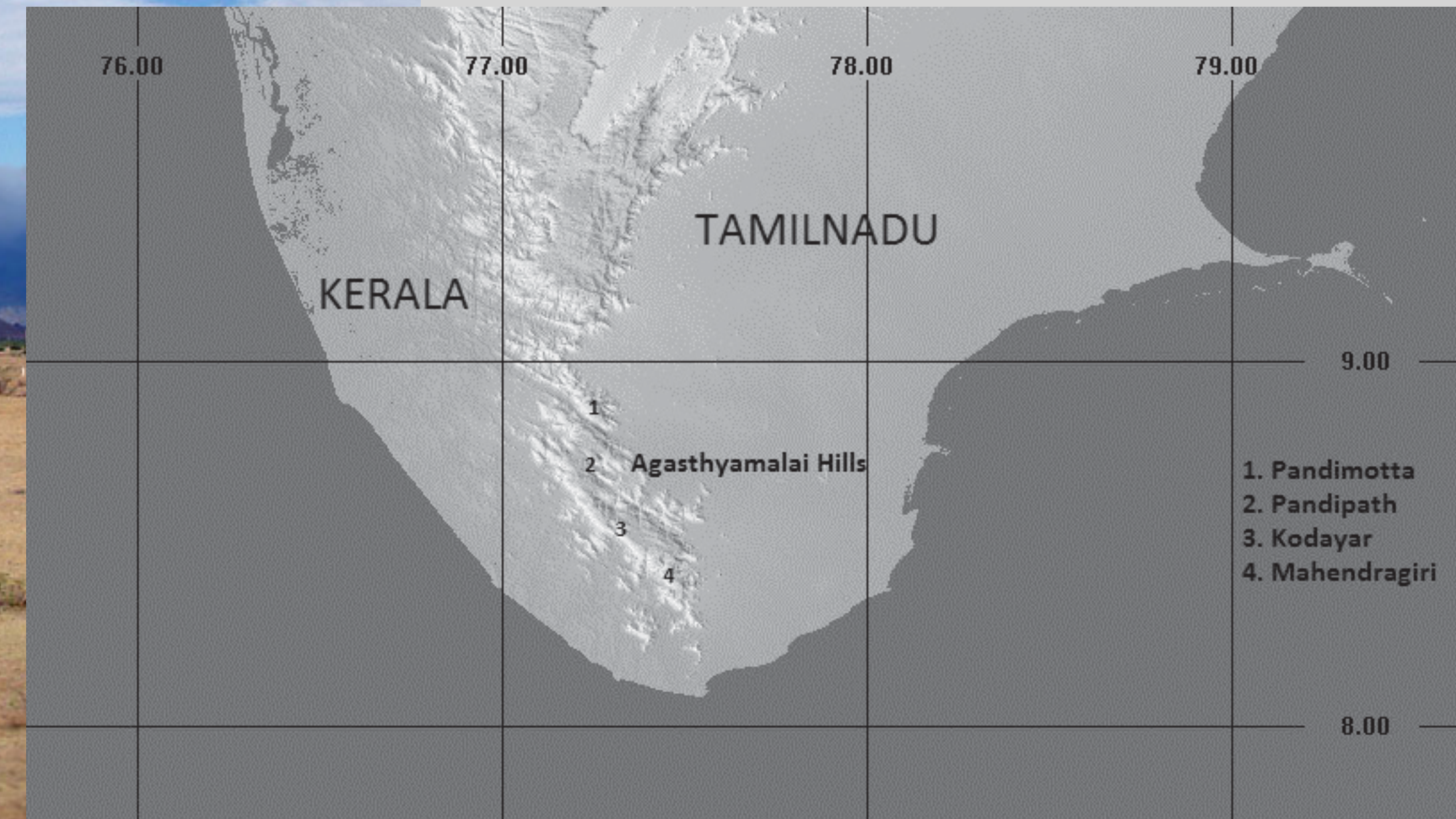
Where are some rain shadows located around the world?



Global SAM Average Precipitation Rate (16 km, 40 days)

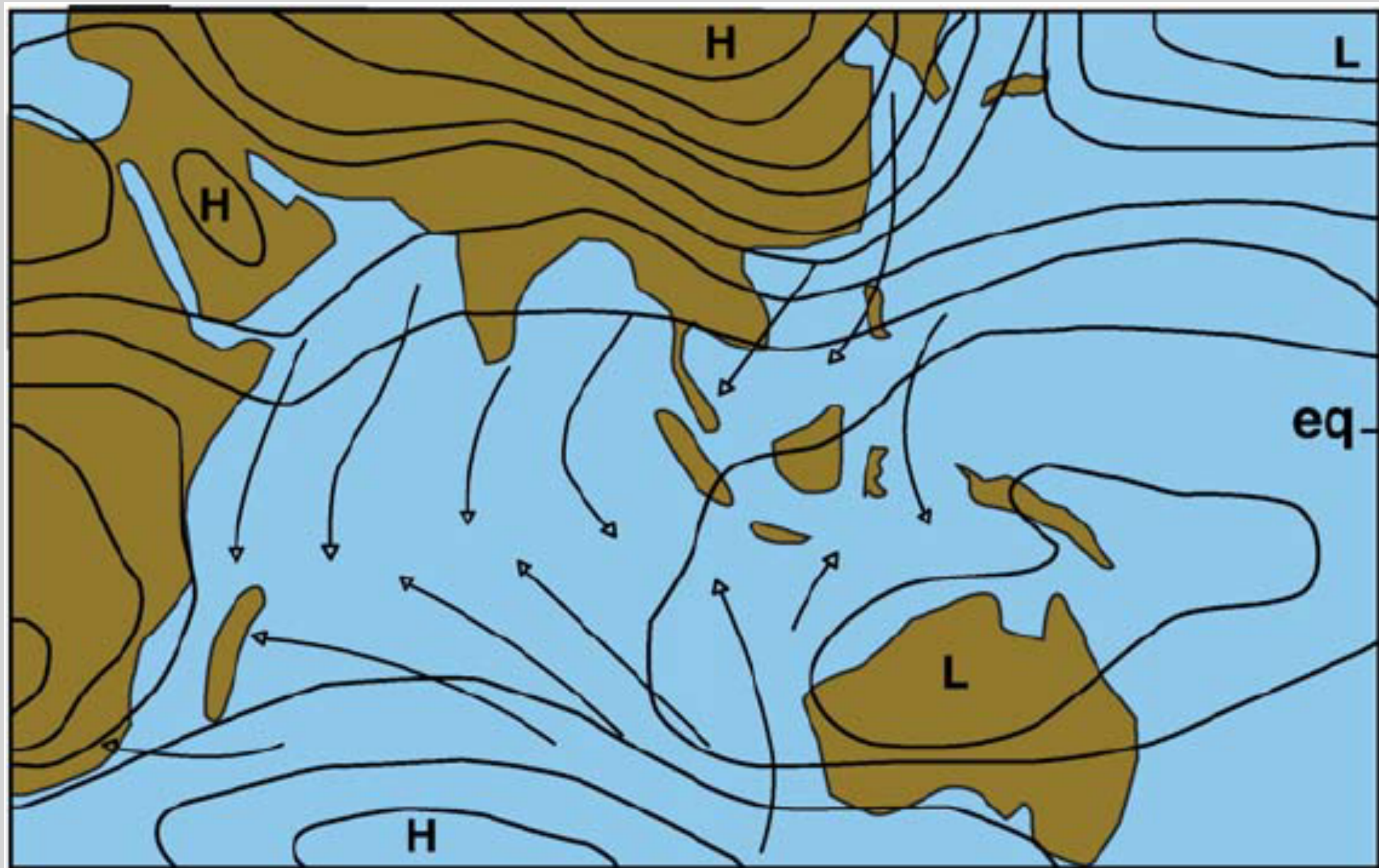


The [Agasthiyamalai hills](#) cut off [Tirunelveli \(India\)](#) from the [monsoons](#)



***Austral winter:***  
**(Global precip map)**  
**Madagascar**  
**Patagonia**  
**New Zealand**

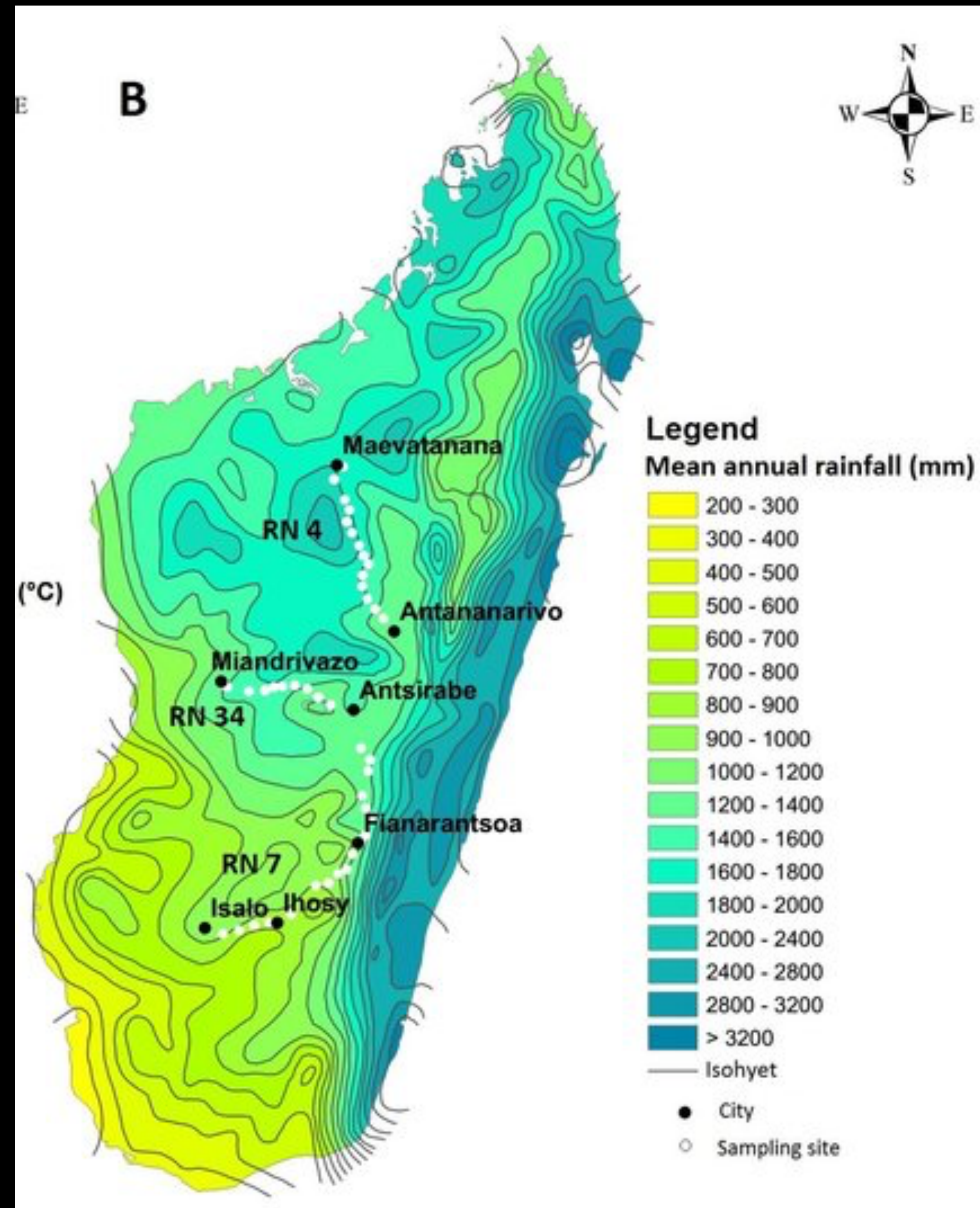
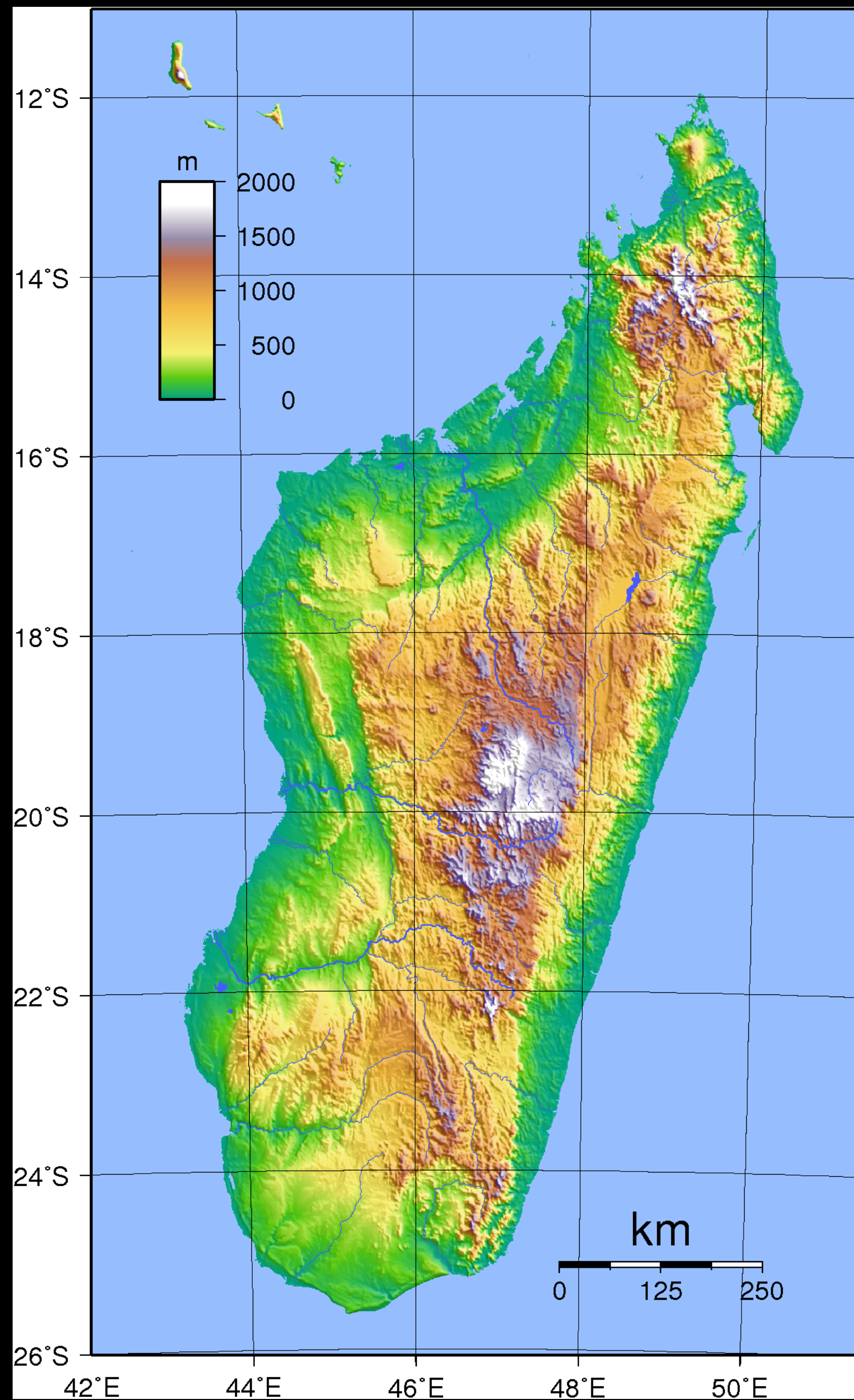
***Boreal winter:***  
**Sequim**



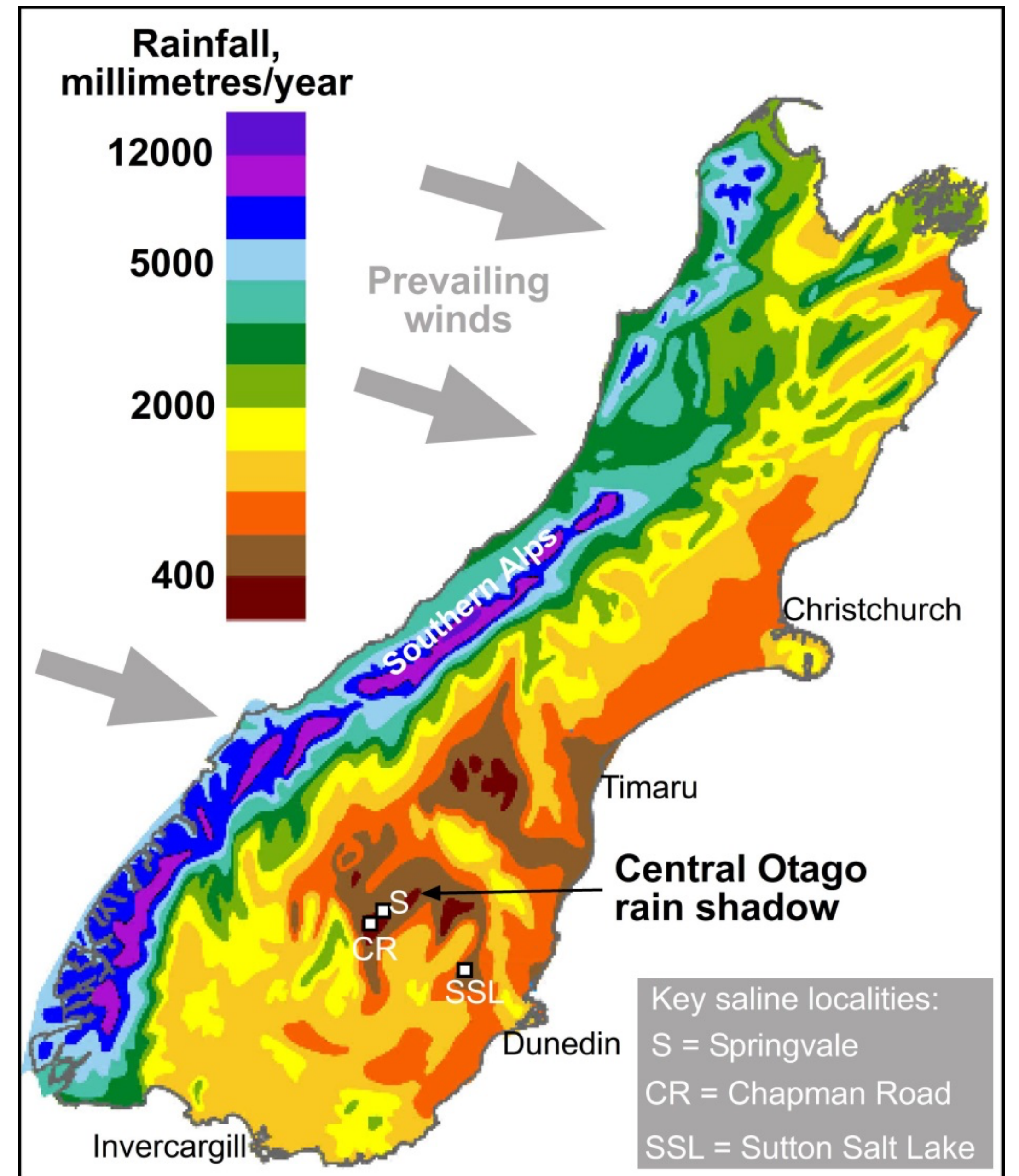
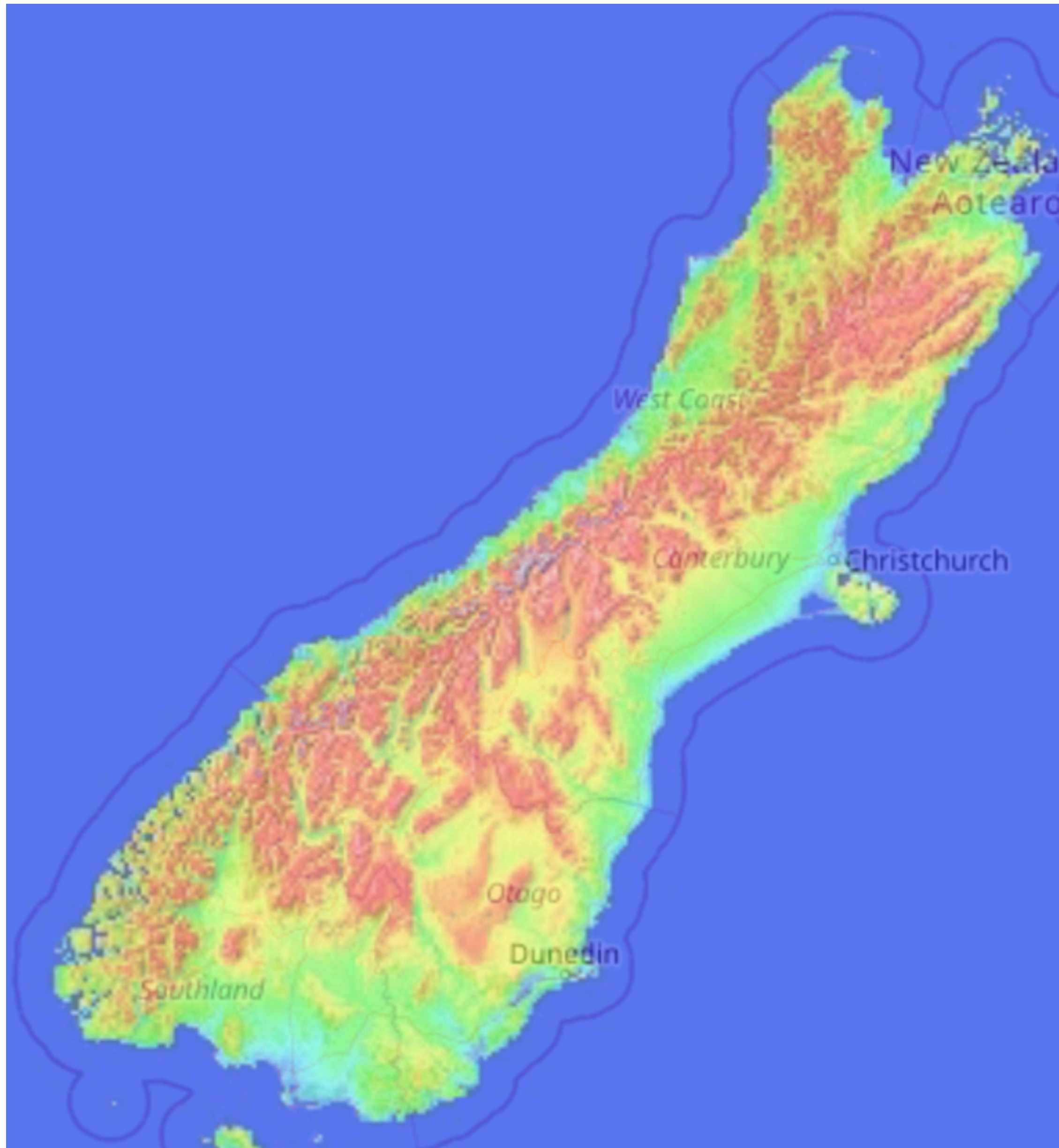
January



July

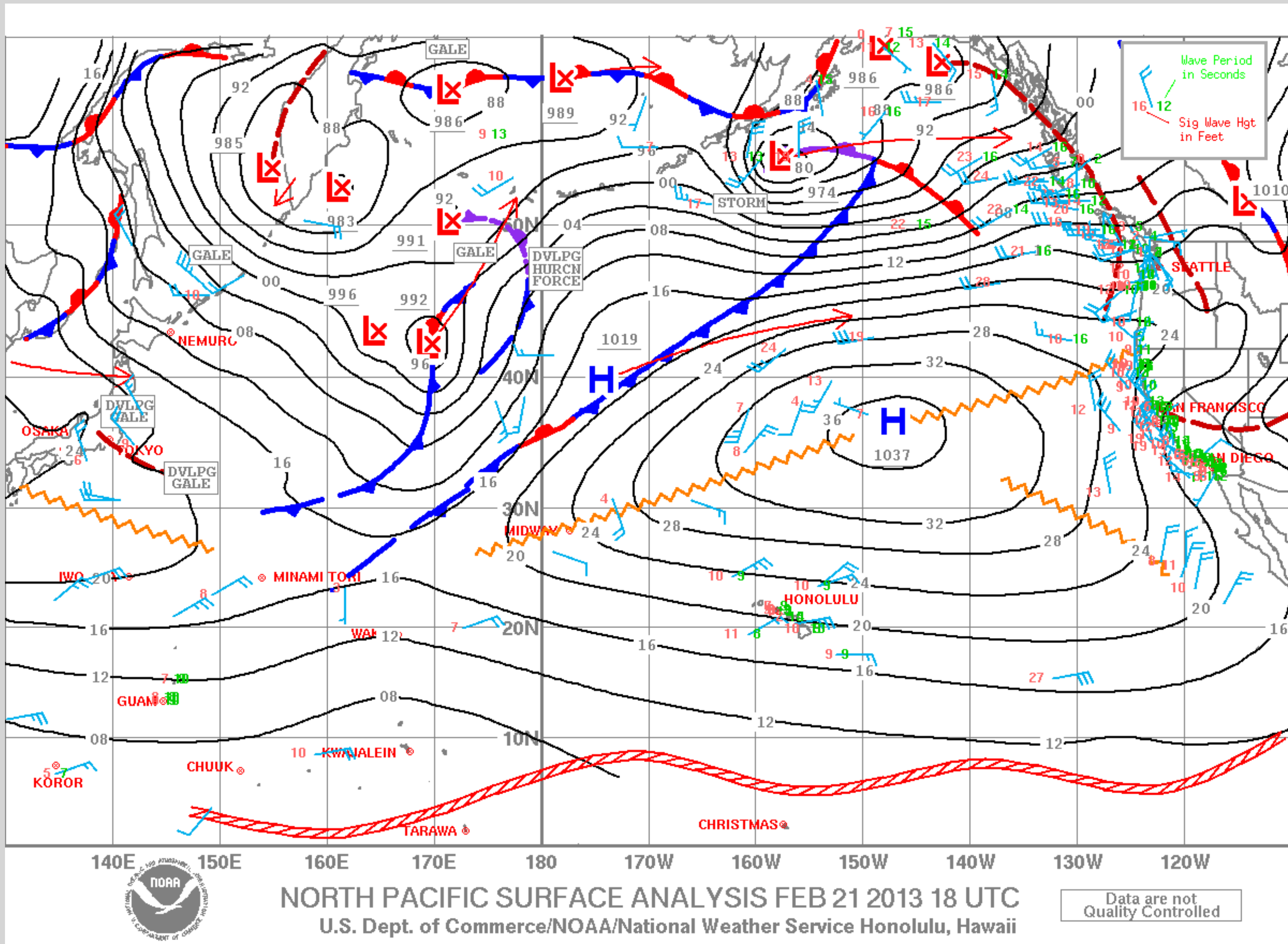


# New Zealand, South Island





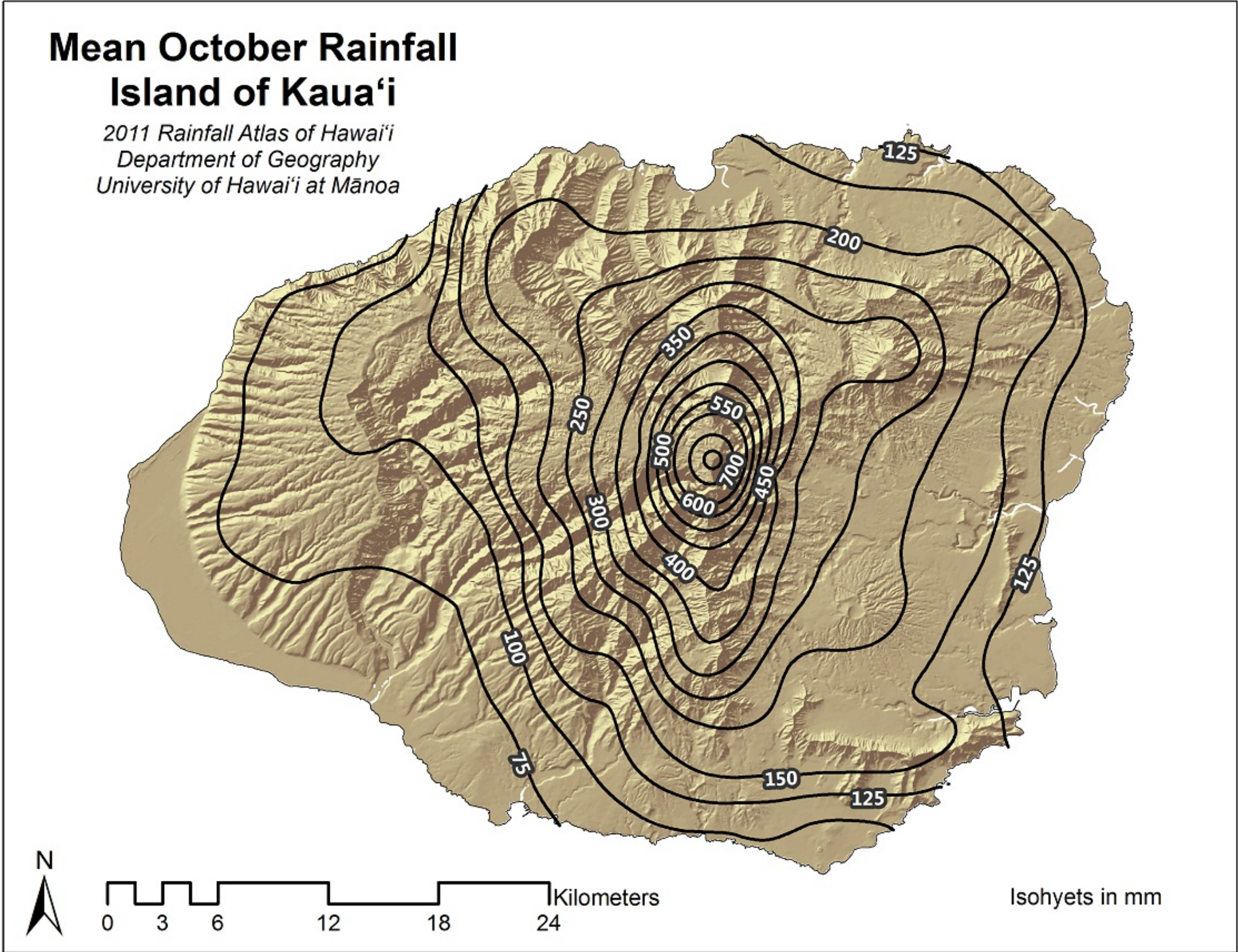
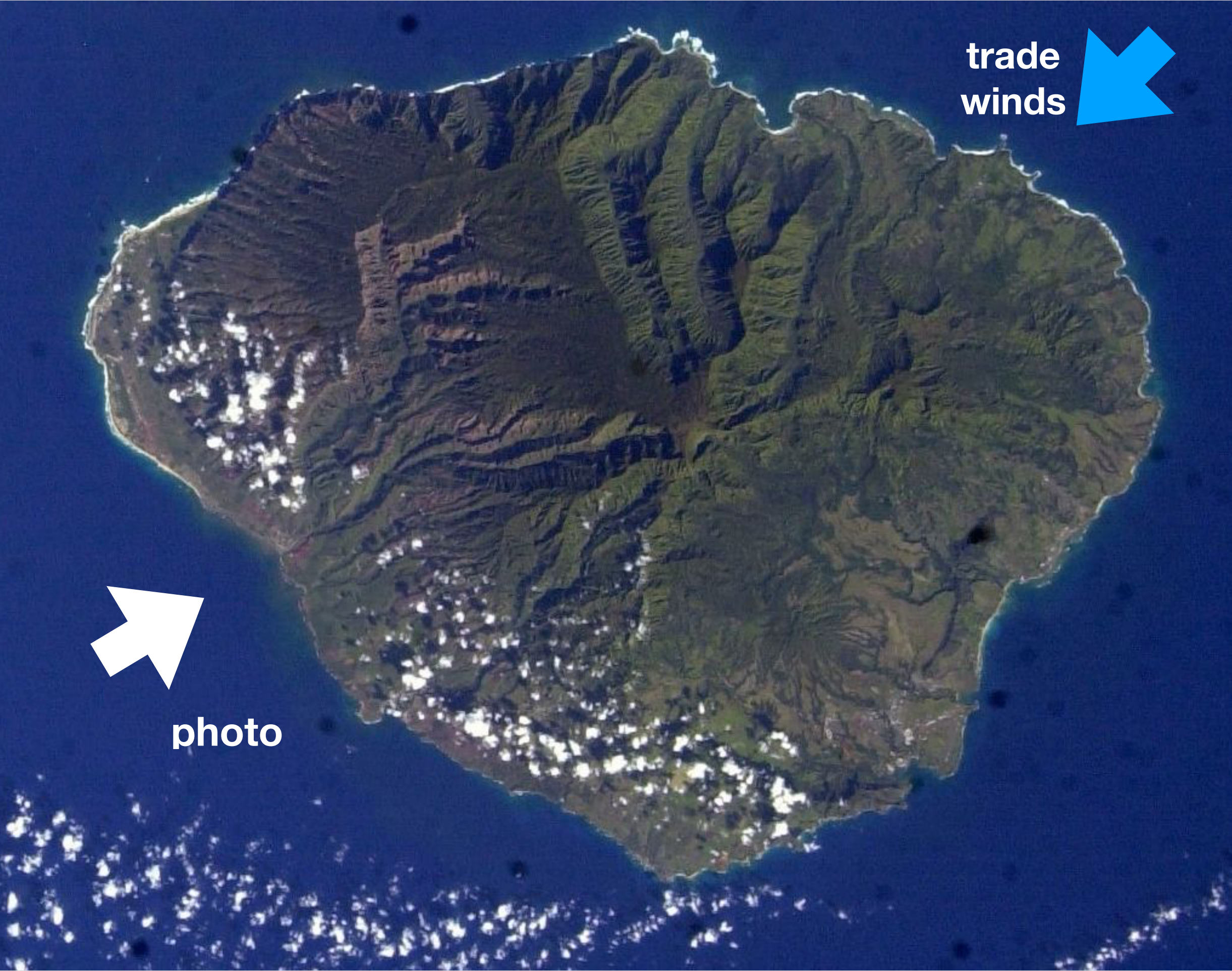
# Hawaii and the trade winds



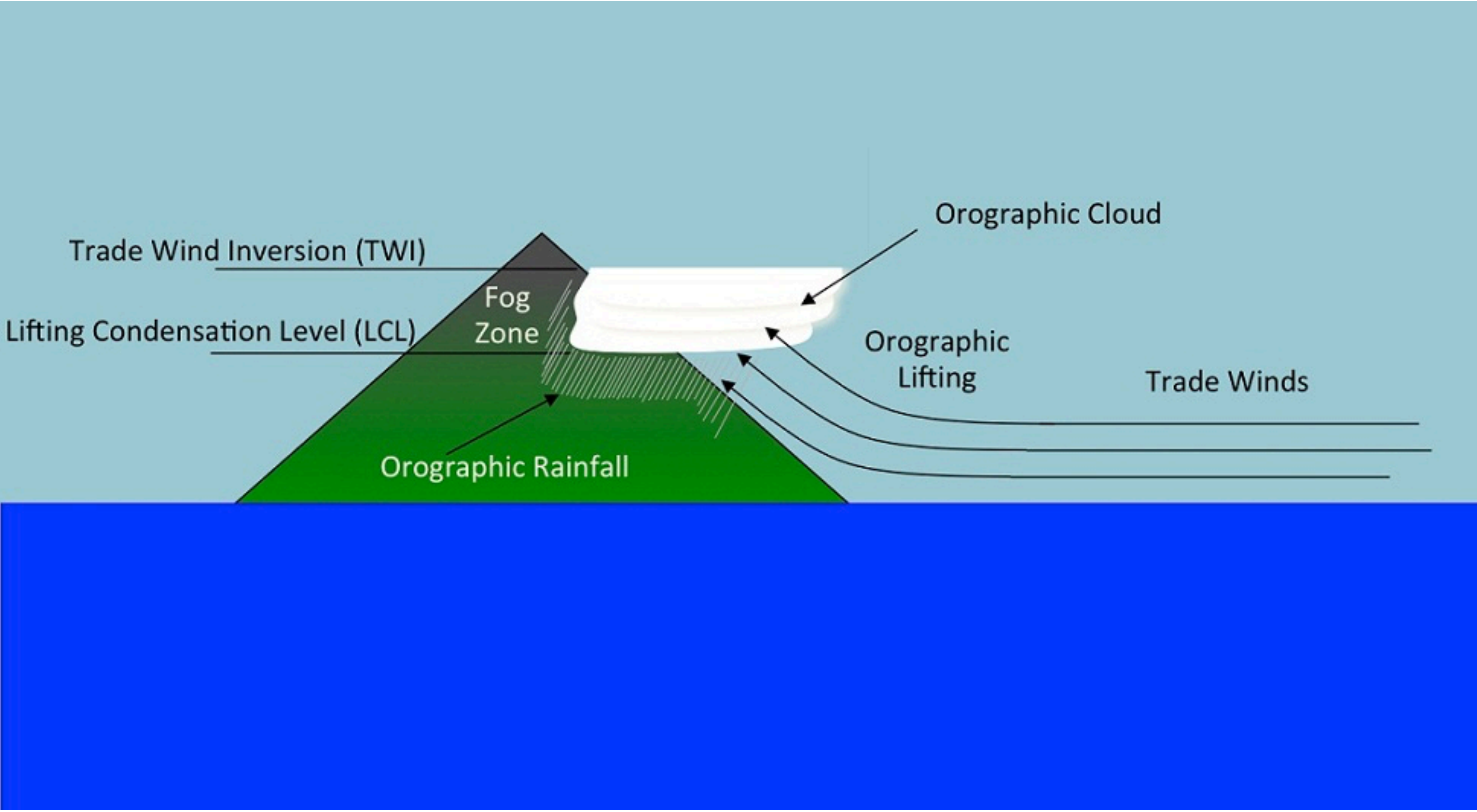
**Kauai from the southwest**



# Kauai

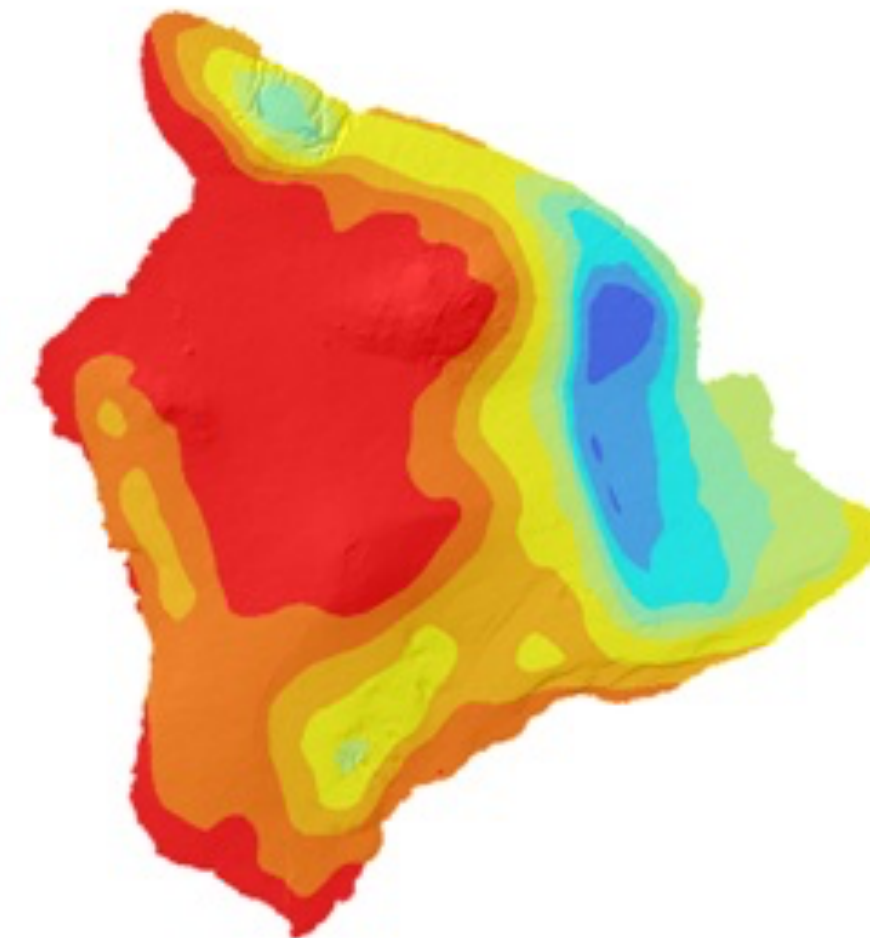
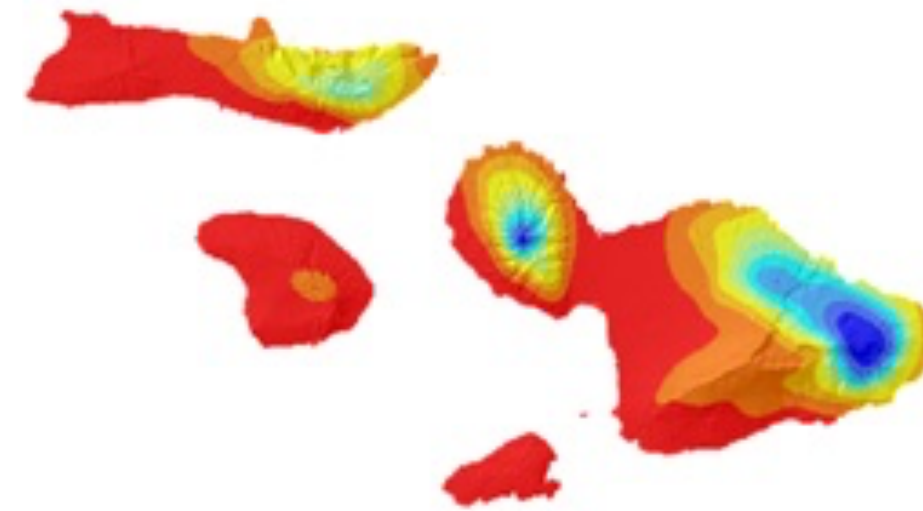
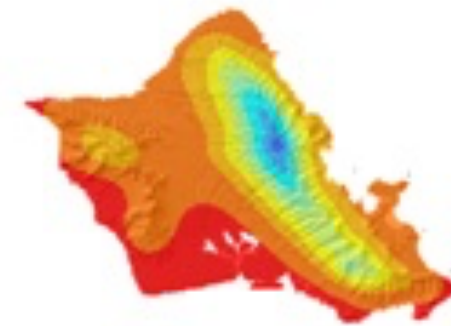
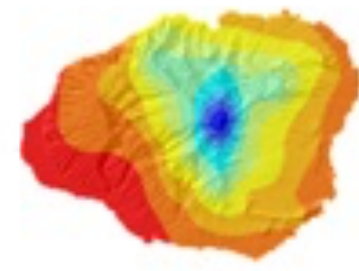


# Hawai'i's Rainfall Patterns

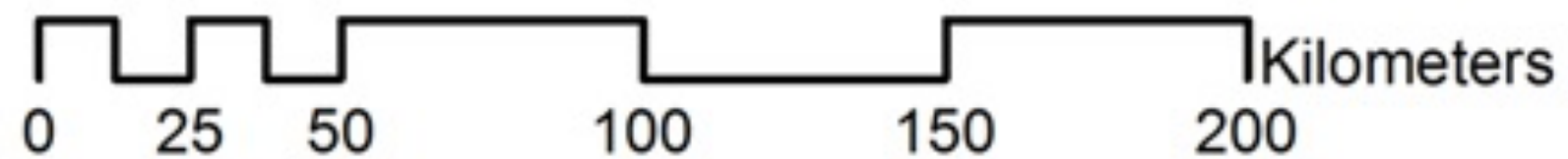
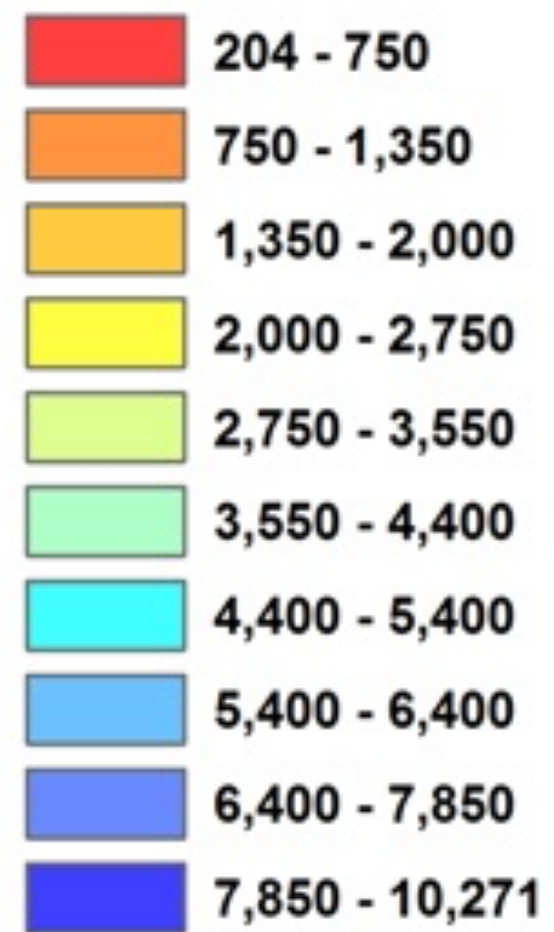


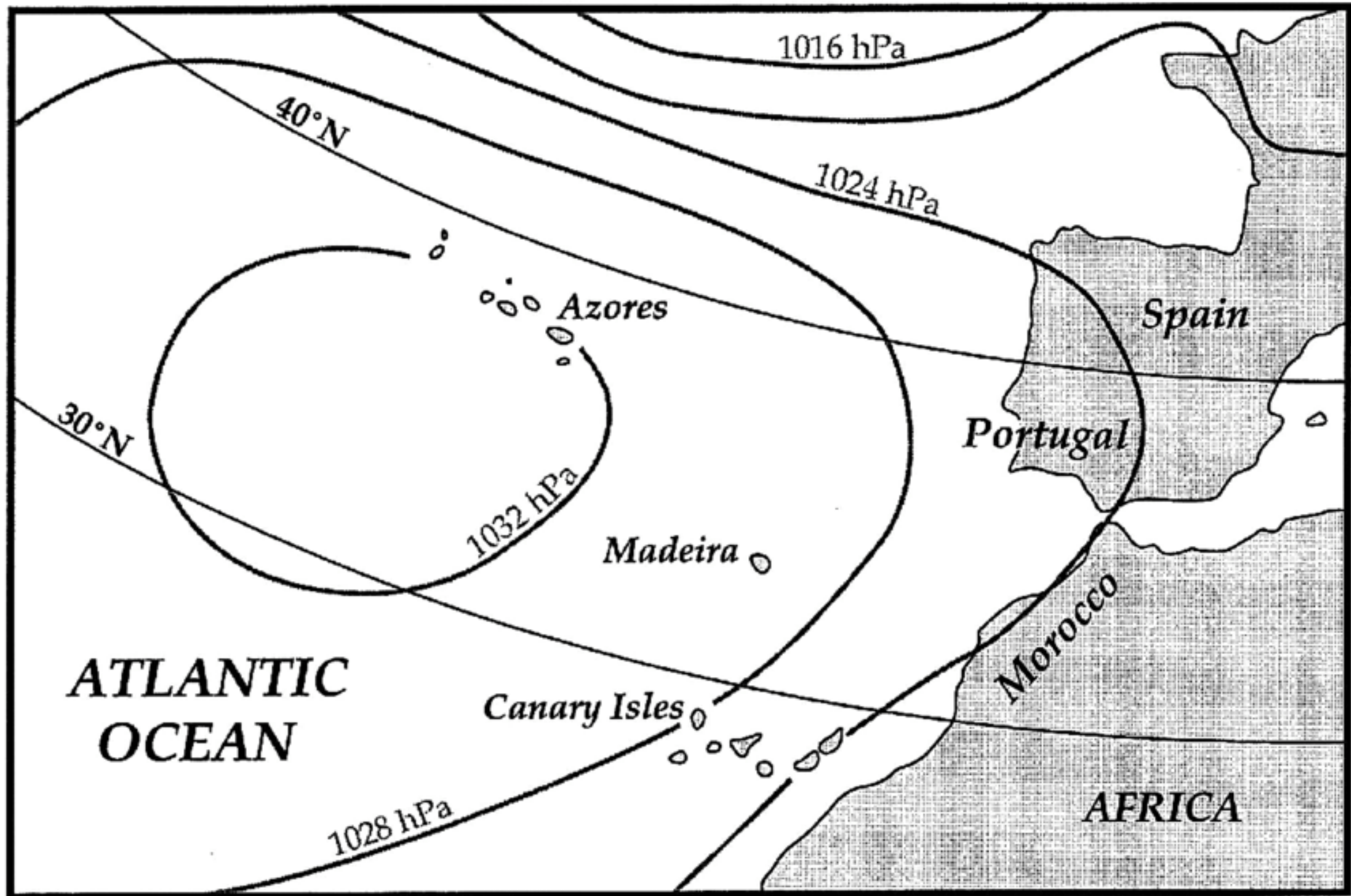
# Mean Annual Rainfall State of Hawai'i

*2013 Rainfall Atlas of Hawai'i*  
Department of Geography, University of Hawai'i at Mānoa



## Annual Rainfall (mm)





Tenerife, Canary Islands, has a laurisilva forest where the rain shadow effect is not present.







## Fog forest



Hiker in Laurisilva forest in Anaga Rural park on Tenerife, Canary Islands, Spain



# Sequim Rain Shadow

