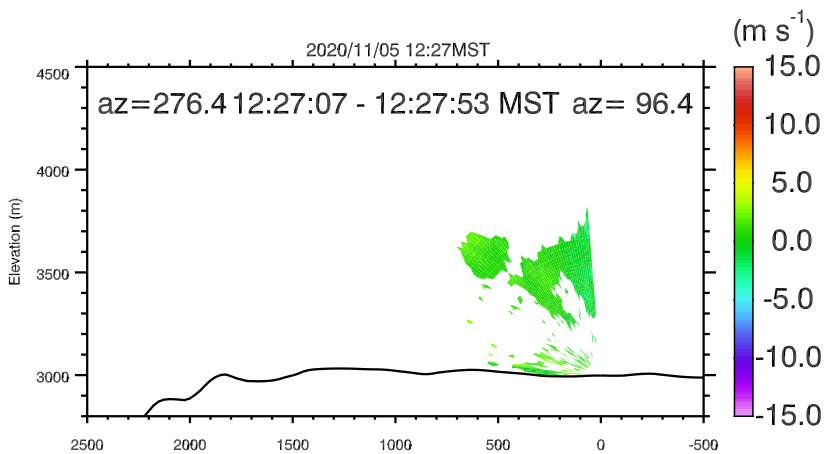
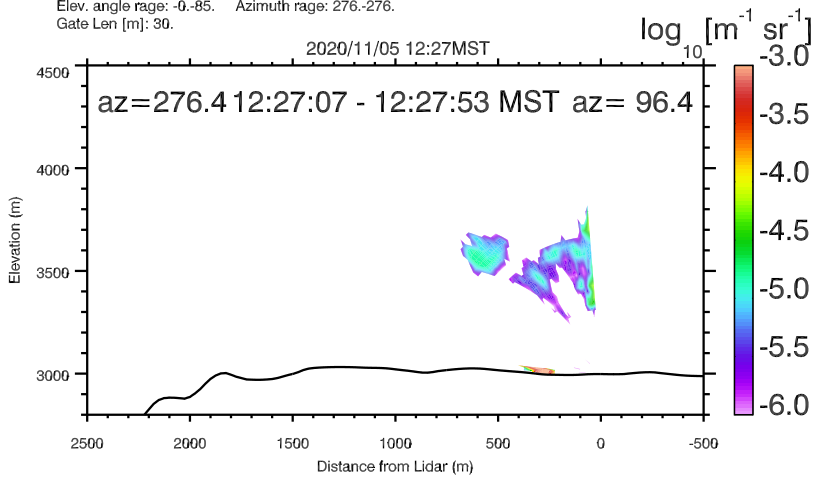
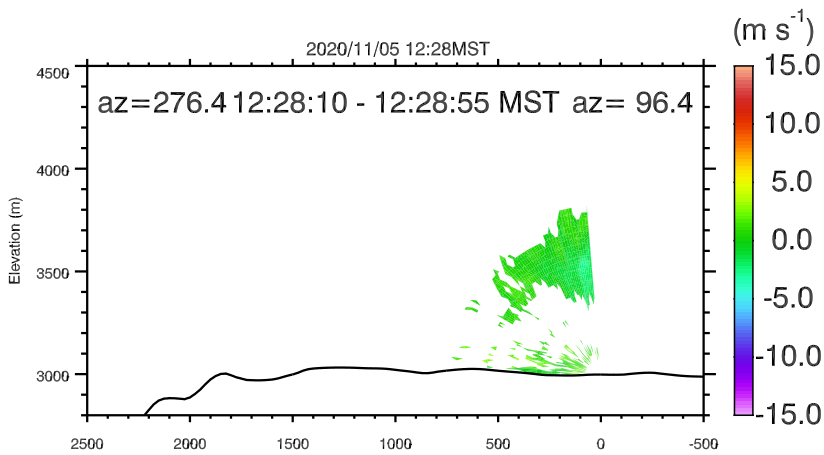
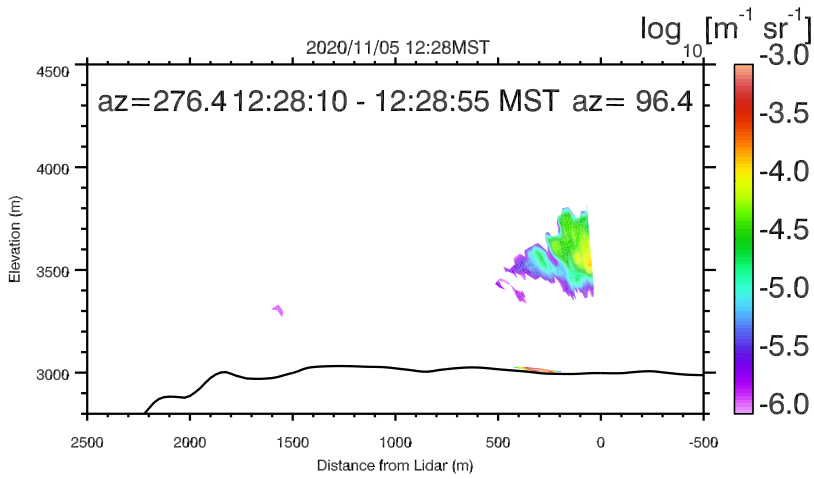


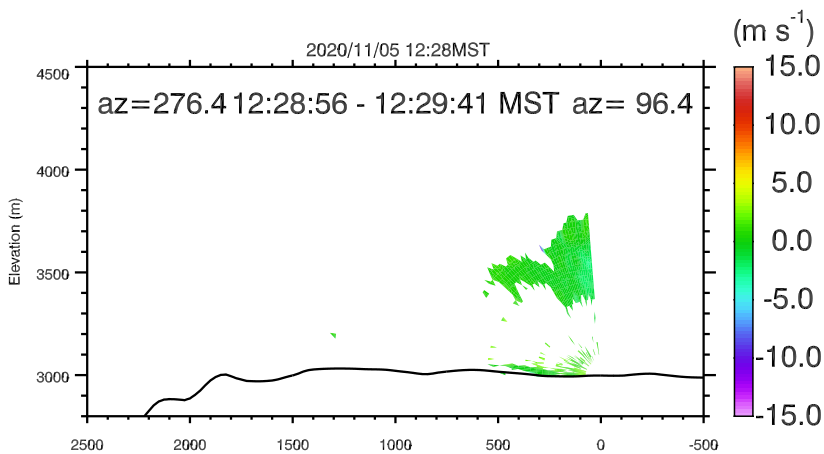
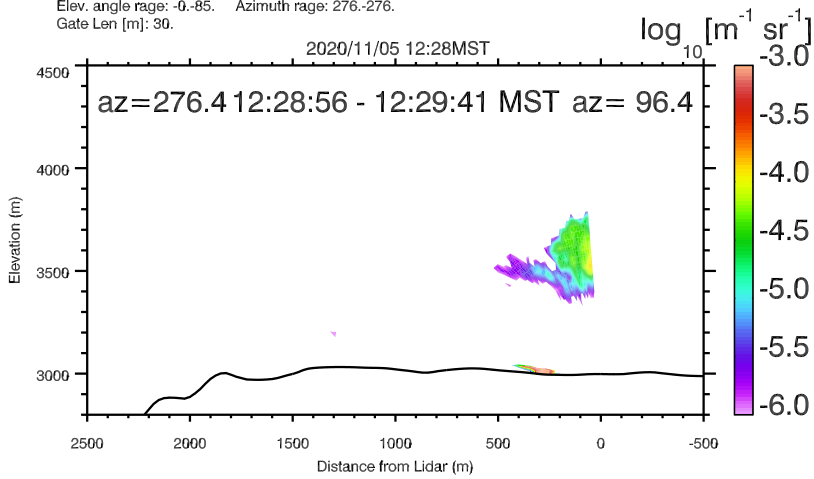
UNR LIDAR - FASMEE/ANNABELLA [Sebastian Hoch]
 Elev. angle range: -0.-85. Azimuth range: 276.-276.
 Gate Len [m]: 30.



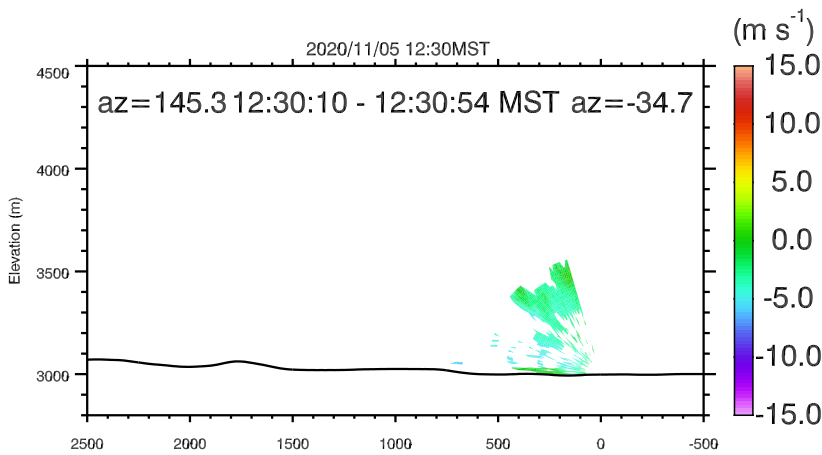
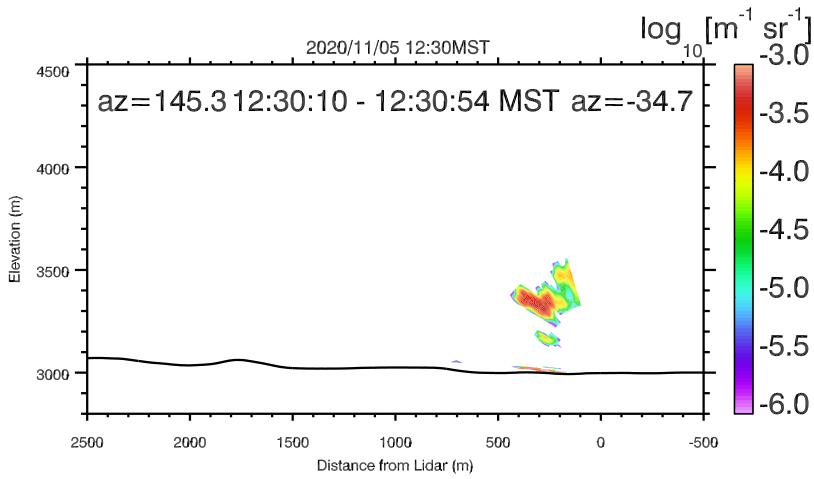
UNR LIDAR - FASMEE/ANNABELLA [Sebastian Hoch]
 Elev. angle range: -0.-85. Azimuth range: 276.-276.
 Gate Len [m]: 30.



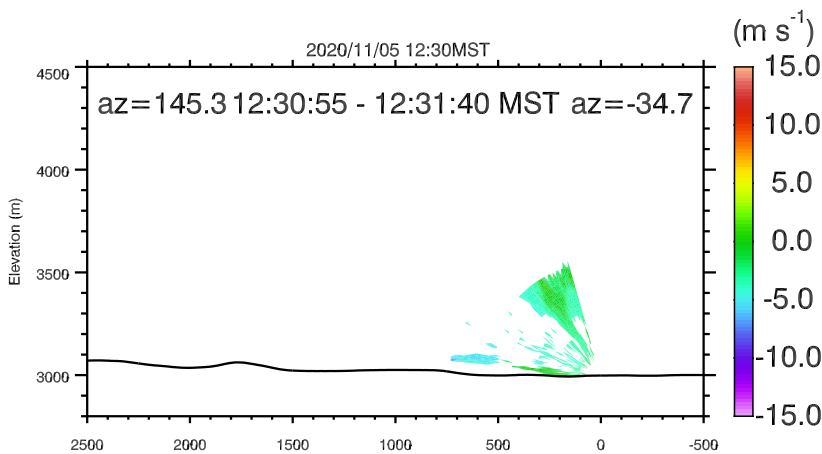
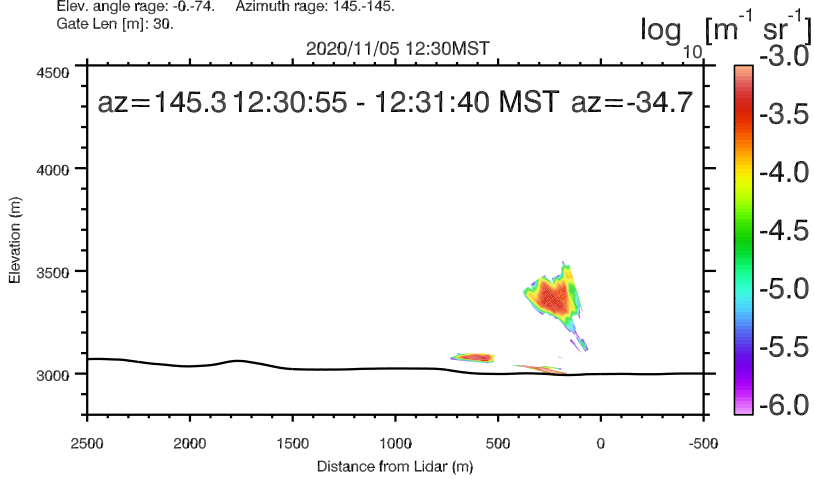
UNR LIDAR - FASMEE/ANNABELLA [Sebastian Hoch]
 Elev. angle range: -0.-85. Azimuth range: 276.-276.
 Gate Len [m]: 30.



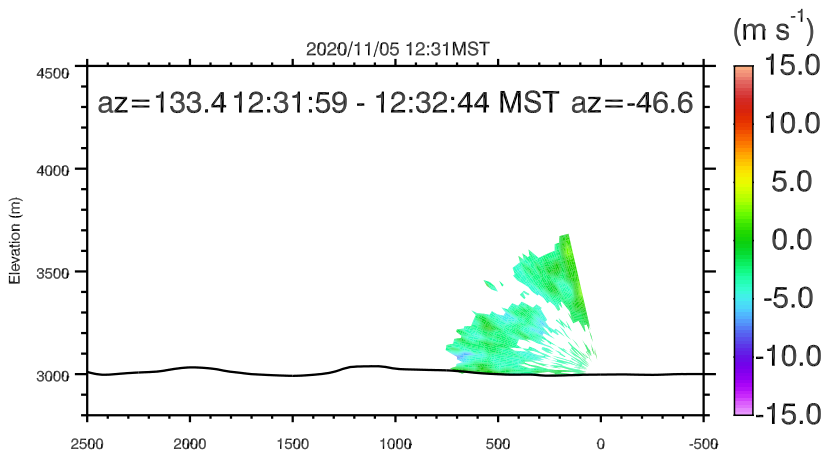
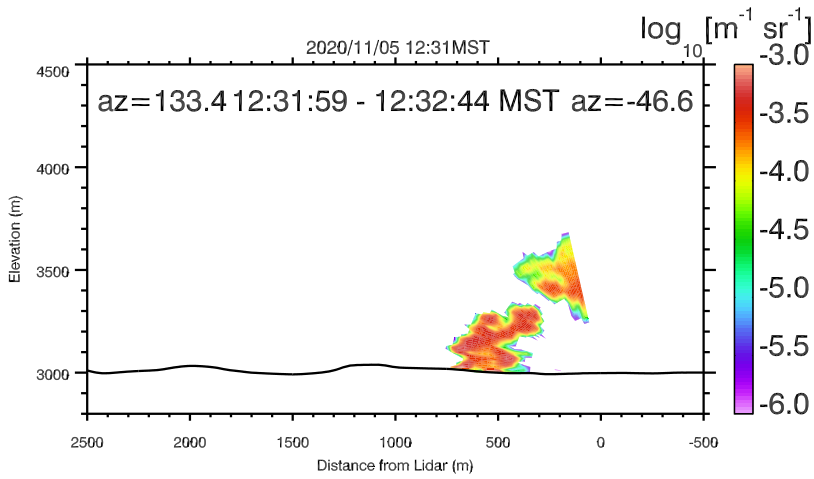
UNR LIDAR - FASMEE/ANNABELLA [Sebastian Hoch]
 Elev. angle range: -0.-85. Azimuth range: 276.-276.
 Gate Len [m]: 30.



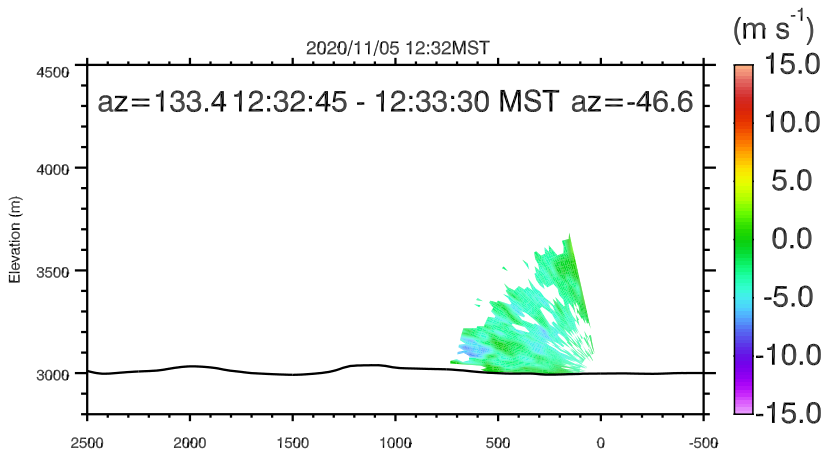
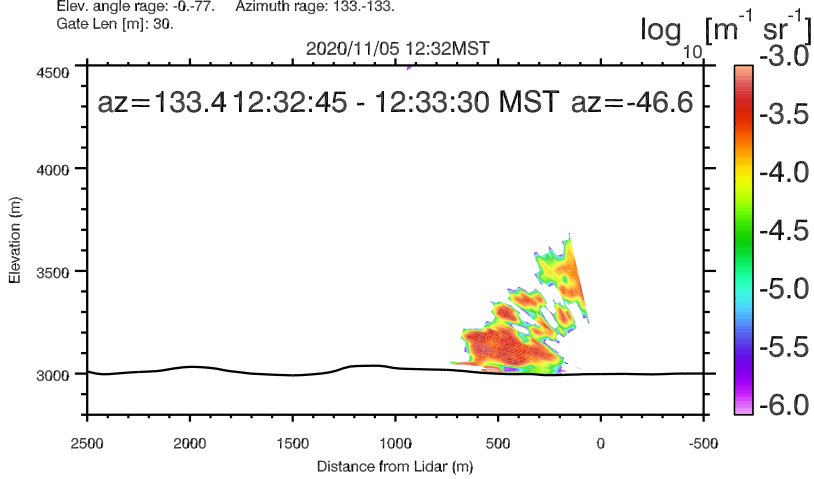
UNR LIDAR - FASMEE/ANNABELLA [Sebastian Hoch]
 Elev. angle rage: -0.-74. Azimuth rage: 145.-145.
 Gate Len [m]: 30.



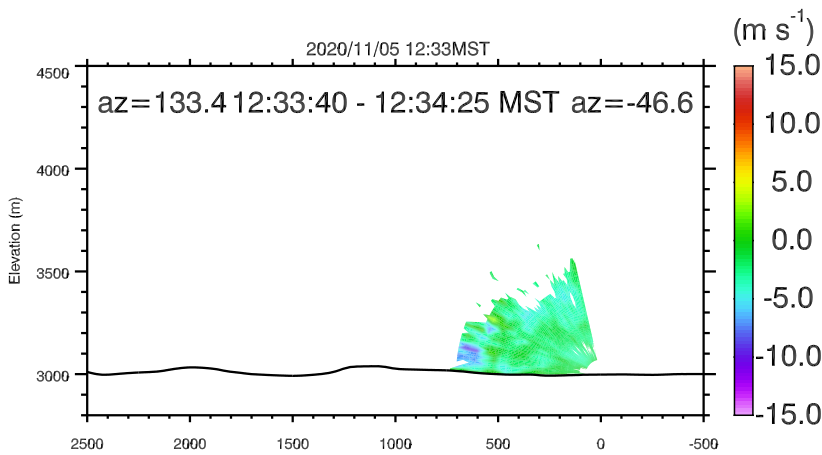
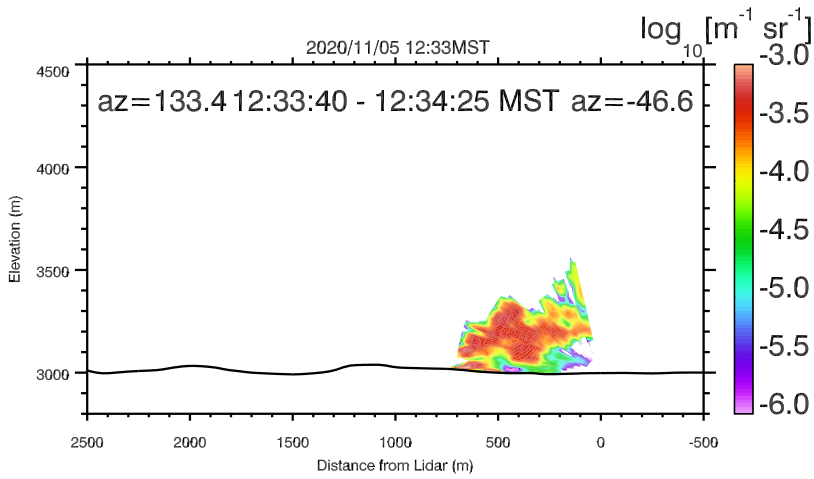
UNR LIDAR - FASMEE/ANNABELLA [Sebastian Hoch]
 Elev. angle rage: -0.-74. Azimuth rage: 145.-145.
 Gate Len [m]: 30.



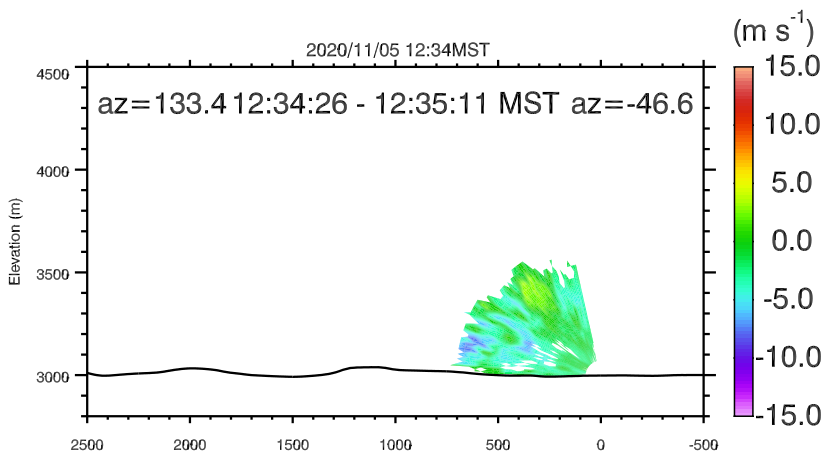
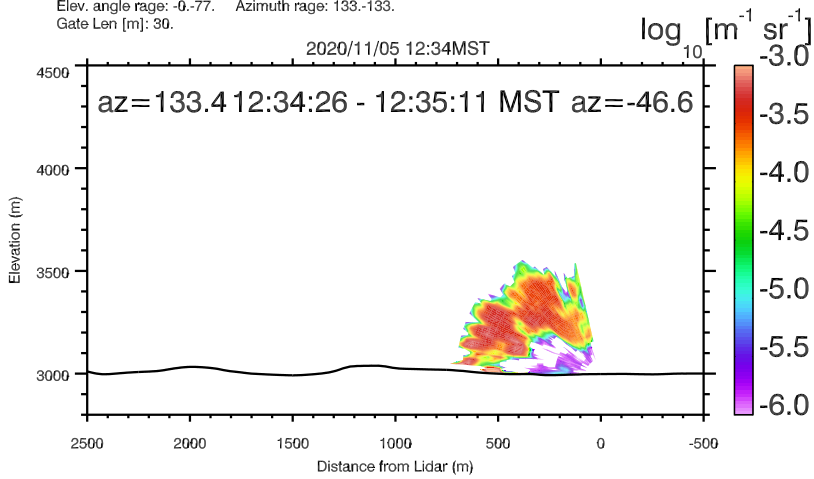
UNR LIDAR - FASMEE/ANNABELLA [Sebastian Hoch]
 Elev. angle rage: -0.-77. Azimuth rage: 133.-133.
 Gate Len [m]: 30.



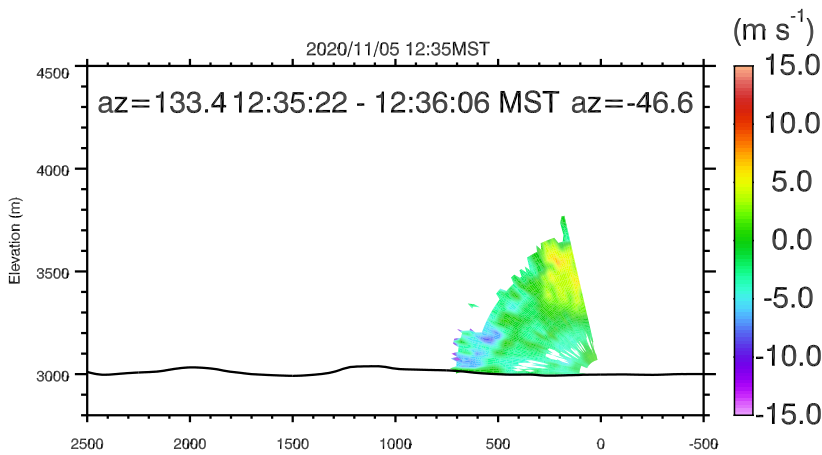
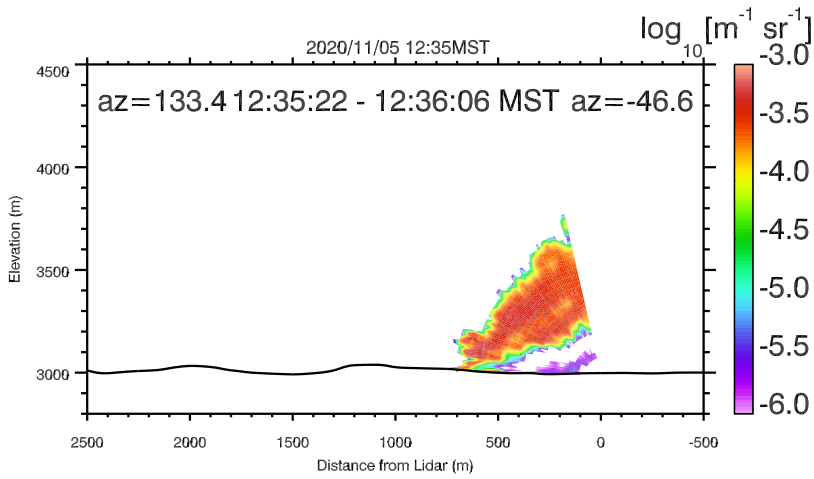
UNR LIDAR - FASMEE/ANNABELLA [Sebastian Hoch]
 Elev. angle rage: -0.-77. Azimuth rage: 133.-133.
 Gate Len [m]: 30.



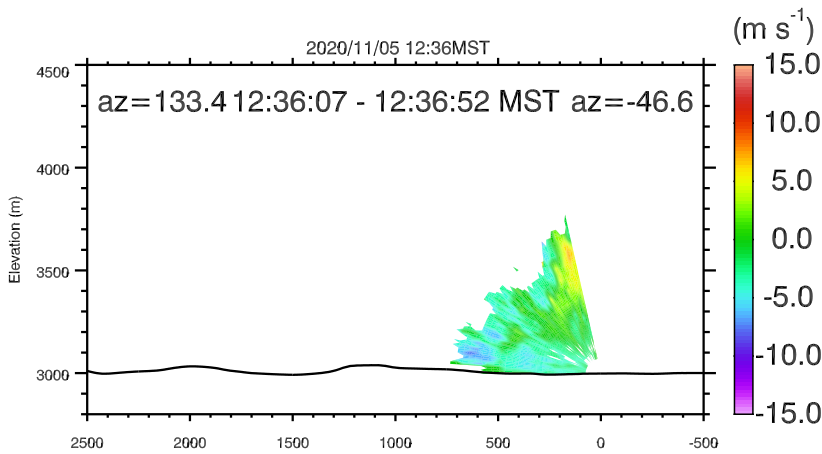
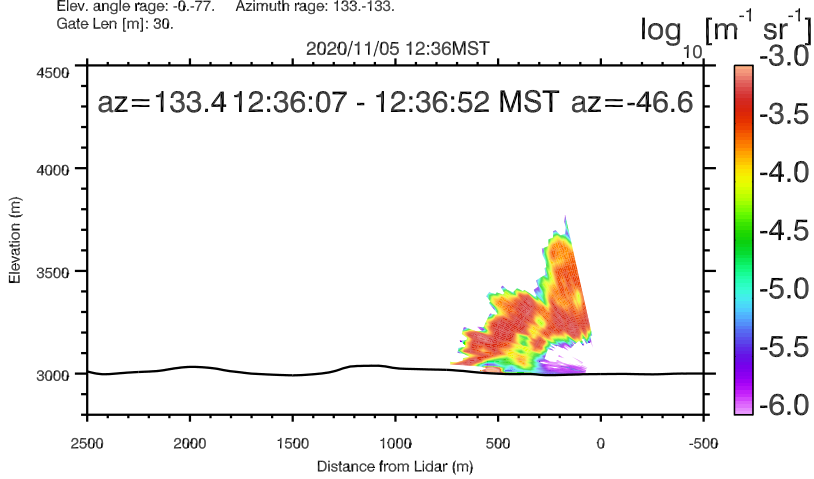
UNR LIDAR - FASMEE/ANNABELLA [Sebastian Hoch]
 Elev. angle rage: -0.-77. Azimuth rage: 133.-133.
 Gate Len [m]: 30.



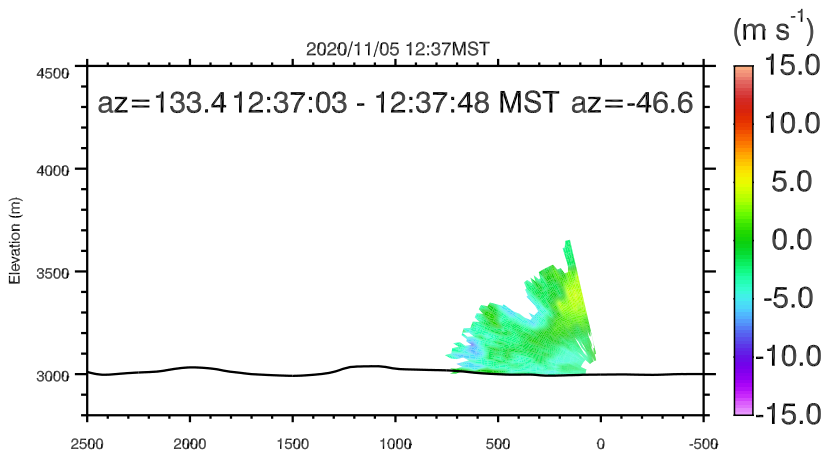
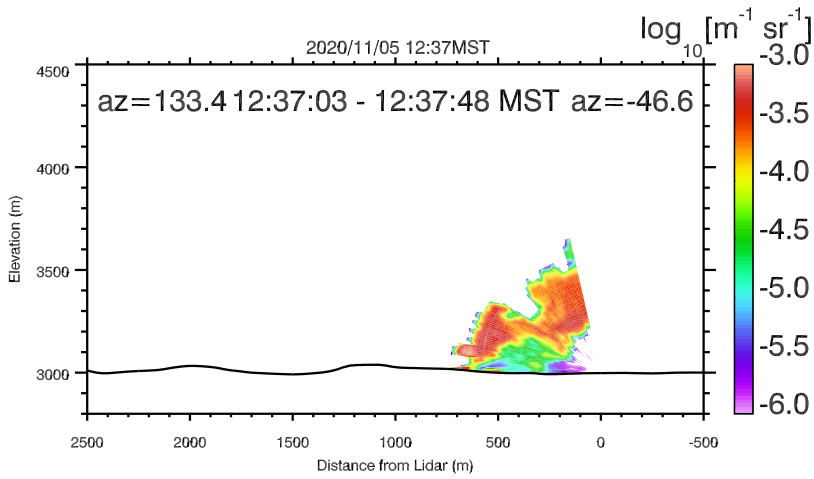
UNR LIDAR - FASMEE/ANNABELLA [Sebastian Hoch]
 Elev. angle rage: -0.-77. Azimuth rage: 133.-133.
 Gate Len [m]: 30.



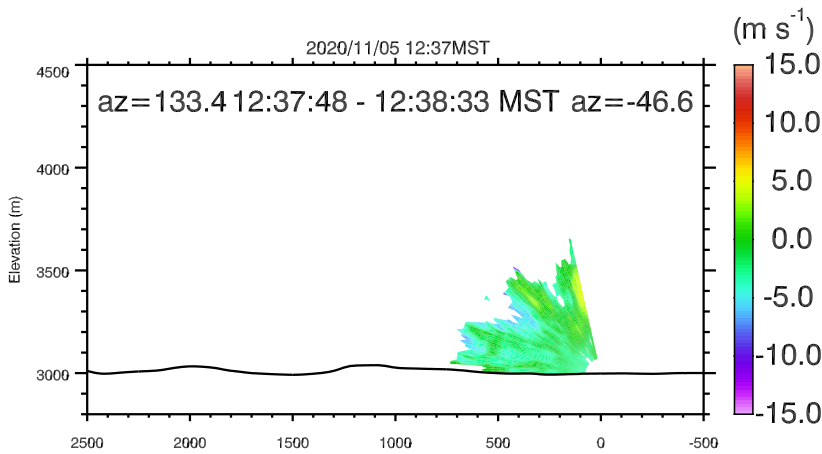
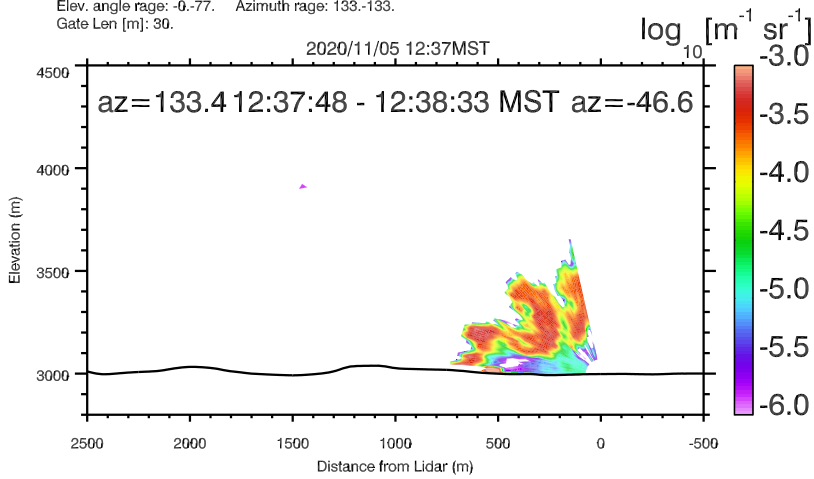
UNR LIDAR - FASMEE/ANNABELLA [Sebastian Hoch]
 Elev. angle range: -0.-77. Azimuth range: 133.-133.
 Gate Len [m]: 30.



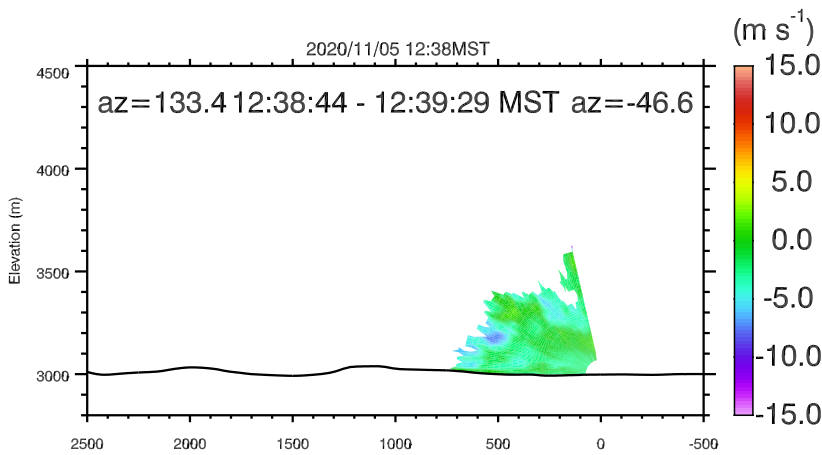
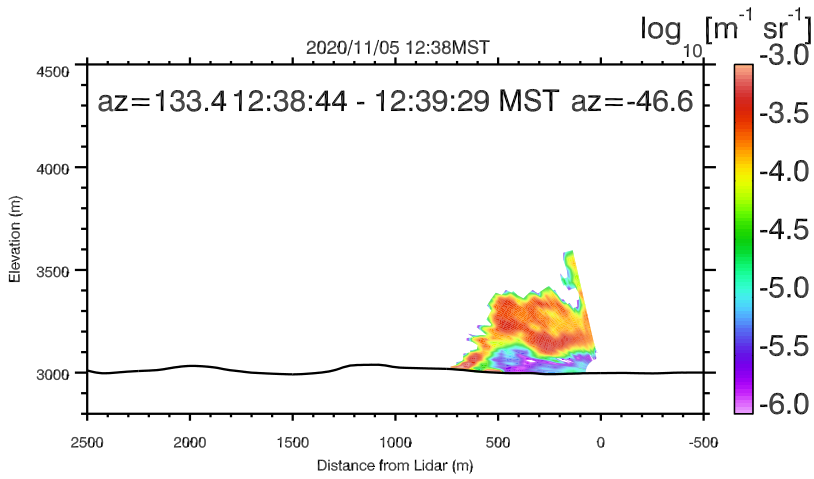
UNR LIDAR - FASMEE/ANNABELLA [Sebastian Hoch]
 Elev. angle range: -0.-77. Azimuth range: 133.-133.
 Gate Len [m]: 30.



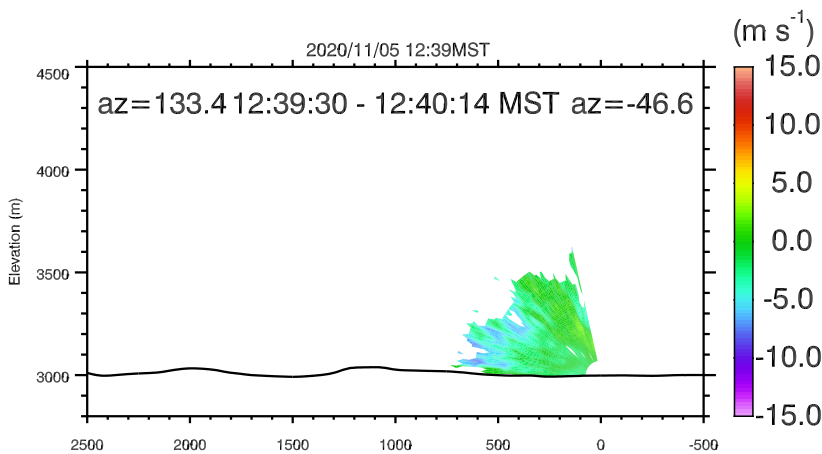
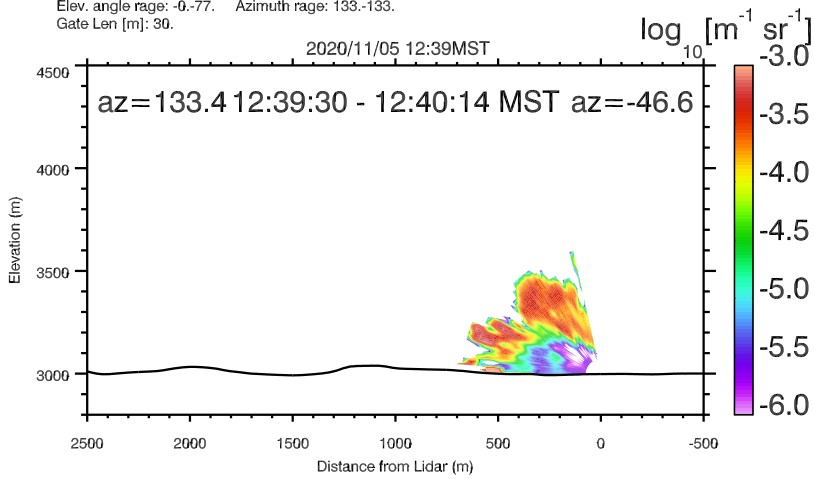
UNR LIDAR - FASMEE/ANNABELLA [Sebastian Hoch]
 Elev. angle range: -0.-77. Azimuth range: 133.-133.
 Gate Len [m]: 30.



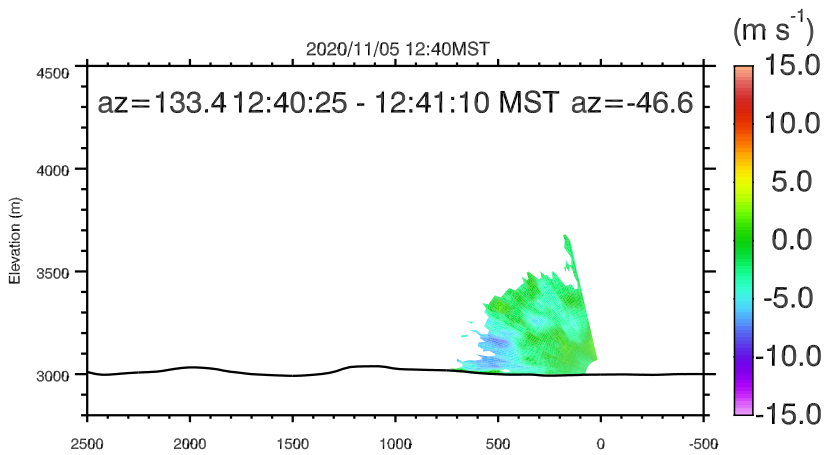
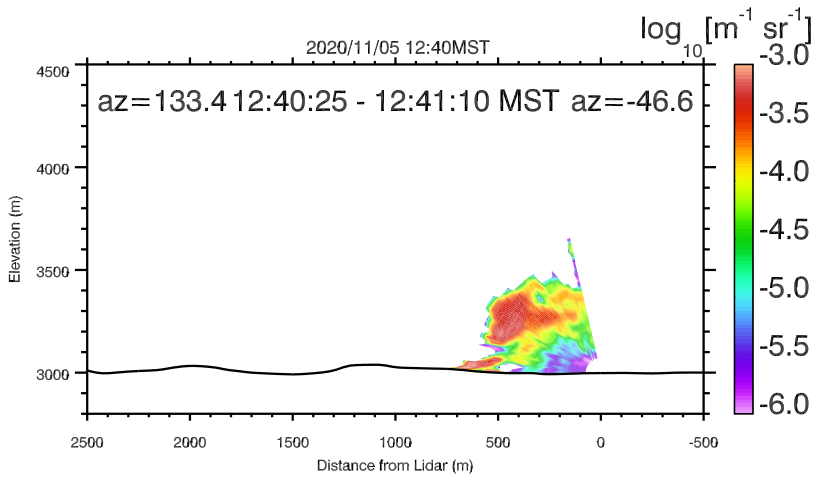
UNR LIDAR - FASMEE/ANNABELLA [Sebastian Hoch]
 Elev. angle range: -0.-77. Azimuth range: 133.-133.
 Gate Len [m]: 30.



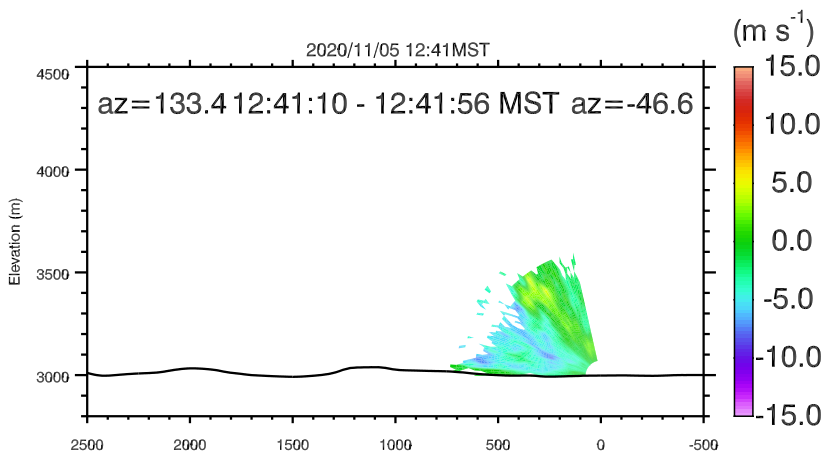
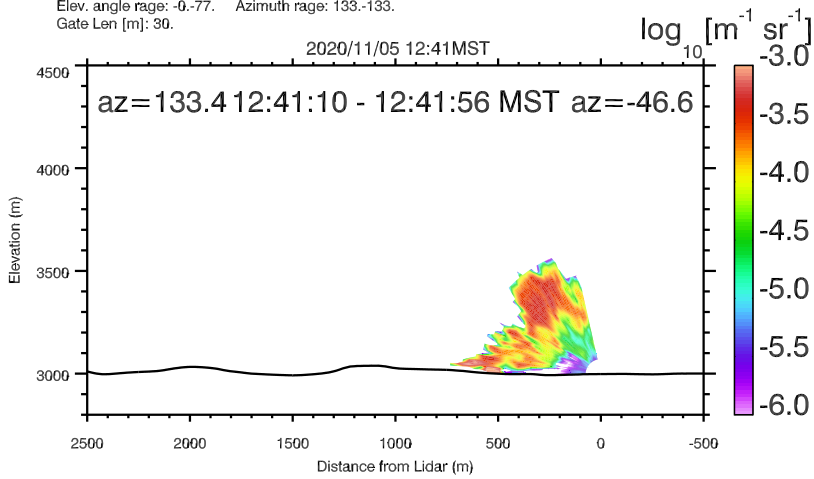
UNR LIDAR - FASMEE/ANNABELLA [Sebastian Hoch]
 Elev. angle range: -0.-77. Azimuth range: 133.-133.
 Gate Len [m]: 30.



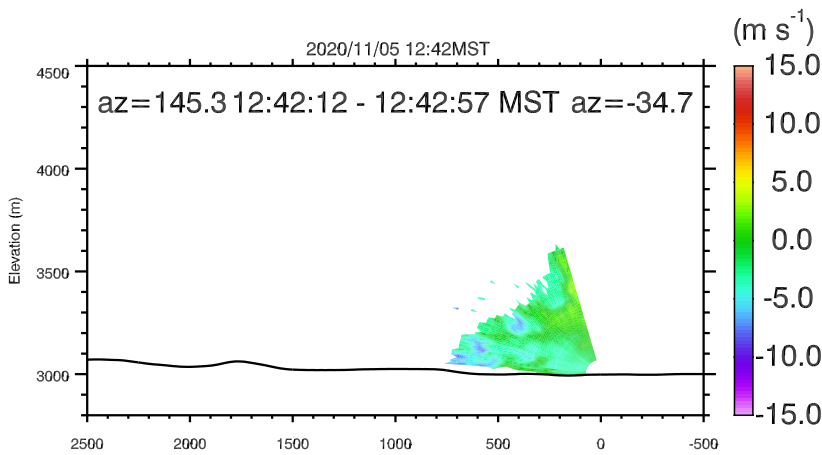
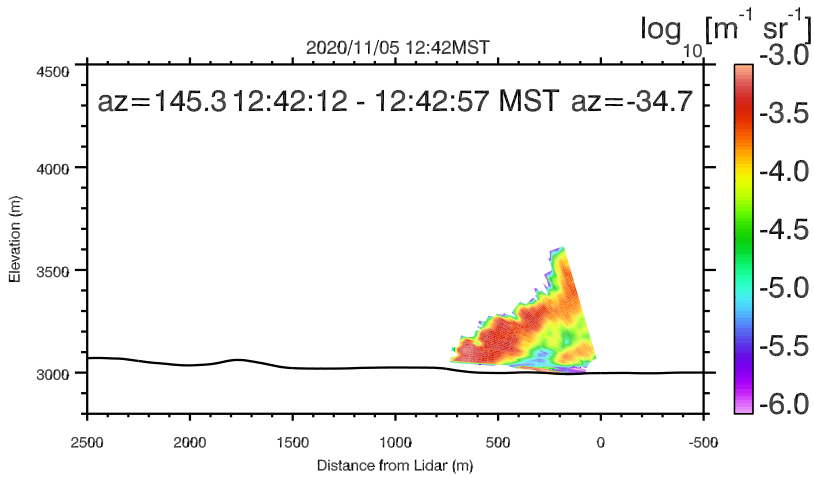
UNR LIDAR - FASMEE/ANNABELLA [Sebastian Hoch]
 Elev. angle range: -0.-77. Azimuth range: 133.-133.
 Gate Len [m]: 30.



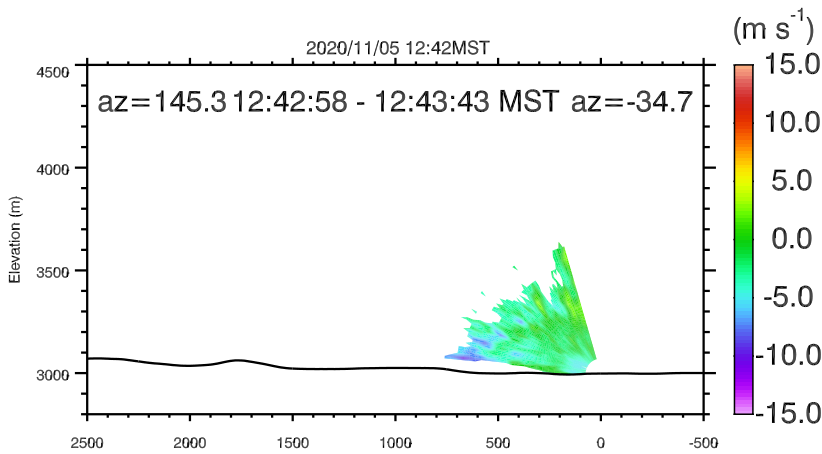
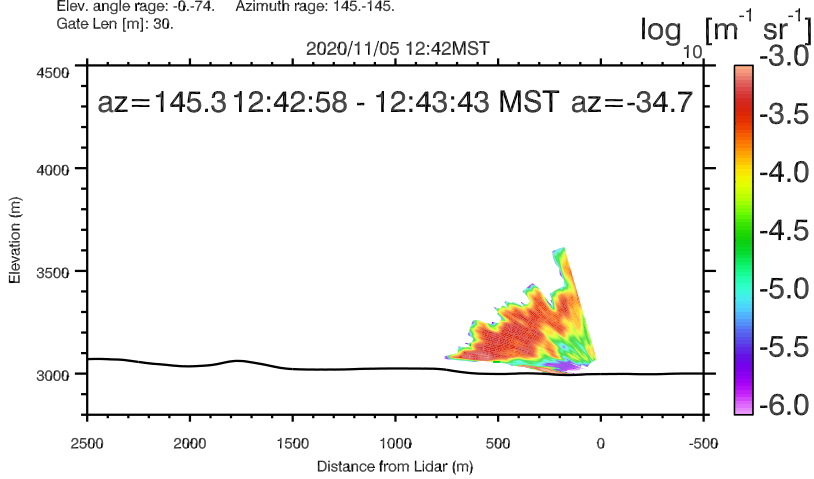
UNR LIDAR - FASMEE/ANNABELLA [Sebastian Hoch]
 Elev. angle range: -0.-77. Azimuth range: 133.-133.
 Gate Len [m]: 30.



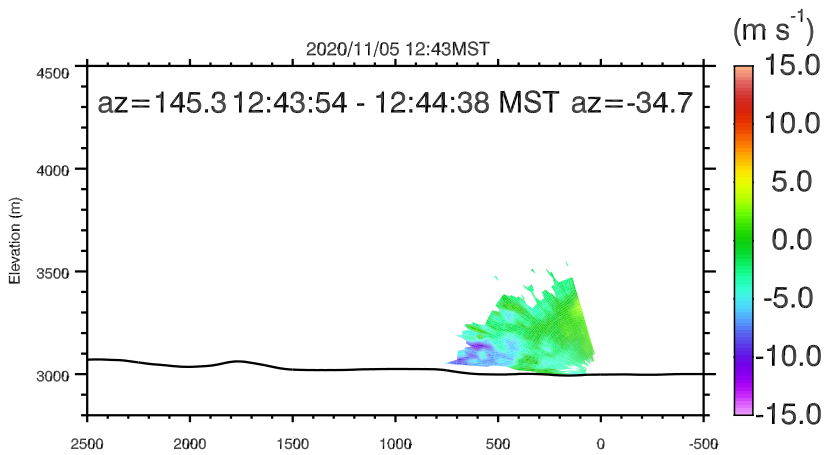
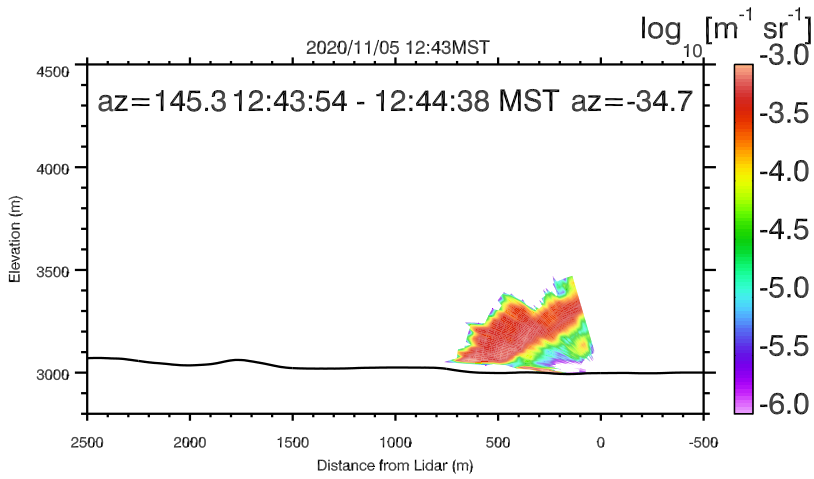
UNR LIDAR - FASMEE/ANNABELLA [Sebastian Hoch]
 Elev. angle range: -0.-77. Azimuth range: 133.-133.
 Gate Len [m]: 30.



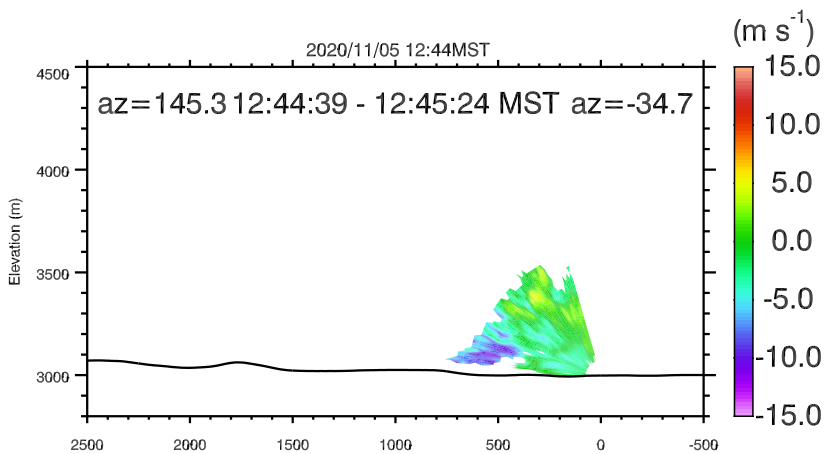
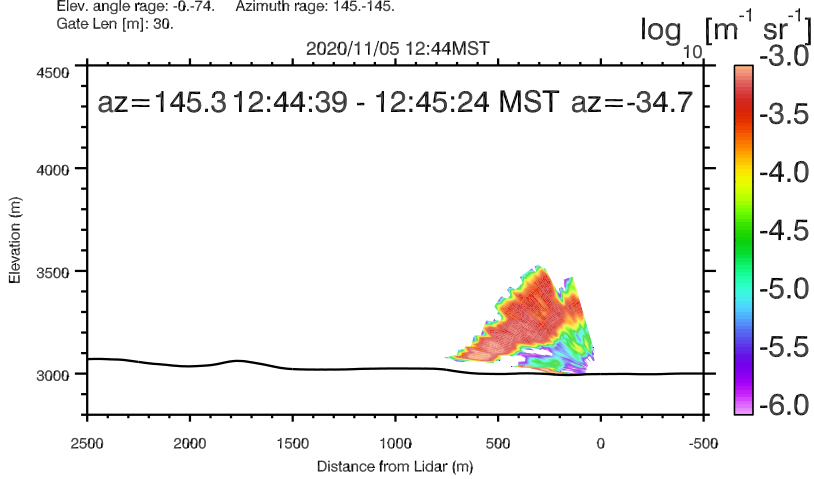
UNR LIDAR - FASMEE/ANNABELLA [Sebastian Hoch]
 Elev. angle range: -0.-74. Azimuth range: 145.-145.
 Gate Len [m]: 30.



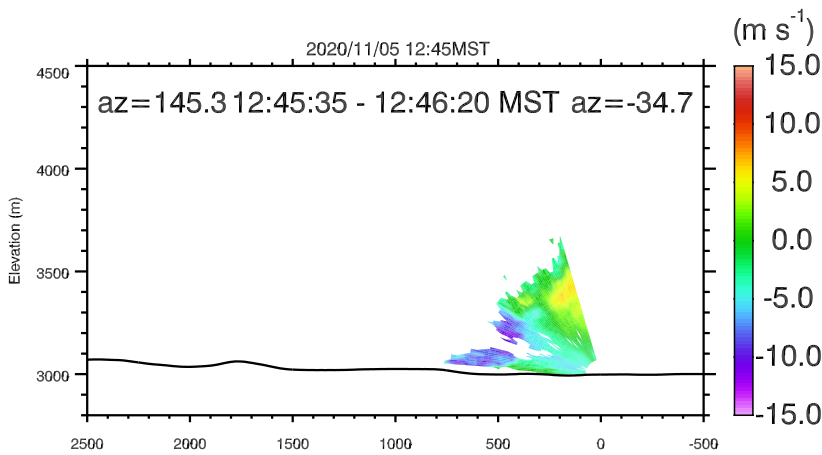
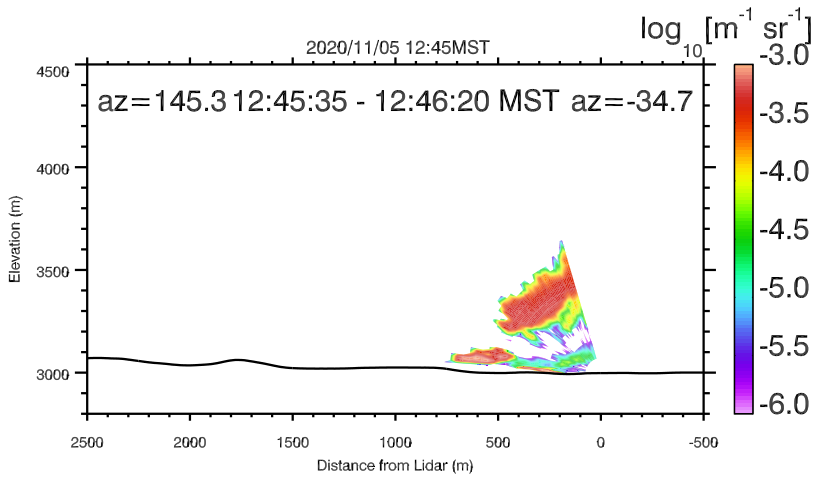
UNR LIDAR - FASMEE/ANNABELLA [Sebastian Hoch]
 Elev. angle range: -0.-74. Azimuth range: 145.-145.
 Gate Len [m]: 30.



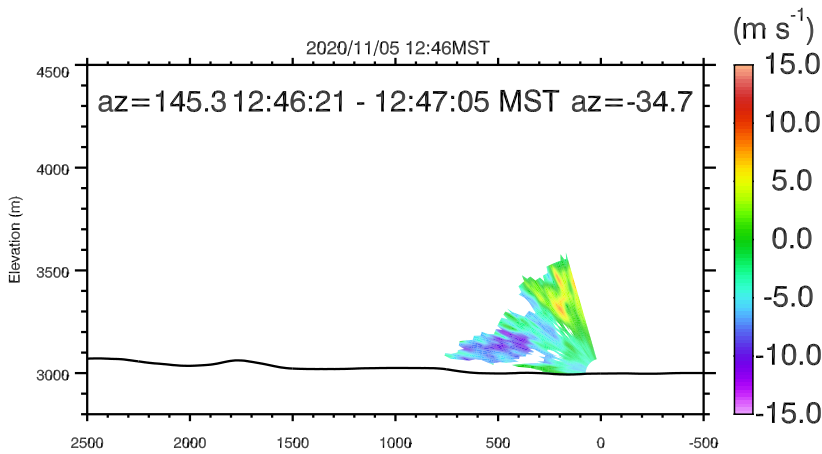
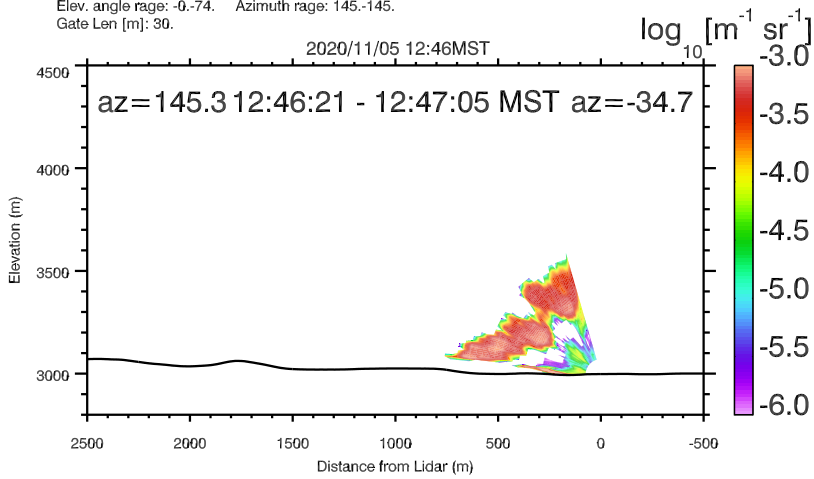
UNR LIDAR - FASMEE/ANNABELLA [Sebastian Hoch]
 Elev. angle range: -0.-74. Azimuth range: 145.-145.
 Gate Len [m]: 30.



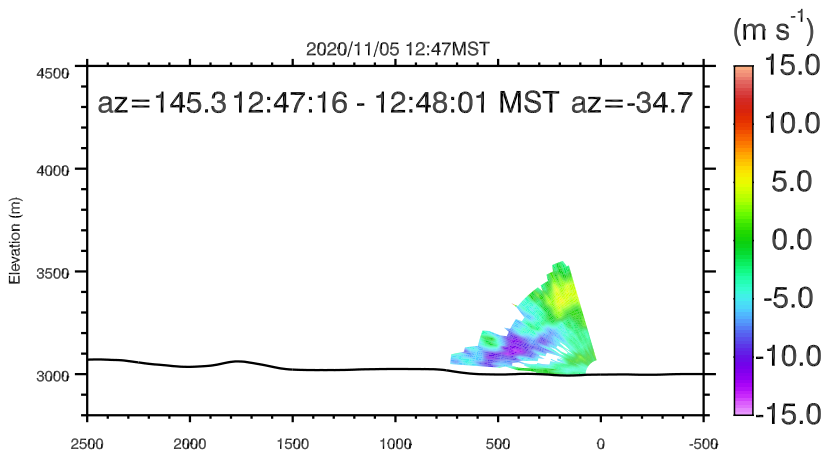
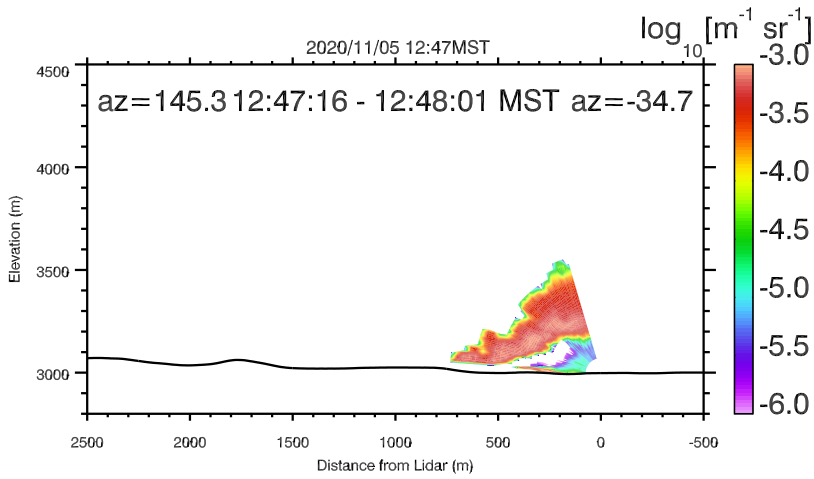
UNR LIDAR - FASMEE/ANNABELLA [Sebastian Hoch]
 Elev. angle range: -0.-74. Azimuth range: 145.-145.
 Gate Len [m]: 30.



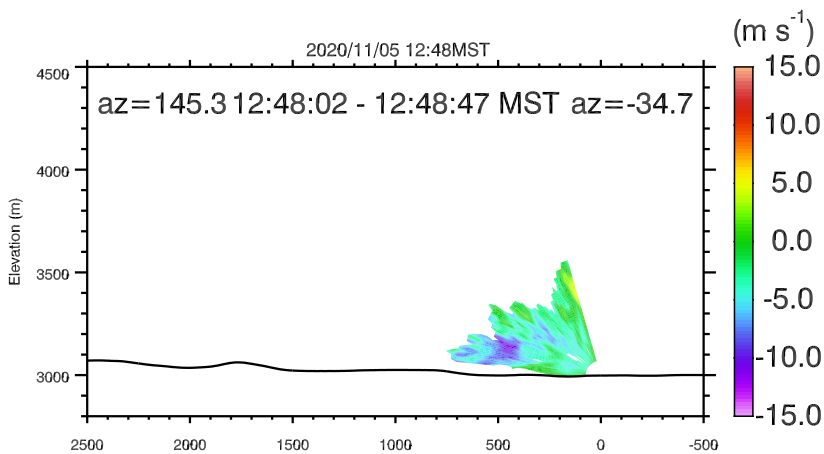
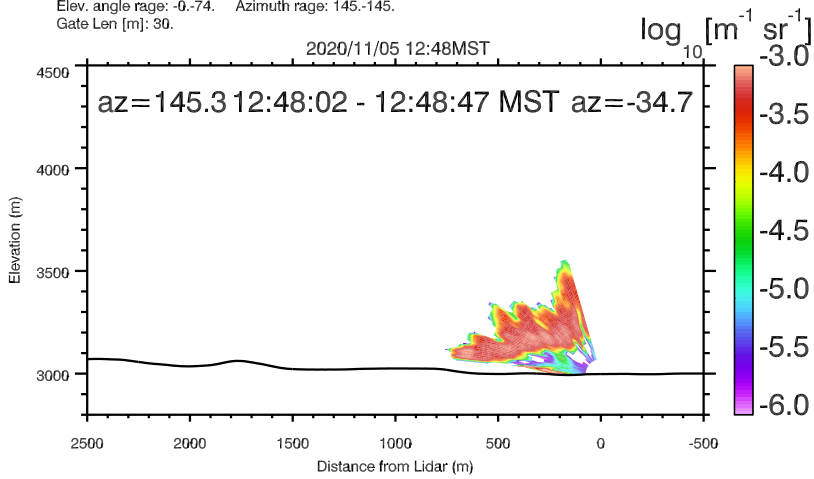
UNR LIDAR - FASMEE/ANNABELLA [Sebastian Hoch]
 Elev. angle range: -0.-74. Azimuth range: 145.-145.
 Gate Len [m]: 30.



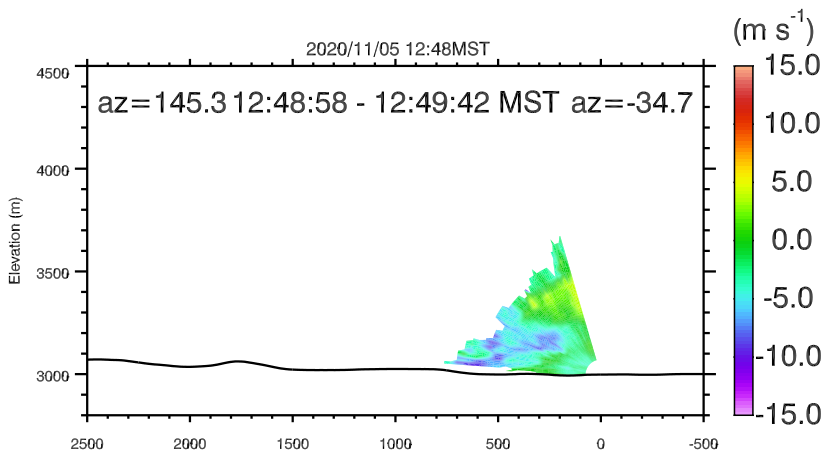
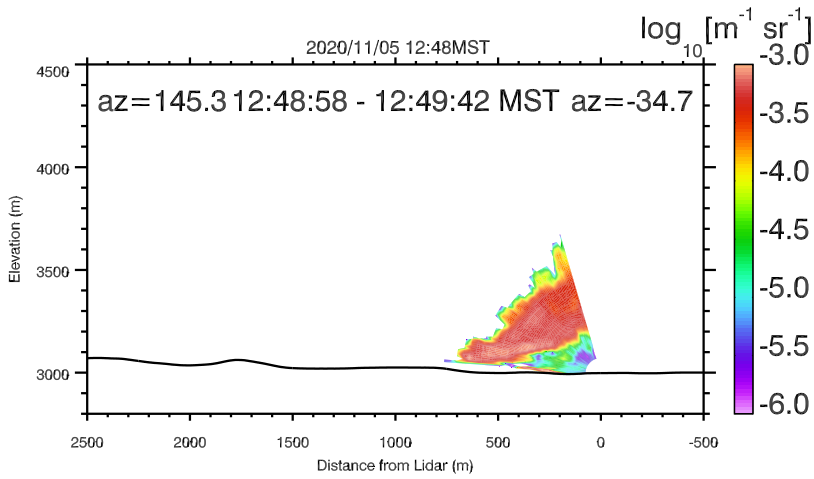
UNR LIDAR - FASMEE/ANNABELLA [Sebastian Hoch]
 Elev. angle range: -0.-74. Azimuth range: 145.-145.
 Gate Len [m]: 30.



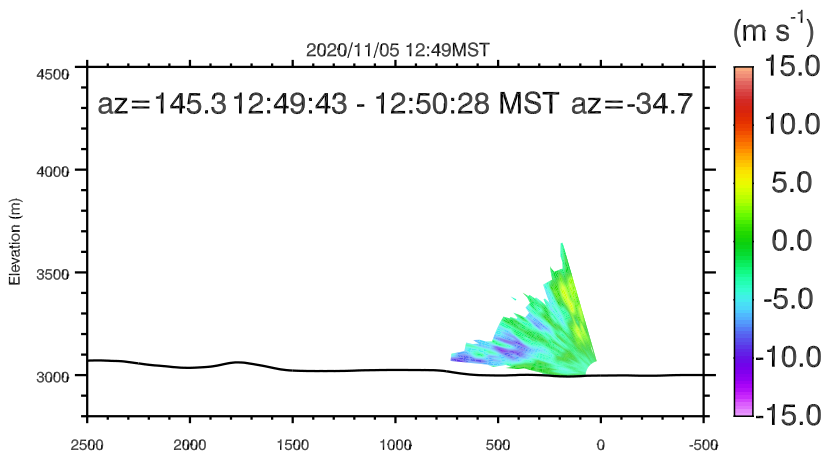
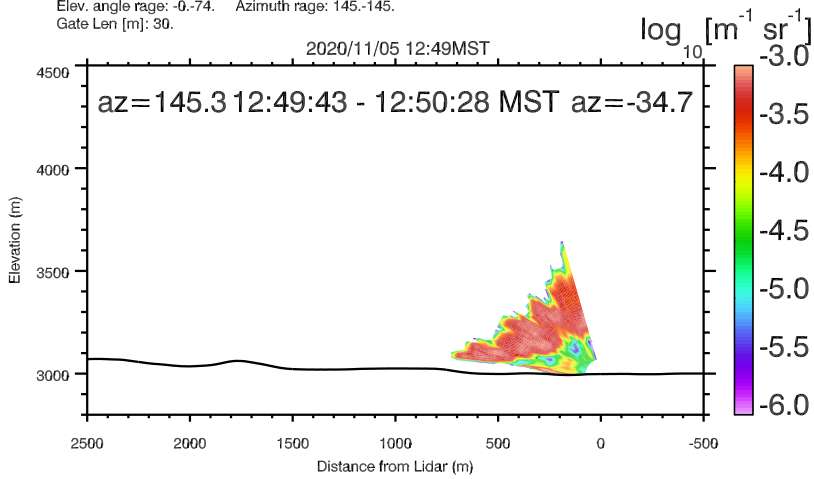
UNR LIDAR - FASMEE/ANNABELLA [Sebastian Hoch]
 Elev. angle rage: -0.-74. Azimuth rage: 145.-145.
 Gate Len [m]: 30.



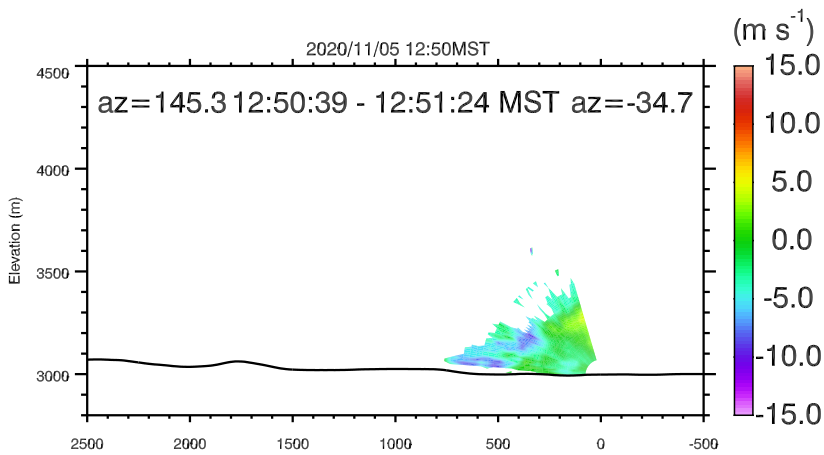
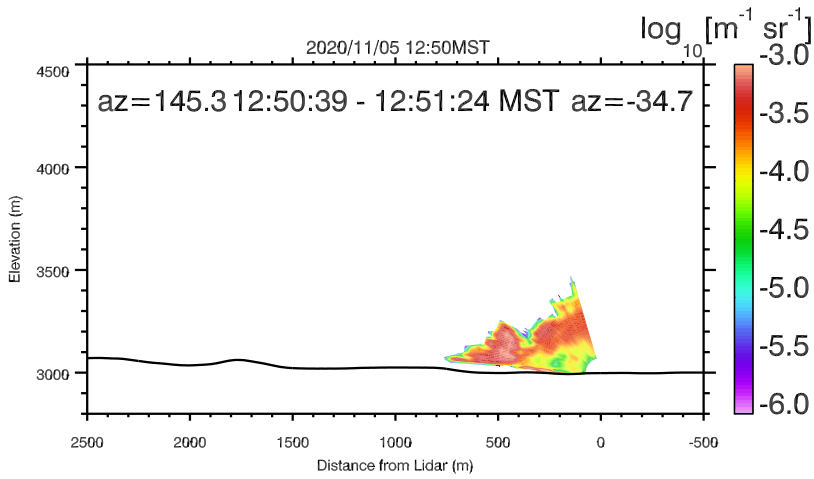
UNR LIDAR - FASMEE/ANNABELLA [Sebastian Hoch]
 Elev. angle rage: -0.-74. Azimuth rage: 145.-145.
 Gate Len [m]: 30.



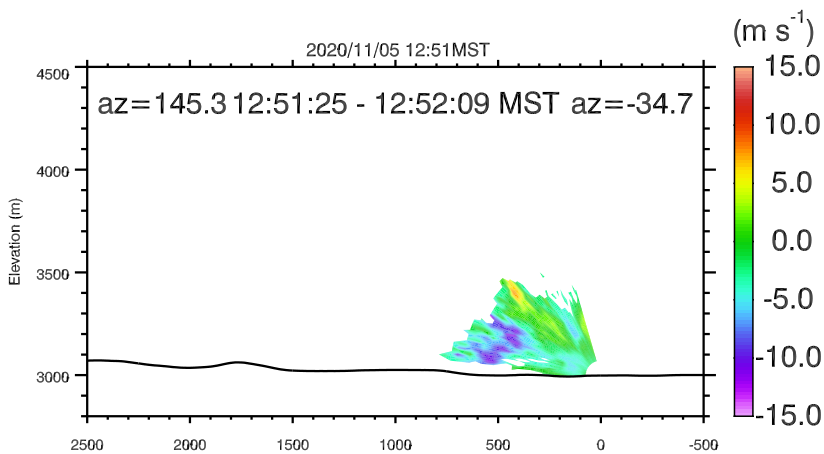
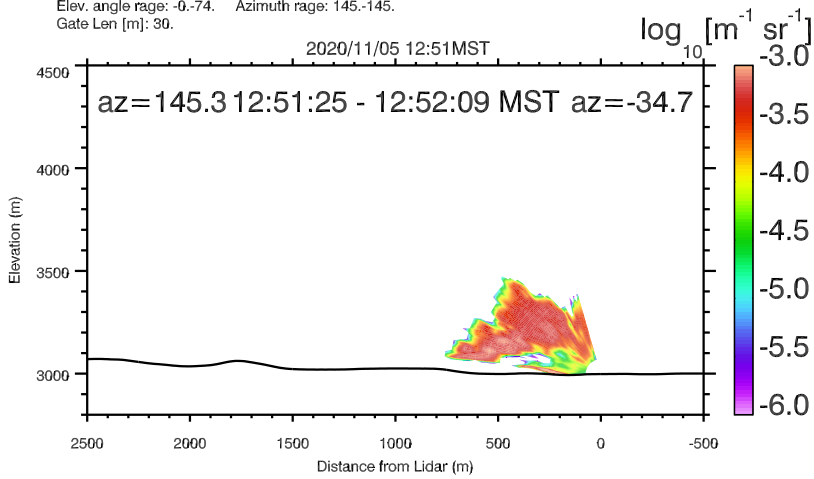
UNR LIDAR - FASMEE/ANNABELLA [Sebastian Hoch]
 Elev. angle range: -0.-74. Azimuth range: 145.-145.
 Gate Len [m]: 30.



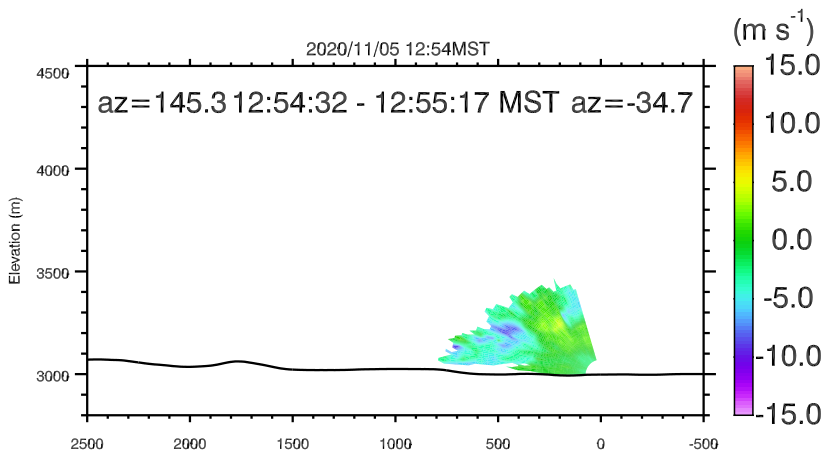
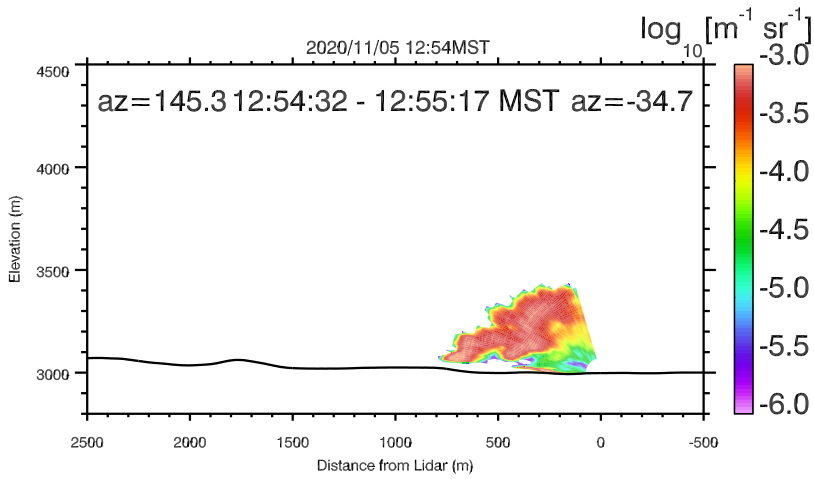
UNR LIDAR - FASMEE/ANNABELLA [Sebastian Hoch]
 Elev. angle range: -0.-74. Azimuth range: 145.-145.
 Gate Len [m]: 30.



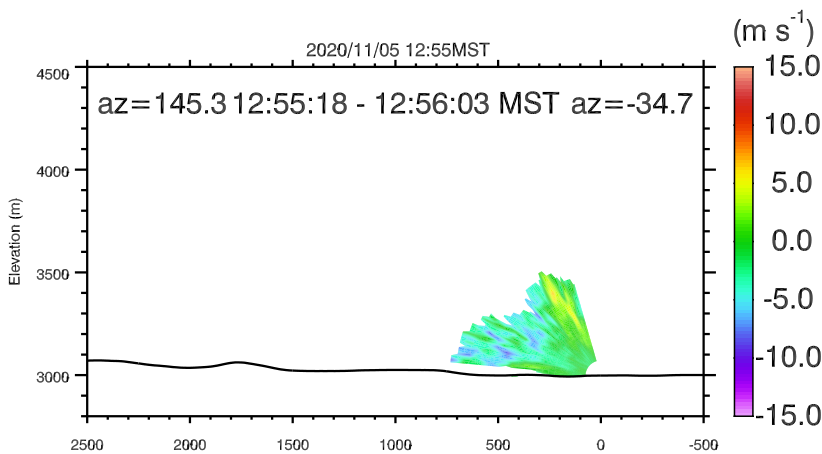
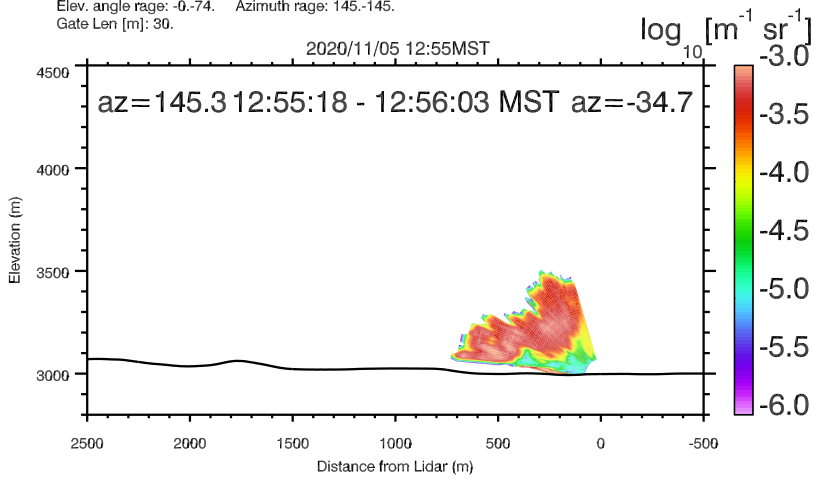
UNR LIDAR - FASMEE/ANNABELLA [Sebastian Hoch]
 Elev. angle rage: -0.-74. Azimuth rage: 145.-145.
 Gate Len [m]: 30.



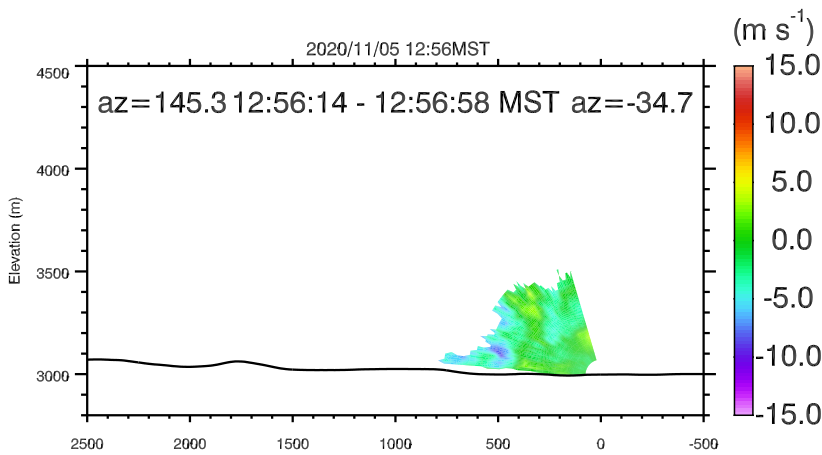
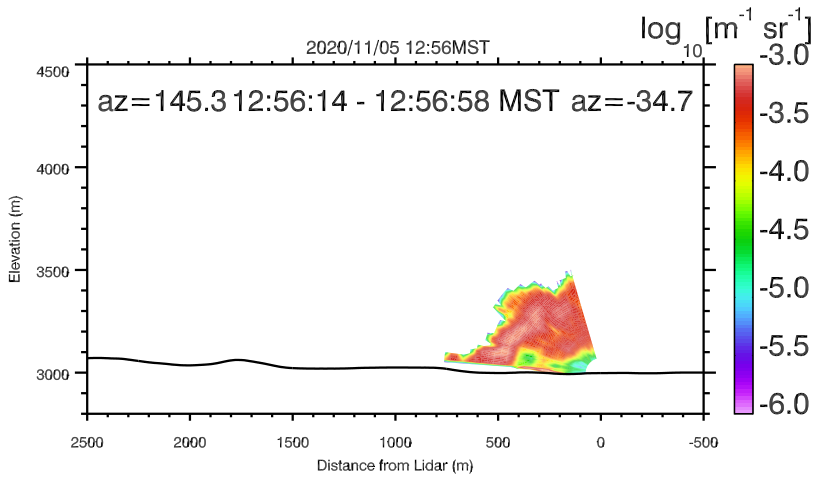
UNR LIDAR - FASMEE/ANNABELLA [Sebastian Hoch]
 Elev. angle rage: -0.-74. Azimuth rage: 145.-145.
 Gate Len [m]: 30.



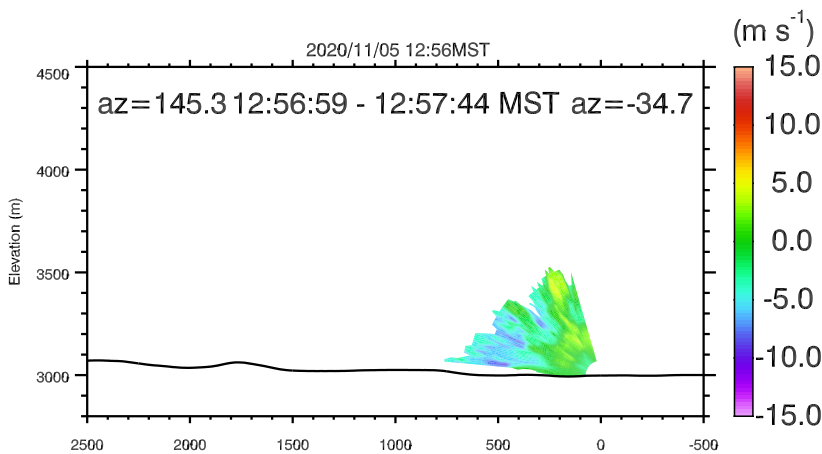
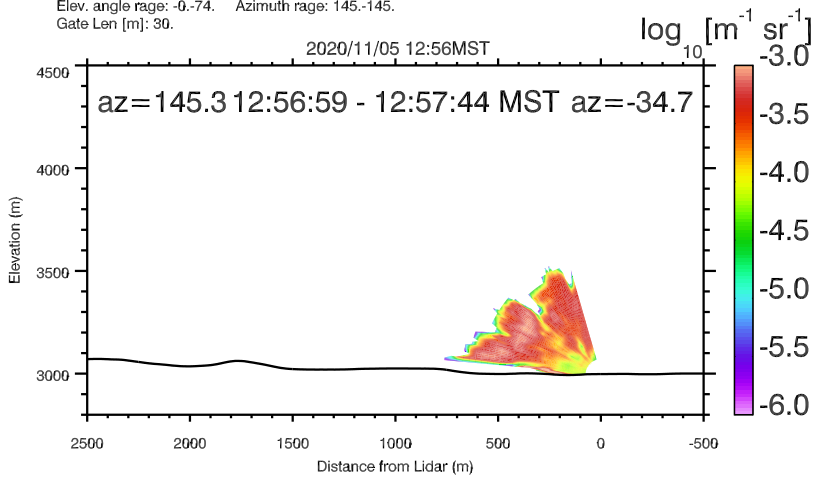
UNR LIDAR - FASMEE/ANNABELLA [Sebastian Hoch]
 Elev. angle range: -0.-74. Azimuth range: 145.-145.
 Gate Len [m]: 30.



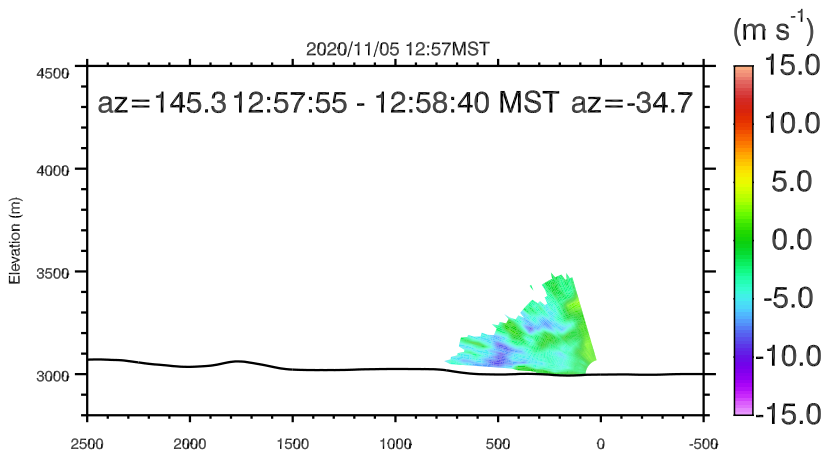
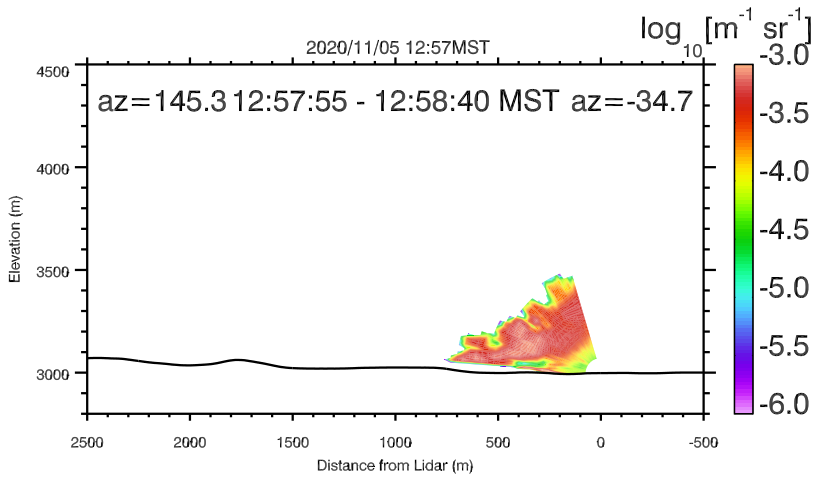
UNR LIDAR - FASMEE/ANNABELLA [Sebastian Hoch]
 Elev. angle range: -0.-74. Azimuth range: 145.-145.
 Gate Len [m]: 30.



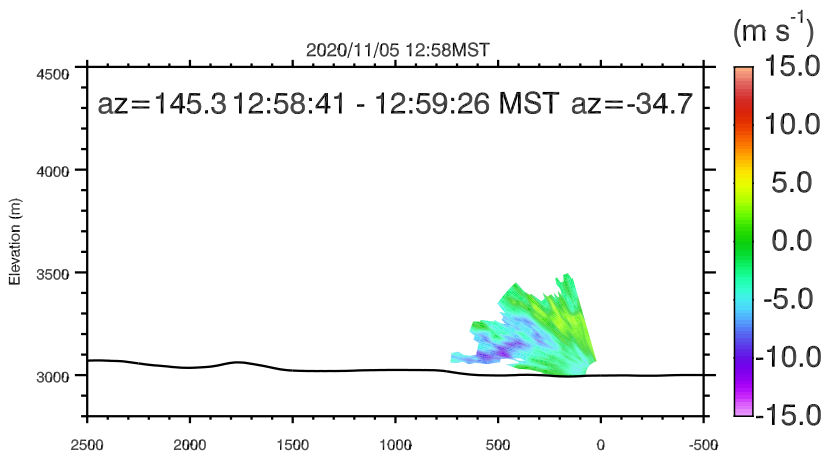
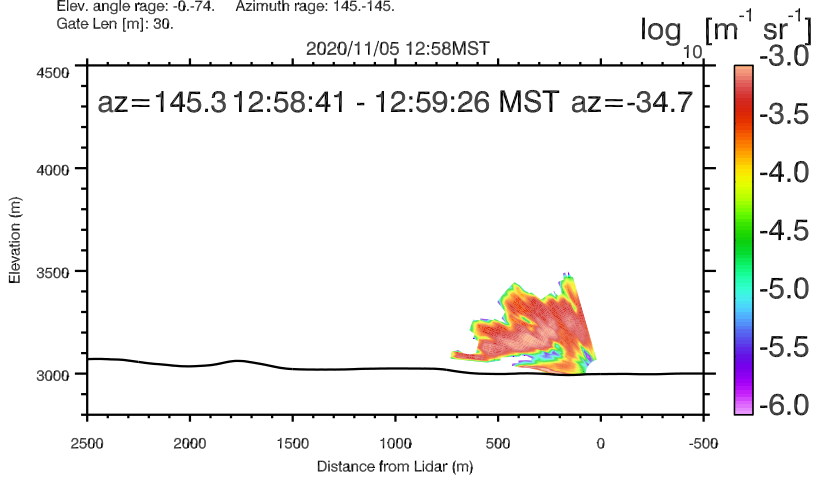
UNR LIDAR - FASMEE/ANNABELLA [Sebastian Hoch]
 Elev. angle range: -0.-74. Azimuth range: 145.-145.
 Gate Len [m]: 30.



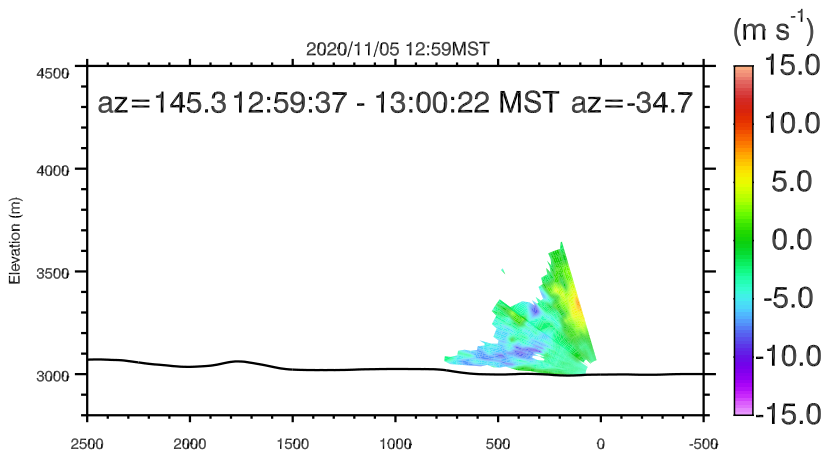
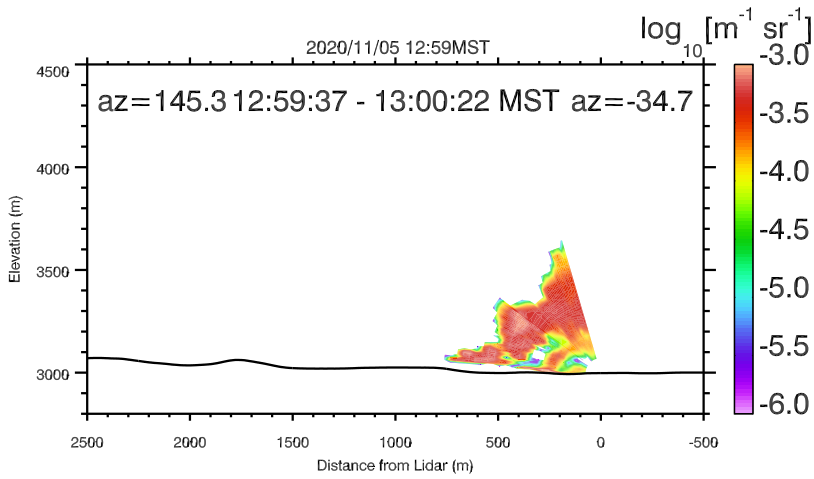
UNR LIDAR - FASMEE/ANNABELLA [Sebastian Hoch]
 Elev. angle range: -0.-74. Azimuth range: 145.-145.
 Gate Len [m]: 30.



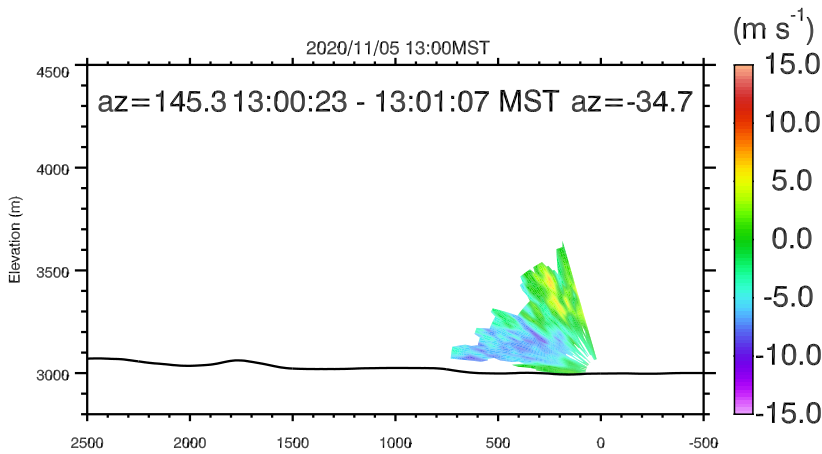
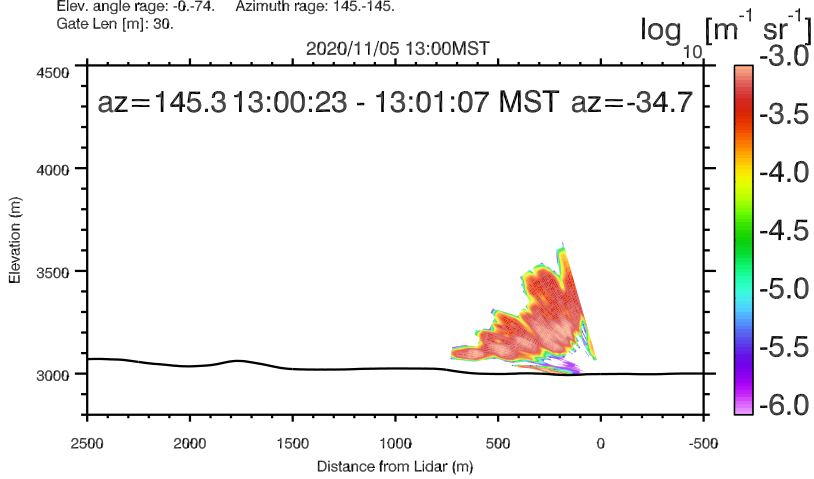
UNR LIDAR - FASMEE/ANNABELLA [Sebastian Hoch]
 Elev. angle range: -0.-74. Azimuth range: 145.-145.
 Gate Len [m]: 30.



UNR LIDAR - FASMEE/ANNABELLA [Sebastian Hoch]
 Elev. angle range: -0.-74. Azimuth range: 145.-145.
 Gate Len [m]: 30.



UNR LIDAR - FASMEE/ANNABELLA [Sebastian Hoch]
 Elev. angle range: -0.-74. Azimuth range: 145.-145.
 Gate Len [m]: 30.



UNR LIDAR - FASMEE/ANNABELLA [Sebastian Hoch]
 Elev. angle range: -0.-74. Azimuth range: 145.-145.
 Gate Len [m]: 30.