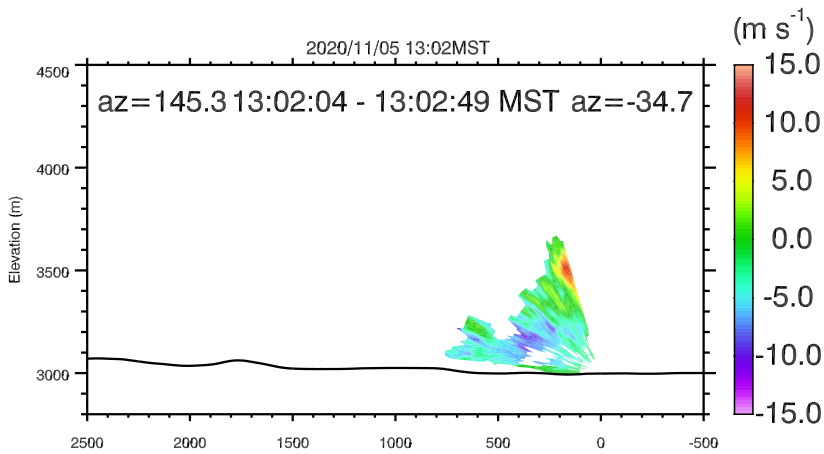
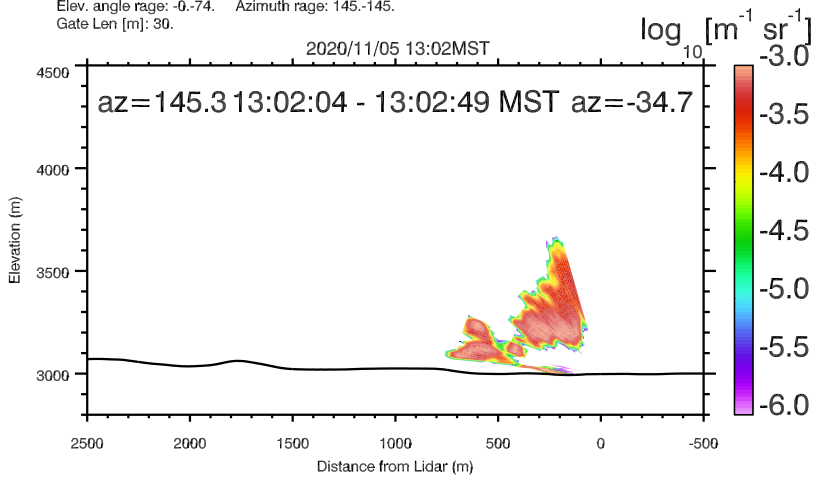
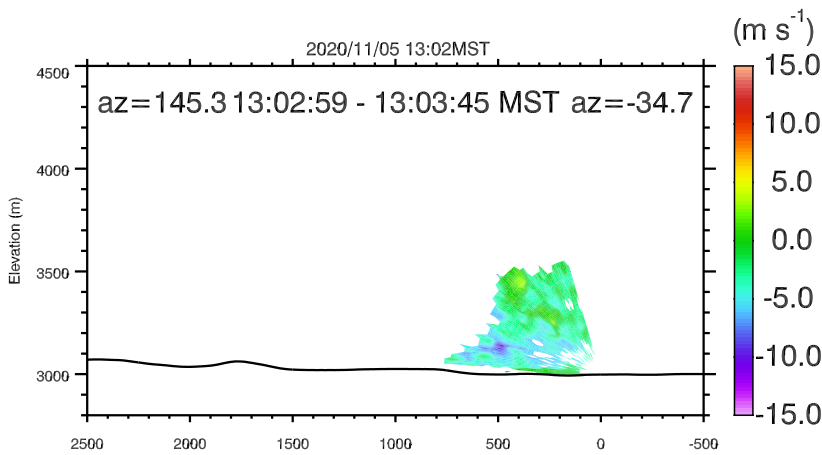
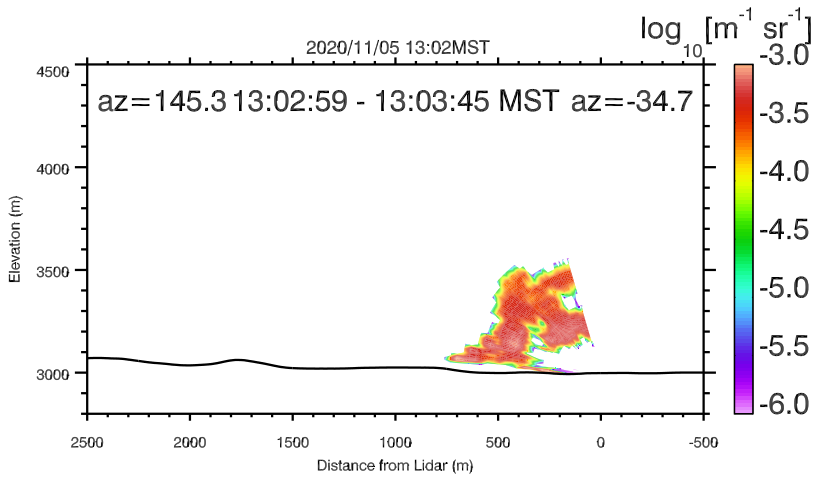


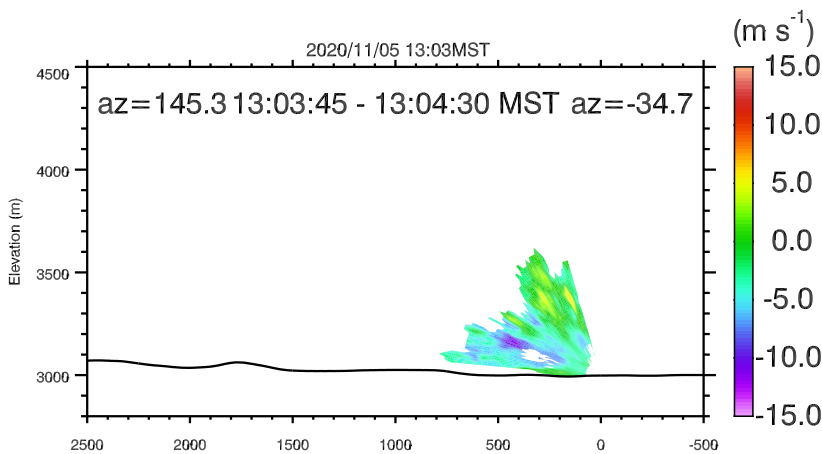
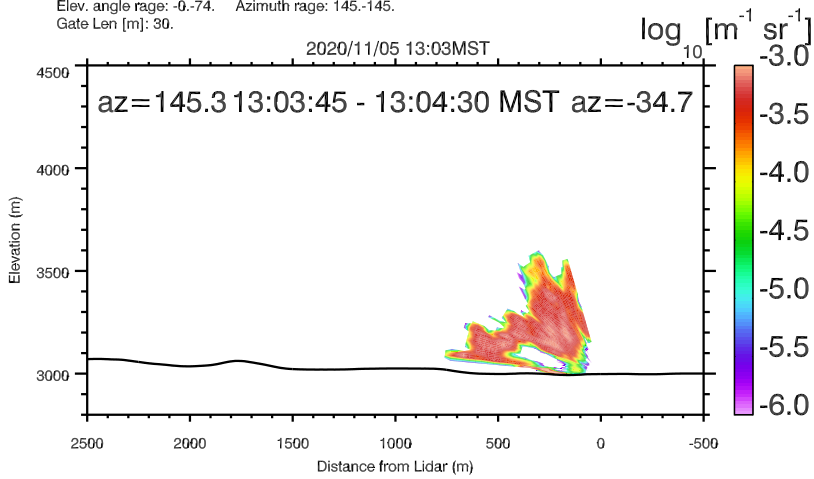
UNR LIDAR - FASMEE/ANNABELLA [Sebastian Hoch]  
 Elev. angle range: -0.-74. Azimuth range: 145.-145.  
 Gate Len [m]: 30.



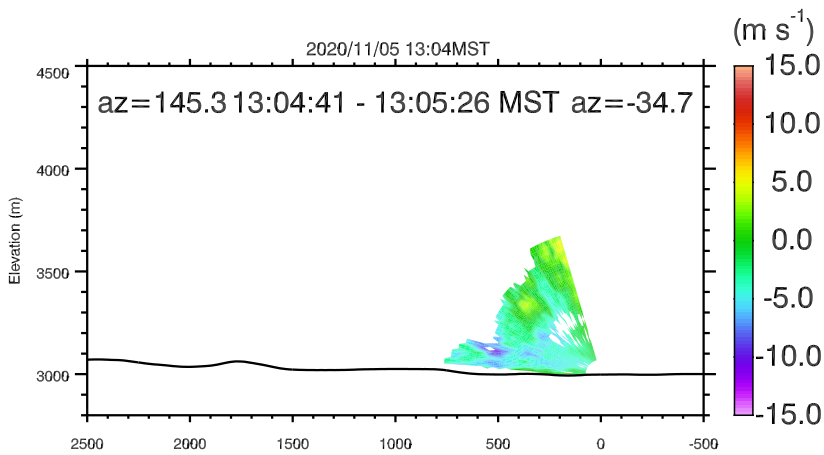
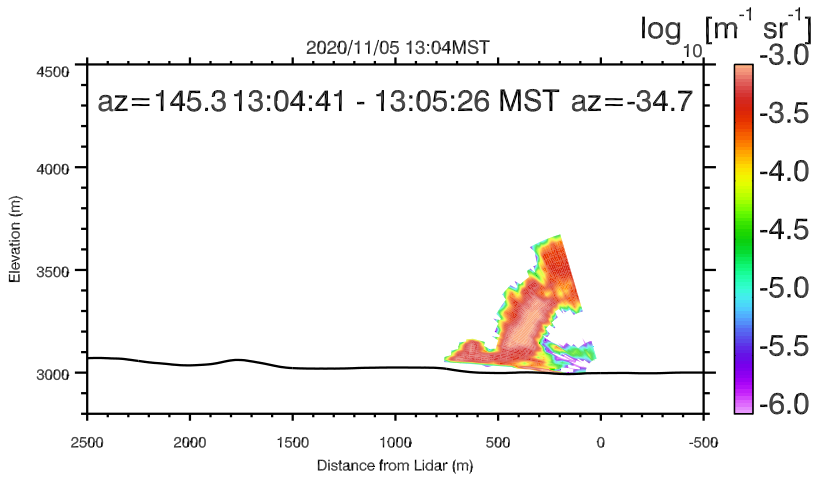
UNR LIDAR - FASMEE/ANNABELLA [Sebastian Hoch]  
 Elev. angle range: -0.-74. Azimuth range: 145.-145.  
 Gate Len [m]: 30.



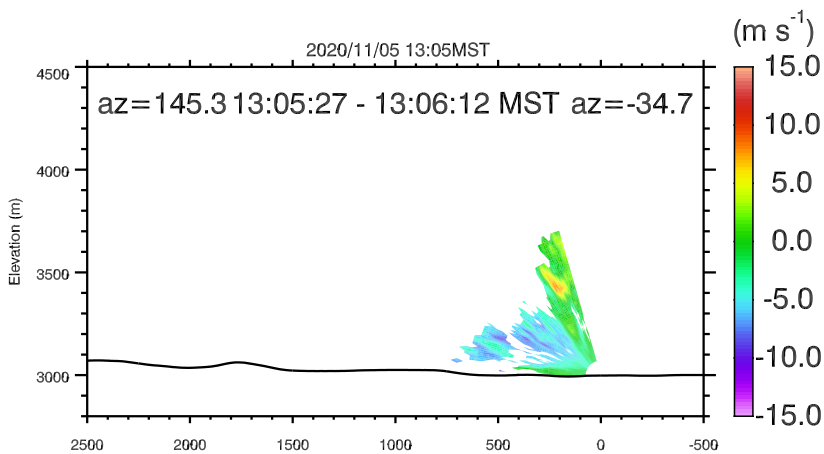
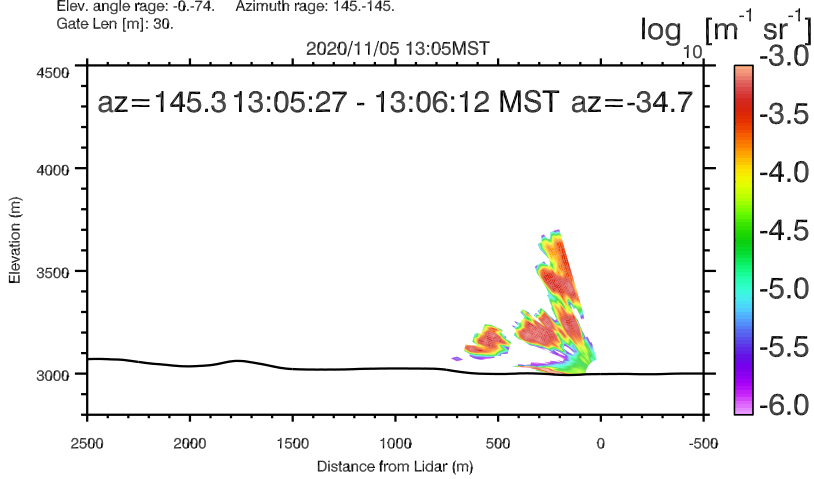
UNR LIDAR - FASMEE/ANNABELLA [Sebastian Hoch]  
 Elev. angle range: -0.-74. Azimuth range: 145.-145.  
 Gate Len [m]: 30.



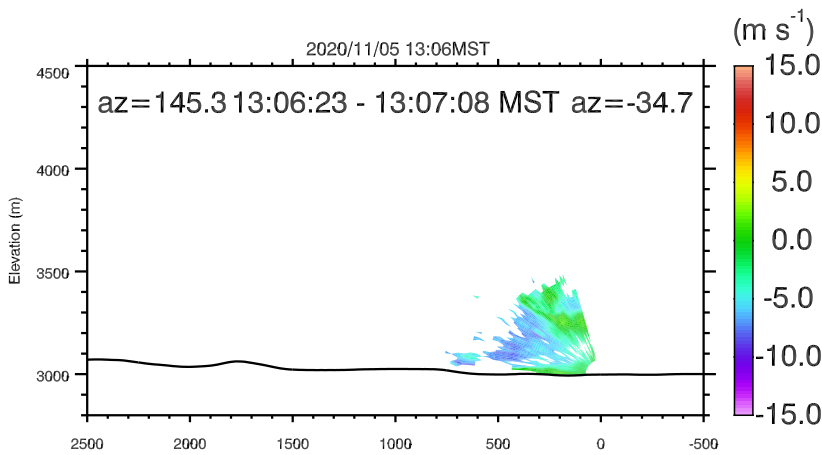
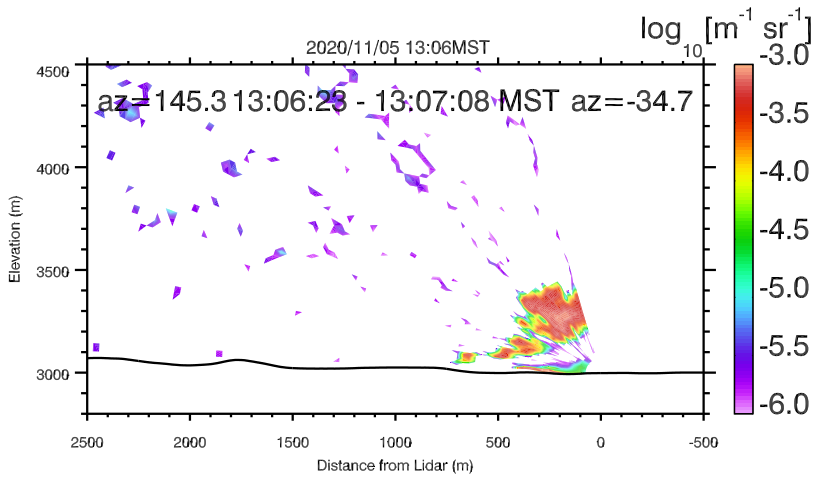
UNR LIDAR - FASMEE/ANNABELLA [Sebastian Hoch]  
 Elev. angle range: -0.-74. Azimuth range: 145.-145.  
 Gate Len [m]: 30.



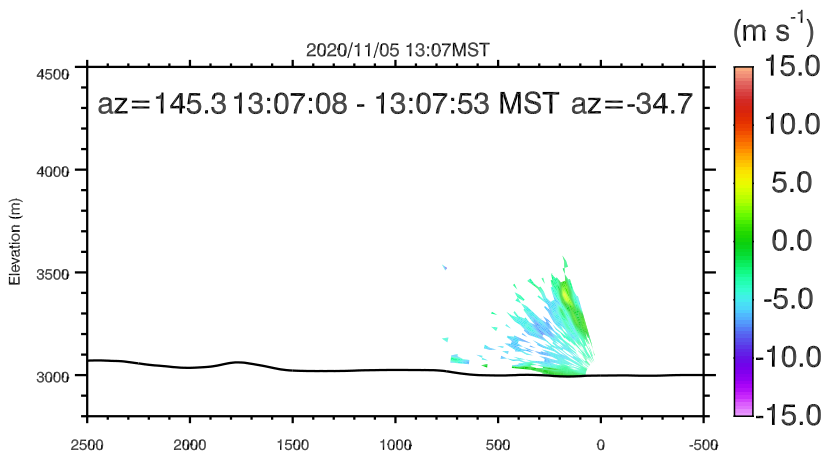
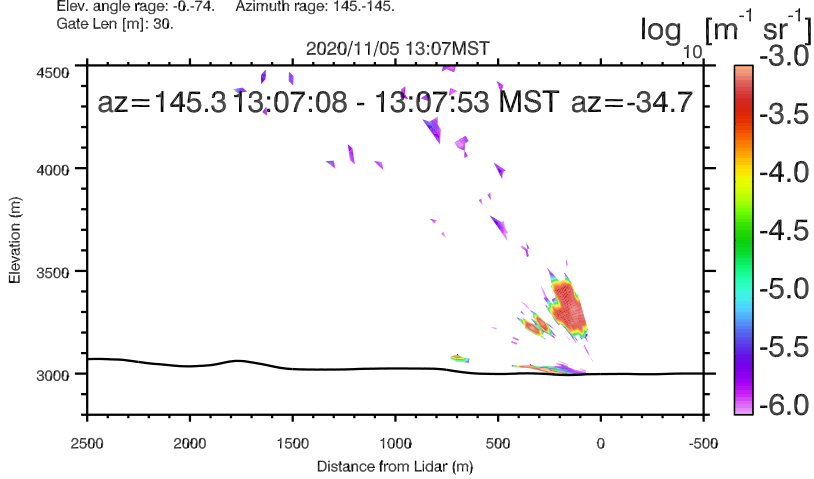
UNR LIDAR - FASMEE/ANNABELLA [Sebastian Hoch]  
 Elev. angle range: -0.-74. Azimuth range: 145.-145.  
 Gate Len [m]: 30.



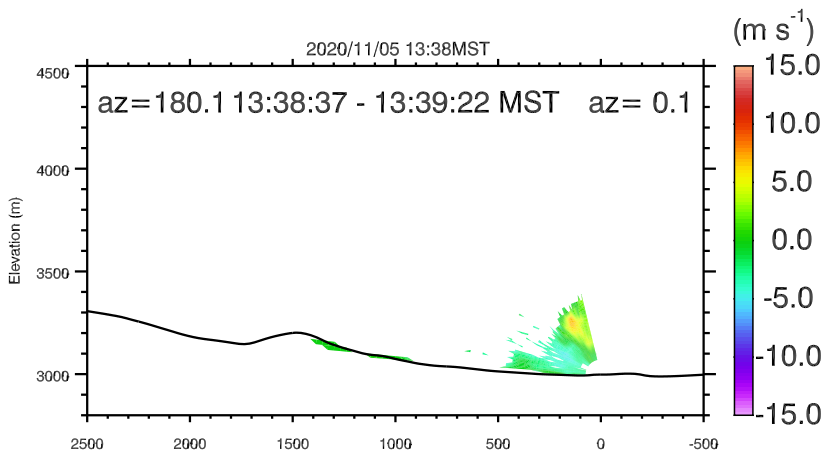
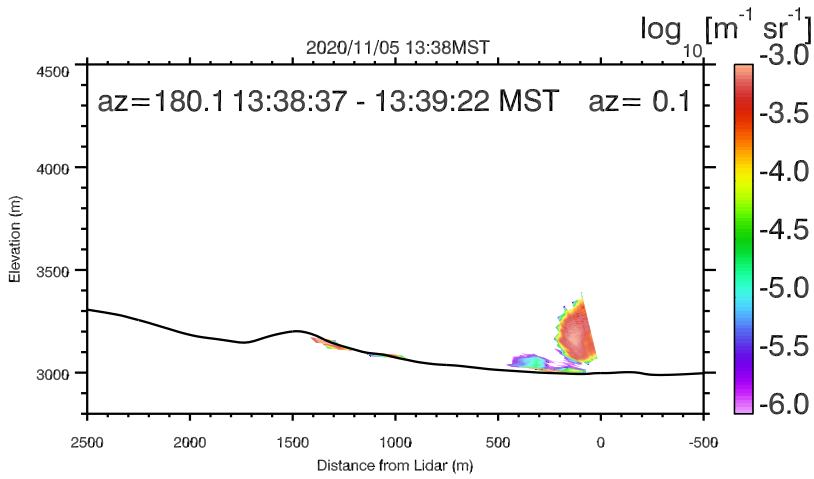
UNR LIDAR - FASMEE/ANNABELLA [Sebastian Hoch]  
 Elev. angle range: -0.-74. Azimuth range: 145.-145.  
 Gate Len [m]: 30.



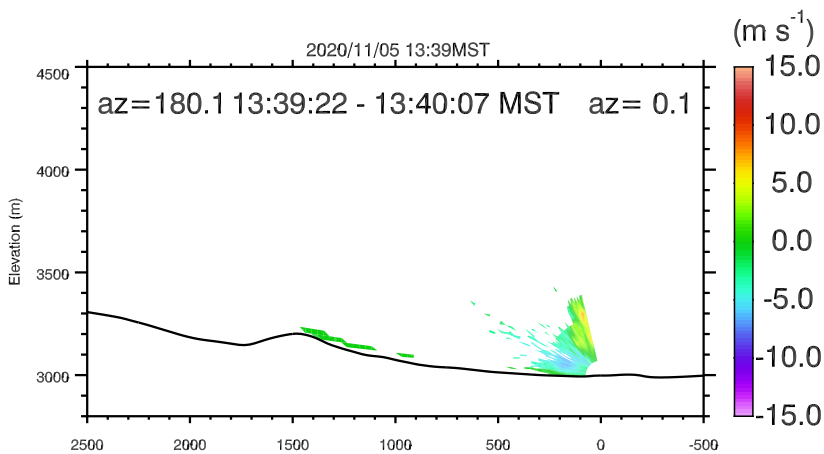
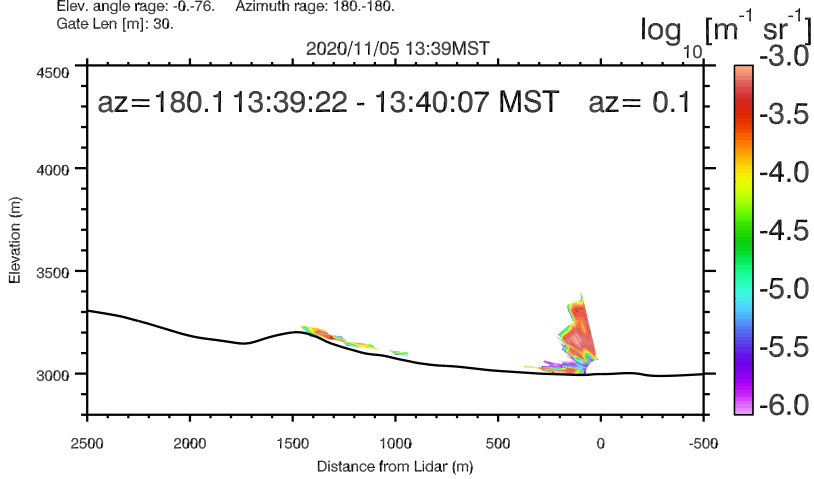
UNR LIDAR - FASMEE/ANNABELLA [Sebastian Hoch]  
 Elev. angle rage: -0.-74. Azimuth rage: 145.-145.  
 Gate Len [m]: 30.



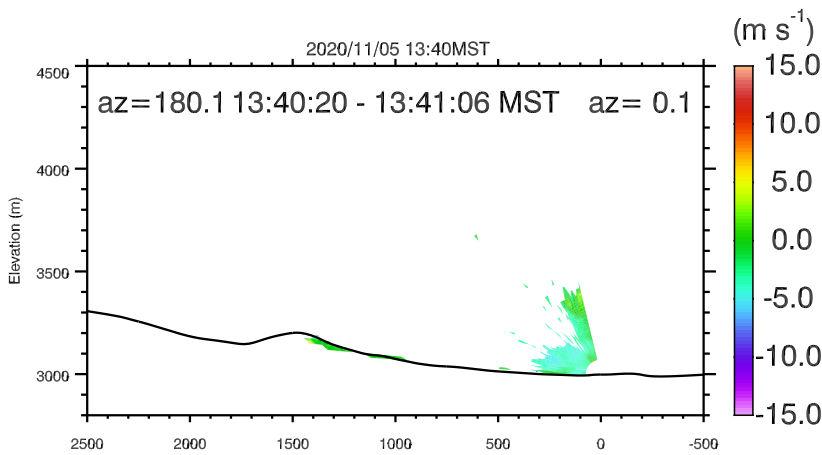
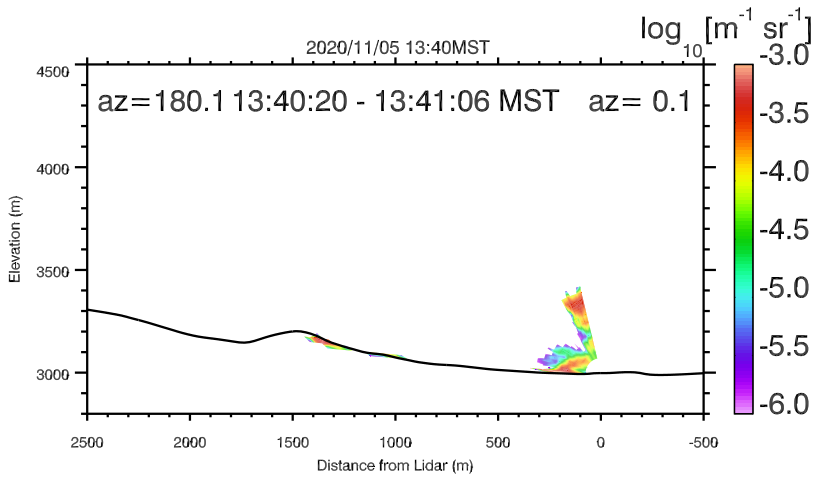
UNR LIDAR - FASMEE/ANNABELLA [Sebastian Hoch]  
 Elev. angle rage: -0.-74. Azimuth rage: 145.-145.  
 Gate Len [m]: 30.



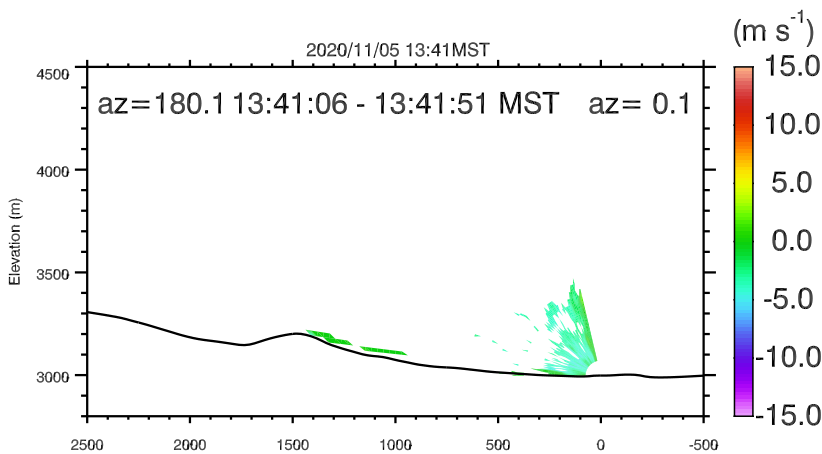
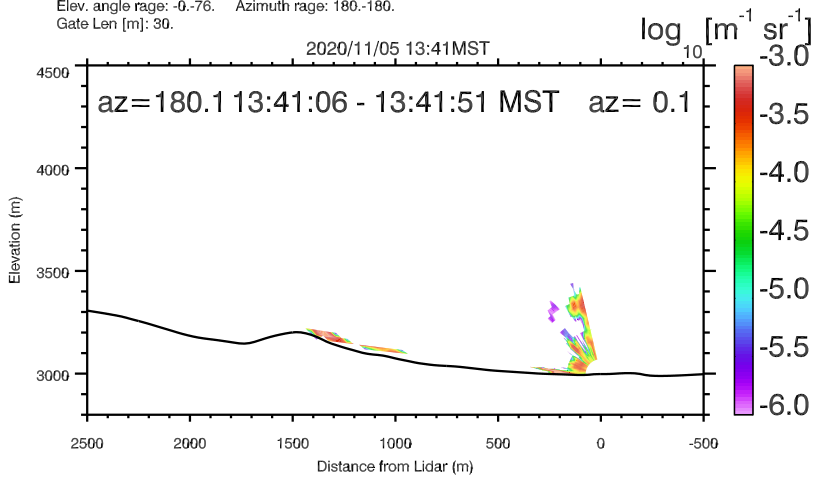
UNR LIDAR - FASMEE/ANNABELLA [Sebastian Hoch]  
 Elev. angle range: -0.-76. Azimuth range: 180.-180.  
 Gate Len [m]: 30.



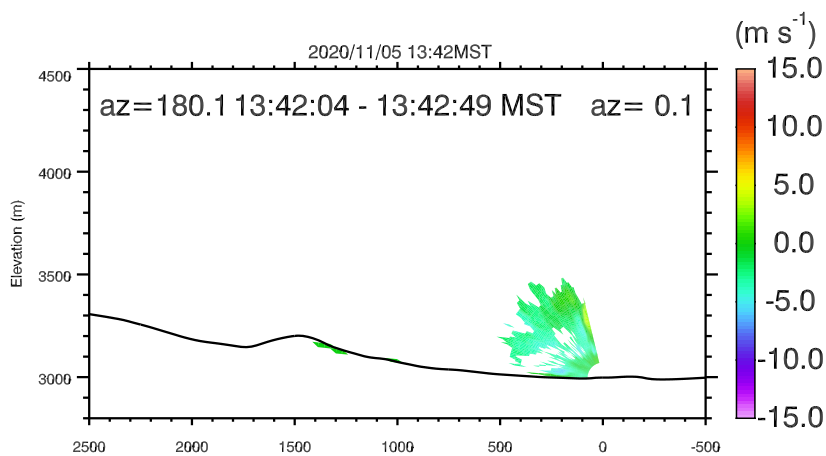
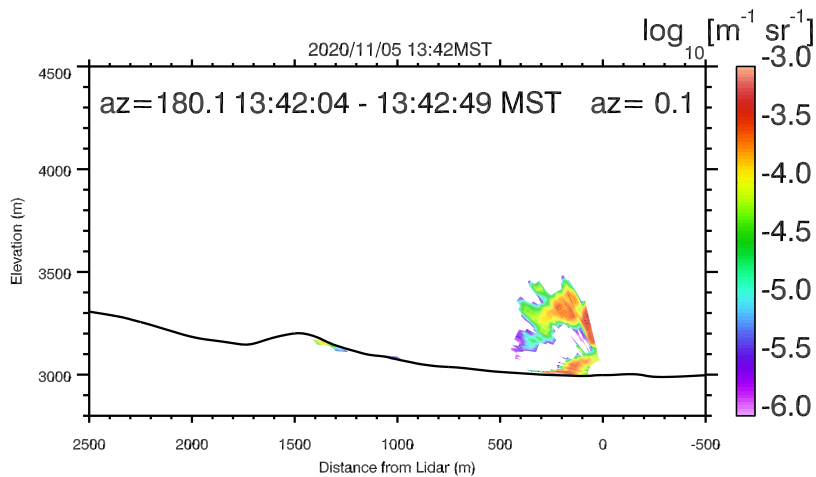
UNR LIDAR - FASMEE/ANNABELLA [Sebastian Hoch]  
 Elev. angle range: -0.-76. Azimuth range: 180.-180.  
 Gate Len [m]: 30.



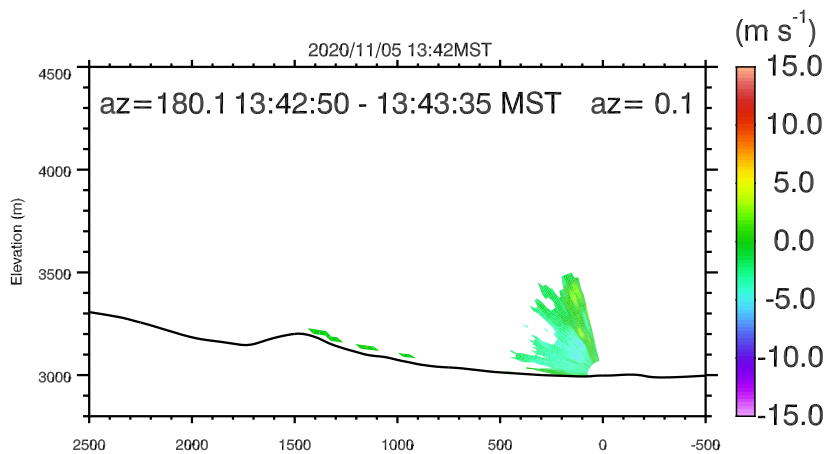
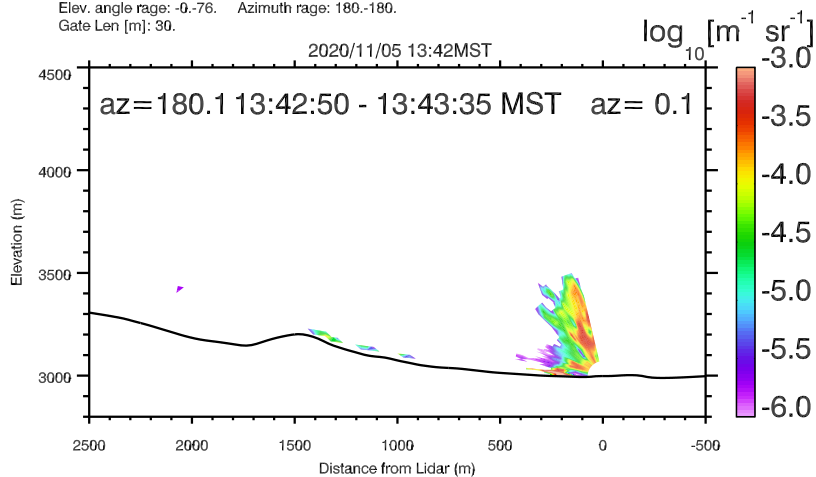
UNR LIDAR - FASMEE/ANNABELLA [Sebastian Hoch]  
 Elev. angle range: -0.-76. Azimuth range: 180.-180.  
 Gate Len [m]: 30.



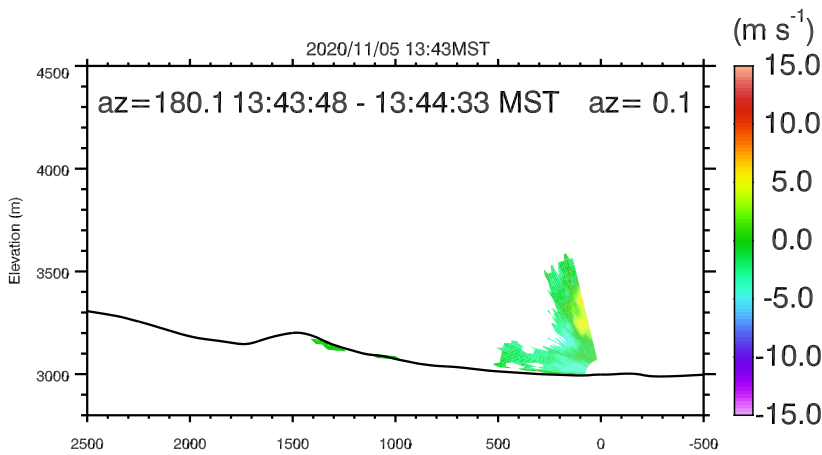
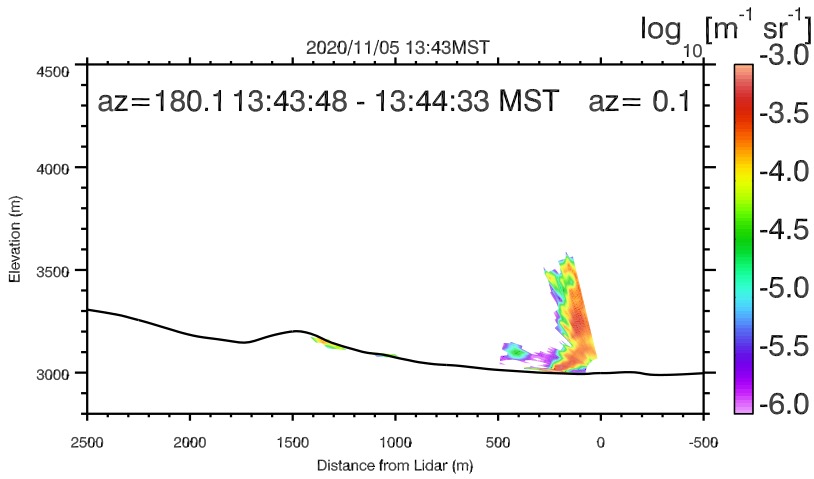
UNR LIDAR - FASMEE/ANNABELLA [Sebastian Hoch]  
 Elev. angle range: -0.-76. Azimuth range: 180.-180.  
 Gate Len [m]: 30.



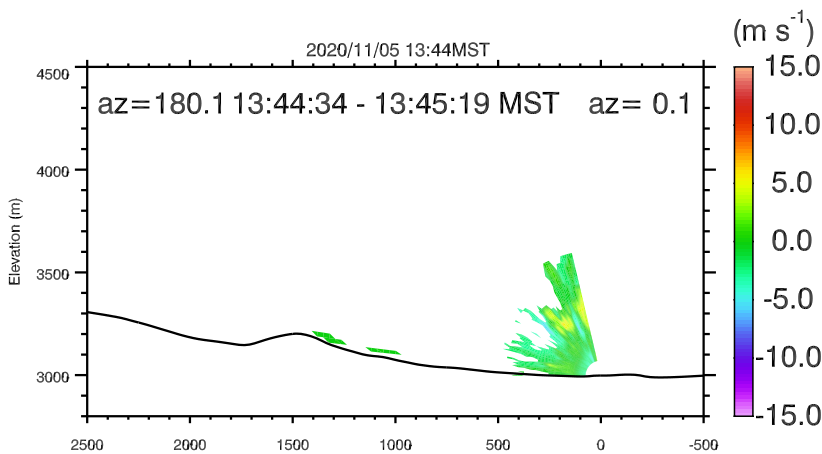
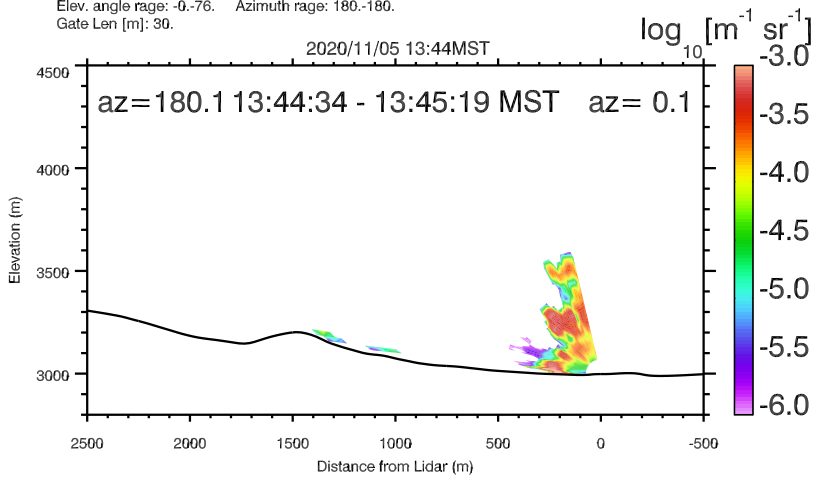
UNR LIDAR - FASMEE/ANNABELLA [Sebastian Hoch]  
 Elev. angle range: -0.-76. Azimuth range: 180.-180.  
 Gate Len [m]: 30.



UNR LIDAR - FASMEE/ANNABELLA [Sebastian Hoch]  
 Elev. angle range: -0.-76. Azimuth range: 180.-180.  
 Gate Len [m]: 30.

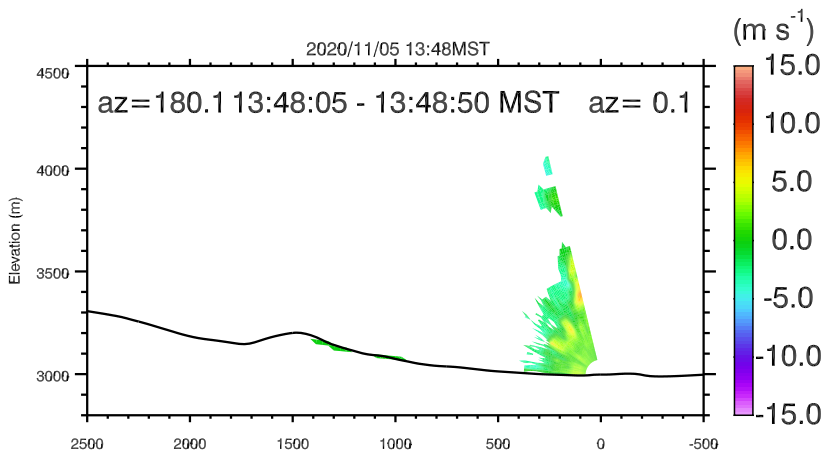
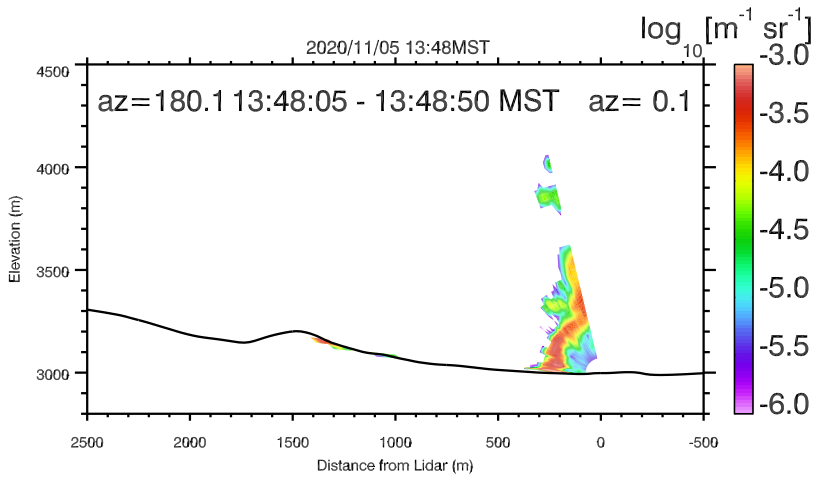


UNR LIDAR - FASMEE/ANNABELLA [Sebastian Hoch]  
 Elev. angle range: -0.-76. Azimuth range: 180.-180.  
 Gate Len [m]: 30.

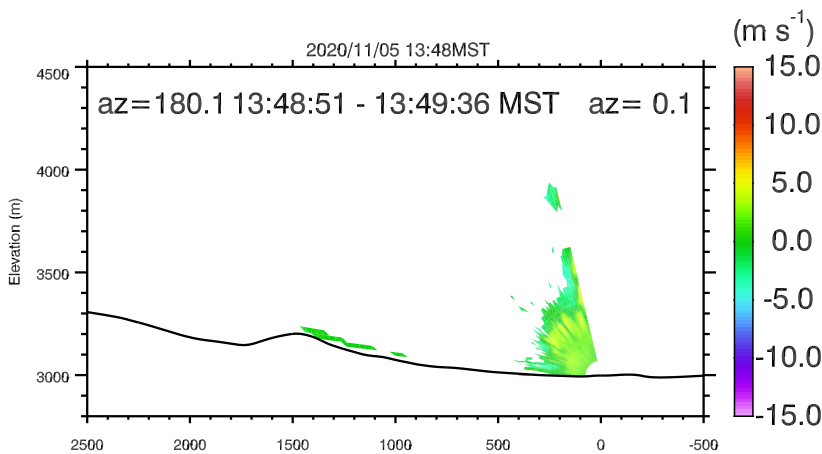
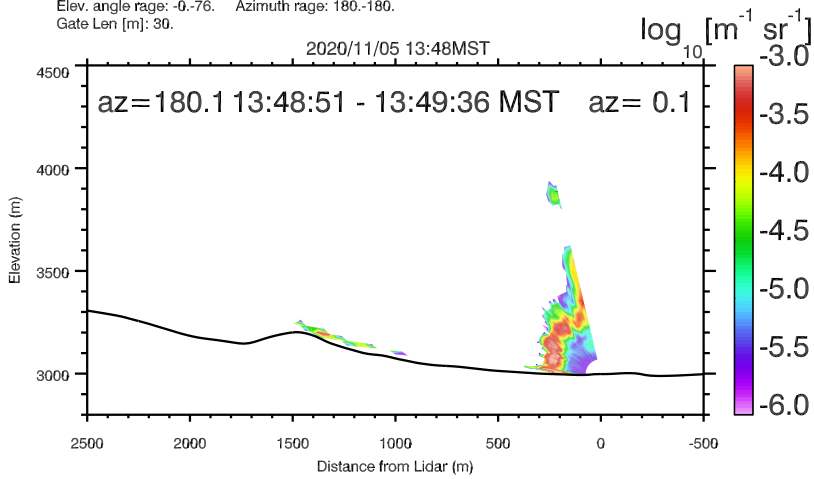


UNR LIDAR - FASMEE/ANNABELLA [Sebastian Hoch]  
 Elev. angle range: -0.-76. Azimuth range: 180.-180.  
 Gate Len [m]: 30.

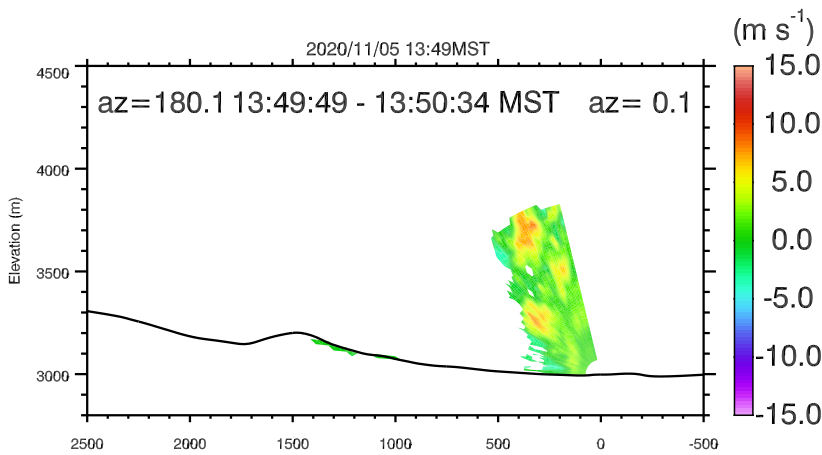
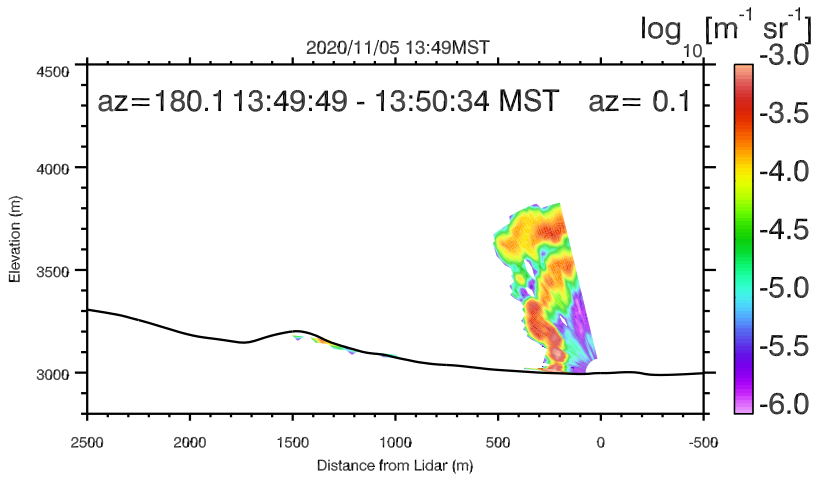




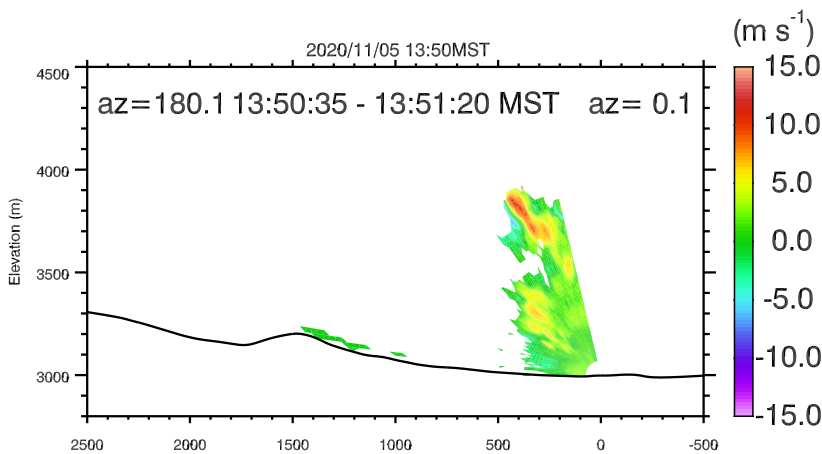
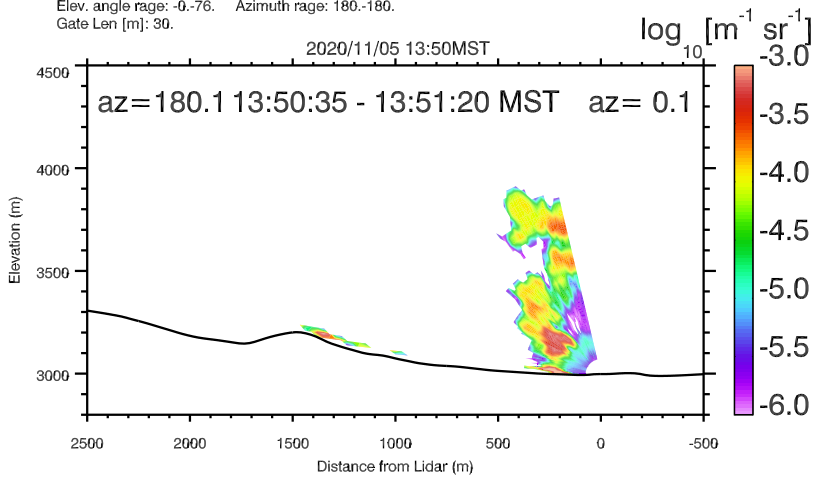
UNR LIDAR - FASMEE/ANNABELLA [Sebastian Hoch]  
 Elev. angle range: -0.76. Azimuth range: 180.-180.  
 Gate Len [m]: 30.



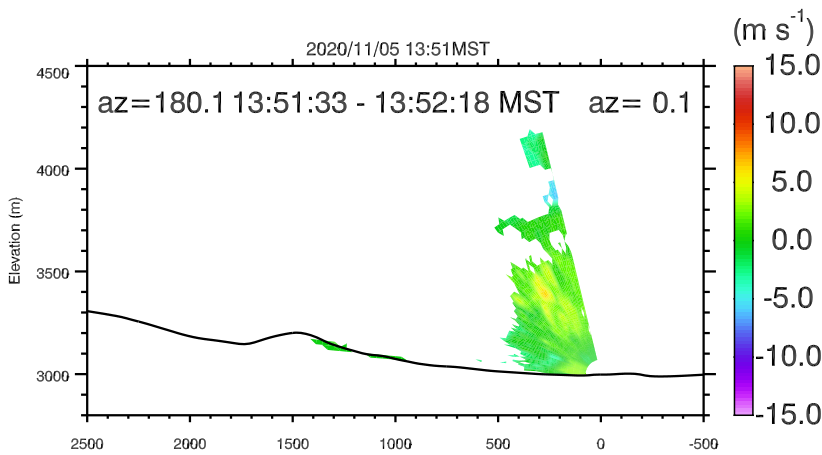
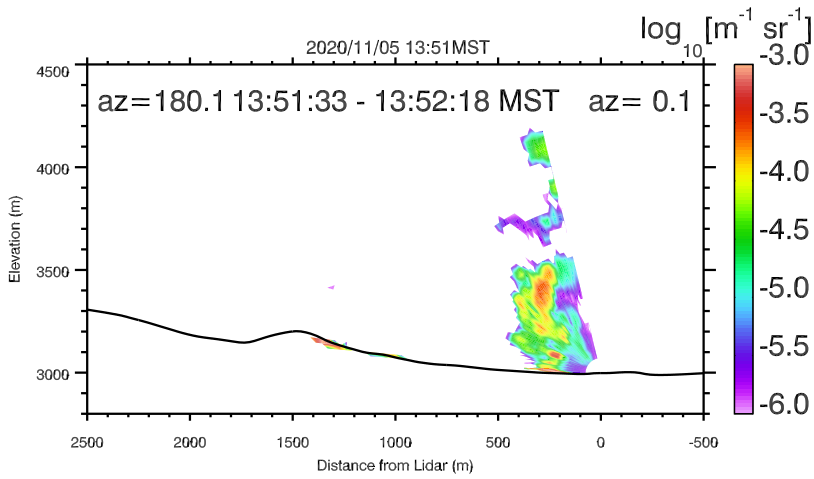
UNR LIDAR - FASMEE/ANNABELLA [Sebastian Hoch]  
 Elev. angle range: -0.76. Azimuth range: 180.-180.  
 Gate Len [m]: 30.



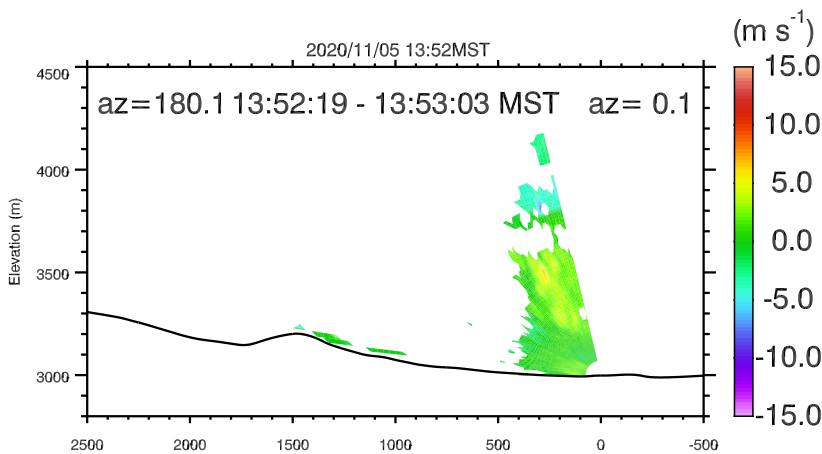
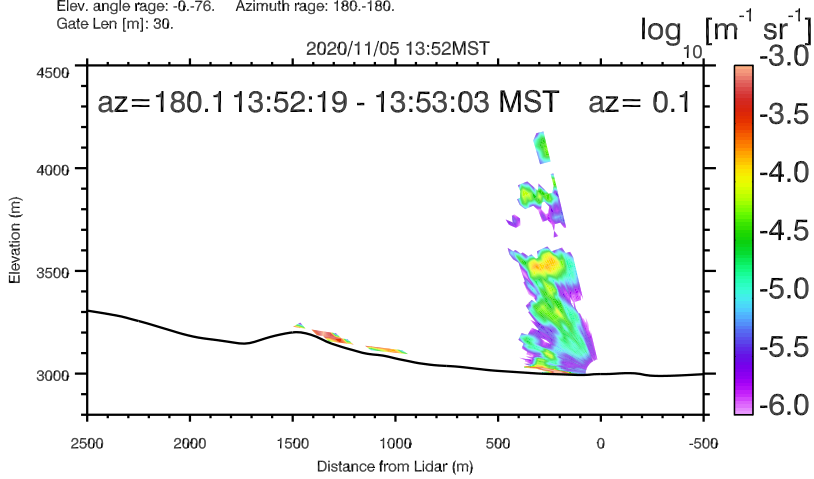
UNR LIDAR - FASMEE/ANNABELLA [Sebastian Hoch]  
 Elev. angle range: -0.-76. Azimuth range: 180.-180.  
 Gate Len [m]: 30.



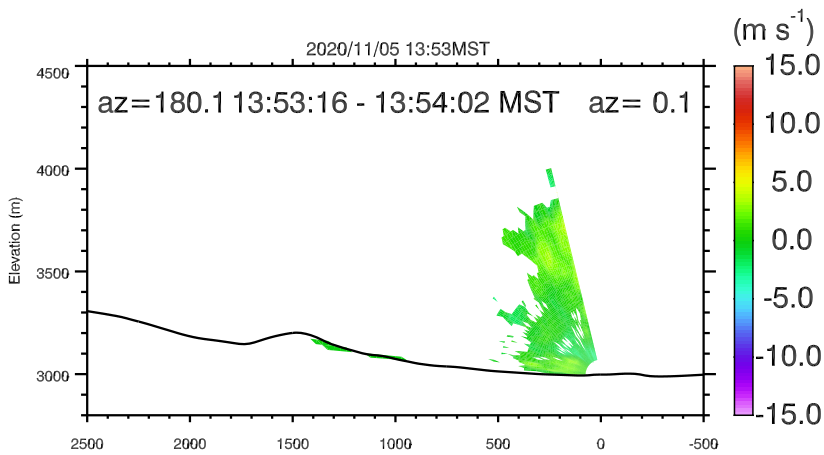
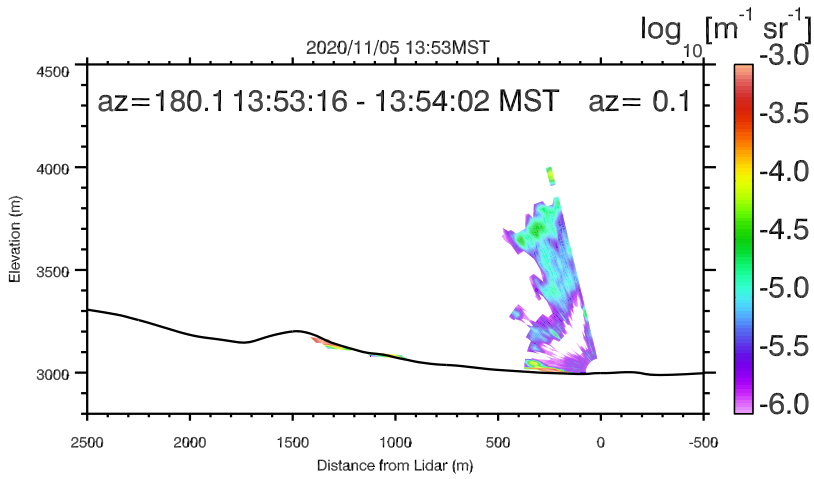
UNR LIDAR - FASMEE/ANNABELLA [Sebastian Hoch]  
 Elev. angle range: -0.-76. Azimuth range: 180.-180.  
 Gate Len [m]: 30.



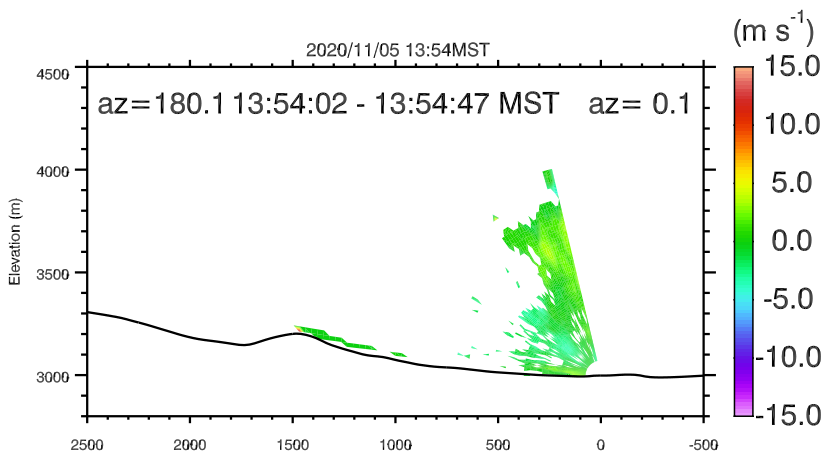
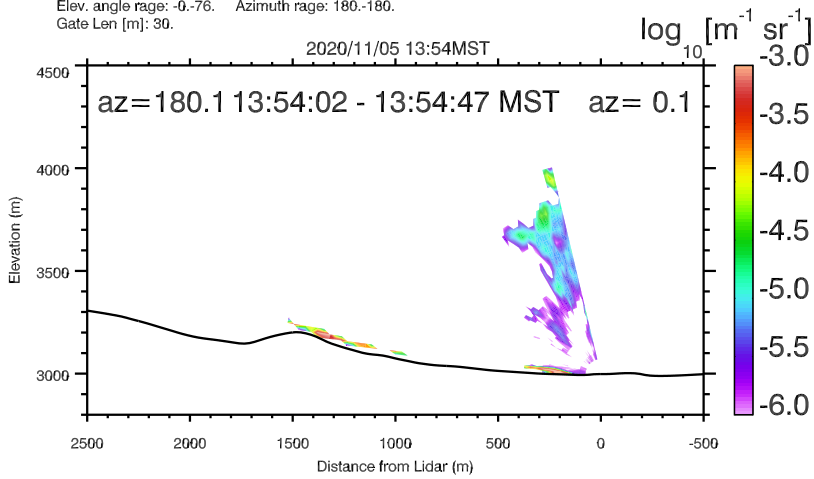
UNR LIDAR - FASMEE/ANNABELLA [Sebastian Hoch]  
 Elev. angle range: -0.-76. Azimuth range: 180.-180.  
 Gate Len [m]: 30.



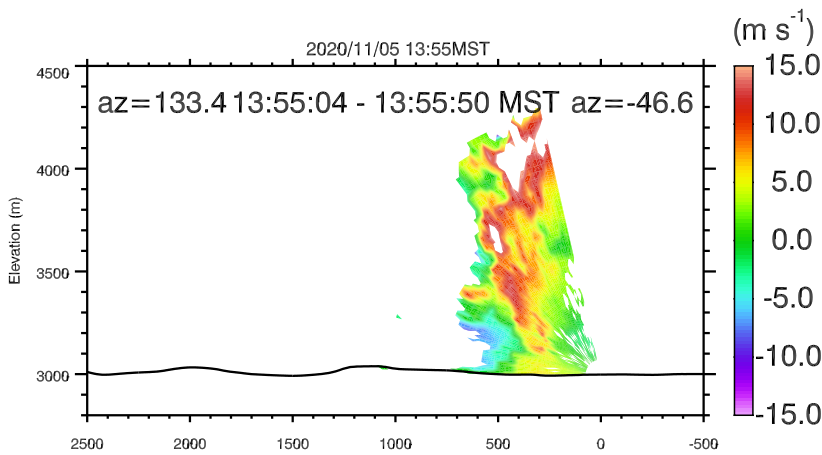
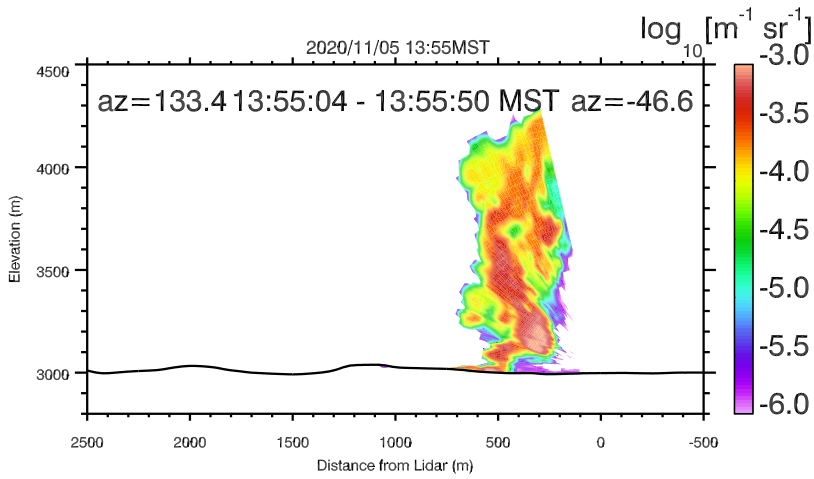
UNR LIDAR - FASMEE/ANNABELLA [Sebastian Hoch]  
 Elev. angle range: -0.-76. Azimuth range: 180.-180.  
 Gate Len [m]: 30.



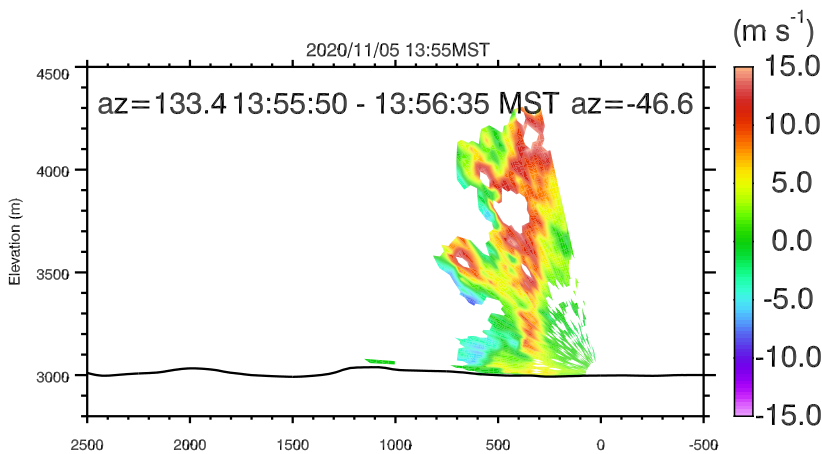
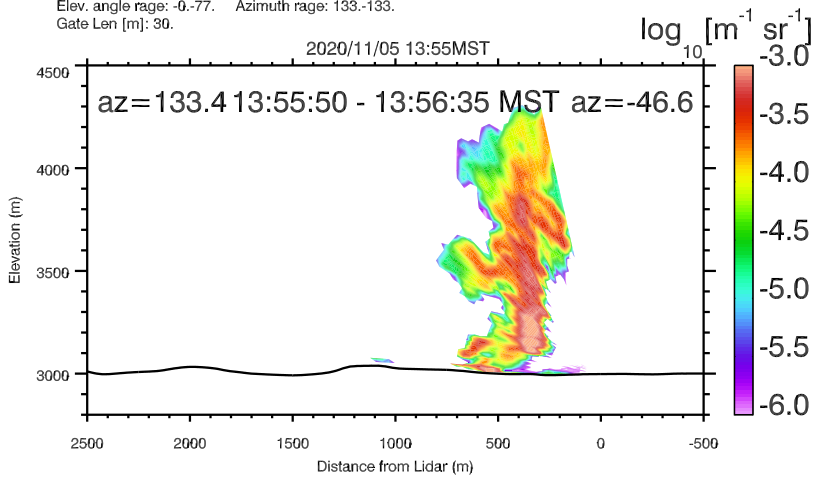
UNR LIDAR - FASMEE/ANNABELLA [Sebastian Hoch]  
 Elev. angle range: -0.76. Azimuth range: 180.-180.  
 Gate Len [m]: 30.



UNR LIDAR - FASMEE/ANNABELLA [Sebastian Hoch]  
 Elev. angle range: -0.76. Azimuth range: 180.-180.  
 Gate Len [m]: 30.



UNR LIDAR - FASMEE/ANNABELLA [Sebastian Hoch]  
 Elev. angle range: -0.-77. Azimuth range: 133.-133.  
 Gate Len [m]: 30.



UNR LIDAR - FASMEE/ANNABELLA [Sebastian Hoch]  
 Elev. angle range: -0.-77. Azimuth range: 133.-133.  
 Gate Len [m]: 30.