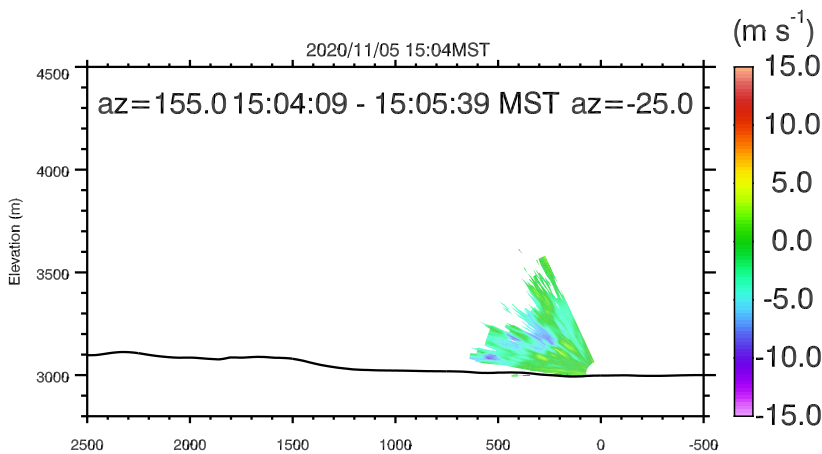
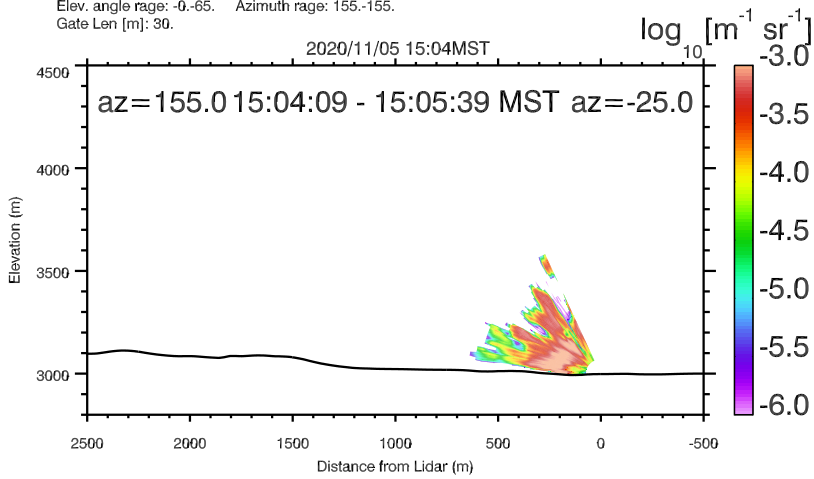
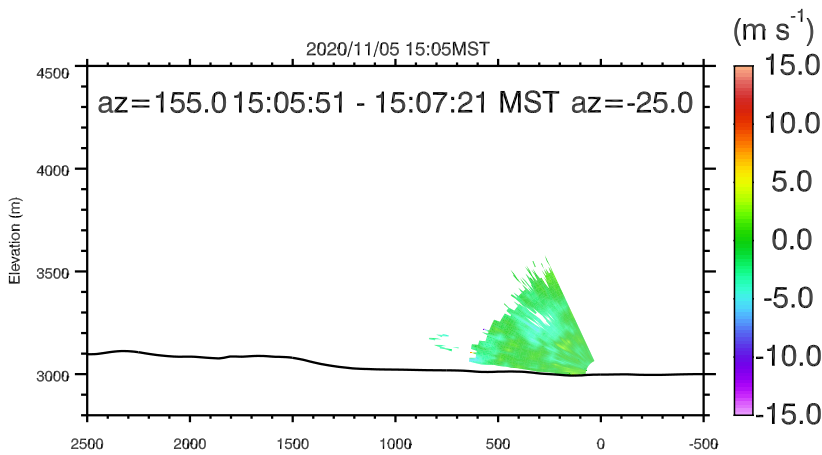
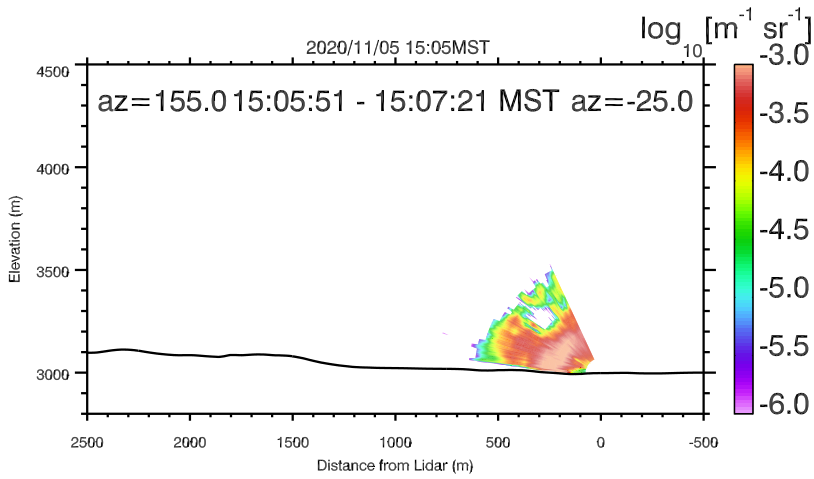


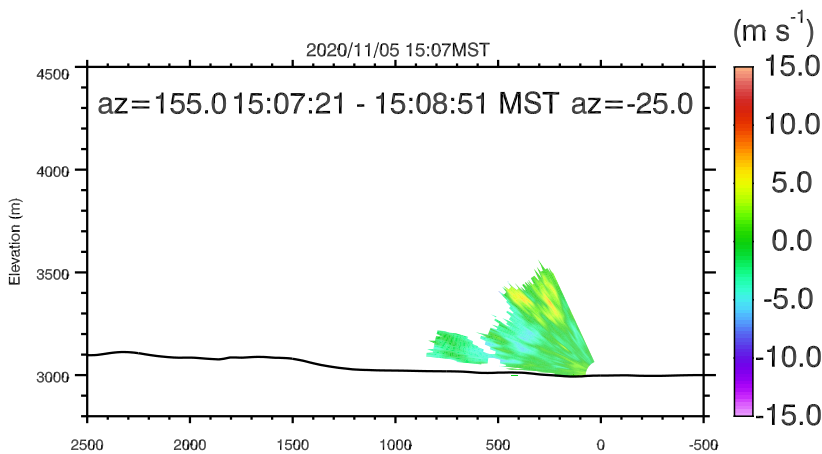
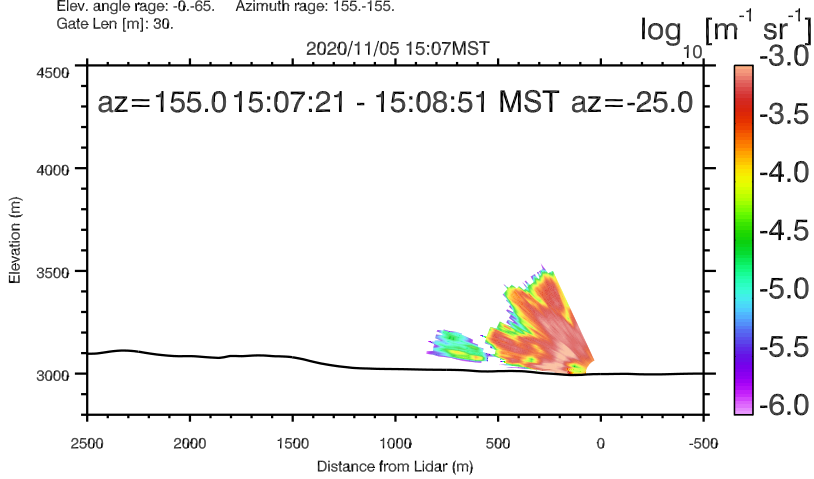
UNR LIDAR - FASMEE/ANNABELLA [Sebastian Hoch]
 Elev. angle rage: -0.-65. Azimuth rage: 155.-155.
 Gate Len [m]: 30.



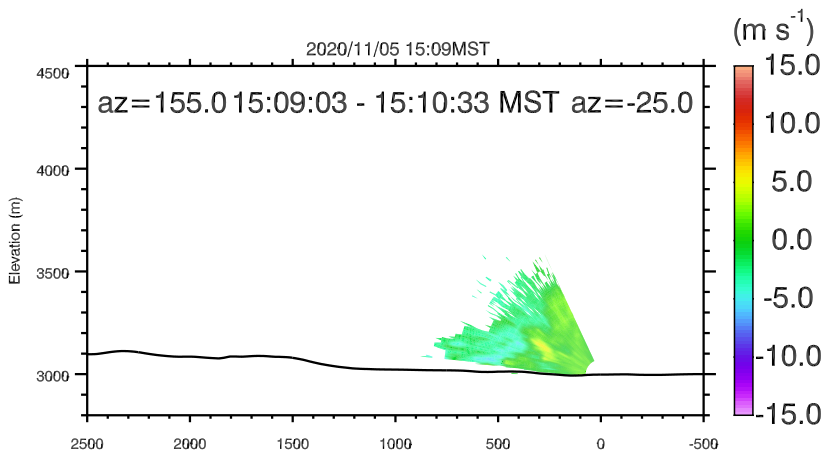
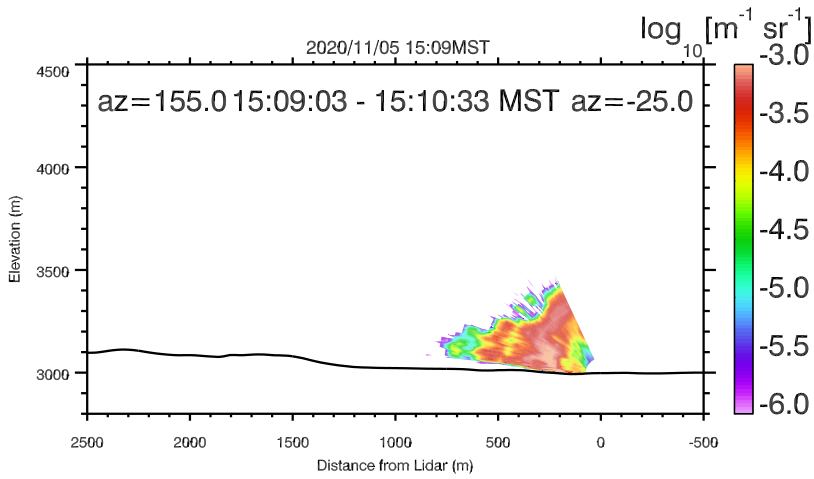
UNR LIDAR - FASMEE/ANNABELLA [Sebastian Hoch]
 Elev. angle rage: -0.-65. Azimuth rage: 155.-155.
 Gate Len [m]: 30.



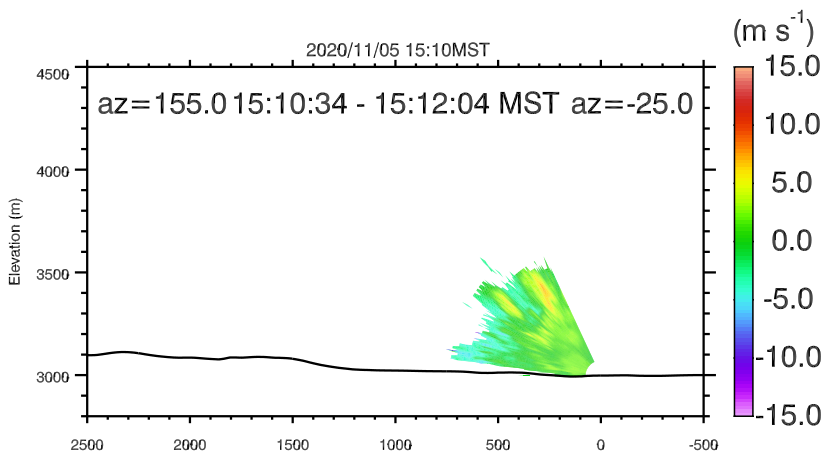
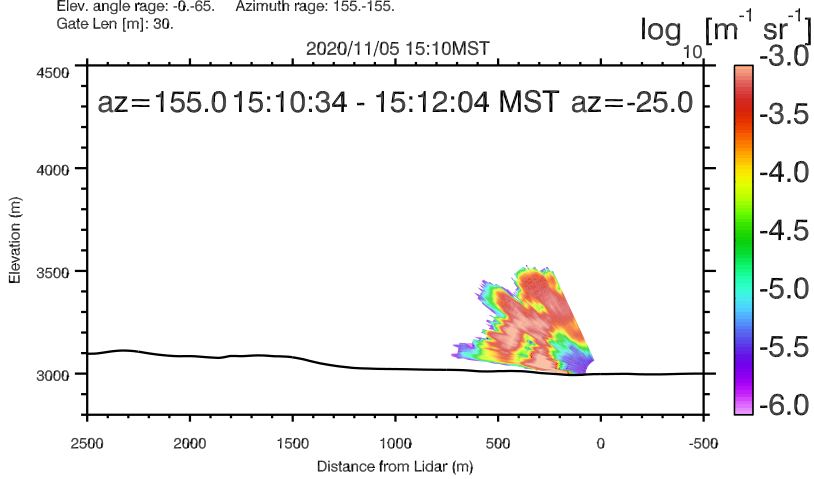
UNR LIDAR - FASMEE/ANNABELLA [Sebastian Hoch]
 Elev. angle range: -0.-65. Azimuth range: 155.-155.
 Gate Len [m]: 30.



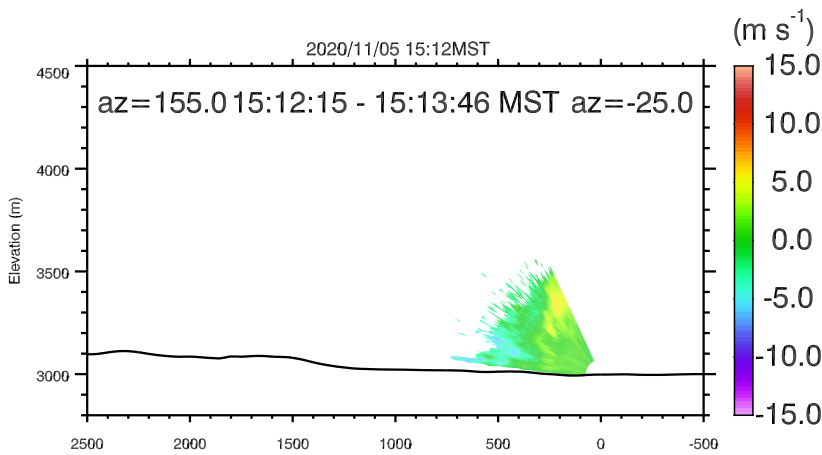
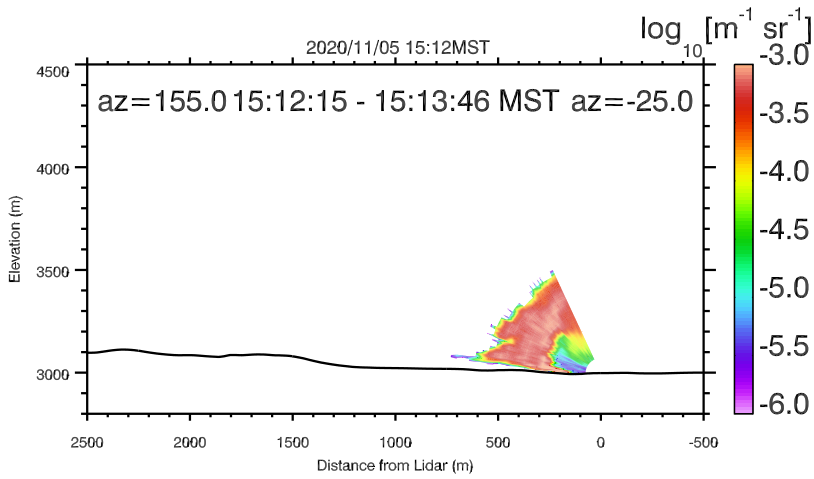
UNR LIDAR - FASMEE/ANNABELLA [Sebastian Hoch]
 Elev. angle range: -0.-65. Azimuth range: 155.-155.
 Gate Len [m]: 30.



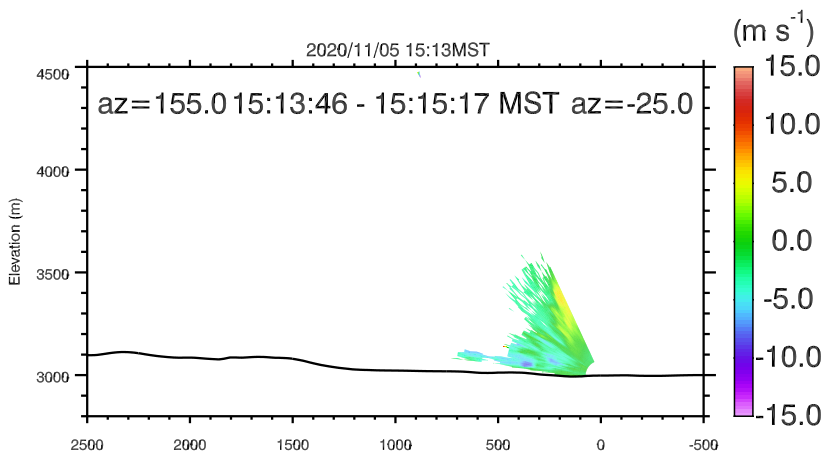
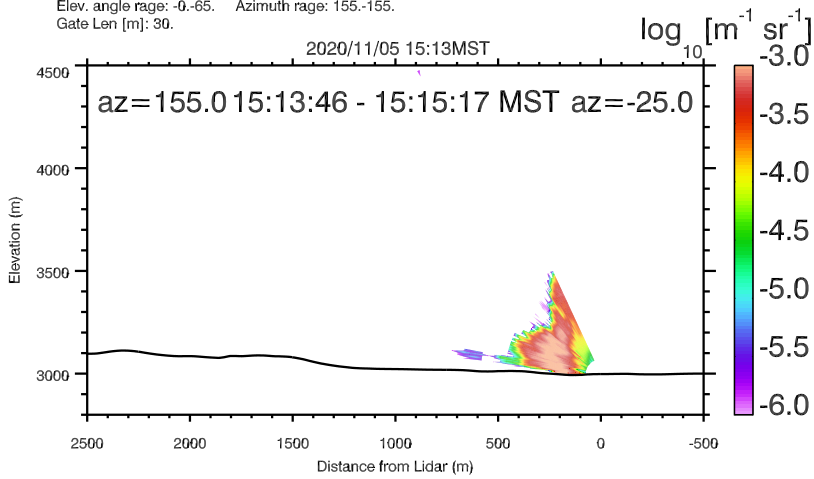
UNR LIDAR - FASMEE/ANNABELLA [Sebastian Hoch]
 Elev. angle range: -0.-65. Azimuth range: 155.-155.
 Gate Len [m]: 30.



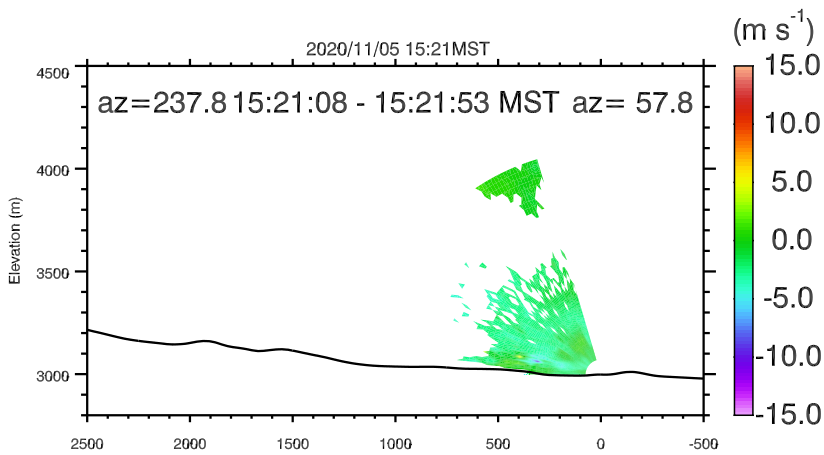
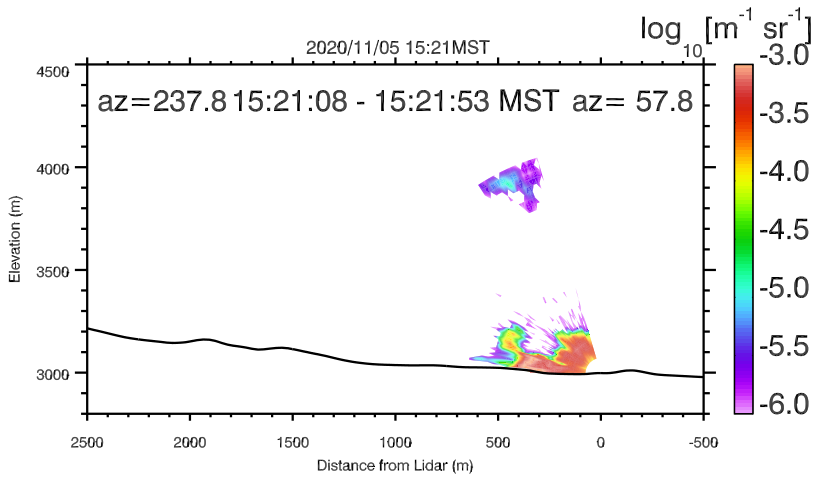
UNR LIDAR - FASMEE/ANNABELLA [Sebastian Hoch]
 Elev. angle range: -0.-65. Azimuth range: 155.-155.
 Gate Len [m]: 30.



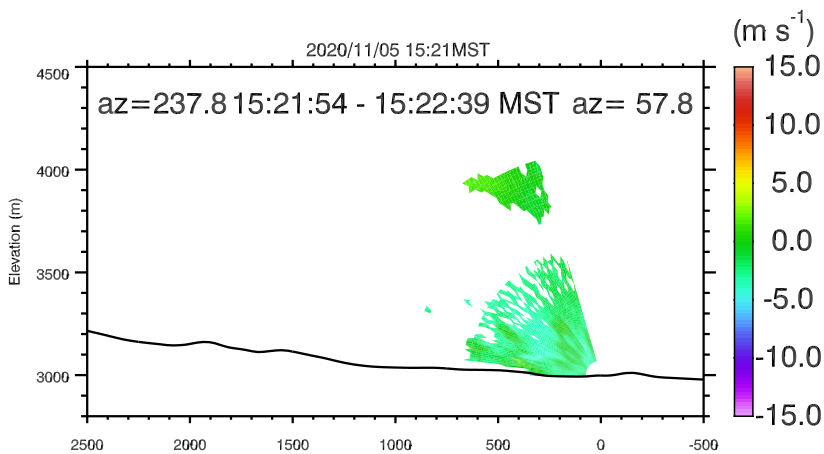
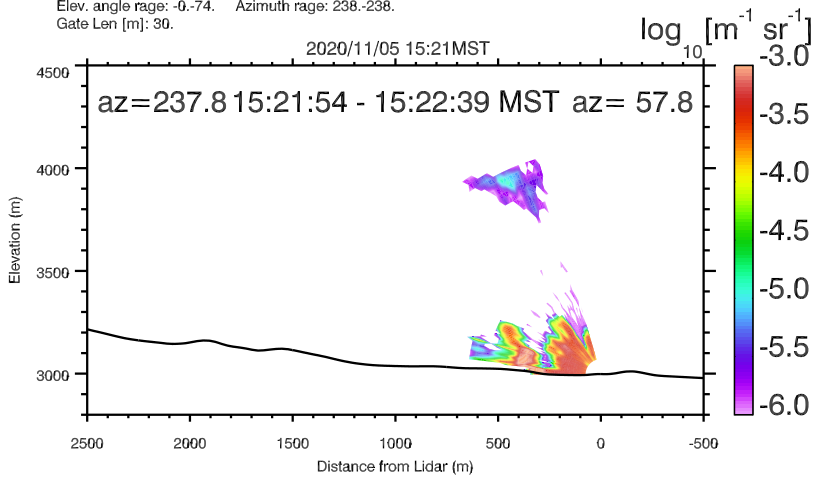
UNR LIDAR - FASMEE/ANNABELLA [Sebastian Hoch]
 Elev. angle range: -0.-65. Azimuth range: 155.-155.
 Gate Len [m]: 30.



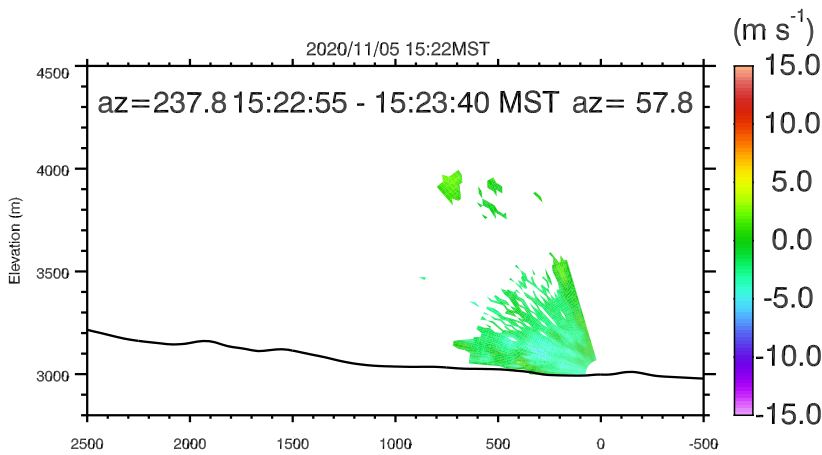
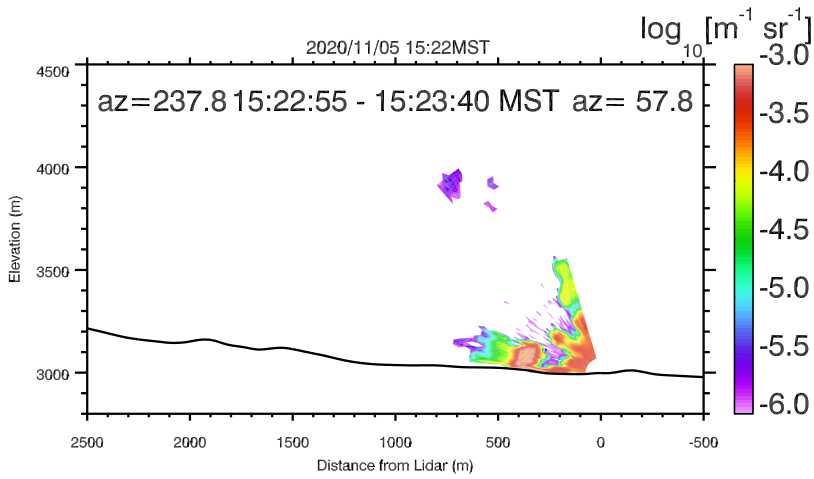
UNR LIDAR - FASMEE/ANNABELLA [Sebastian Hoch]
 Elev. angle range: -0.-65. Azimuth range: 155.-155.
 Gate Len [m]: 30.



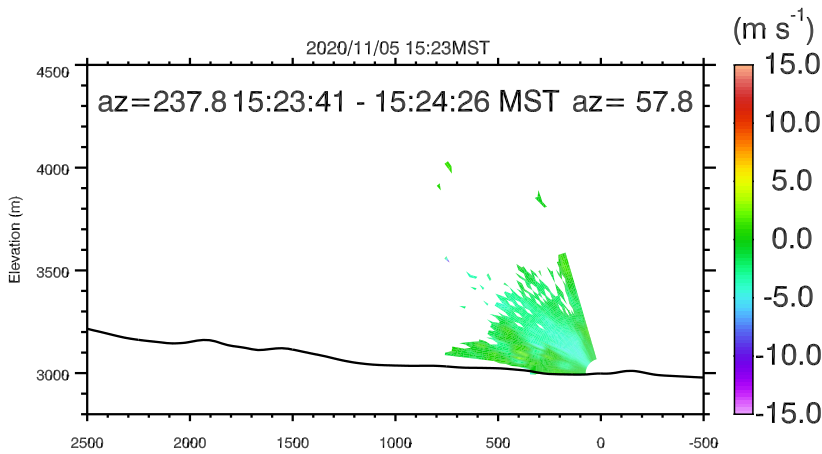
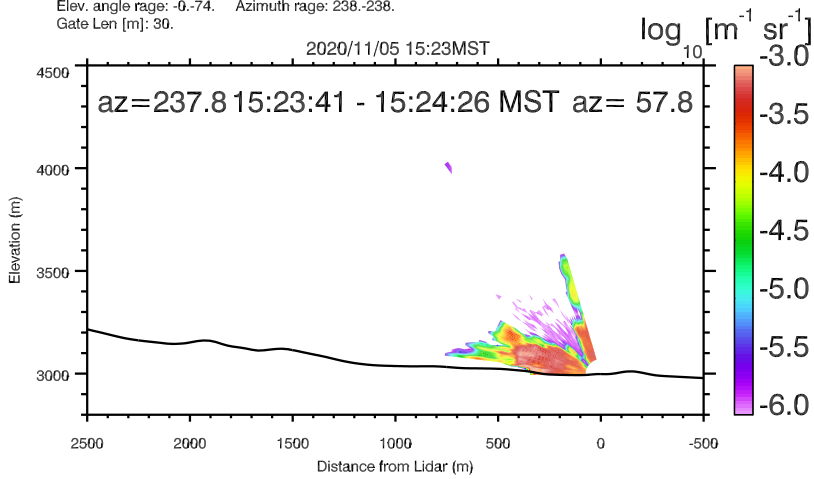
UNR LIDAR - FASMEE/ANNABELLA [Sebastian Hoch]
 Elev. angle rage: -0.-74. Azimuth rage: 238.-238.
 Gate Len [m]: 30.



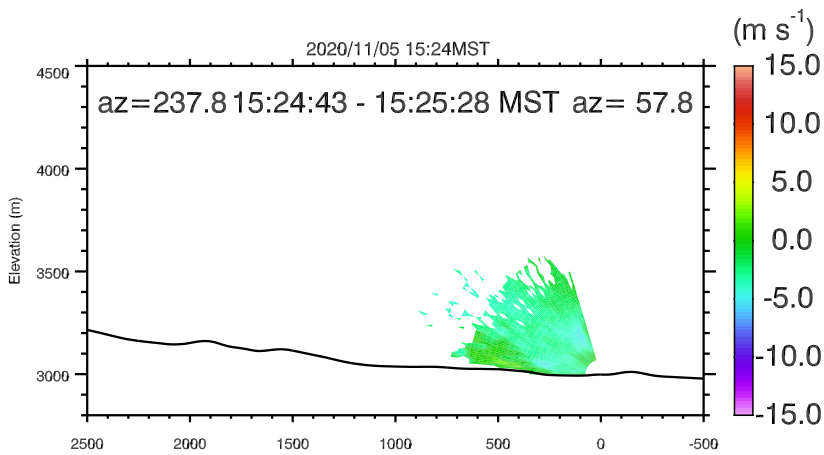
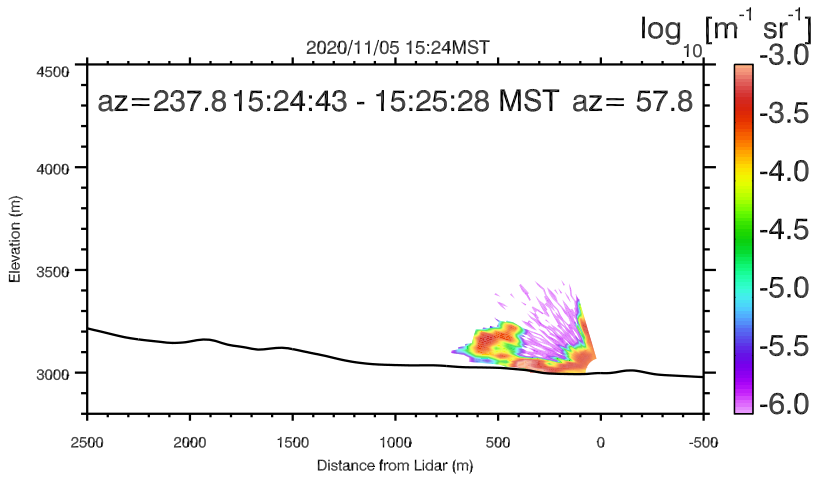
UNR LIDAR - FASMEE/ANNABELLA [Sebastian Hoch]
 Elev. angle rage: -0.-74. Azimuth rage: 238.-238.
 Gate Len [m]: 30.



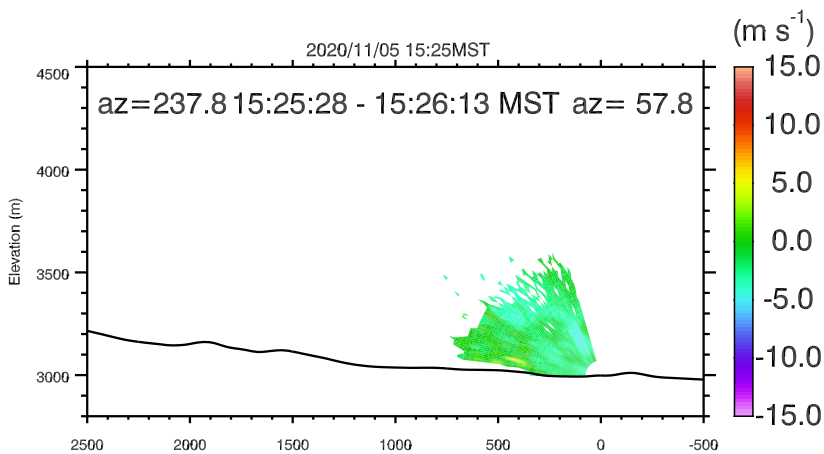
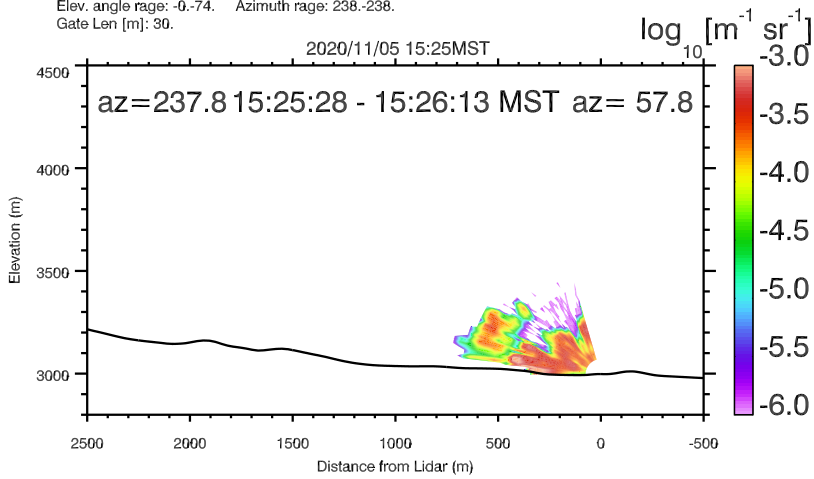
UNR LIDAR - FASMEE/ANNABELLA [Sebastian Hoch]
 Elev. angle rage: -0.-74. Azimuth rage: 238.-238.
 Gate Len [m]: 30.



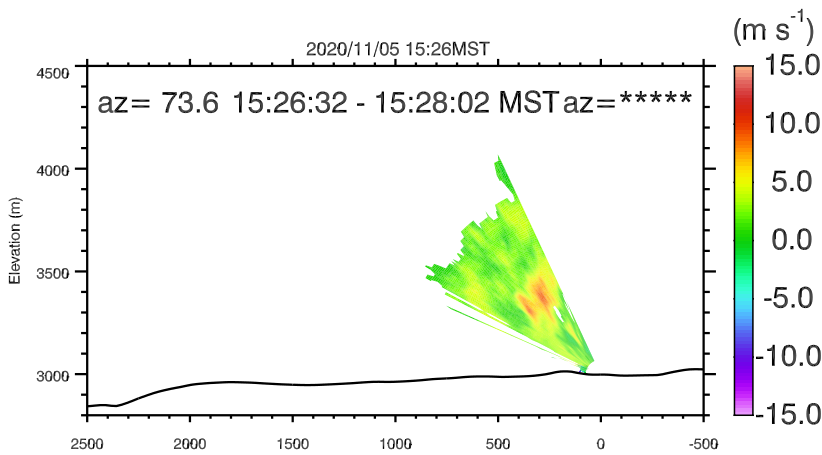
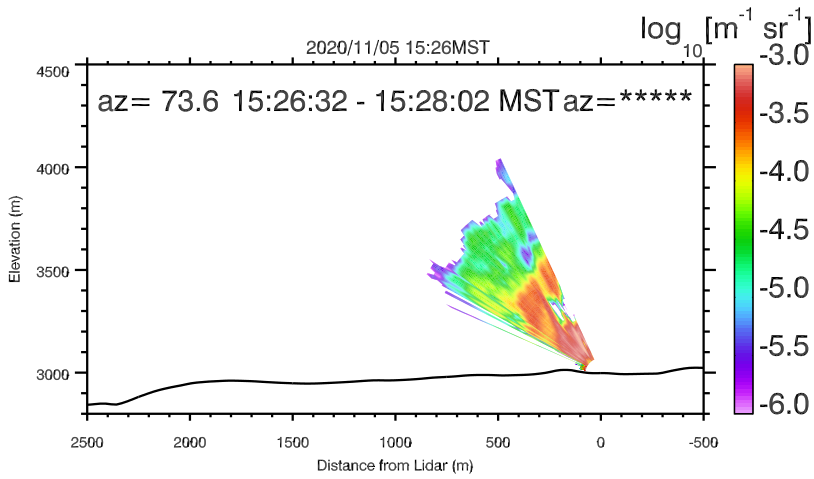
UNR LIDAR - FASMEE/ANNABELLA [Sebastian Hoch]
 Elev. angle rage: -0.-74. Azimuth rage: 238.-238.
 Gate Len [m]: 30.



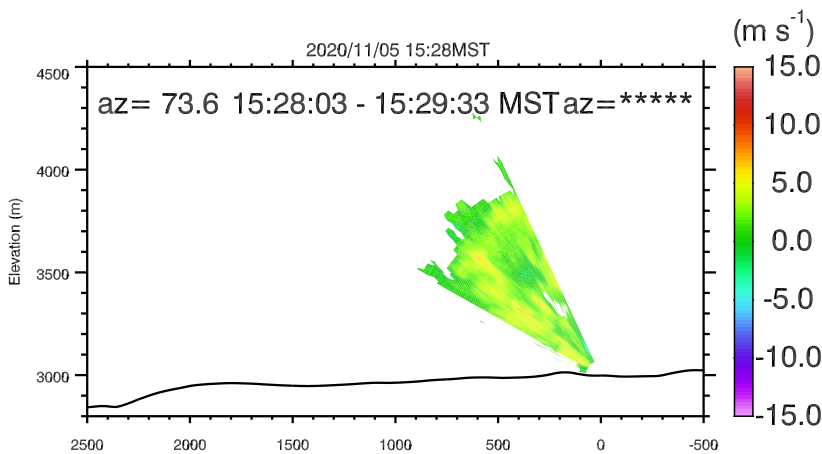
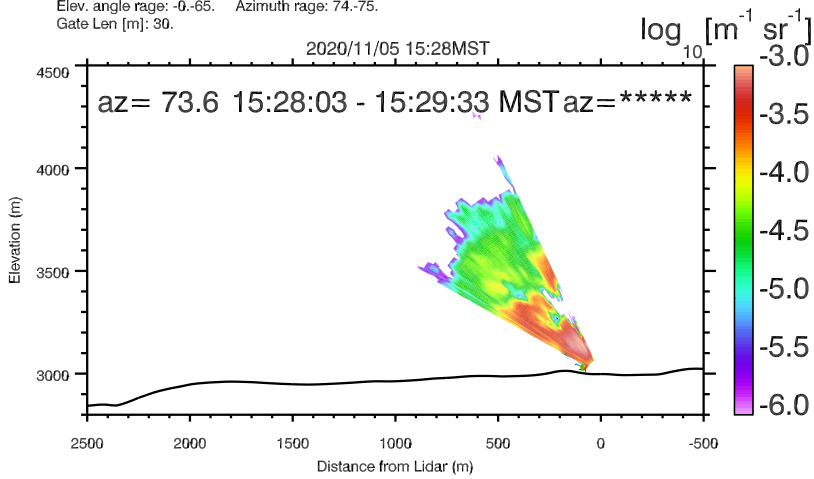
UNR LIDAR - FASMEE/ANNABELLA [Sebastian Hoch]
 Elev. angle range: -0.-74. Azimuth range: 238.-238.
 Gate Len [m]: 30.



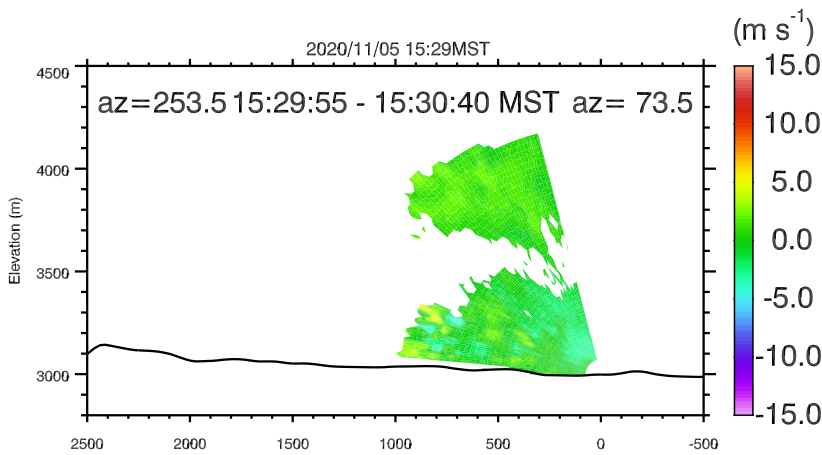
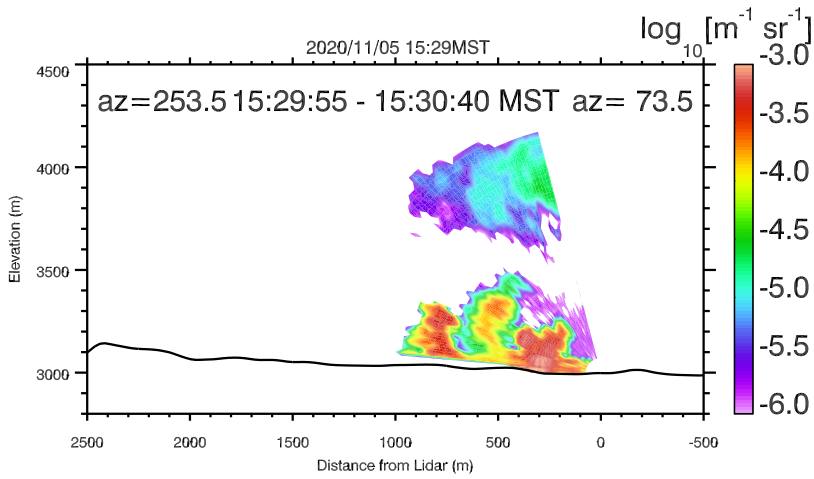
UNR LIDAR - FASMEE/ANNABELLA [Sebastian Hoch]
 Elev. angle range: -0.-74. Azimuth range: 238.-238.
 Gate Len [m]: 30.



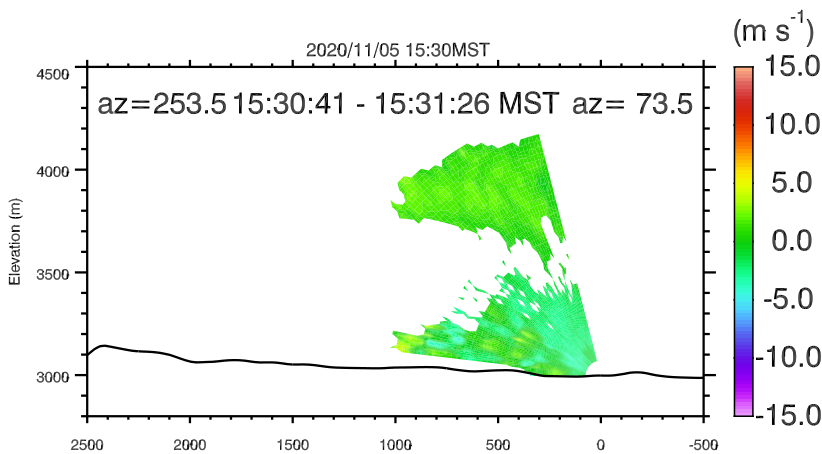
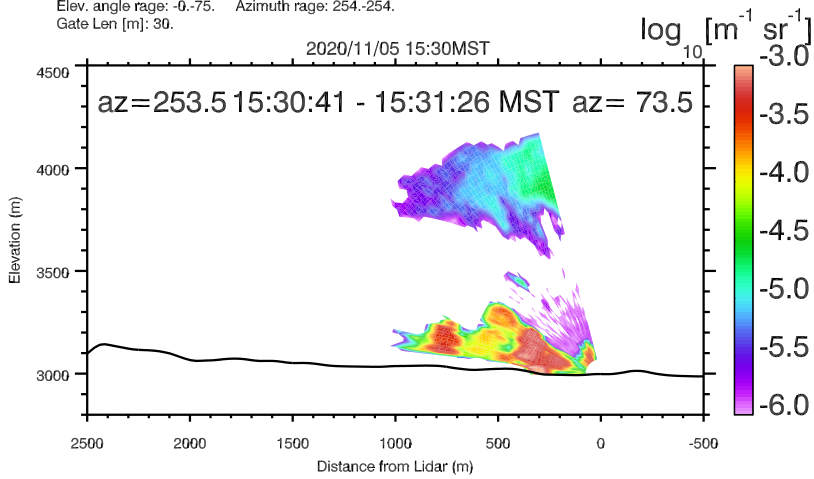
UNR LIDAR - FASMEE/ANNABELLA [Sebastian Hoch]
 Elev. angle rage: -0.-65. Azimuth rage: 74.-75.
 Gate Len [m]: 30.



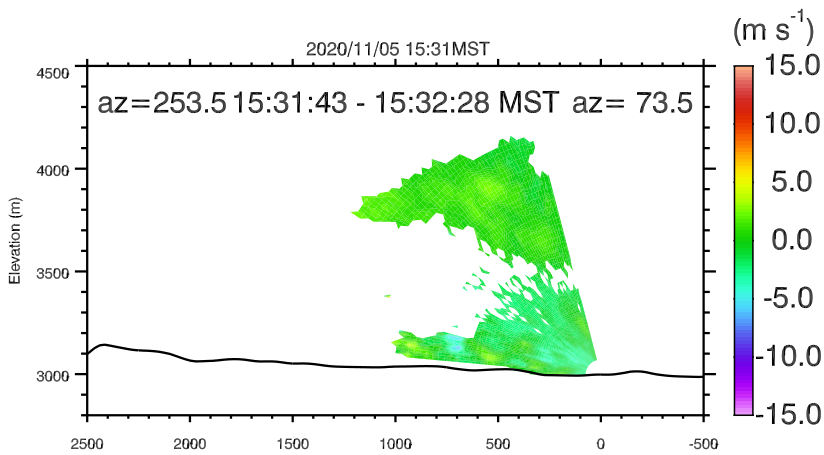
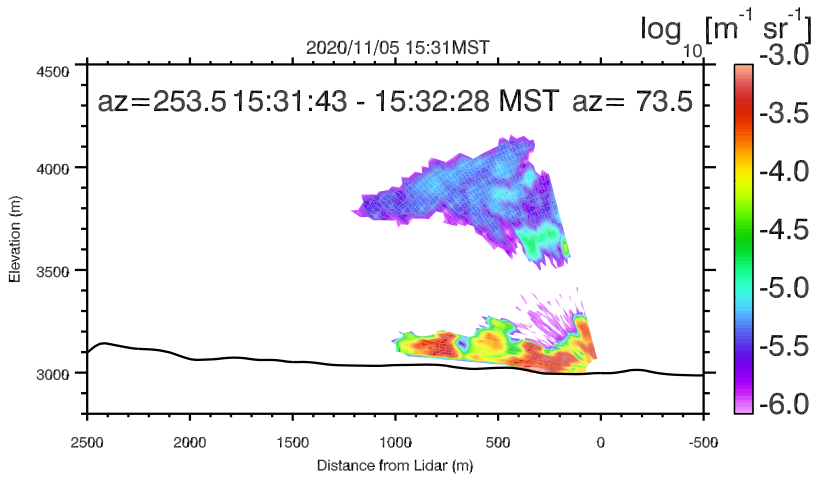
UNR LIDAR - FASMEE/ANNABELLA [Sebastian Hoch]
 Elev. angle rage: -0.-65. Azimuth rage: 74.-75.
 Gate Len [m]: 30.



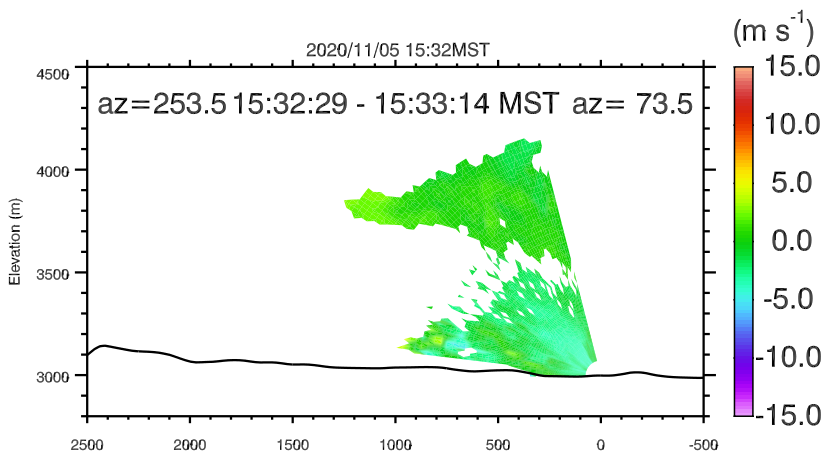
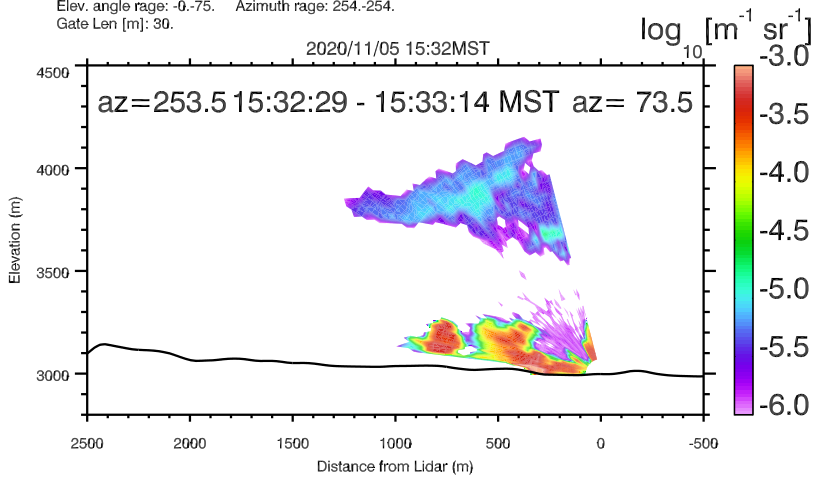
UNR LIDAR - FASMEE/ANNABELLA [Sebastian Hoch]
 Elev. angle rage: -0.-75. Azimuth rage: 254.-254.
 Gate Len [m]: 30.



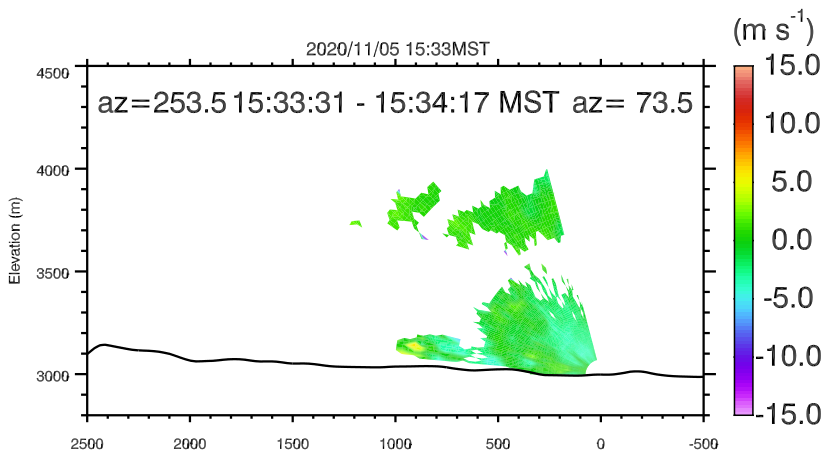
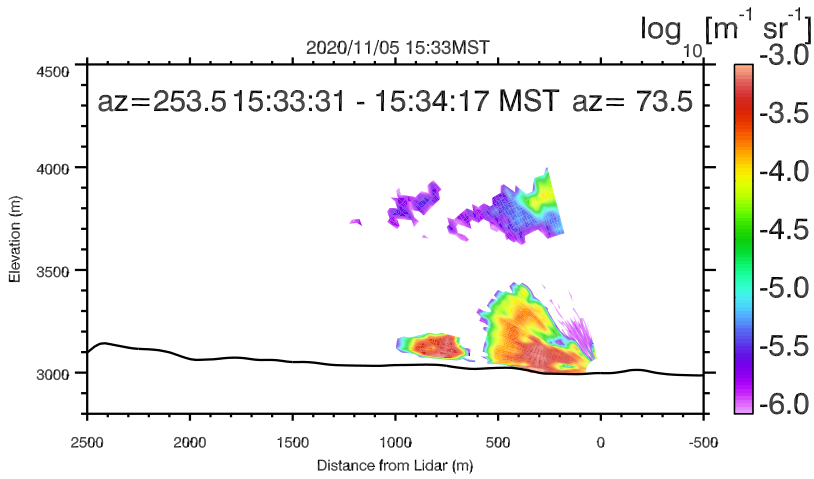
UNR LIDAR - FASMEE/ANNABELLA [Sebastian Hoch]
 Elev. angle rage: -0.-75. Azimuth rage: 254.-254.
 Gate Len [m]: 30.



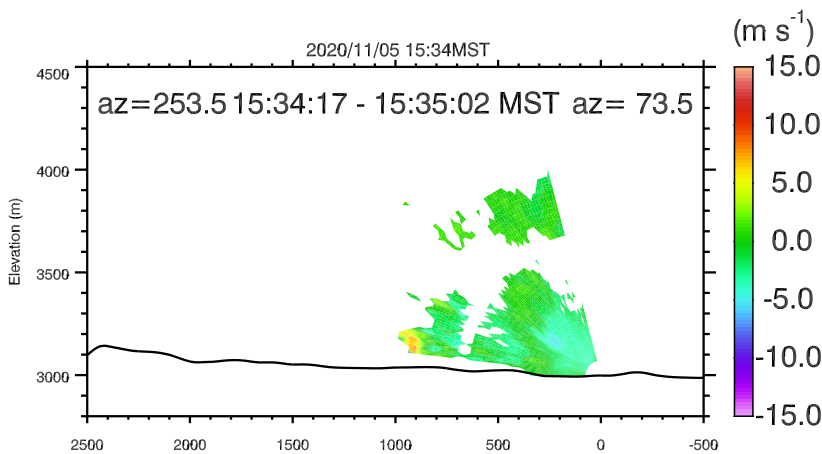
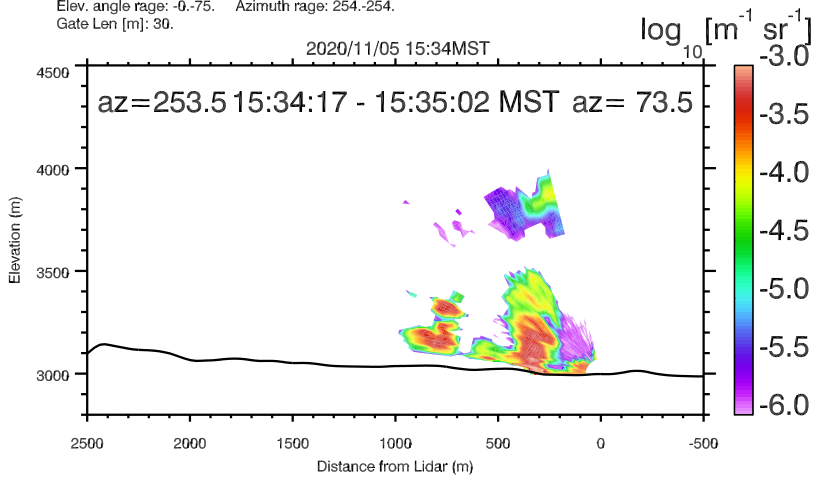
UNR LIDAR - FASMEE/ANNABELLA [Sebastian Hoch]
 Elev. angle rage: -0.-75. Azimuth rage: 254.-254.
 Gate Len [m]: 30.



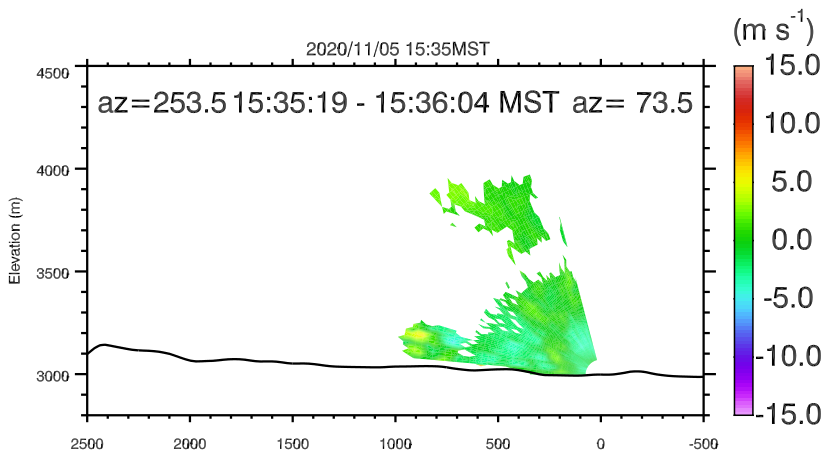
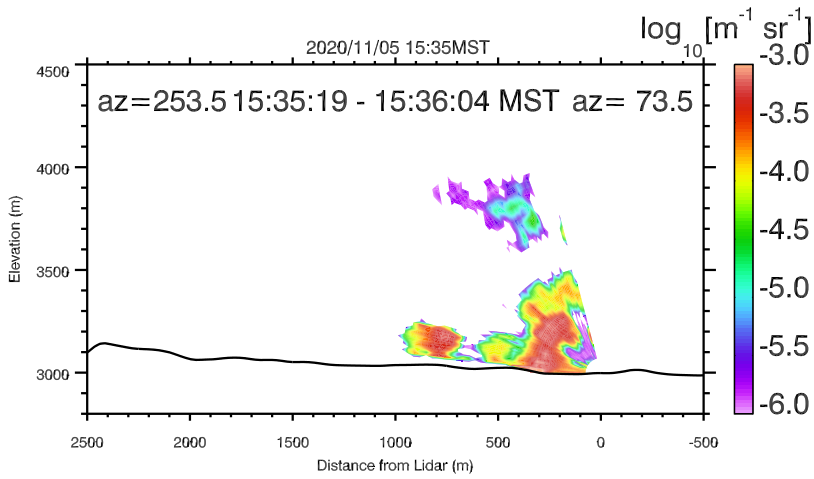
UNR LIDAR - FASMEE/ANNABELLA [Sebastian Hoch]
 Elev. angle rage: -0.-75. Azimuth rage: 254.-254.
 Gate Len [m]: 30.



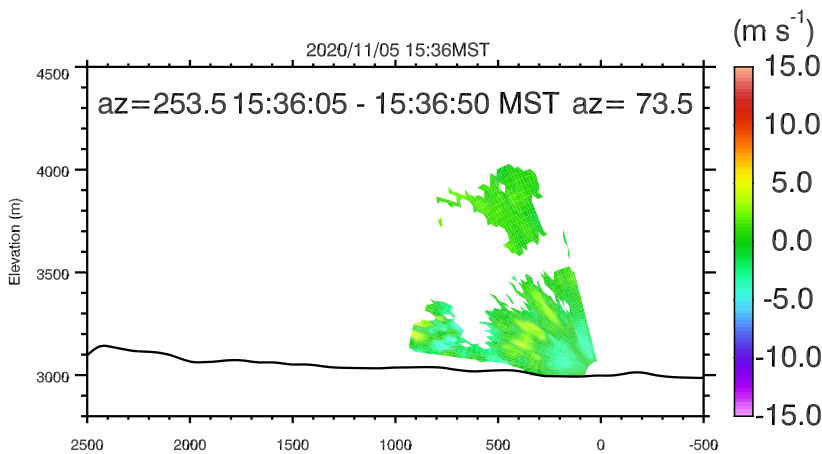
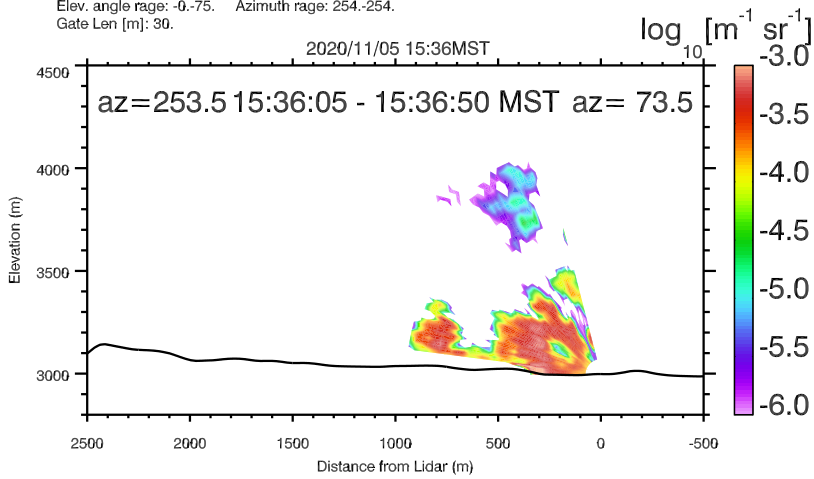
UNR LIDAR - FASMEE/ANNABELLA [Sebastian Hoch]
 Elev. angle rage: -0.-75. Azimuth rage: 254.-254.
 Gate Len [m]: 30.



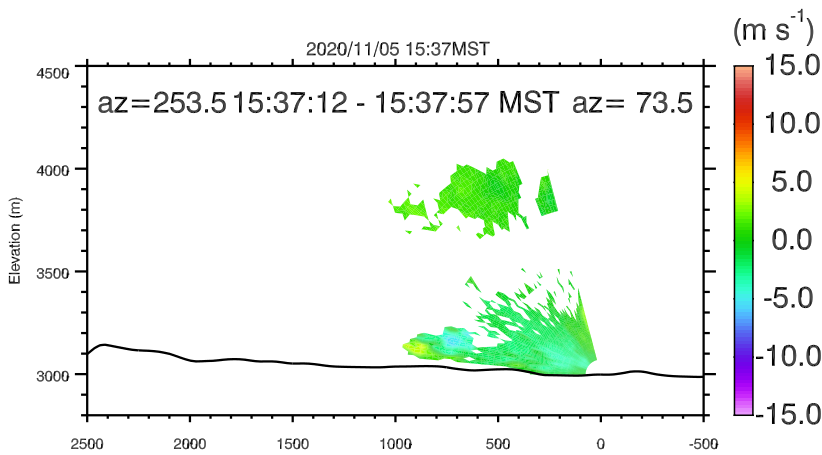
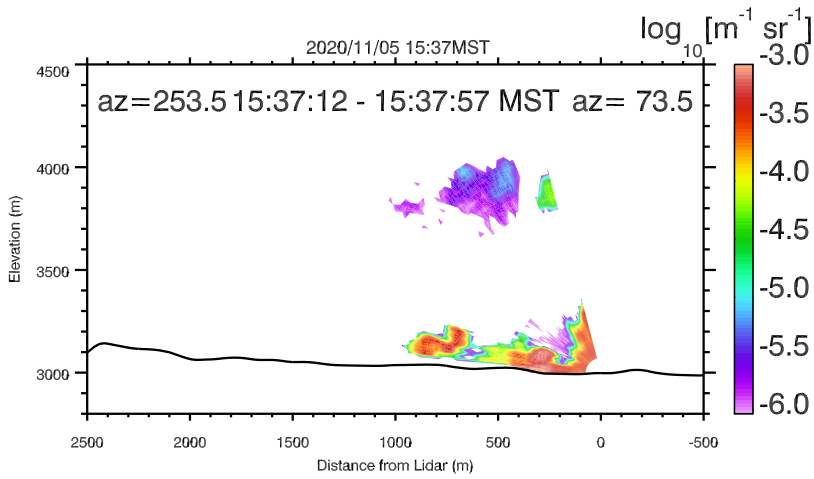
UNR LIDAR - FASMEE/ANNABELLA [Sebastian Hoch]
 Elev. angle rage: -0.-75. Azimuth rage: 254.-254.
 Gate Len [m]: 30.



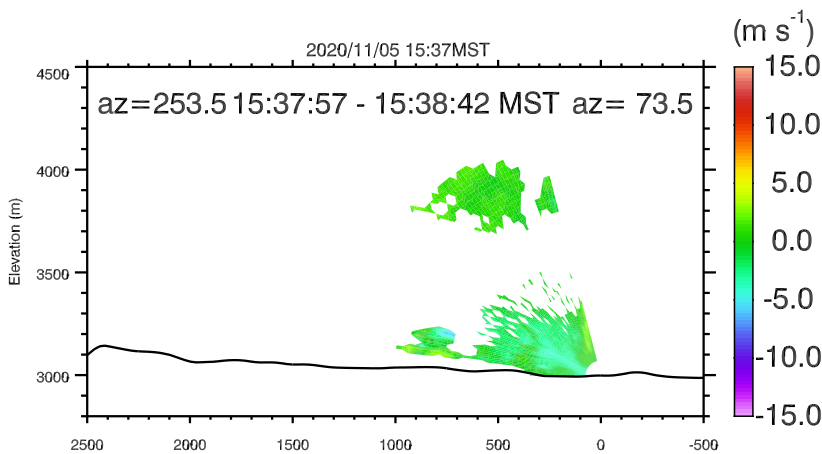
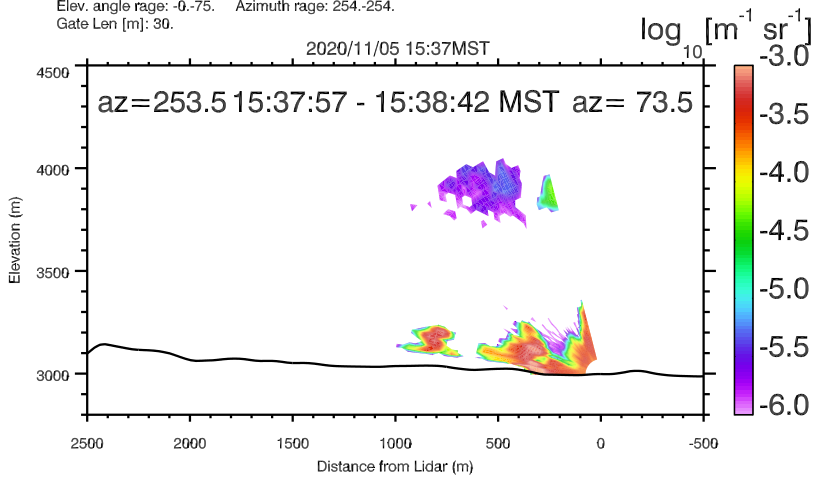
UNR LIDAR - FASMEE/ANNABELLA [Sebastian Hoch]
 Elev. angle rage: -0.-75. Azimuth rage: 254.-254.
 Gate Len [m]: 30.



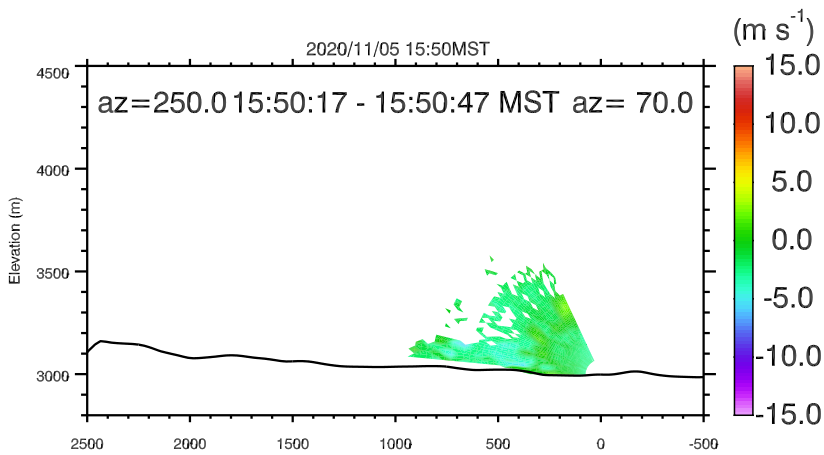
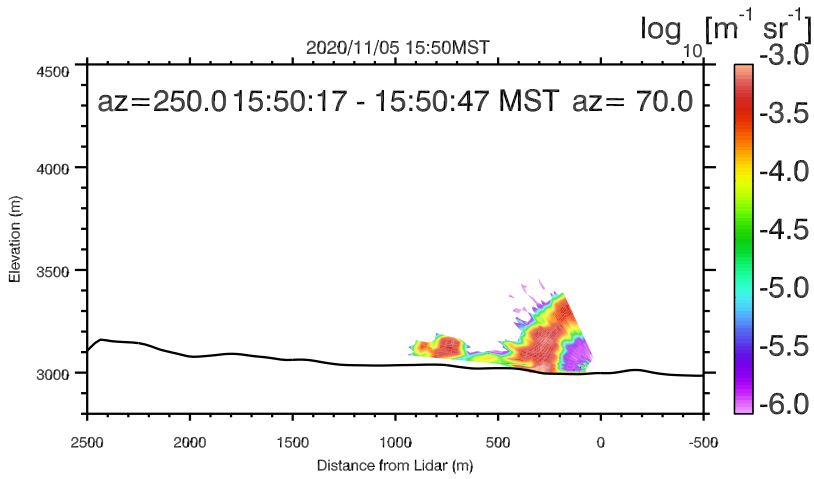
UNR LIDAR - FASMEE/ANNABELLA [Sebastian Hoch]
 Elev. angle rage: -0.-75. Azimuth rage: 254.-254.
 Gate Len [m]: 30.



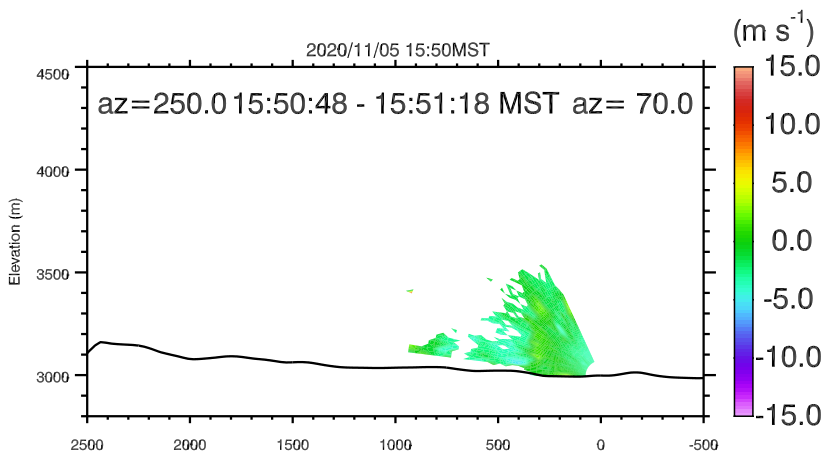
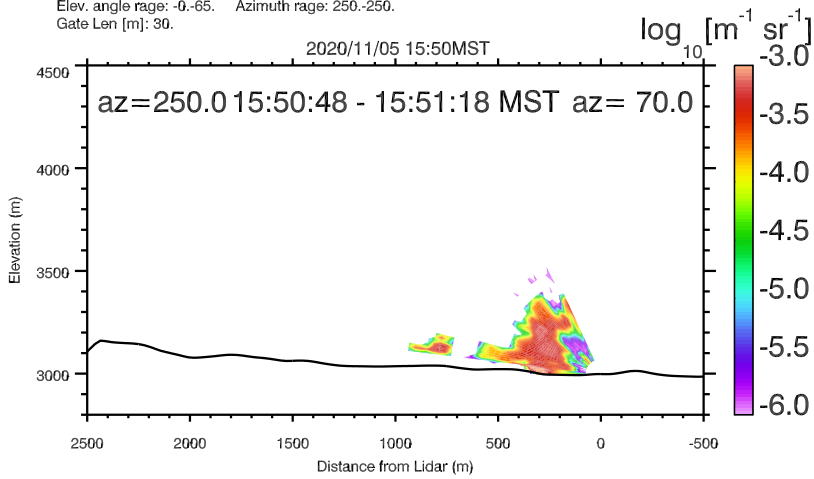
UNR LIDAR - FASMEE/ANNABELLA [Sebastian Hoch]
 Elev. angle rage: -0.-75. Azimuth rage: 254.-254.
 Gate Len [m]: 30.



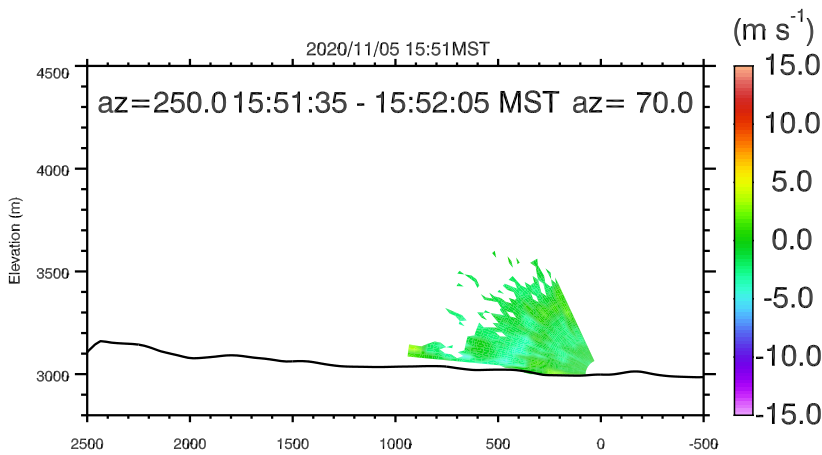
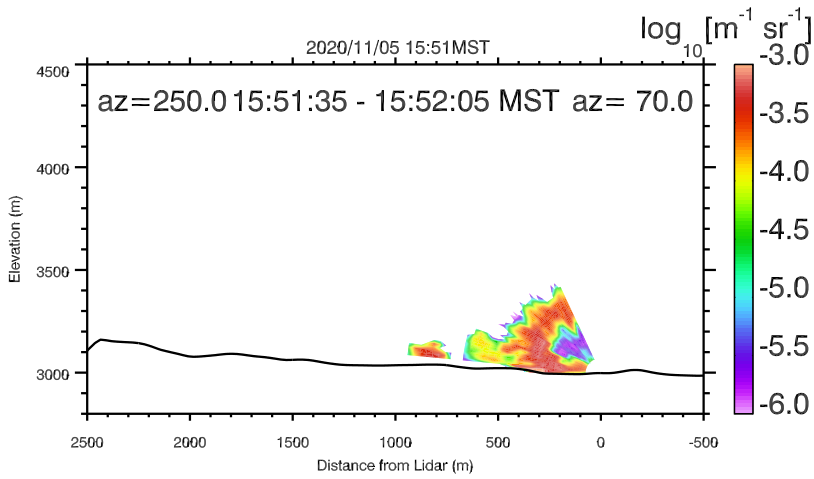
UNR LIDAR - FASMEE/ANNABELLA [Sebastian Hoch]
 Elev. angle rage: -0.-75. Azimuth rage: 254.-254.
 Gate Len [m]: 30.



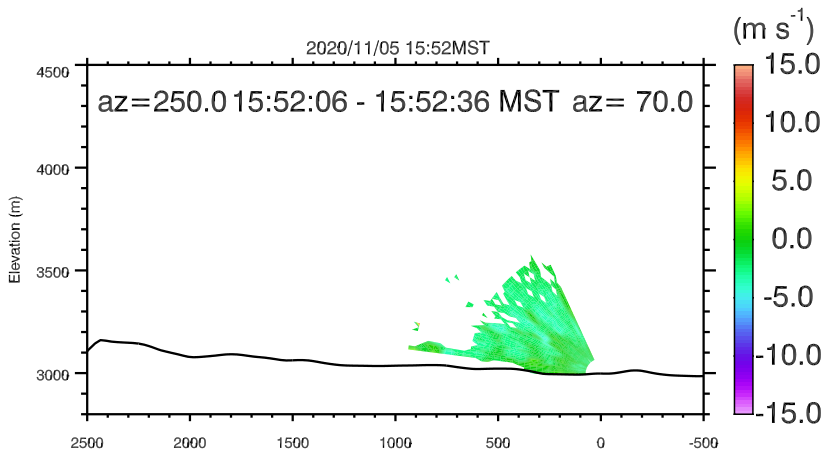
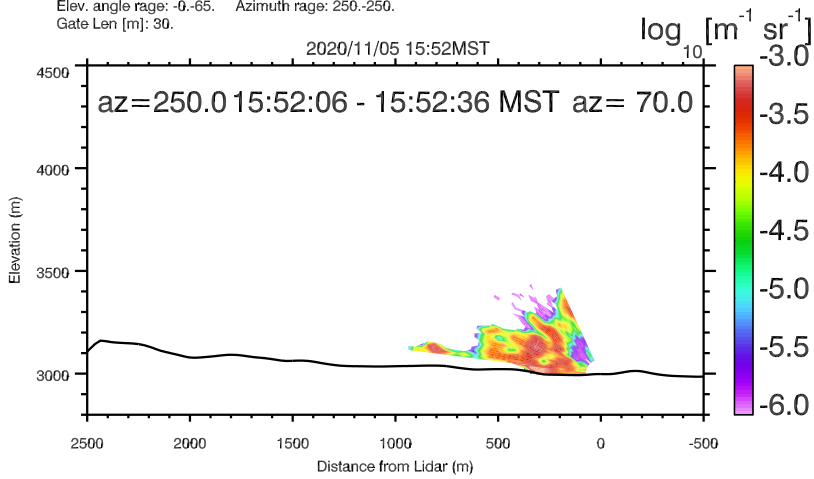
UNR LIDAR - FASMEE/ANNABELLA [Sebastian Hoch]
 Elev. angle range: -0.-65. Azimuth range: 250.-250.
 Gate Len [m]: 30.



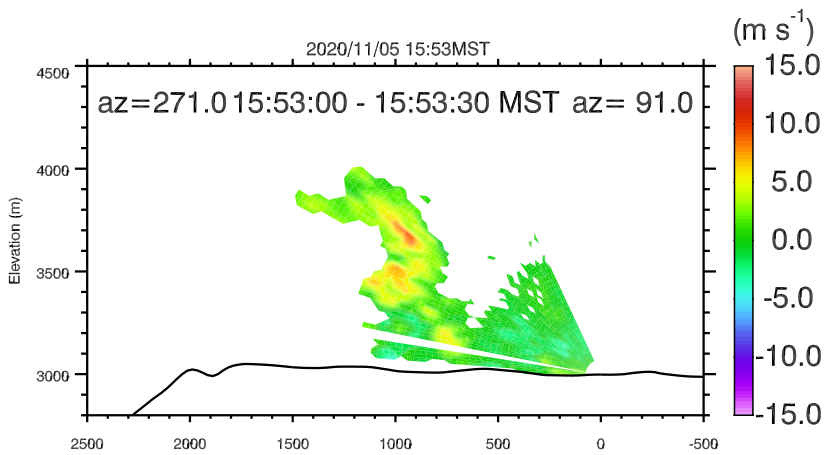
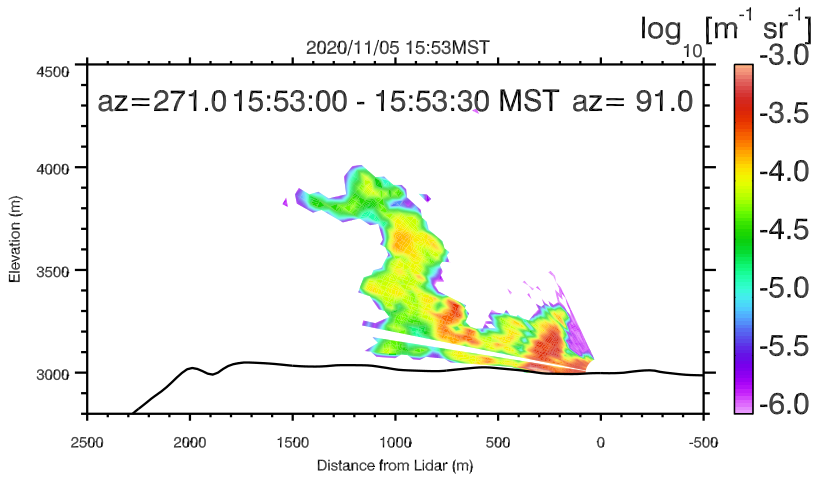
UNR LIDAR - FASMEE/ANNABELLA [Sebastian Hoch]
 Elev. angle range: -0.-65. Azimuth range: 250.-250.
 Gate Len [m]: 30.



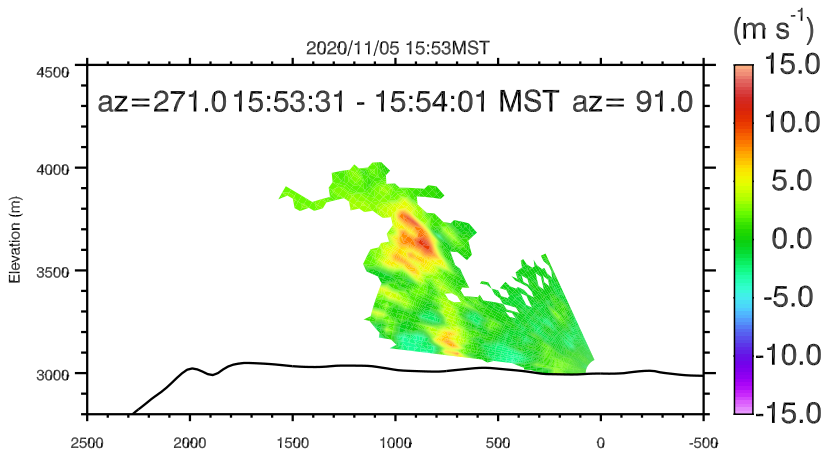
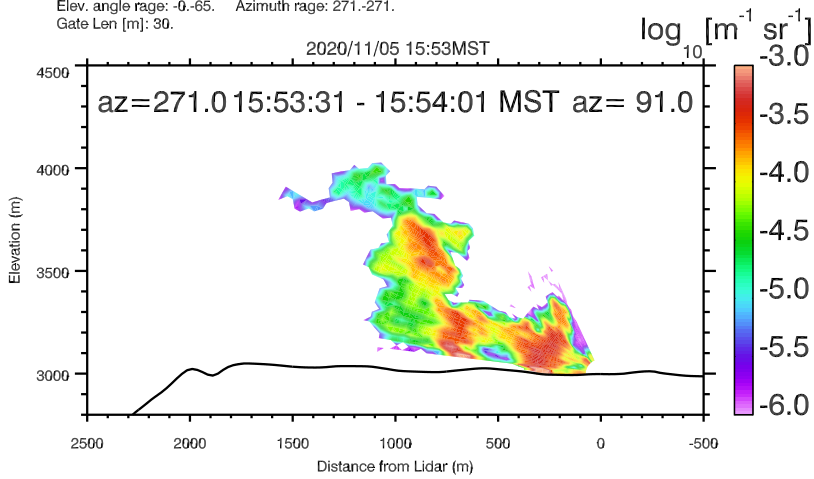
UNR LIDAR - FASMEE/ANNABELLA [Sebastian Hoch]
 Elev. angle range: -0.-65. Azimuth range: 250.-250.
 Gate Len [m]: 30.



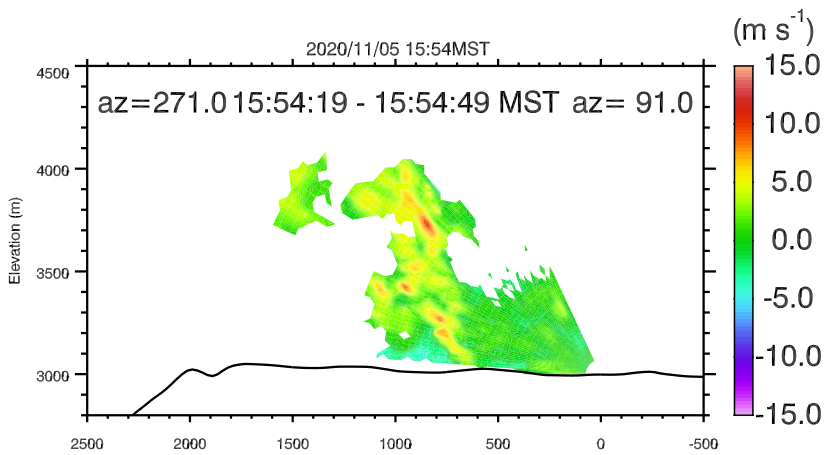
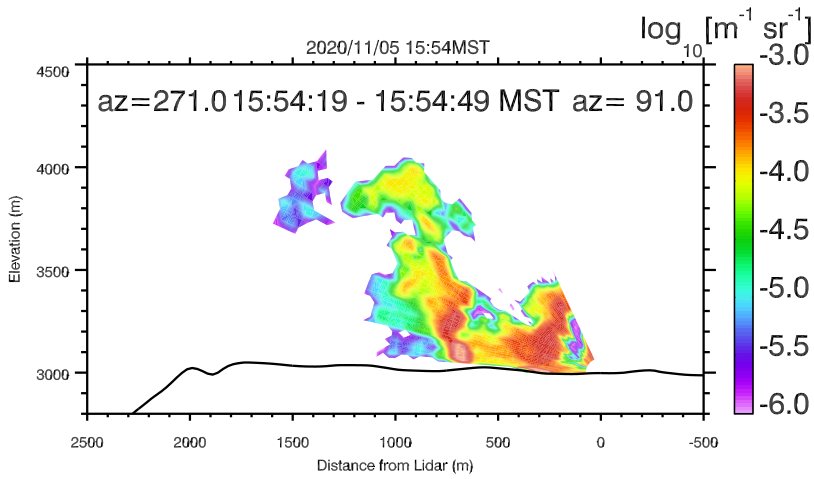
UNR LIDAR - FASMEE/ANNABELLA [Sebastian Hoch]
 Elev. angle range: -0.-65. Azimuth range: 250.-250.
 Gate Len [m]: 30.



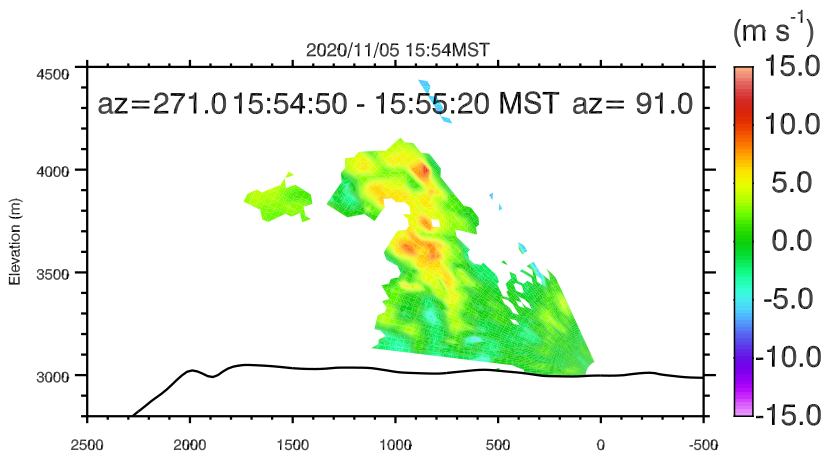
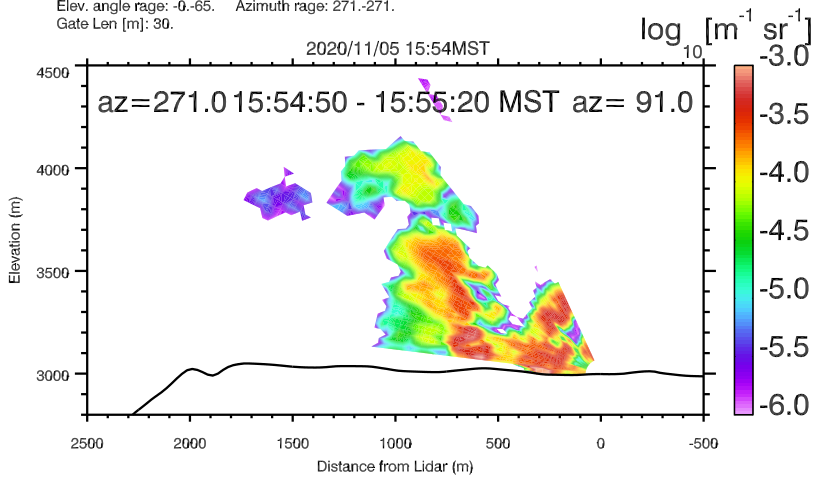
UNR LIDAR - FASMEE/ANNABELLA [Sebastian Hoch]
 Elev. angle rage: -0.-65. Azimuth rage: 271.-271.
 Gate Len [m]: 30.



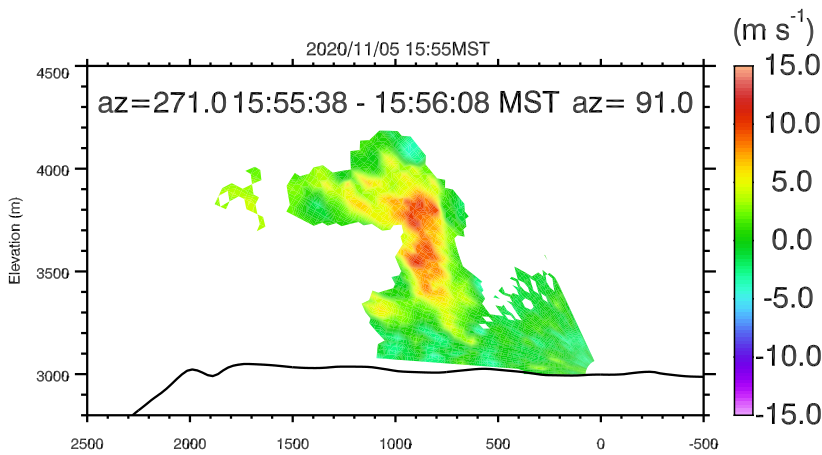
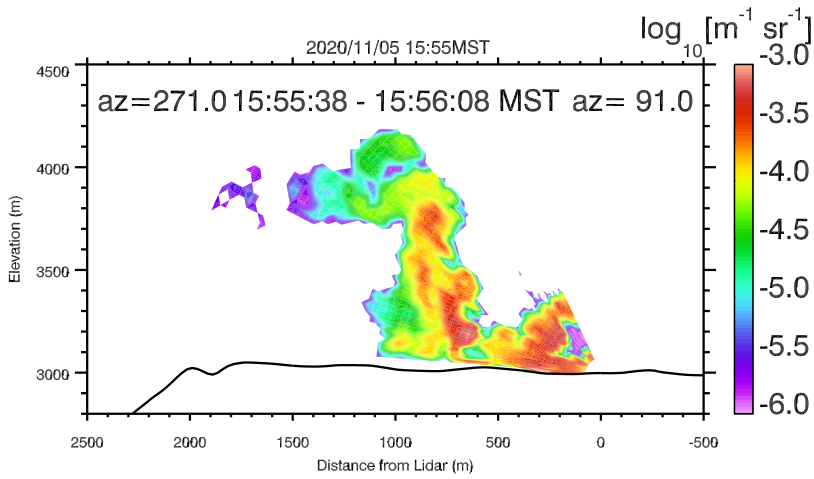
UNR LIDAR - FASMEE/ANNABELLA [Sebastian Hoch]
 Elev. angle rage: -0.-65. Azimuth rage: 271.-271.
 Gate Len [m]: 30.



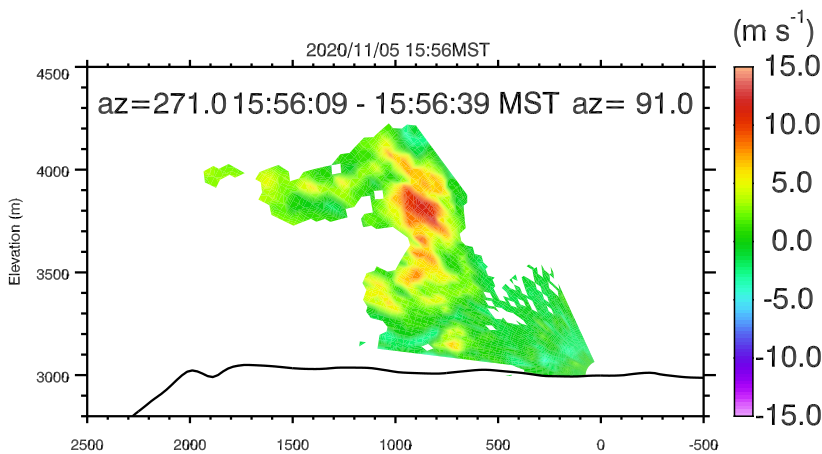
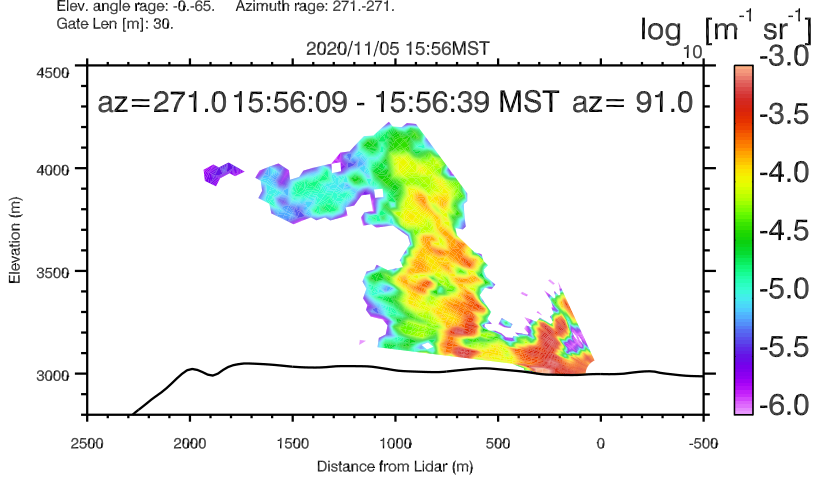
UNR LIDAR - FASMEE/ANNABELLA [Sebastian Hoch]
 Elev. angle range: -0.-65. Azimuth range: 271.-271.
 Gate Len [m]: 30.



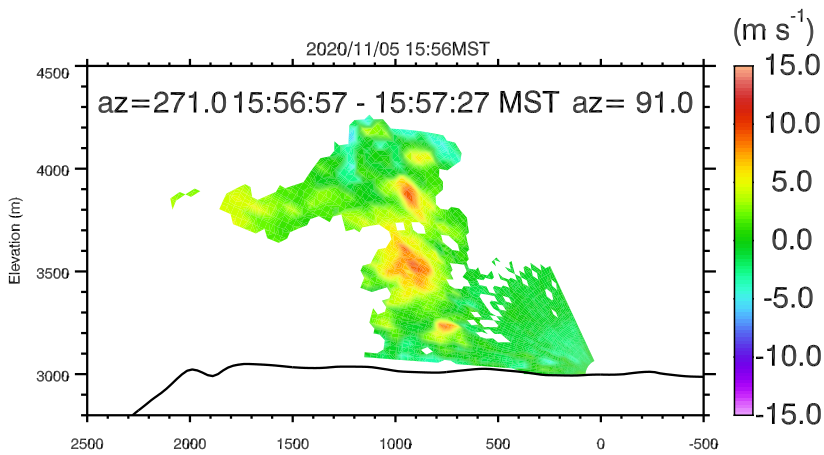
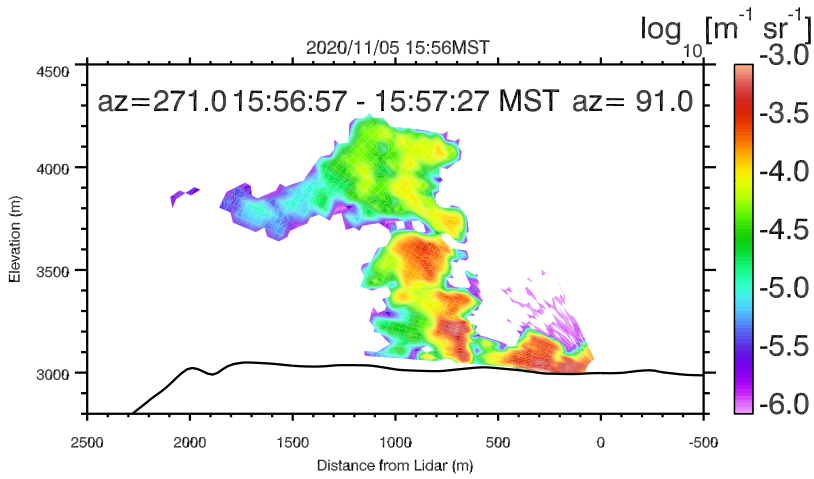
UNR LIDAR - FASMEE/ANNABELLA [Sebastian Hoch]
 Elev. angle range: -0.-65. Azimuth range: 271.-271.
 Gate Len [m]: 30.



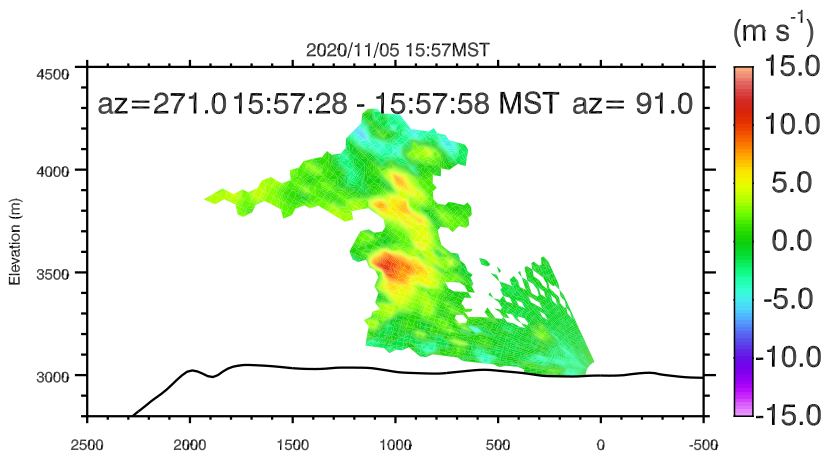
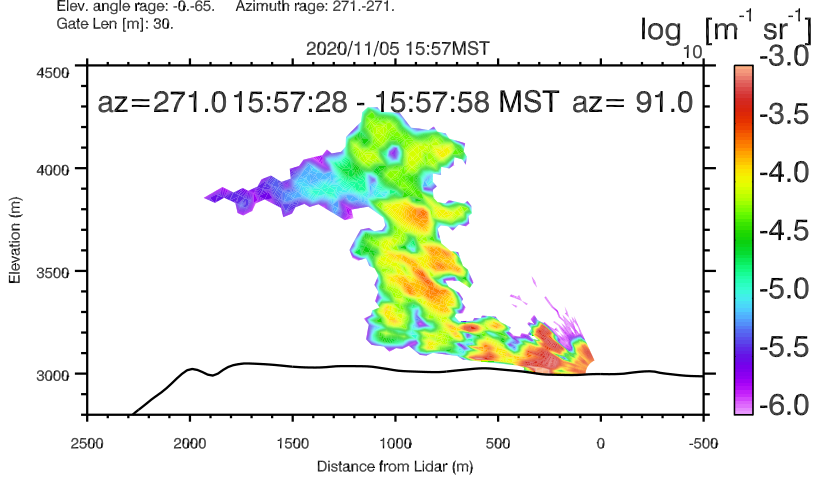
UNR LIDAR - FASMEE/ANNABELLA [Sebastian Hoch]
 Elev. angle rage: -0.-65. Azimuth rage: 271.-271.
 Gate Len [m]: 30.



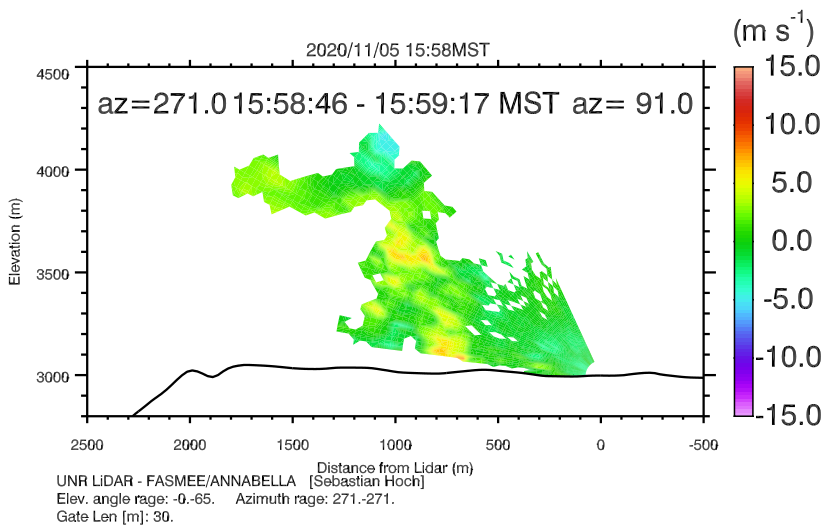
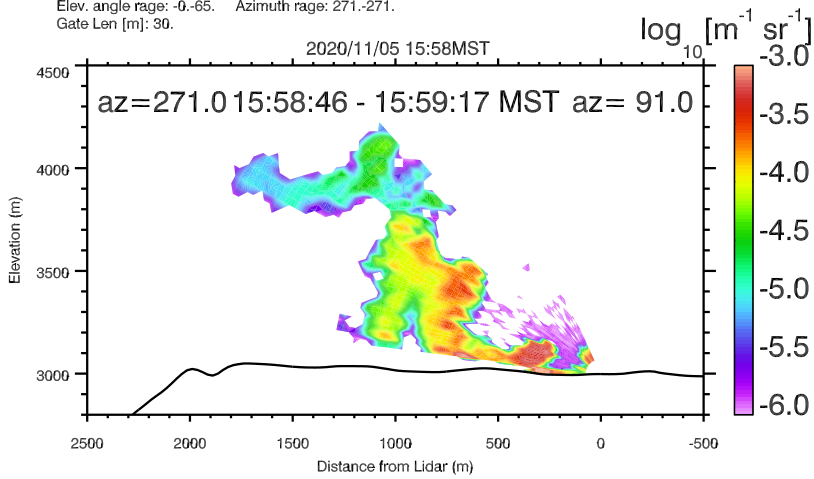
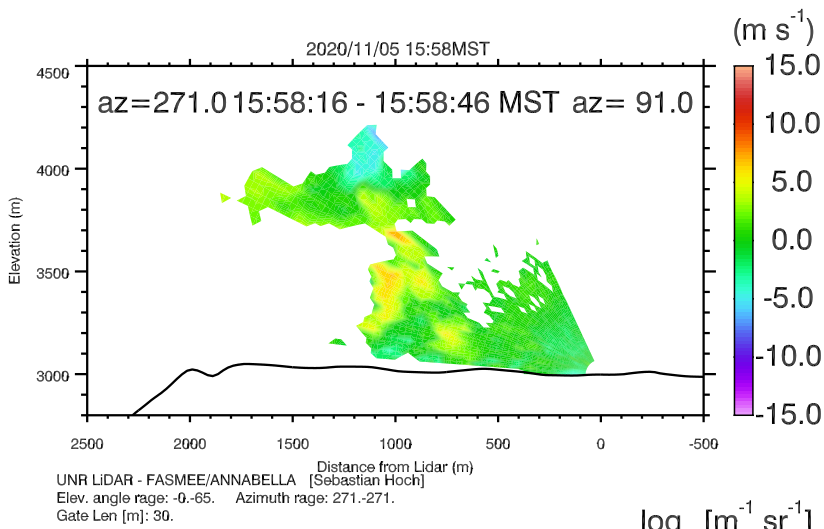
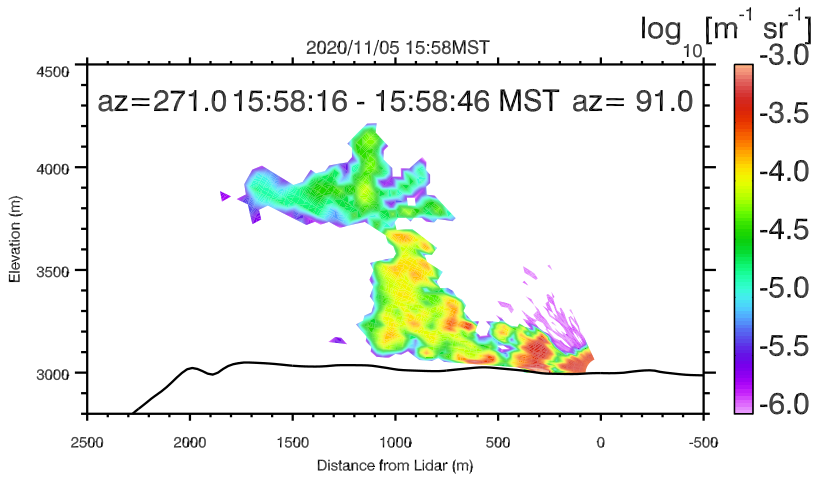
UNR LIDAR - FASMEE/ANNABELLA [Sebastian Hoch]
 Elev. angle rage: -0.-65. Azimuth rage: 271.-271.
 Gate Len [m]: 30.

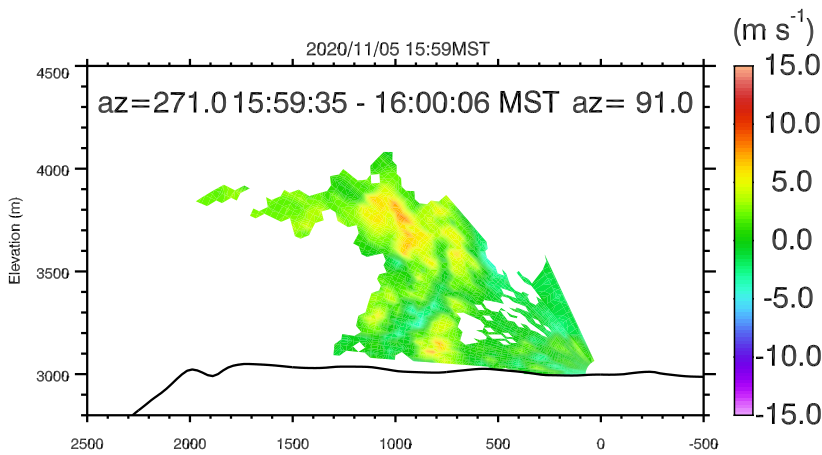
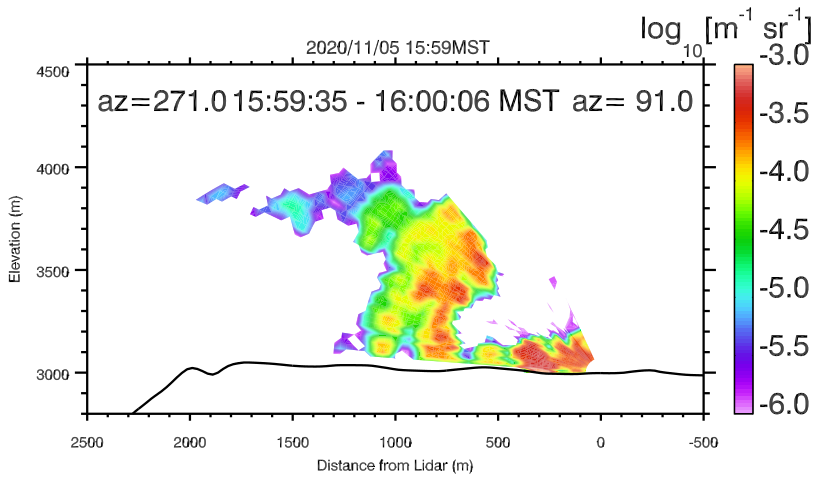


UNR LIDAR - FASMEE/ANNABELLA [Sebastian Hoch]
 Elev. angle rage: -0.-65. Azimuth rage: 271.-271.
 Gate Len [m]: 30.

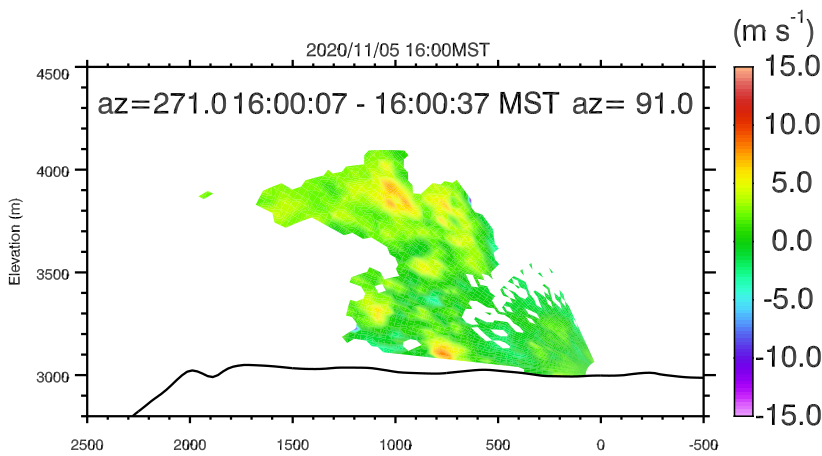
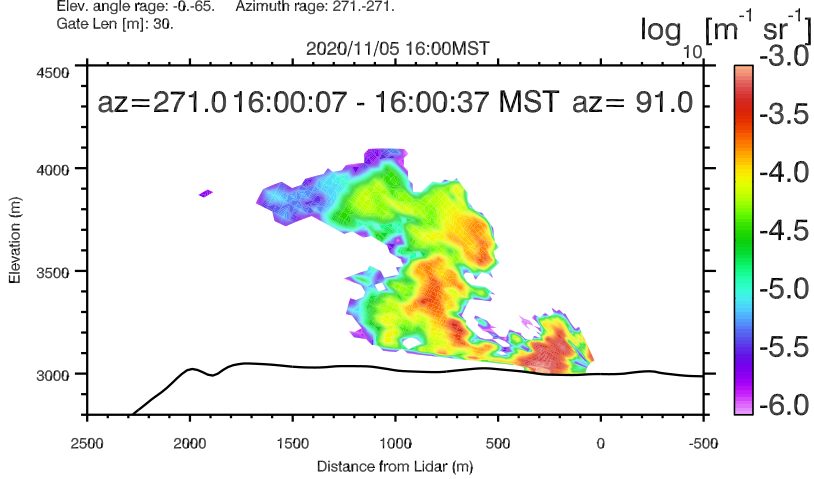


UNR LIDAR - FASMEE/ANNABELLA [Sebastian Hoch]
 Elev. angle rage: -0.-65. Azimuth rage: 271.-271.
 Gate Len [m]: 30.





UNR LIDAR - FASMEE/ANNABELLA [Sebastian Hoch]
 Elev. angle rage: -0.-65. Azimuth rage: 271.-271.
 Gate Len [m]: 30.



UNR LIDAR - FASMEE/ANNABELLA [Sebastian Hoch]
 Elev. angle rage: -0.-65. Azimuth rage: 271.-271.
 Gate Len [m]: 30.